

Supporting Information

**Butyl lithium assisted direct grafting of polyoligomeric
silsesquioxane onto graphene**

*Titash Mondal,^a Anil K Bhowmick^a * and Ramanan Krishnamoorti^b**

^a Department of Chemistry, Indian Institute of Technology Patna, India-800013

^b Department of Chemical and Biomolecular Engineering, University of Houston,
Houston, Texas, 77204 USA

Corresponding Author: Anil K. Bhowmick and Ramanan Krishnamoorti

Email: anilkb@rtc.iitkgp.ernet.in; ramanan@uh.edu

Better resolution XRD of GP

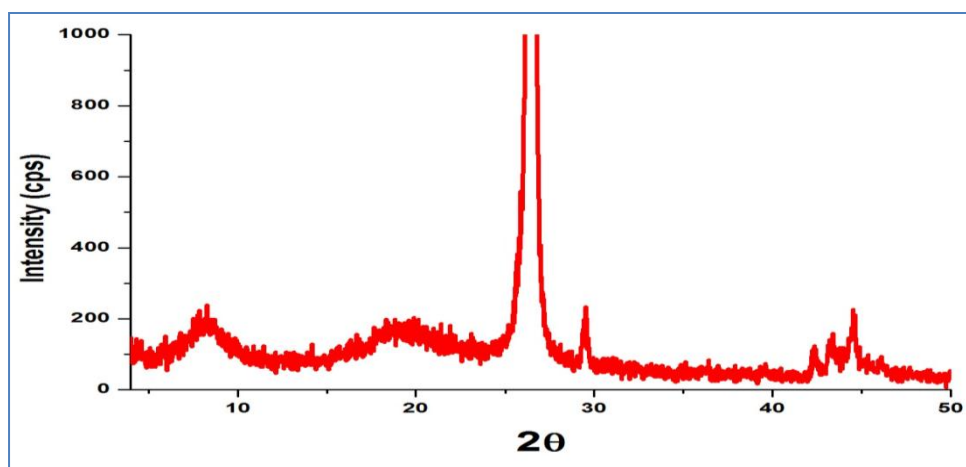


Figure S1: Better resolution XRD of GP

Thermogravimetric analysis

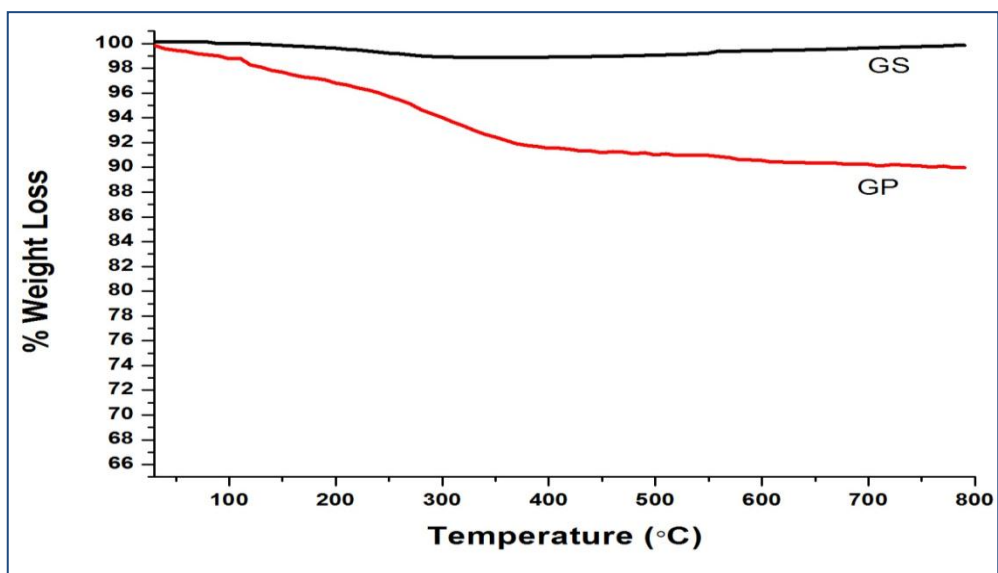


Figure S2: TGA of GP and GS respectively

SEM and TEM image of the edge of graphene sheet

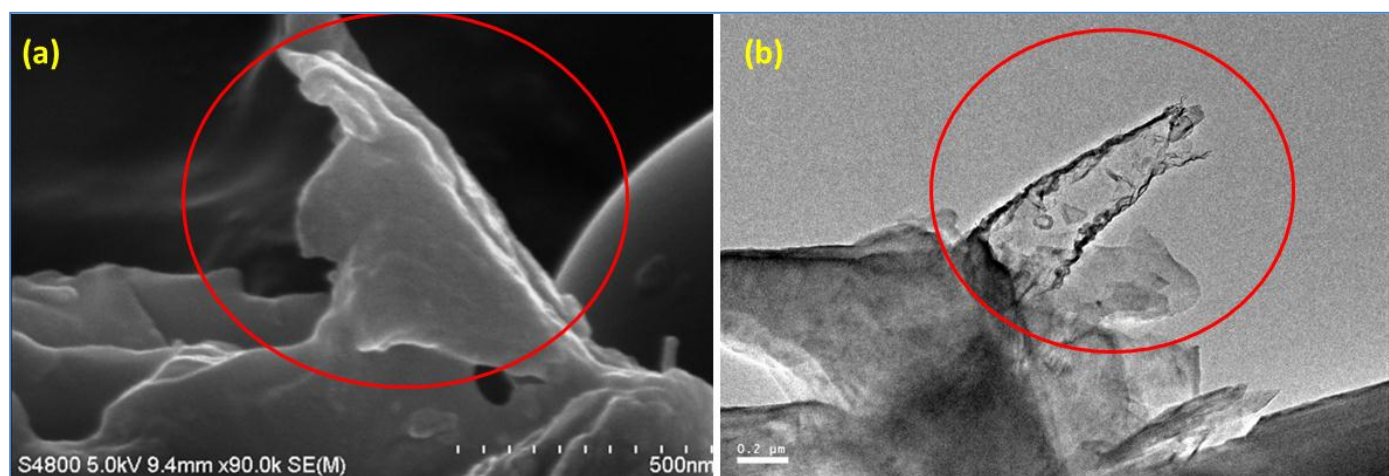


Figure S3: Edge of graphene sheet as observed with (a)SEM and (b)TEM