

Electronic Supplementary Information

Controlling doping level of double-walled carbon nanotubes by using aromatic hydrocarbon complexes

Kyoung-Yong Chun^{*a}

^a Center for Bio-Artificial Muscle and Department of Biomedical Engineering, Hanyang University, Seoul, 133-791, South Korea. Fax: 82 2 2291 2320; Tel: 82 2 22204540; E-mail: kychun@gmail.com

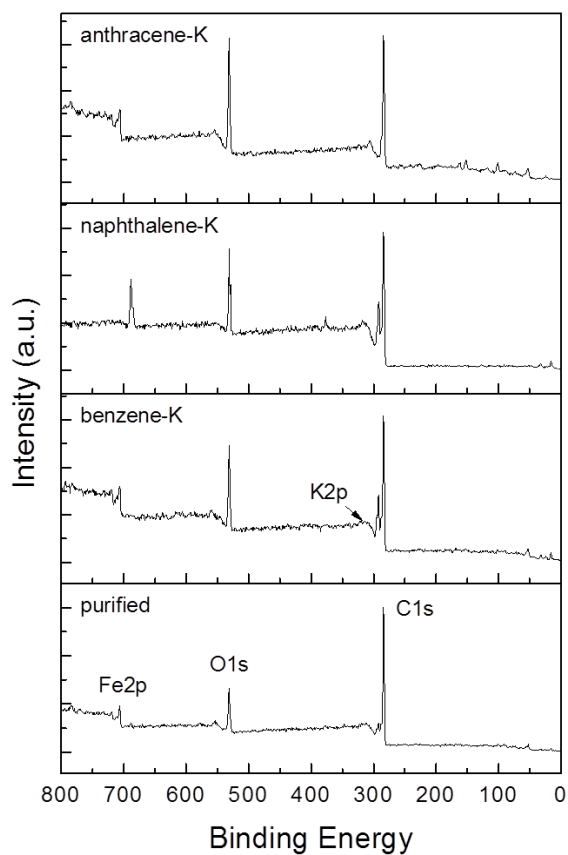


Fig. S1. XPS full spectra scan using 1486.6 eV.

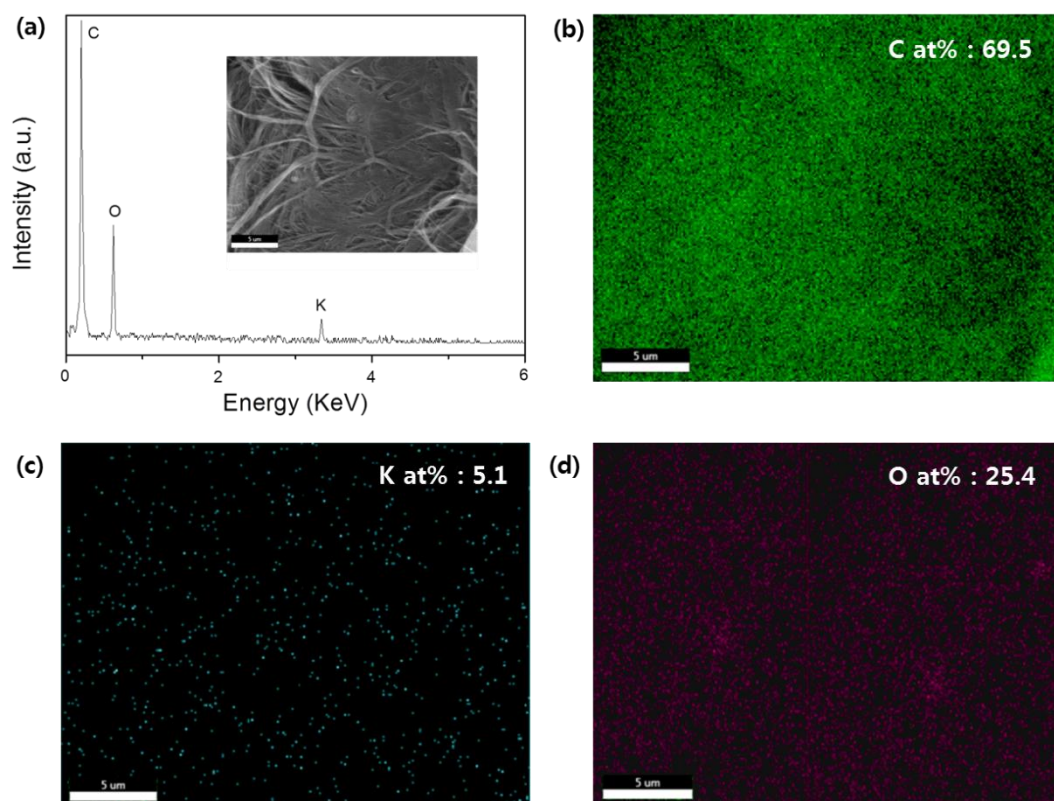


Fig. S2. EDS analysis of benzene-K-complexes. (a) characteristic C, N, O peaks in the area of SEM (inset) observation. (b) C mapping (69.5 at%), (c) K mapping (5.1 at%), (d) O mapping (25.4 at%) in the same area of (a).

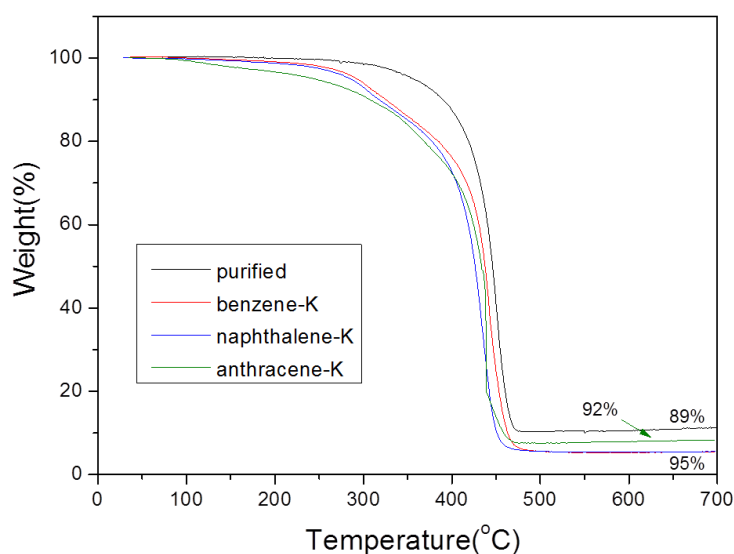


Fig. S3. TGA curves of the purified DWNTs under an air atmosphere at a heating rate of 5 °C/min and of each K-doped DWNTs.