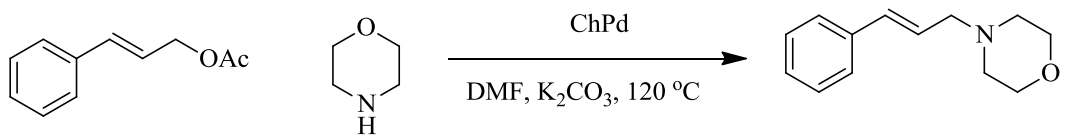


***N*-Allylation of amines with allyl acetates using chitosan-immobilized palladium**

Nasir Baig R B, Buchi Reddy Vaddula, Michael A. Gonzalez, Rajender S. Varma*

Table 1 Recycling of the catalyst



Reaction scheme: Allyl acetate + Morpholine $\xrightarrow[\text{DMF, K}_2\text{CO}_3, 120\text{ }^\circ\text{C}]{\text{ChPd}}$ N-allylmorpholine

| Entry | Catalyst | Time | Temp | Yield |
|---------|----------|------|------|-------|
| Cycle 1 | ChPd | 12h | 120 | 88% |
| Cycle 2 | ChPd | 12h | 120 | 88% |
| Cycle 3 | ChPd | 12h | 120 | 86% |
| Cycle 4 | ChPd | 12h | 120 | 86% |
| Cycle 5 | ChPd | 12h | 120 | 87% |

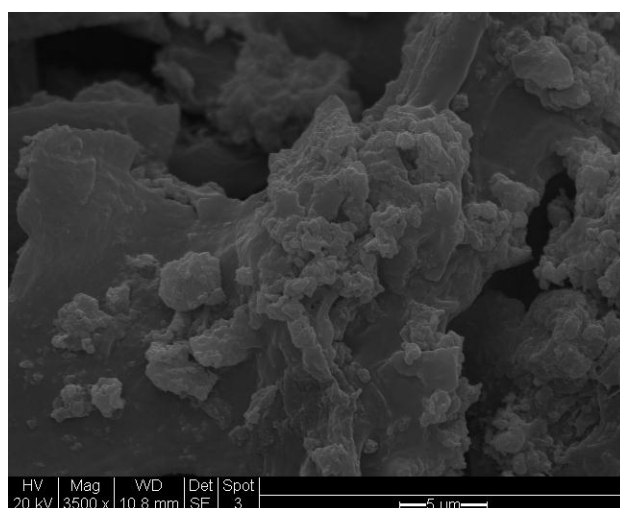


Figure 1

