

Supplementary Information

A Se/C composite as cathode material for rechargeable lithium batteries with good rate performance

Lili Liu^a, Yuyang Hou^a, Yaqiong Yang^a, Minxia Li^a, Xiaowei Wang^a and Yuping Wu^{a*}

New Energy and Materials Laboratory (NEML), Department of Chemistry & Shanghai Key

Laboratory of Molecular Catalysis and Innovative Materials, Fudan University, Shanghai 200433,

China

Email: wuyp@fudan.edu.cn

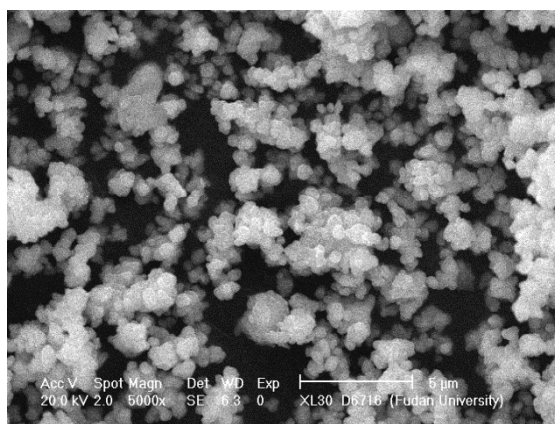


Figure S1. SEM micrograph of the commercial Se particles.

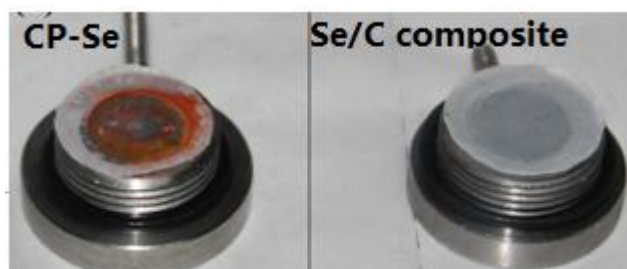


Figure S2. Photos of the membranes after the 5th discharge to 0.8 V from the Se/C composite(left) and the CP-Se(right).