

Supporting Information

Thermally conductive and electrically insulating epoxy nanocomposites with silica-coated graphene

Xue Pu,^a Hao-Bin Zhang,^a Xiaofeng Li,^{*a} Chenxi Gui,^a Zhong-Zhen Yu^{*a,b}

^a State Key Laboratory of Organic-Inorganic Composites, Beijing University of Chemical Technology, Beijing 100029, China

^b Beijing Key Laboratory on Preparation and Processing of Novel Polymer Materials, Beijing University of Chemical Technology, Beijing 100029, China

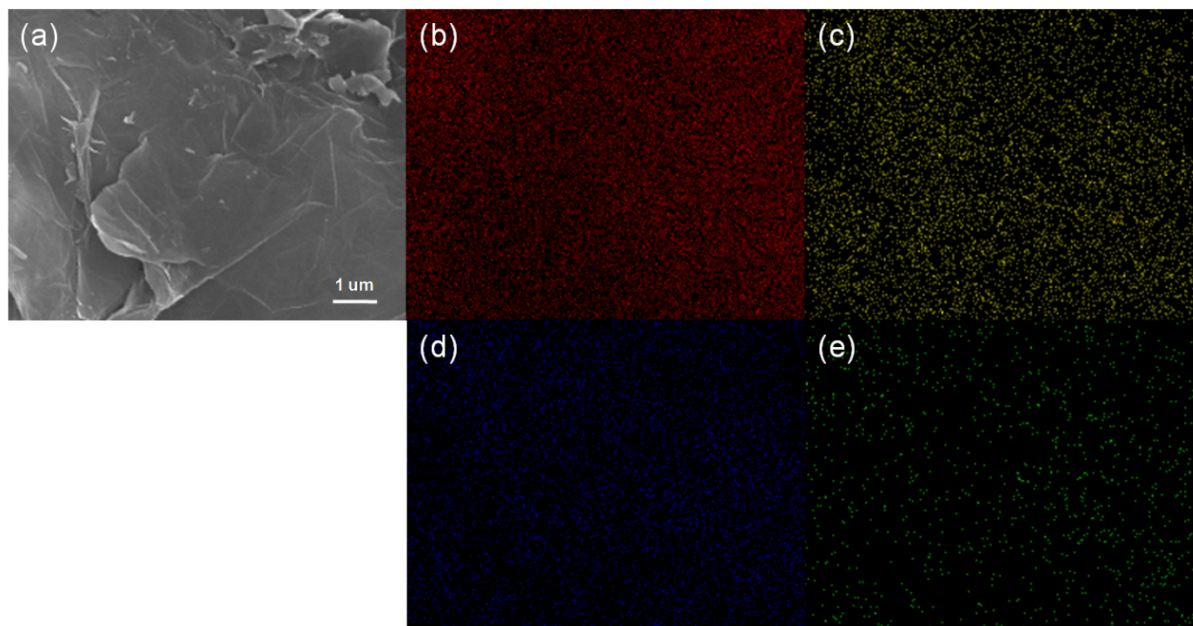


Fig. S1 (a) SEM image of A-graphene and its corresponding elemental mapping images of (b) carbon, (c) silicon, (d) oxygen, and (e) nitrogen.

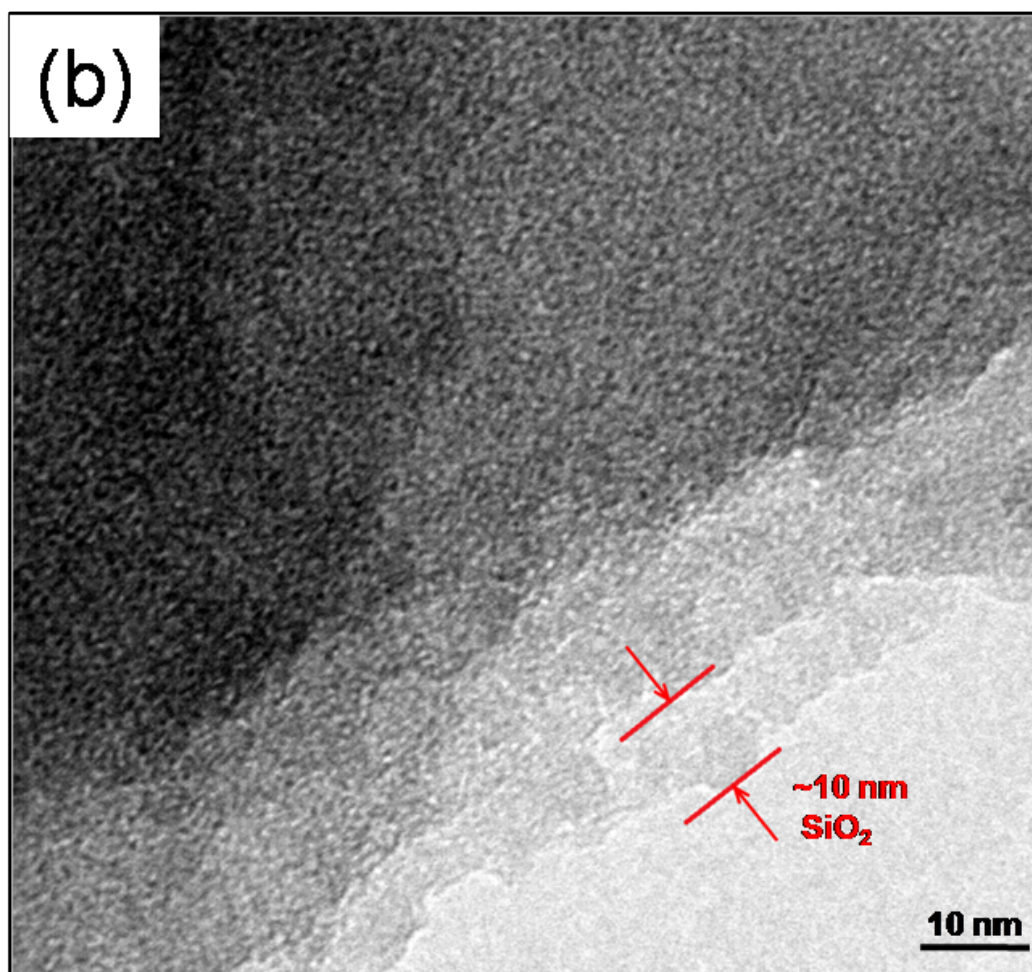
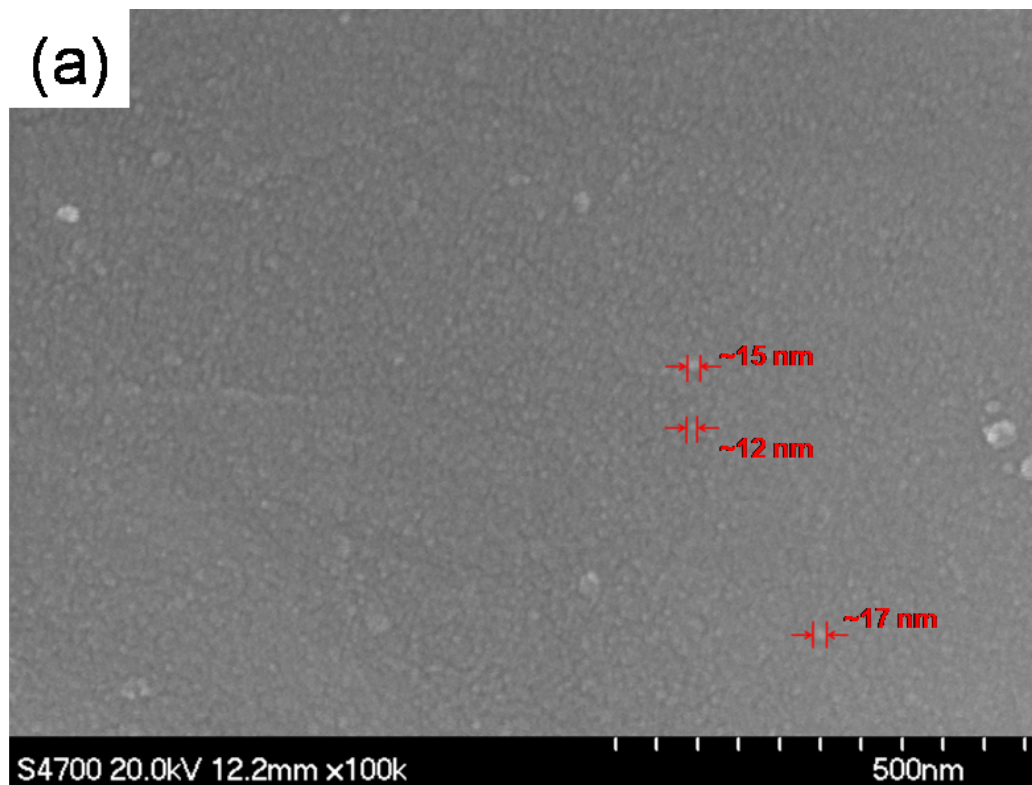


Fig. S2 (a) SEM and (b) TEM images of S-graphene.

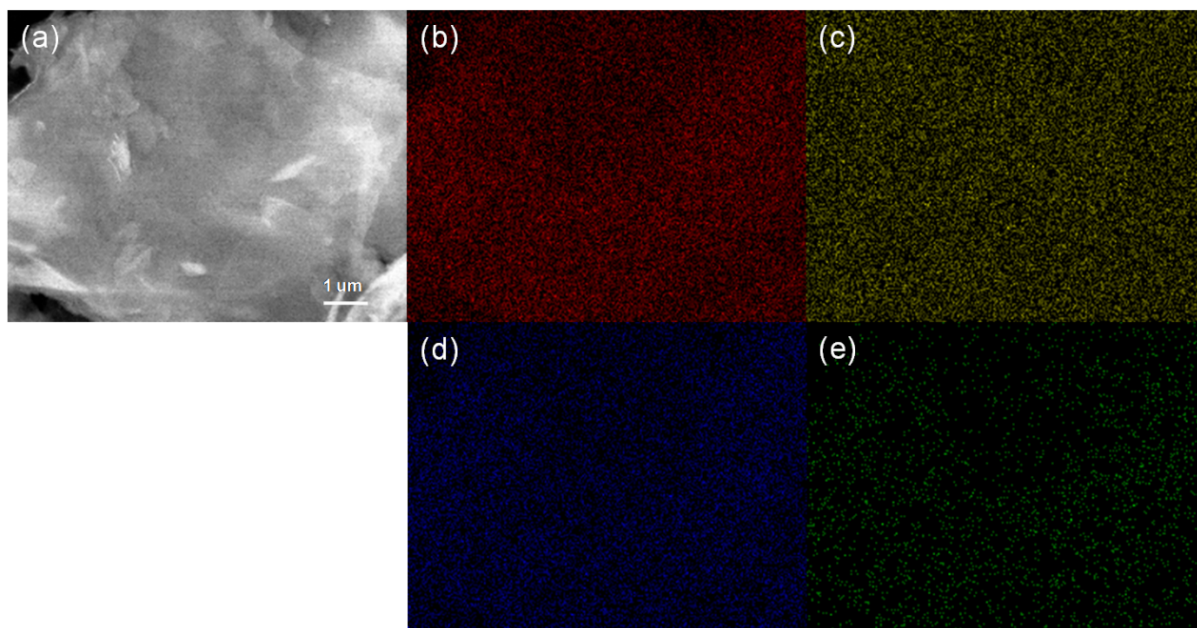


Fig. S3 (a) SEM image of S-graphene and its corresponding elemental mapping images of (b) carbon, (c) silicon, (d) oxygen, and (e) nitrogen.