

Electronic Supplementary Information (ESI)

**High Selectivity Up-converted Fluorescence Turn-on Probe for Zn<sup>2+</sup> Based on PAMAM Hydroxy-Naphthalene Schiff-bases (C=N) Half-organic Quantum Dots**

Yan Ji, Ying Qian\*

School of Chemistry and Chemical Engineering, Southeast University, Nanjing, 211189, China.

E-mail: [yingqian@seu.edu.cn](mailto:yingqian@seu.edu.cn); [jiyan98@163.com](mailto:jiyan98@163.com)

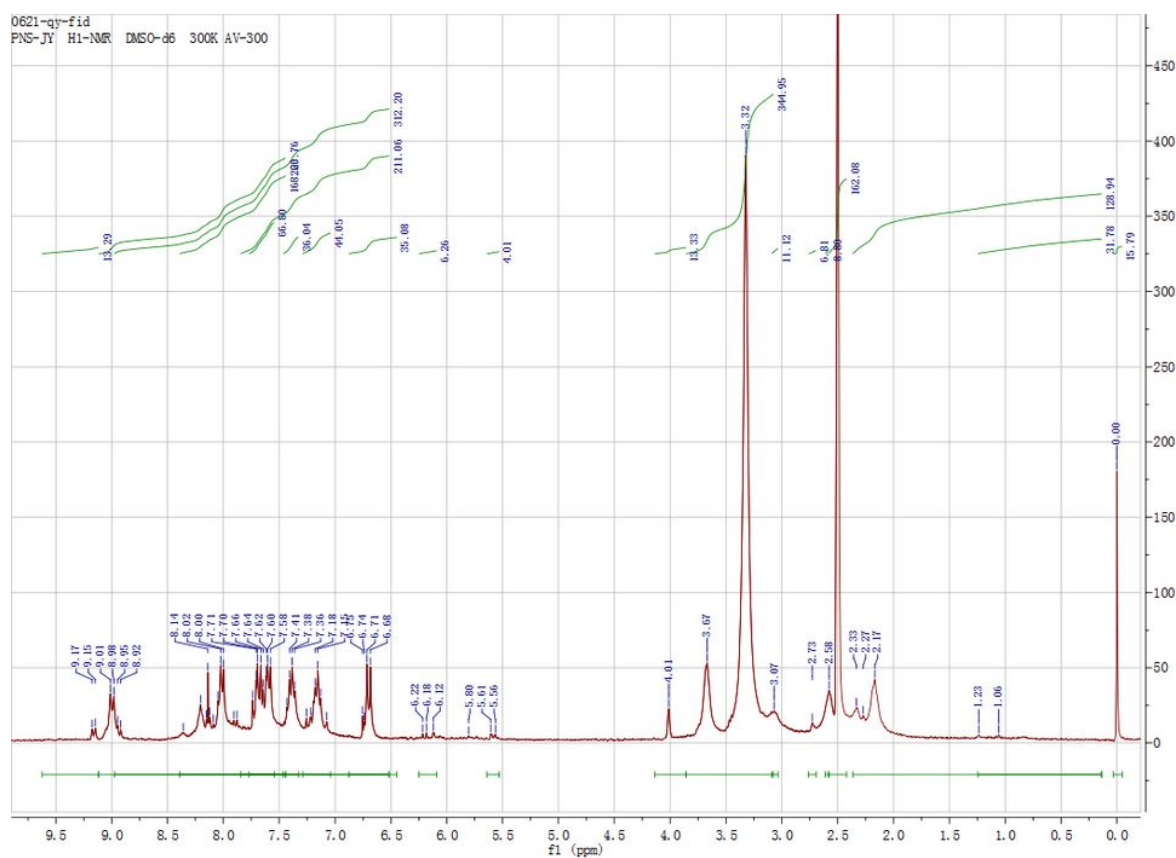
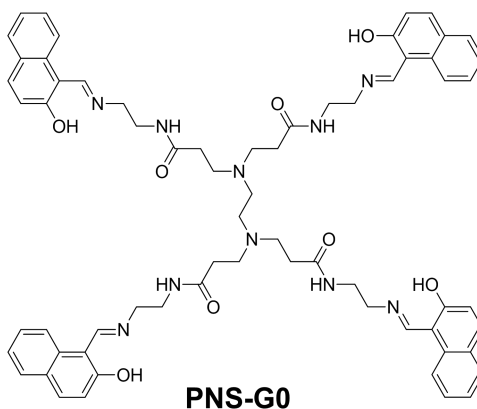
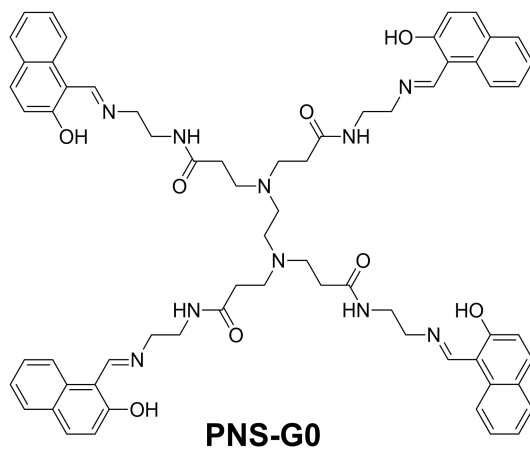


Figure S1 <sup>1</sup>H NMR of PNS-G0



PNS-G0  $^{13}\text{C}$ -NMR DMSO- $d_6$  300K AV-300

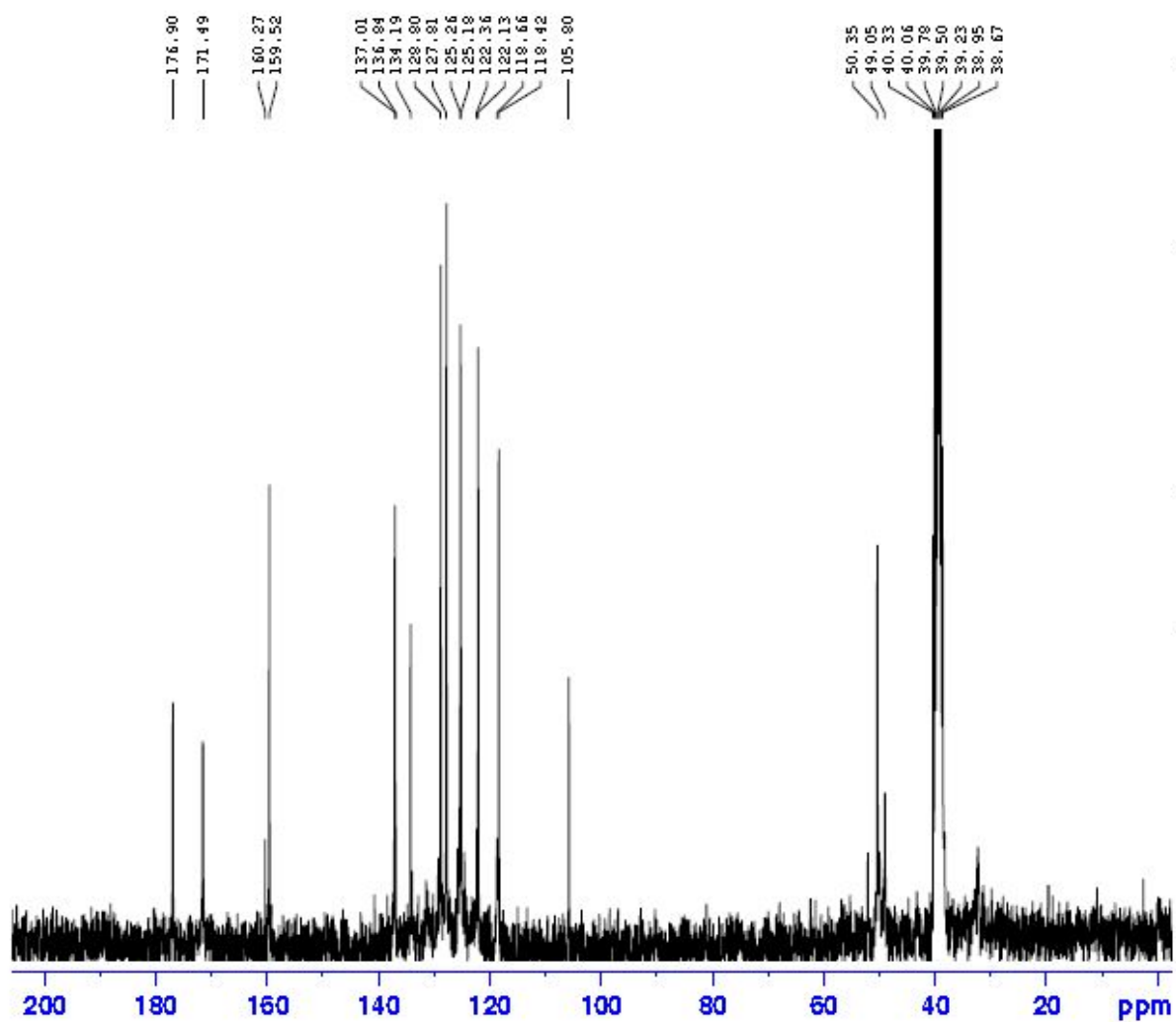
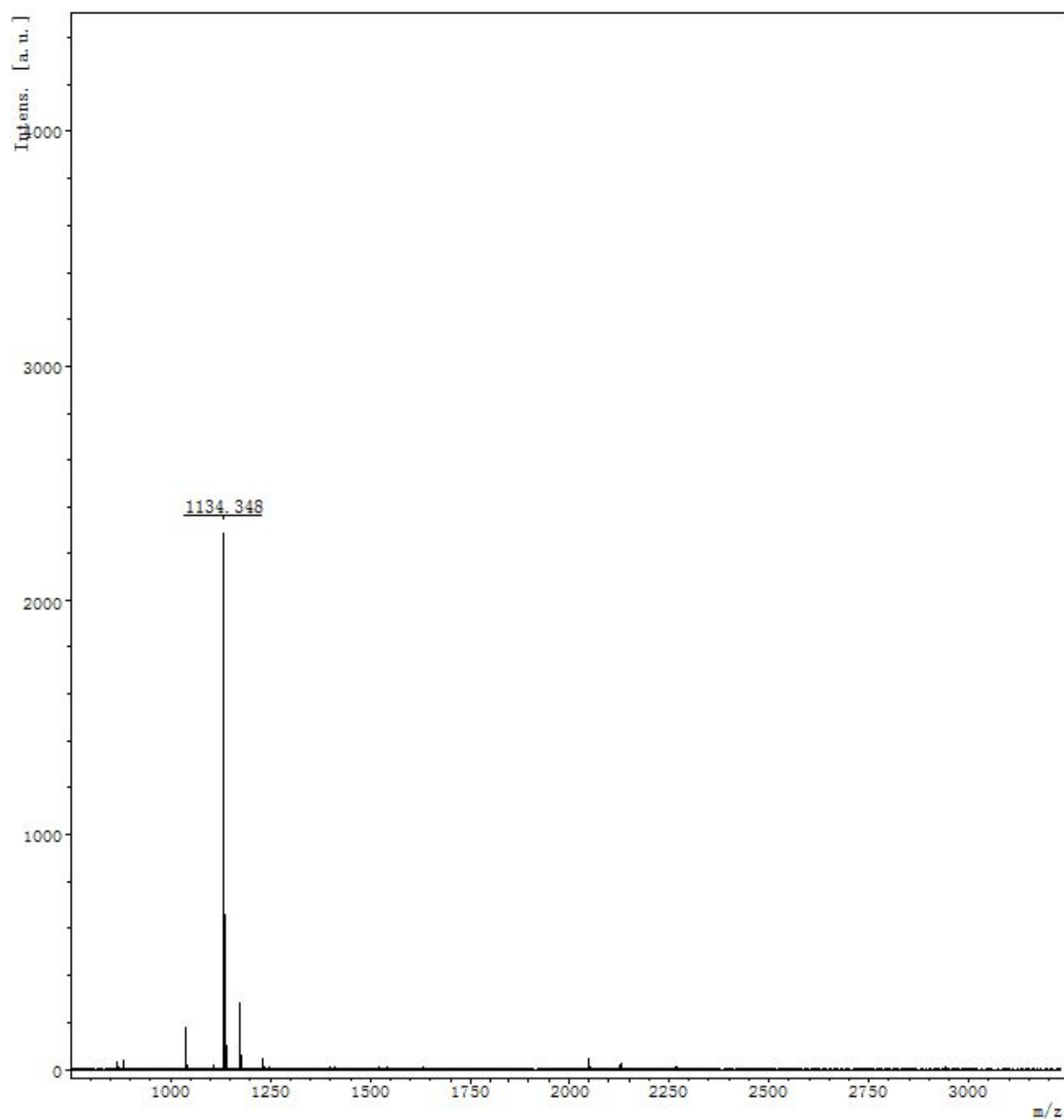
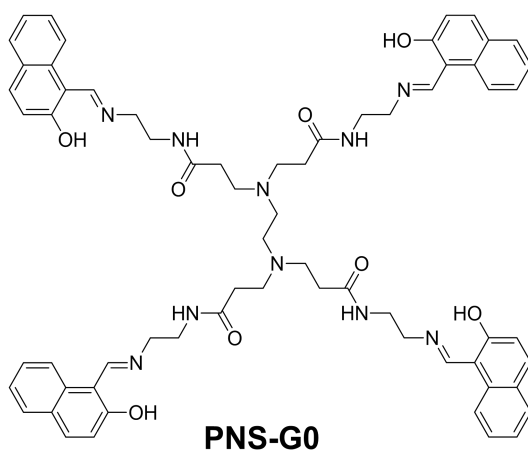
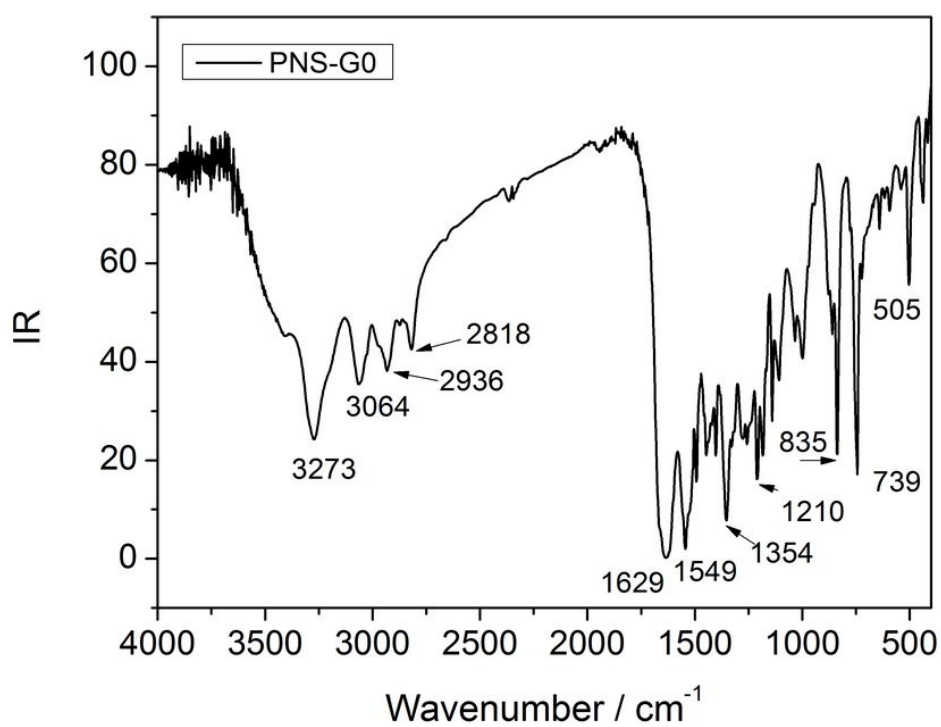
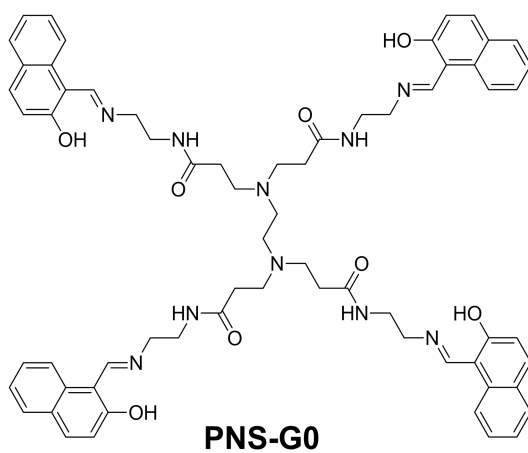


Figure S2  $^{13}\text{C}$  NMR of PNS-G0

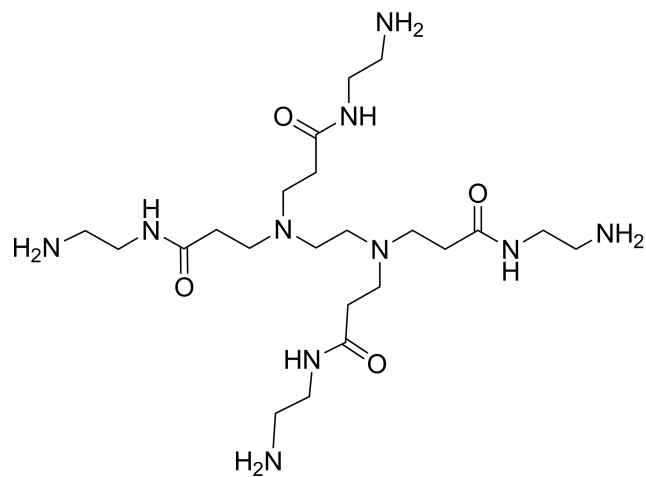


**Figure S3** HRMS of PNS-G0

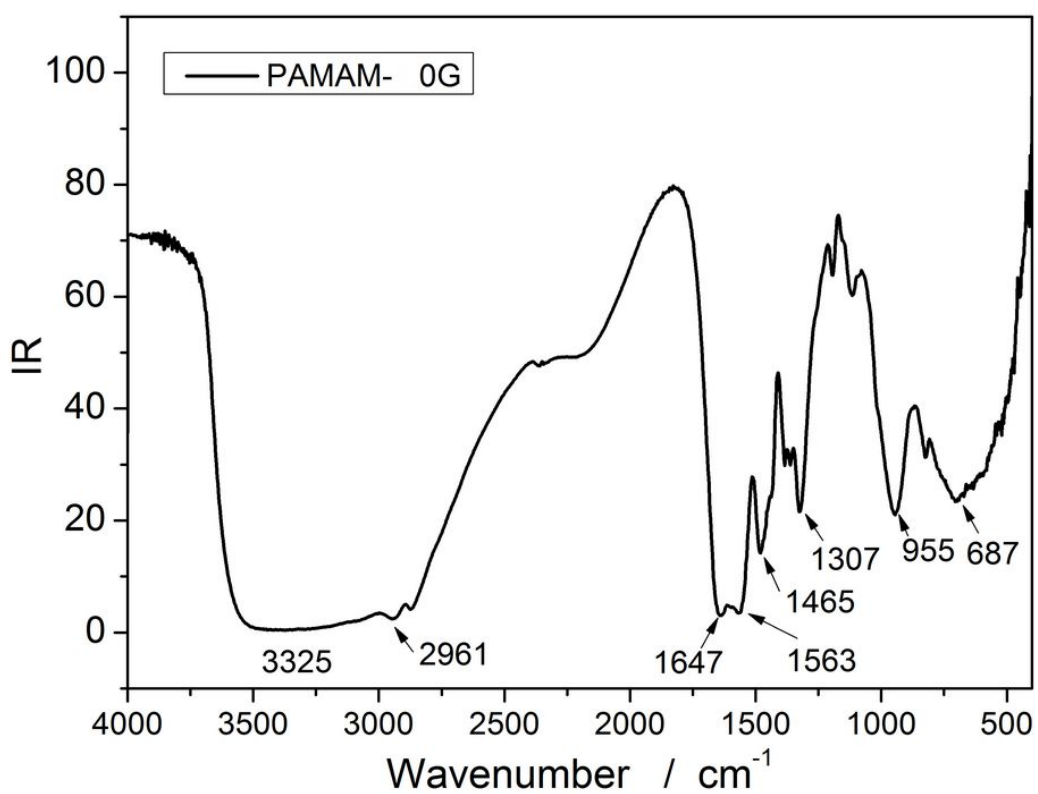


**Figure S4** IR of PNS-G0





**PAMAM-G0**



**Figure S6** IR of PAMAM-G0