

Supporting Information

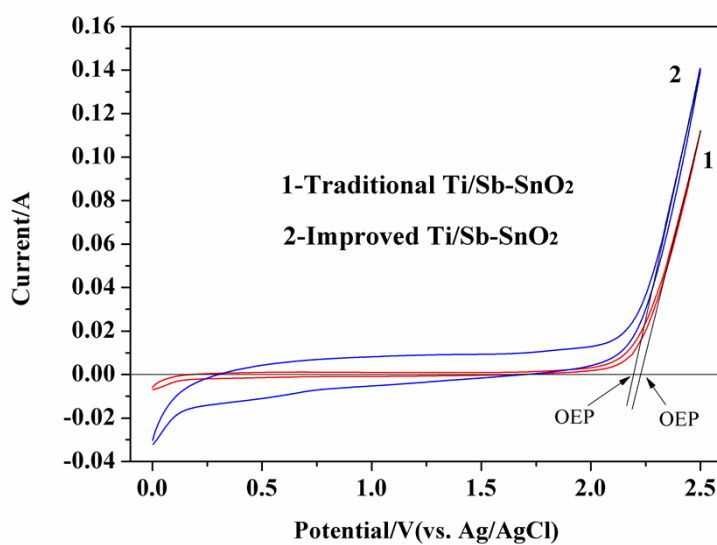


Fig. S1 Illustration of OEP determination using tangent method

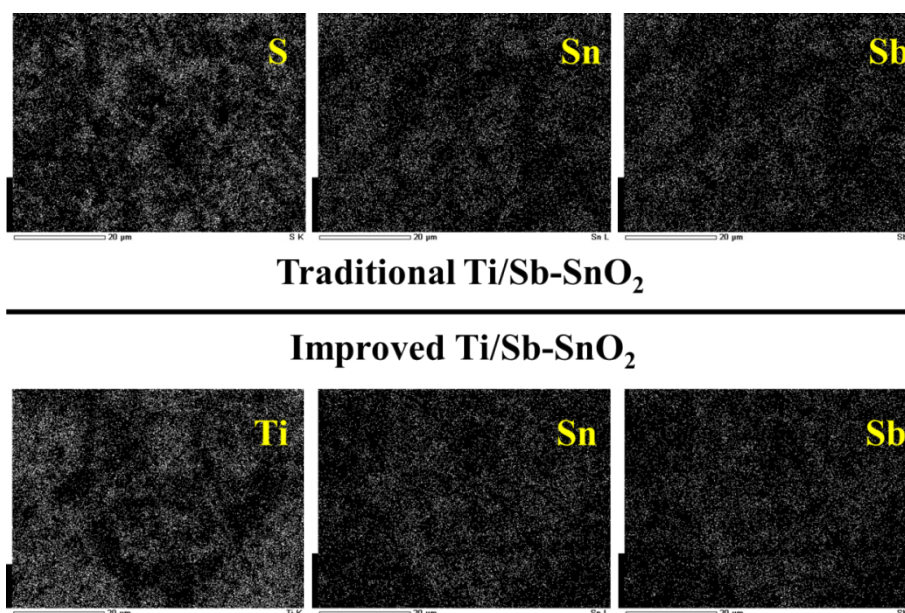


Fig. S2 Element distribution of deactivated conventional Ti/Sb-SnO₂ and deactivated improved

Ti/Sb-SnO₂ after the accelerated lifetime test (room temperature, 0.5 M H₂SO₄, anodic current

density 200 mA cm⁻², electrode area of 2 cm²)

