

Supporting Information

Preparation and characterization of PbO₂ electrodes from electro-deposition solutions with different copper concentration

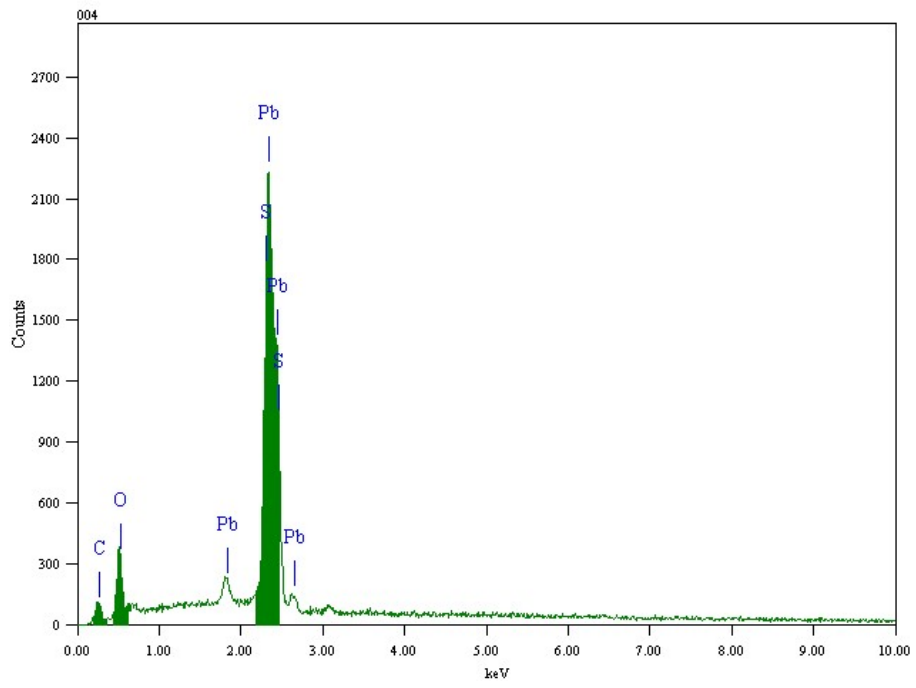
Xu Hao¹, Shao Dan¹, Zhang Qian¹, Yang Honghui^{1*}, Wei Yan^{1,2**}

¹Department of Environmental Science and Engineering, Xi'an Jiaotong University, Xi'an, 710049, China

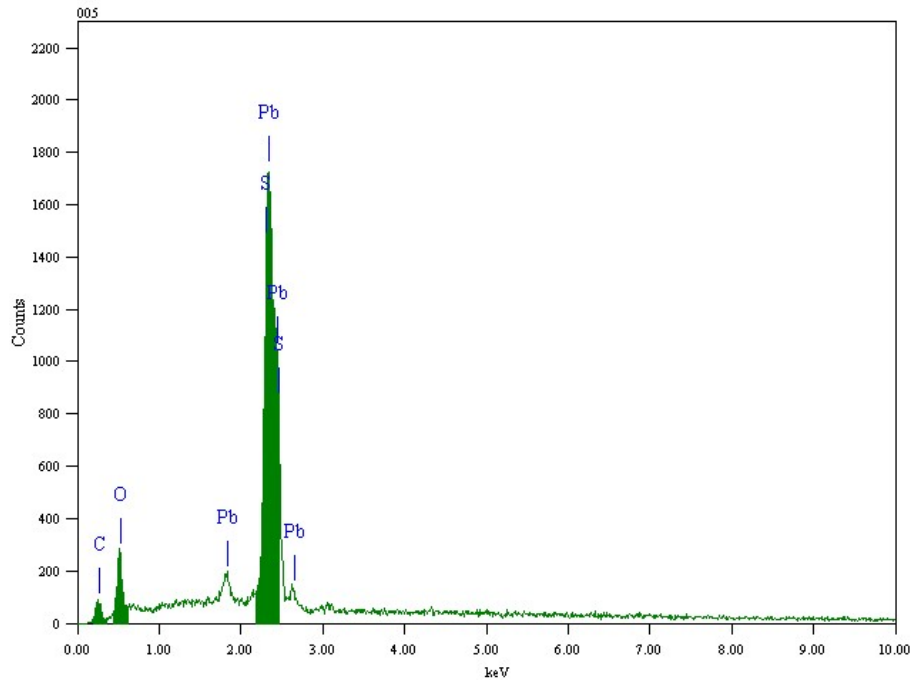
²The State Key Laboratory of Multiphase Flow in Power Engineering, Xi'an Jiaotong University, Xi'an, 710049, China

* and **: Corresponding author. Fax: +86-29-82664731

Email: yanghonghui@mail.xjtu.edu.cn (H. H. Yang), yanwei@mail.xjtu.edu.cn (W. Yan)

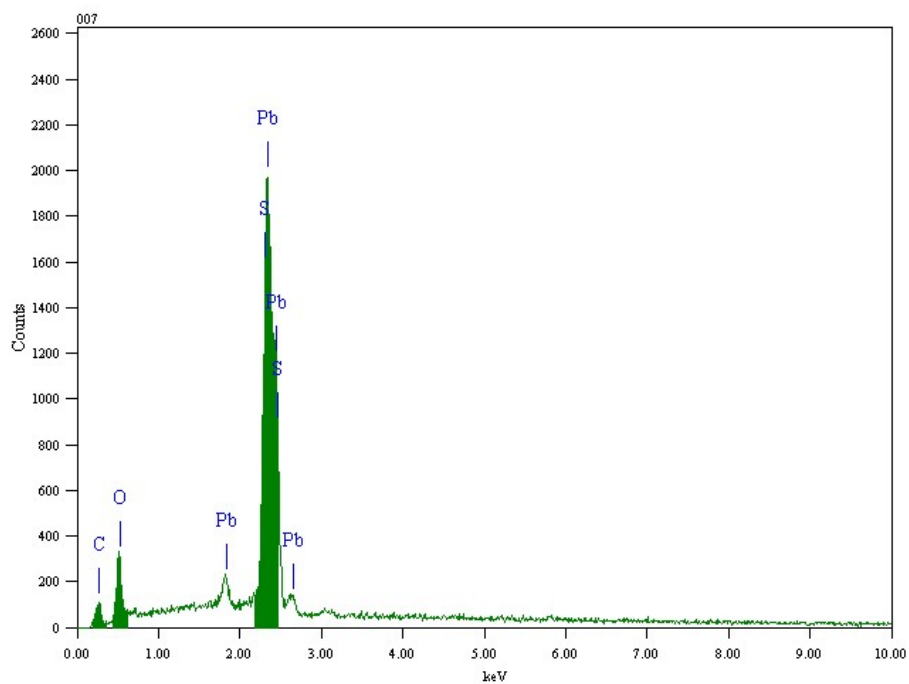


(a)

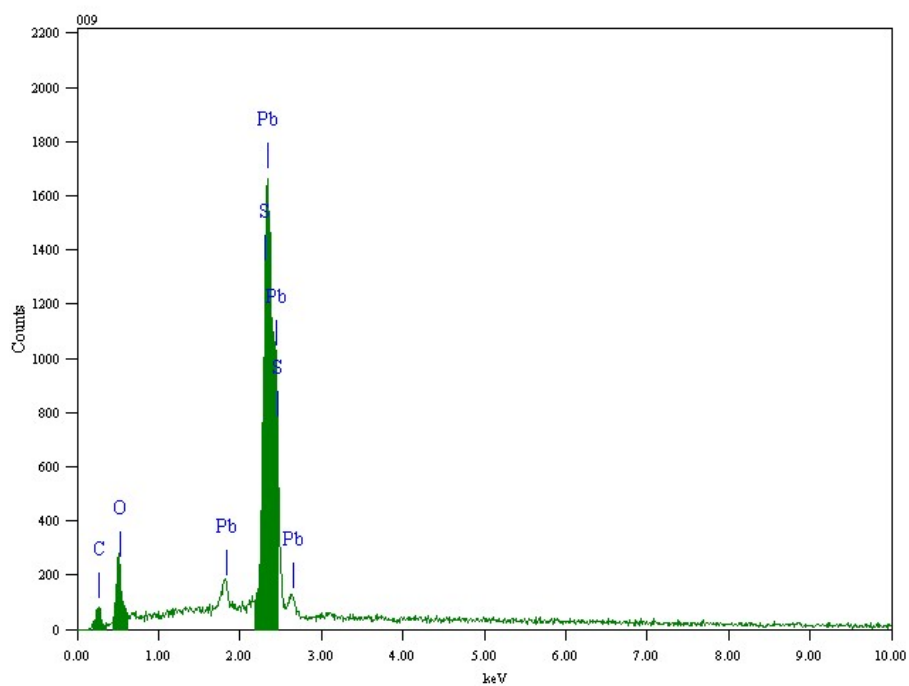


(b)

(c)



(c)



(d)

Fig. S1. EDS analysis of the PbO_2 electrodes with different copper nitrate concentration (a: $0 \text{ mol}\cdot\text{L}^{-1}$, b: $0.1 \text{ mol}\cdot\text{L}^{-1}$, c: $0.3 \text{ mol}\cdot\text{L}^{-1}$, d: $0.4 \text{ mol}\cdot\text{L}^{-1}$)