

Supporting Information

Quantitative Determination of Methylene Blue in Environmental Samples by Solid Phase Extraction and Ultra Performance Liquid Chromatography- Tandem Mass Spectrometry: A Green Approach

Mohammad Rizwan Khan^a, Moonis Ali Khan^{a,*}, Zeid Abdullah Alothman^a,

Ibrahim Hotan Alsohaimi^a, Mu Naushad^a, Nora H. Al-Shaalan^b

^aAdvanced Materials Research Chair, Department of Chemistry, College of Science,
King Saud University, P.O. Box 2455, Riyadh 11451, Kingdom of Saudi Arabia

^bDepartment of Chemistry, College of Science, Princess Nora Bint Abdul Rahman University,
Riyadh, Saudi Arabia

*Corresponding author

Tel: +966 14674198; Fax: +966 14675992; E-mail: moonisalikhan@gmail.com;

mokhan@ksu.edu.sa (M.A. Khan)

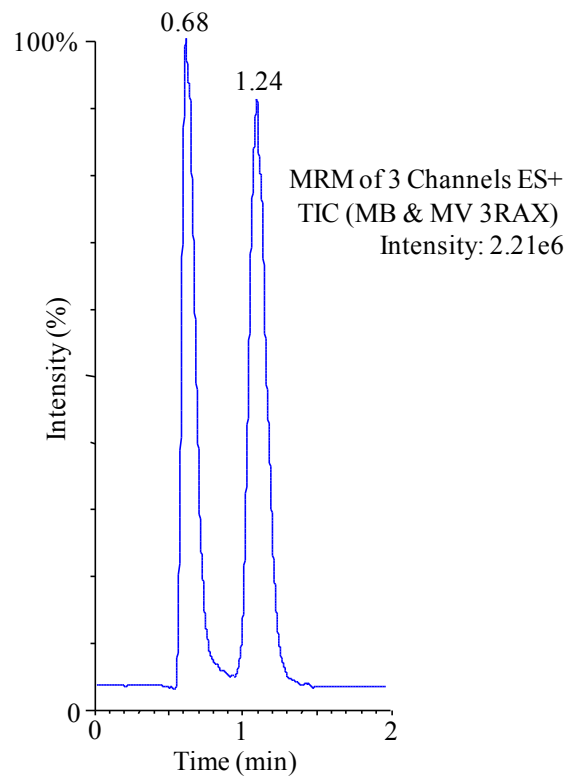


Figure S1. UPLC-MS/MS chromatograms of standard mixture (1 $\mu\text{g/mL}$) of MB (RT, 0.68) & MV 3RAX (RT, 1.24).