

## Supporting information

### High photocatalytic performance by engineering Bi<sub>2</sub>WO<sub>6</sub> nanoneedles onto graphene sheets

Zhihua Hua,<sup>a</sup> Jingjing Guo,<sup>a</sup> Shenmin Zhu,<sup>\*a</sup> Jun Ma,<sup>b</sup> Yongliang Liao,<sup>a</sup> Di Zhang,<sup>\*a</sup>

<sup>a</sup> State Key Laboratory of Metal Matrix Composites, Shanghai Jiao Tong University, 800 Dongchuan Road, Shanghai, 200240, P. R. China. E-mail: smzhu@sjtu.edu.cn; zhangdi@sjtu.edu.cn.

<sup>b</sup> School of Engineering, University of South Australia, Mawson Lakes, SA5095, Australia

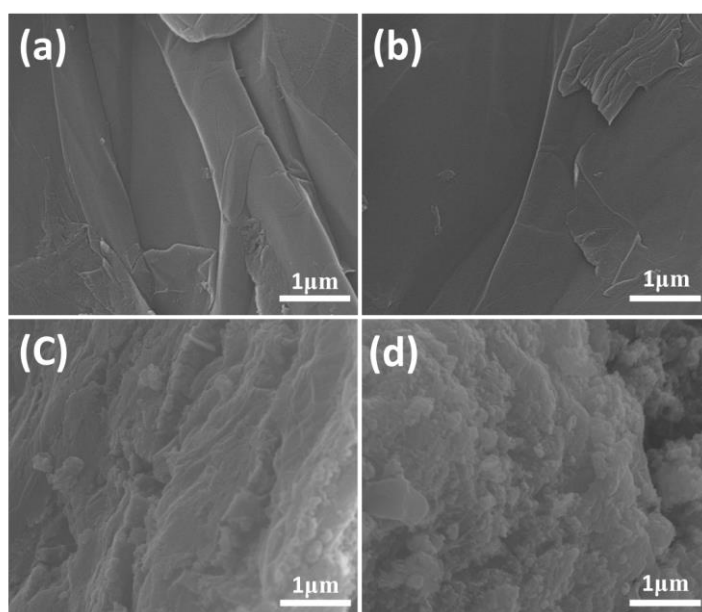


Fig. S1 SEM micrographs of GO(a), RGO(b), GO-BWO(c), RGO-BWO(d)

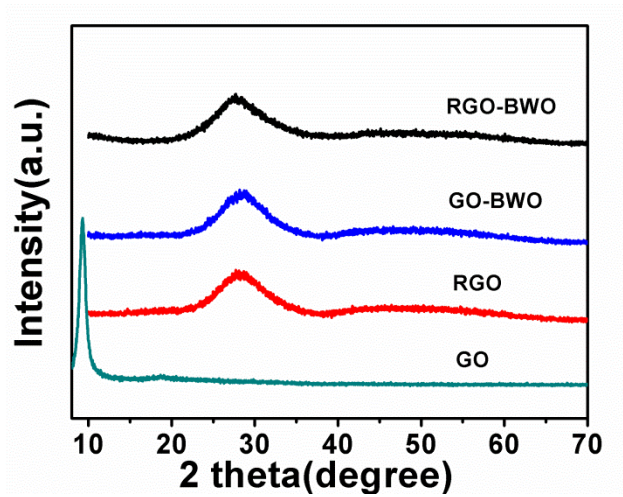


Fig. S2 XRD patterns of GO, RGO, GO-BWO, RGO-BWO

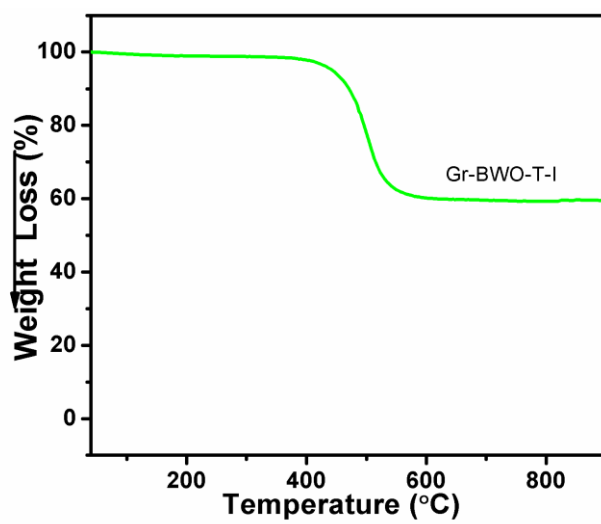


Fig. S3 TGA curve of Gr-BWO-T-I