

Electronic Supplementary Information

Involuntary Graphene Intake with food and medicine

Manav Saxena and Sabyasachi Sarkar*

Department of Chemistry, Indian Institute of Engineering Science and Technology

Shibpur, Howrah-711103, West Bengal, India.

Tel: +91 33 2668 6464; E-mail: abya@iitk.ac.in

Fig. S1. FESEM of raw charcoal

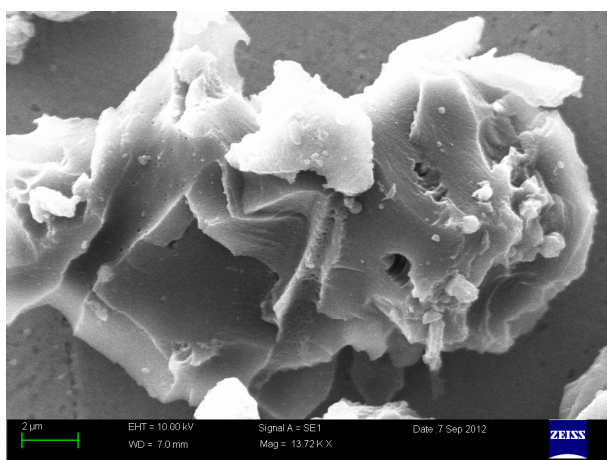


Fig. S2. FESEM of treated charcoal, shows the presence of polyhedral carbon nanostructures along with sheet type structures (white arrow)

