



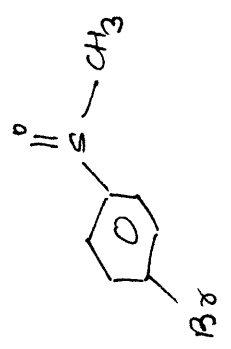
Current Data Parameters
NAME NAK
EXPNO 250
PROCNO 1

F2 - Acquisition Parameters
Date_ 20110327
Time 22.21
INSTRUM spect
PROBHD 5 mm BBO BB-1H
PULPROG zg30
TD 65536
SOLVENT CDCl3
NS 16
DS 2
SWH 6188.119 Hz
FIDRES 0.094423 Hz
AQ 5.2953587 sec
RG 144
DW 80.800 usec
DE 6.00 usec
TE 300.0 K
D1 1.00000000 sec
TD0 1

==== CHANNEL f1 =====
NUC1 1H
P1 11.00 usec
PL1 C.00 dB
SFO1 300.1318534 MHz

F2 - Processing parameters
SI 32768
SF 300.1300000 MHz
WDW EM
SSB 0
LB C.30 Hz
GB 0
PC 1.00

Oxi_4-bromothioanisole

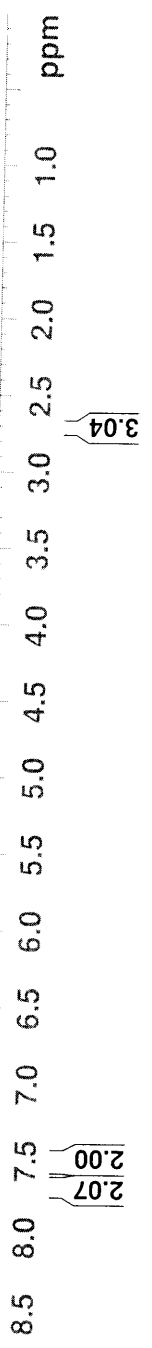


2.697
2.689

7.668
7.662
7.640
7.632
7.518
7.511
7.489
7.482
7.268

7.668
7.662
7.640
7.632
7.518
7.511
7.489
7.482

7.7 7.6 7.5 ppm





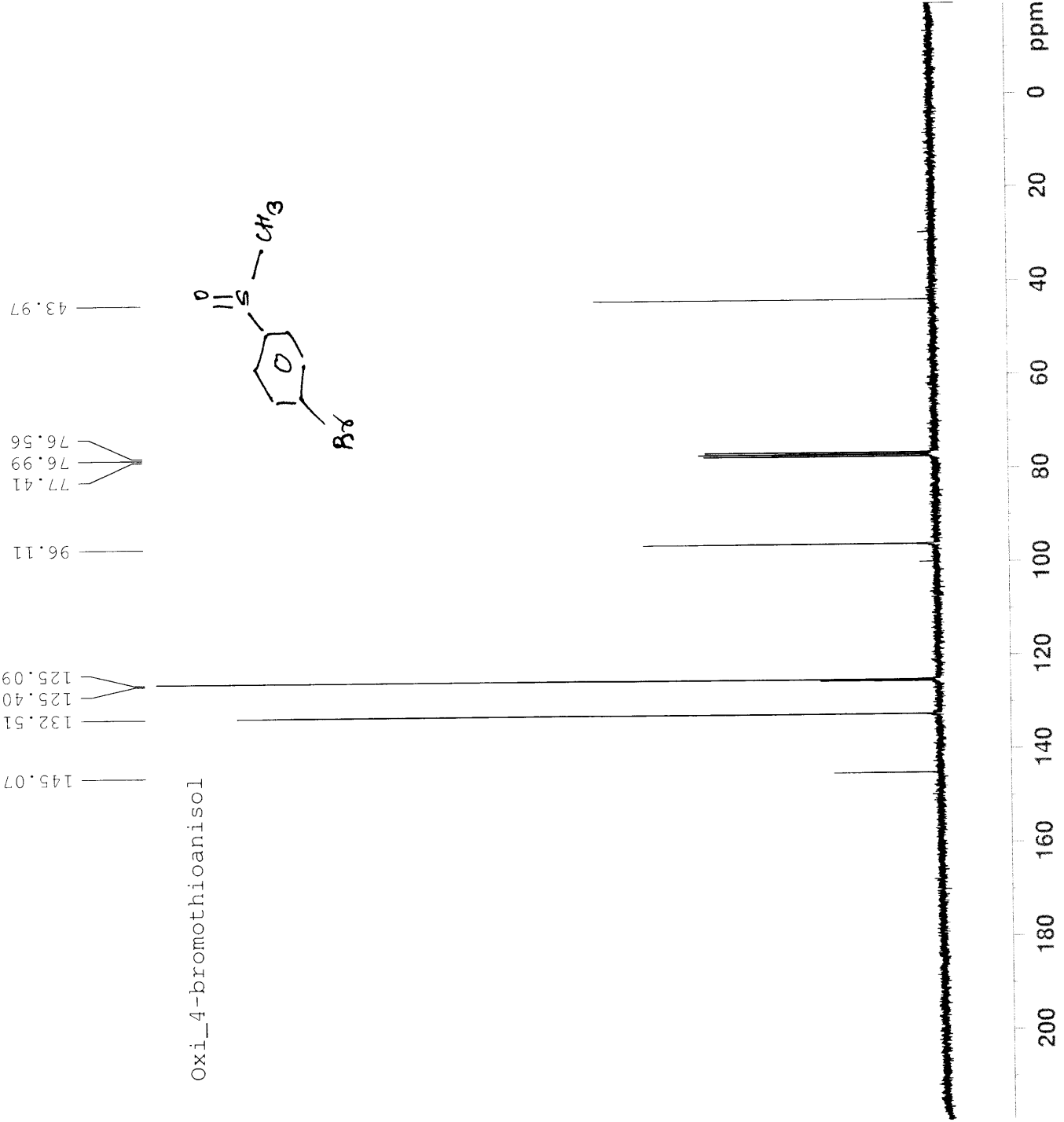
Current Data Parameters
NAME MAK
EXPNO 262
PROCNO 1

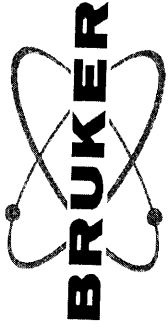
F2 - Acquisition Parameters
Date_ 20110327
Time 23.46
INSTRUM spect
PROBHD 5 mm BBO BB-1H
PULPROG zgpg30
TD 65536
SOLVENT CDCl3
NS 941
DS 4
SWH 18028.846 Hz
FIDRES 0.275098 Hz
AQ 1.8175818 sec
RG 32800
DW 27.733 usec
DE 6.00 usec
TE 300.0 K
D1 2.00000000 sec
d11 0.03000000 sec
DELTA 1.89999998 sec
TD0 1

==== CHANNEL f1 =====
NUC1 13C
P1 9.25 usec
PL1 -1.00 dB
SFO1 75.4752953 MHz

==== CHANNEL f2 =====
CPDPRG2 waltz16
NUC2 1H
PCPD2 80.00 usec
PL12 17.00 dB
PL13 17.00 dB
PL2 0.00 dB
SFO2 300.1312005 MHz

F2 - Processing parameters
SI 32768
SF 75.4677490 MHz
WDW EM
SSB 0
LB 1.00 Hz
GB 0
PC 1.40





Current Data Parameters
NAME MAK
EXPNO 261
PROCNO 1

F2 - Acquisition Parameters

Date_ 20110327
Time_ 22.53
INSTRUM spect
PROBHD 5 mm BBO BB-1H
PULPROG dept135
TD 65536
SOLVENT CDCl3
NS 192
DS 8
SWH 18115.941 Hz
FIDRES 0.276427 Hz
AQ 1.8088436 sec
RG 2050
DW 27.600 usec
DE 6.00 usec
TE 300.0 K
CNS2 145.0000000
D1 4.00000000 sec
d12 0.00002000 sec
d2 0.00344828 sec
DELTA 0.00001178 sec
TDO 1

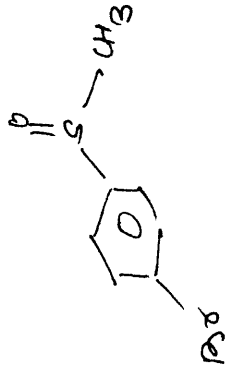
==== CHANNEL f1 =====
NUC1 13C
P1 9.25 usec
P2 18.50 usec
PL1 -1.00 dB
SFO1 75.4745411 MHz

==== CHANNEL f2 =====
CPDPRG2 waltz16
NUC2 1H
P3 11.00 usec
P4 22.00 usec
PCPD2 80.00 usec
PL12 17.00 dB
PL2 0.00 dB
SFO2 300.1315007 MHz

F2 - Processing parameters

SF 32768
SF 75.4677490 MHz
WDW EM
SSB 0
LB 1.00 Hz
GB 0
PC 1.40

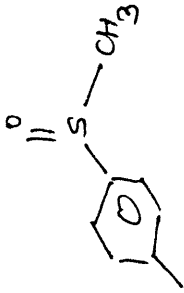
132.515
125.094
43.969



Oxi_4-bromothiobenzamide



Oxi_Me-P-Tolyl-Sulfoxide



7.508
7.481
7.301
7.275

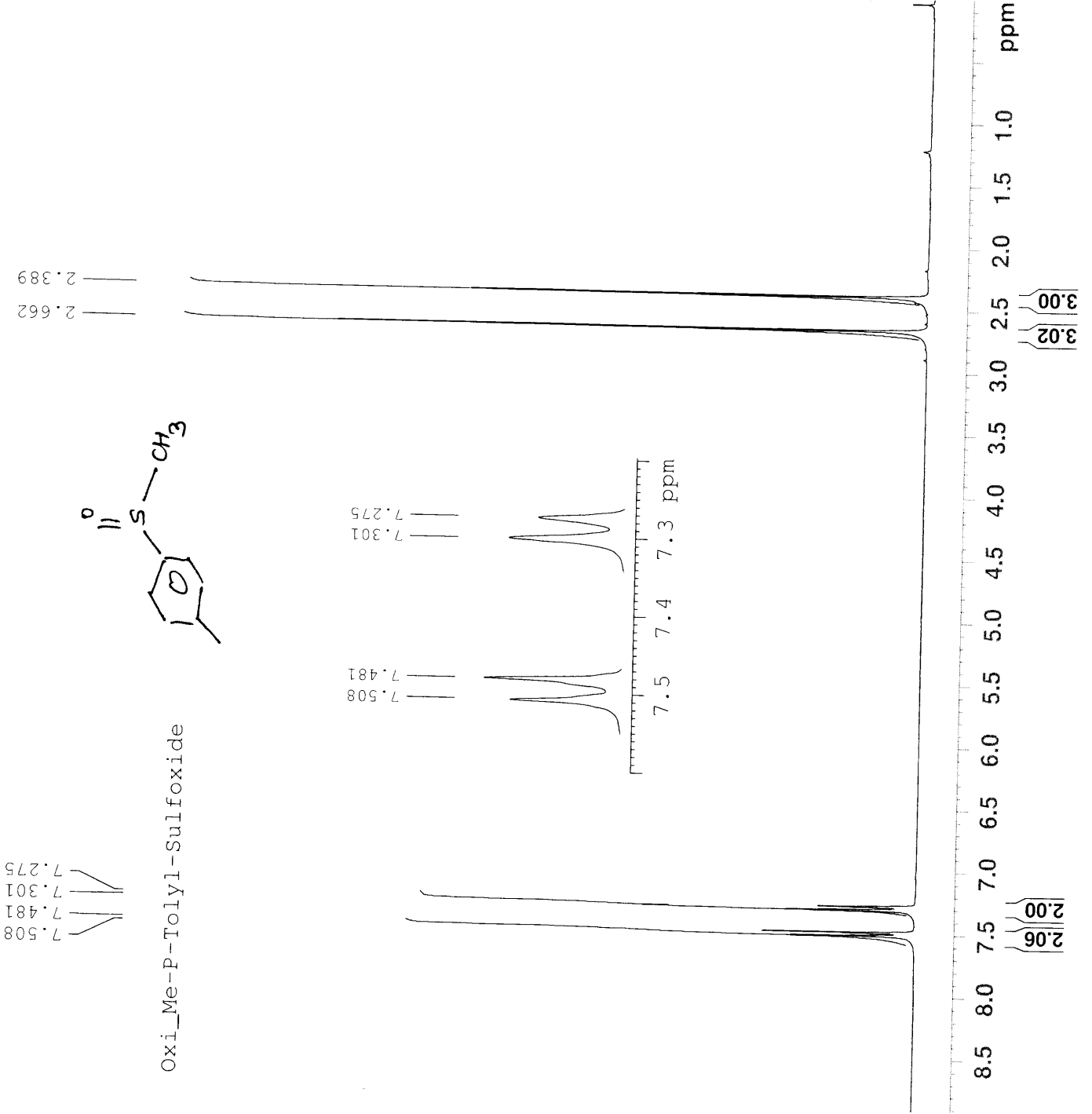
2.662
2.389

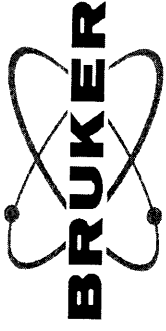
Current Data Parameters
NAME MAK
EXPNO 254
PROCNO 1

F2 - Acquisition Parameters
Date_ 20110325
Time 22.46
INSTRUM spect
PROBHD 5 mm BBO BB-1H
PULPROG zg30
TD 65536
SOLVENT CDC13
NS 16
DS 2
SWH 6188.119 Hz
FIDRES 0.094423 Hz
AQ 5.2953587 sec
RG 71.8
DW 80.800 usec
DE 6.00 usec
TE 300.0 K
D1 1.00000000 sec
TD0 1

==== CHANNEL f1 =====
NUC1 1H
P1 11.00 usec
PL1 0.00 dB
SFO1 300.1318534 MHz

F2 - Processing parameters
SI 32768
SF 300.1300000 MHz
WDW EM
SSB 0
LB 0.30 Hz
GB 0
PC 1.00





Current Data Parameters
NAME NAK
EXPNO 256
PROCNO 1

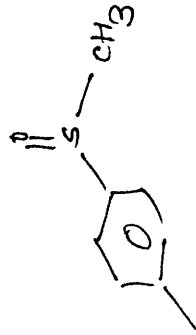
F2 - Acquisition Parameters
Date_ 20110326
Time 0.13
INSTRUM spect
PROBHD 5 mm BBO BB-1H
PULPROG zgpg30
TD 65536
SOLVENT CDCl3
NS 521
DS 4
SWH 18028.846 Hz
FIDRES 0.275098 Hz
AQ 1.8175818 sec
RG 32800
DM 27.733 usec
DE 6.00 usec
TE 300.0 K
D1 2.00000000 sec
d11 0.03000000 sec
DELTA 1.89999998 sec
TD0 1

==== CHANNEL f1 =====
NUC1 13C
P1 9.25 usec
PL1 -1.00 dB
SFO1 75.4752953 MHz

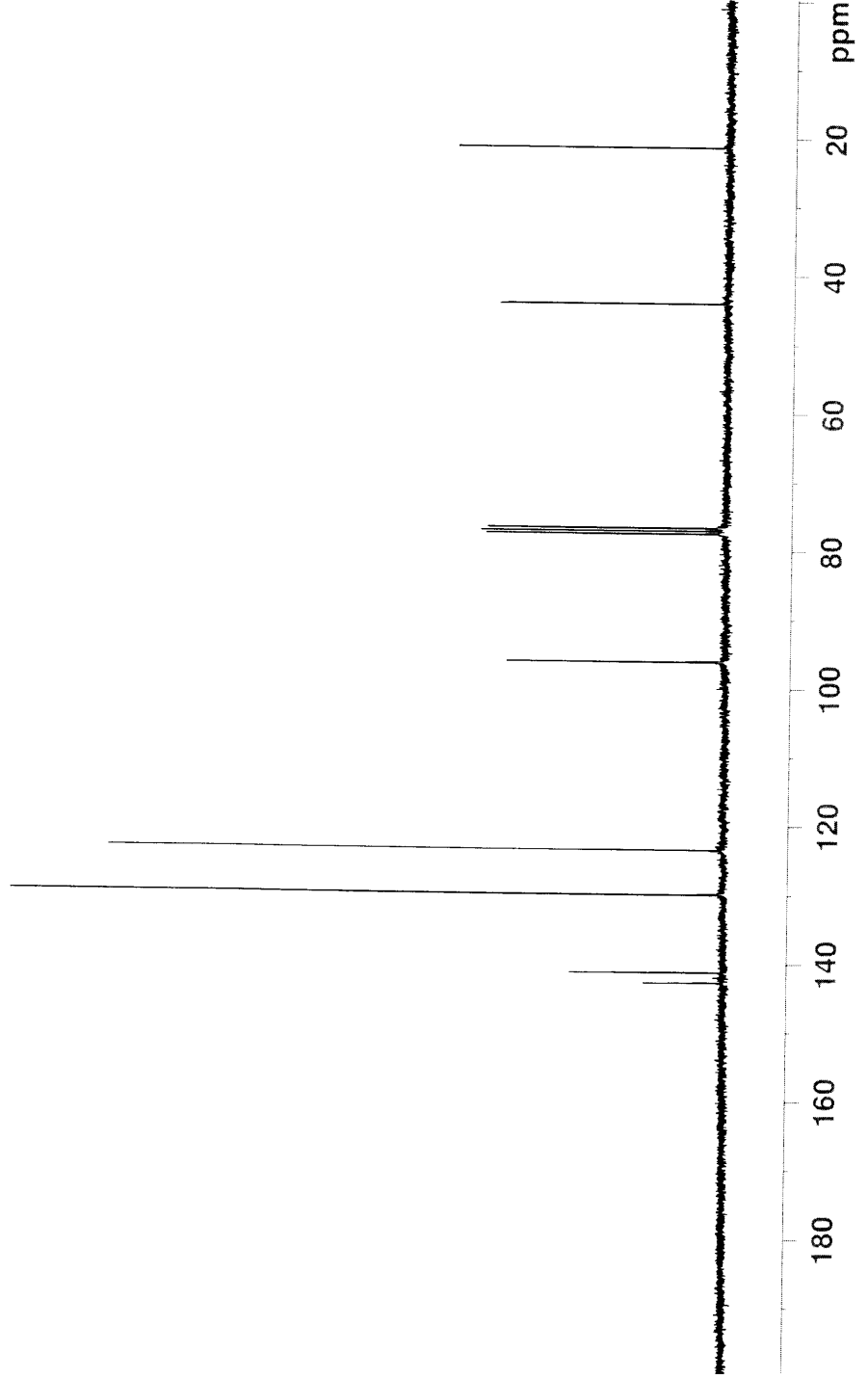
==== CHANNEL f2 =====
CPDPRG2 waltz16
NUC2 1H
PCPD2 80.00 usec
PL12 17.00 dB
PL13 17.00 dB
PL2 0.00 dB
SFO2 300.1312005 MHz

F2 - Processing parameters
SI 32768
SF 75.4677490 MHz
WDW EM
SSB 0
LB 1.00 Hz
GB 0
PC 1.40

142.74
141.26
129.94
123.48
96.10
77.46
77.03
76.61
44.00
21.35



Oxi-Me-P-Tolyl-S





Current Data Parameters
NAME MAK
EXPNO 255
PROCNO 1

F2 - Acquisition Parameters
Date_ 20110325
Time 22.55
INSTRUM spect
PROBHD 5 mm BBO BB-1H
PULPROG dept135
TD 65536
SOLVENT CDC13
NS 515
DS 8
SWH 18115.941 Hz
FIDRES 0.276427 Hz
AQ 1.8088436 sec
RG 2050
DW 27.600 usec
DE 6.00 usec
TE 300.0 K
CNST2 145.0000000
D1 4.00000000 sec
d12 0.0002000 sec
d2 0.00344828 sec
DELTA 0.00001178 sec
TD0 1

==== CHANNEL f1 =====
NUC1 13C
P1 9.25 usec
P2 18.50 usec
PL1 -1.00 dB
SFO1 75.4745411 MHz

==== CHANNEL f2 =====
CPDPRG2 waltz16
NUC2 1H
P3 11.00 usec
P4 22.00 usec
PCPD2 80.00 usec
PL12 17.00 dB
PL2 0.00 dB
SFO2 300.1315007 MHz

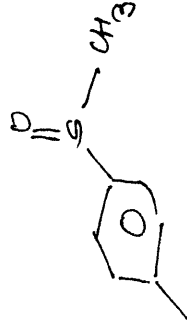
F2 - Processing parameters
SI 32768
SF 75.4677490 MHz
WDW EM
SSB 0
LB 1.00 Hz
GB 0
PC 1.40

21.362

44.004

123.484

129.944





Current Data Parameters
 NAME MAK
 EXPNO 263
 PROCNO 1

F2 - Acquisition Parameters
 Date_ 20110328
 Time 23.09
 INSTRUM spect
 PROBHD 5 mm BBO BB-1H
 PULPROG zg30
 TD 65536
 SOLVENT CDCl3
 NS 16
 DS 2
 SWH 6188.119 Hz
 FIDRES 0.094423 Hz
 AQ 5.2953587 sec
 RG 22.6
 DW 80.800 usec
 DE 6.00 usec
 TE 300.0 K
 D1 1.00000000 sec
 TD0 1

==== CHANNEL f1 =====
 NUC1 1H
 P1 11.00 usec
 PL1 0.00 dB
 SFO1 300.1318534 MHz

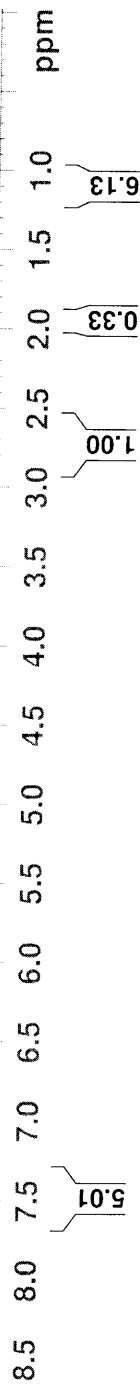
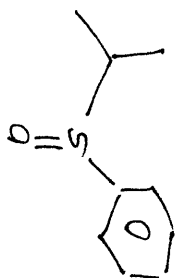
F2 - Processing parameters
 SI 32768
 SF 300.1300000 MHz
 WDW EM
 SSB 0
 LB 0.30 Hz
 GB 0
 PC 1.00

2.781
2.771
2.758
2.748
2.735
2.726
2.712
2.703
2.689
2.680
1.929
1.918
1.204
1.193
1.181
1.151
1.141
1.128
1.118
1.045
1.033
1.022

1.204
1.193
1.181
1.151
1.141
1.128
1.118
1.045
1.033
1.022
1.011

7.505
7.501
7.495
7.489
7.483
7.478
7.472
7.462
7.443
7.437
7.425
7.420
7.411
7.405
7.395
7.388
7.378

Isopropyl benzene-Soxide



5.01

1.00

0.33

6.13



Current Data Parameters
NAME MAK
EXPNO 264
PROCNO 1

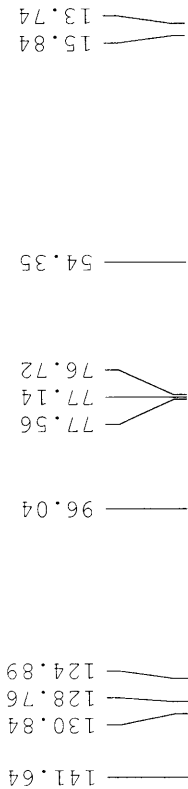
F2 - Acquisition Parameters

Date_ 20110328
Time 23.37
INSTRUM spect
PROBHD 5 mm BBO BB-1H
PULPROG zgpg30
TD 65536
SOLVENT CDC13
NS 309
DS 4
SWH 18028.846 Hz
FIDRES 0.275098 Hz
AQ 1.8175818 sec
RG 32800
DW 27.733 usec
DE 6.00 usec
TE 300.0 K
D1 2.00000000 sec
d11 0.03000000 sec
DELTA 1.89999998 sec
TD0 1

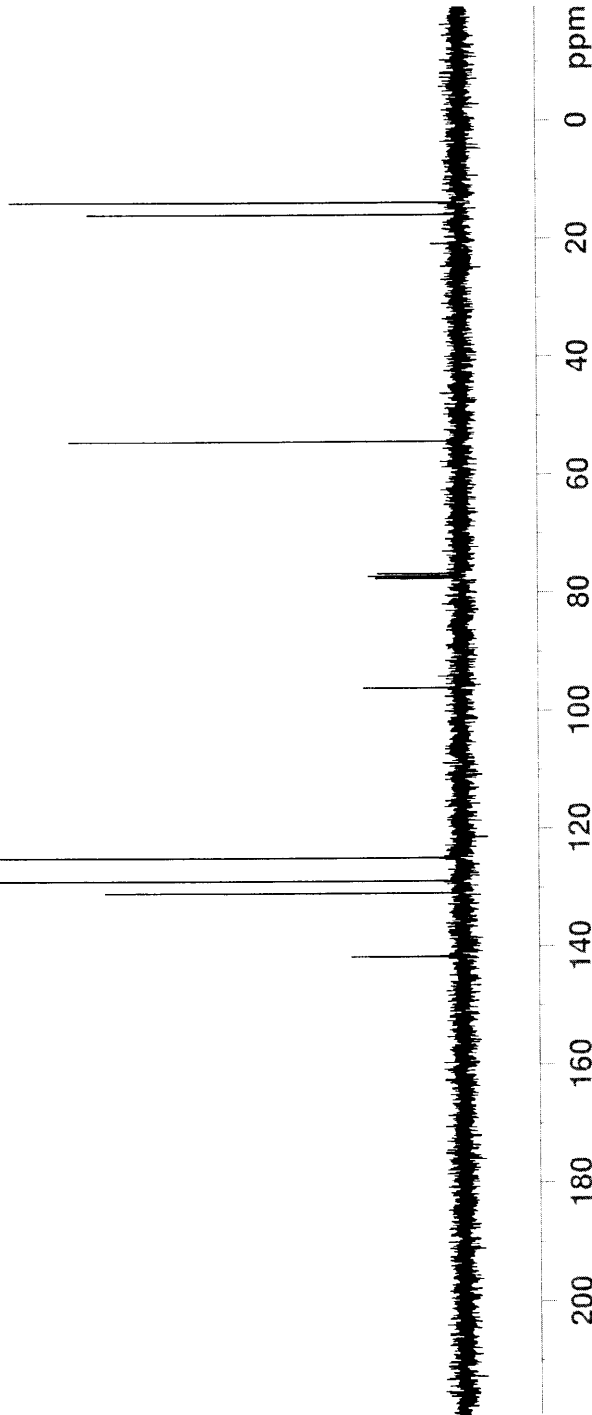
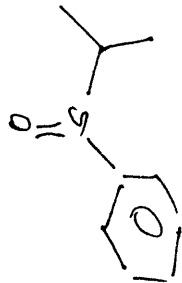
==== CHANNEL f1 =====
NUC1 13C
P1 9.25 usec
PL1 -1.00 dB
SFO1 75.4752953 MHz

==== CHANNEL f2 =====
CPDPRG2 waltz16
NUC2 1H
PCPD2 80.00 usec
PL12 17.00 dB
PL13 -7.00 dB
PL2 0.00 dB
SFO2 300.1312005 MHz

F2 - Processing parameters
SI 32768
SF 75.4677490 MHz
WDW EM
SSB 0
LB 1.00 Hz
GB 0
PC 1.40

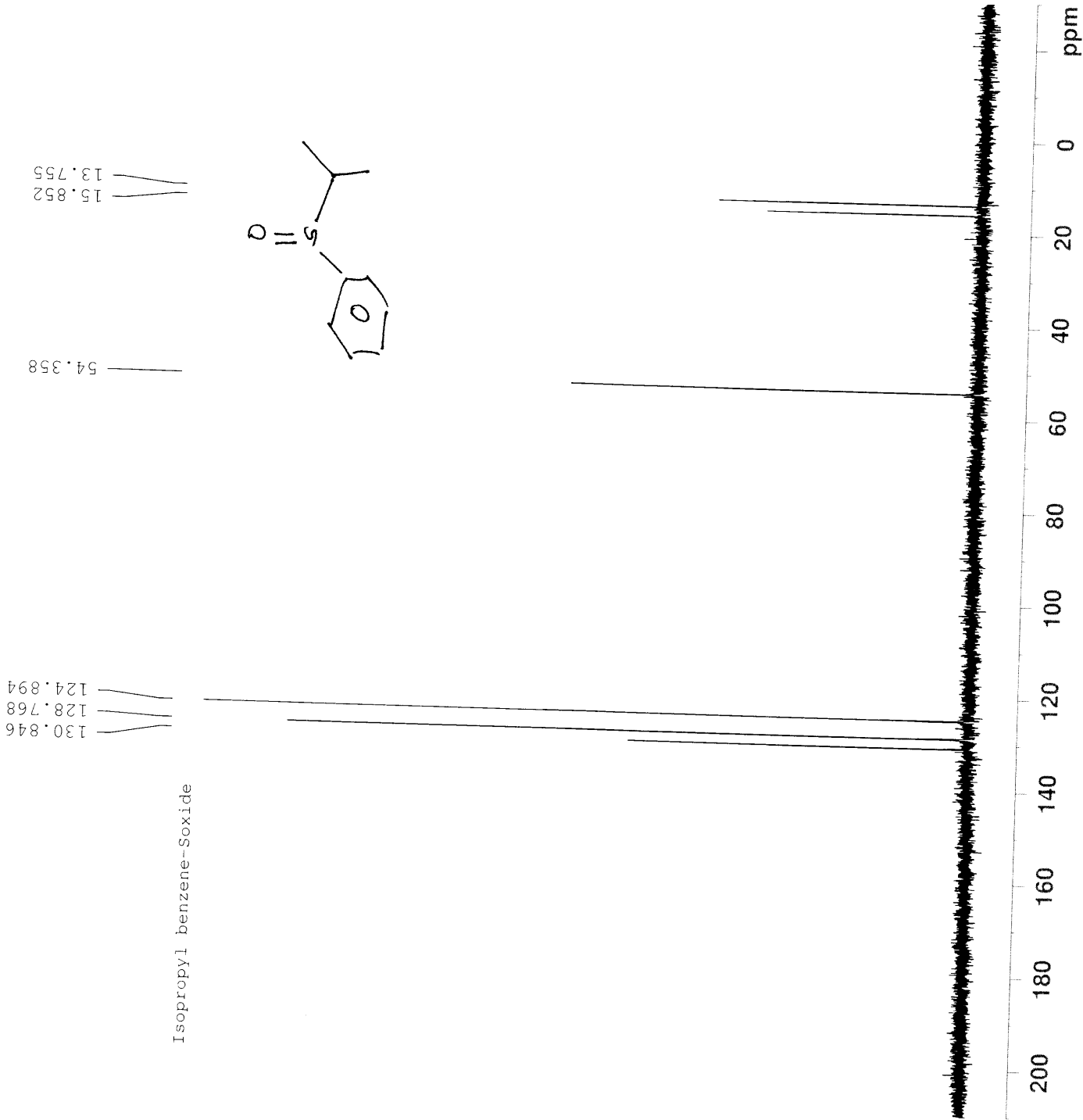
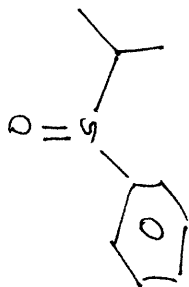


Isopropyl benzene-Soxide





Isopropyl benzene-Soxide



Current Data Parameters
NAME WAK
EXPNO 265
PROCNO 1

F2 - Acquisition Parameters
Date_ 20110328
Time 23.19
INSTRUM spect
PROBHD 5 mm BBO BB-1H
PULPROG depl135
TD 65536
SOLVENT CDC13
NS 179
DS 8
SWH 18115.941 Hz
FIDRES 0.276427 Hz
AQ 1.8088436 sec
RG 2050
DW 27.600 usec
DE 6.00 usec
TE 300.0 K
CNST2 145.0000000
D1 4.00000000 sec
d12 0.00002000 sec
d2 0.00344828 sec
DELTA 0.00001178 sec
TD0 1

==== CHANNEL f1 =====
NUC1 13C
P1 9.25 usec
P2 18.50 usec
PL1 -1.00 dB
SFO1 75.4745411 MHz

==== CHANNEL f2 =====
CPDPRG2 waltz16
NUC2 1H
P3 11.00 usec
P4 22.00 usec
PCPD2 80.00 usec
PL12 17.00 dB
PL2 0.00 dB
SFO2 300.1315007 MHz

F2 - Processing Parameters
SI 32768
SF 75.4677490 MHz
WDW EM
SSB 0
LB 1.00 Hz
GB 0
PC 1.40



MAM-Oxi-NO2

3.143

Current Data Parameters
 NAME DNP
 EXPNO 138
 PROCNO 1

F2 - Acquisition Parameters
 Date_ 20131026
 Time_ 14.55
 INSTRUM spect
 PROBHD 5 mm BBO BB-IH
 PULPROG zg30
 TD 65536
 SOLVENT CDCl3
 NS 16
 DS 2
 SWH 6188.119 Hz
 FIDRES 0.09423 Hz
 AQ 5.2953587 sec
 RG 181
 DW 80.800 usec
 DE 6.00 usec
 TE 300.0 K
 D1 1.0000000 sec
 TDO 1

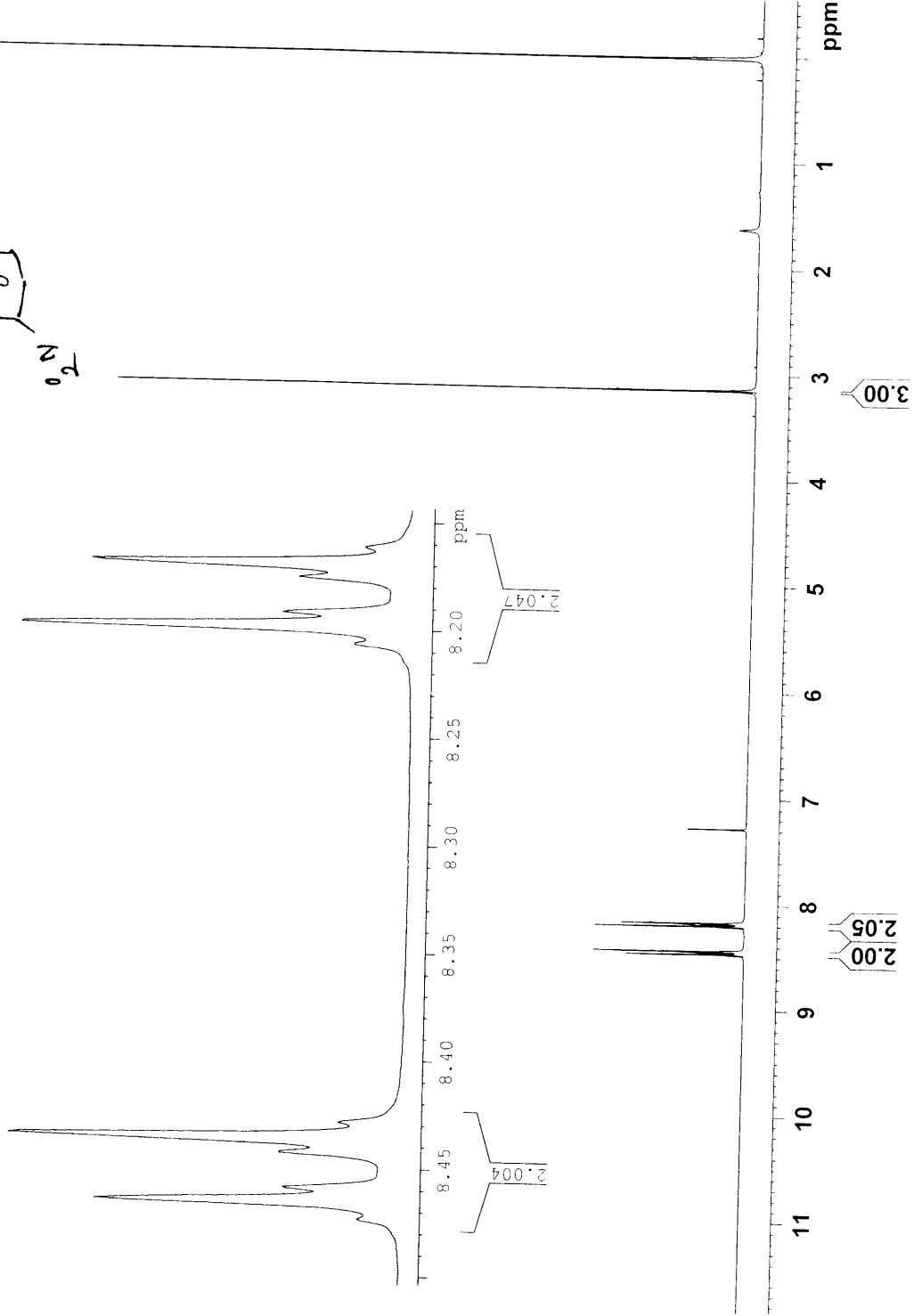
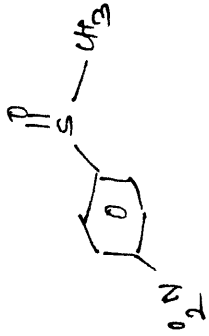
==== CHANNEL f1 =====
 NUC1 1H
 P1 11.38 usec
 PL1 0.00 dB
 SFO1 300.1318534 MHz

F2 - Processing parameters
 SI 32768
 SF 300.1300000 MHz
 WDW EM
 SSB 0
 LB 0.30 Hz
 GB 0
 PC 1.00

8.473
8.466
8.459
8.443
8.436
8.429
8.207
8.199
8.192
8.176
8.169
8.162

8.473
8.466
8.459
8.443
8.436
8.429

8.207
8.199
8.192
8.176
8.169
8.162



11 10 9 8 7 6 5 4 3 2 1 ppm

3.00

2.00

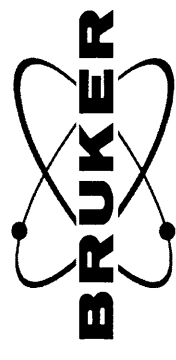
2.05

2.047

2.004

ppm

MAM-Oxi-NO2



Current Data Parameters
 NAME DNP
 EXPNO 139
 PROCNO 1

F2 - Acquisition Parameters
 Date_ 20131026
 Time_ 15.01
 INSTRUM spect
 PROBHD 5 mm BBO BB-1H
 PULPROG zgpg30
 TD 65536
 SOLVENT CDCl3
 NS 2056
 DS 4
 SWH 18028.846 Hz
 FIDRES 0.275098 Hz
 AQ 1.8175818 sec
 RG 32800
 DW 27.733 usec
 DE 6.00 usec
 TE 300.0 K
 D1 2.00000000 sec
 d11 0.03000000 sec
 DELTA 1.89999998 sec
 TDO 1

==== CHANNEL f1 =====
 NUC1 13C
 P1 9.25 usec
 PL1 -1.00 dB
 SF01 75.4752953 MHz

==== CHANNEL f2 =====
 CPDPRG2 waltz16
 NUC2 1H
 PCPD2 80.00 usec
 PL12 16.94 dB
 PL13 16.94 dB
 PL2 0.00 dB
 SF02 300.1312005 MHz

F2 - Processing parameters
 SI 32768
 SF 75.4677490 MHz
 WDW EM
 SSB 0
 LB 1.00 Hz
 GB C
 FFC 1.10

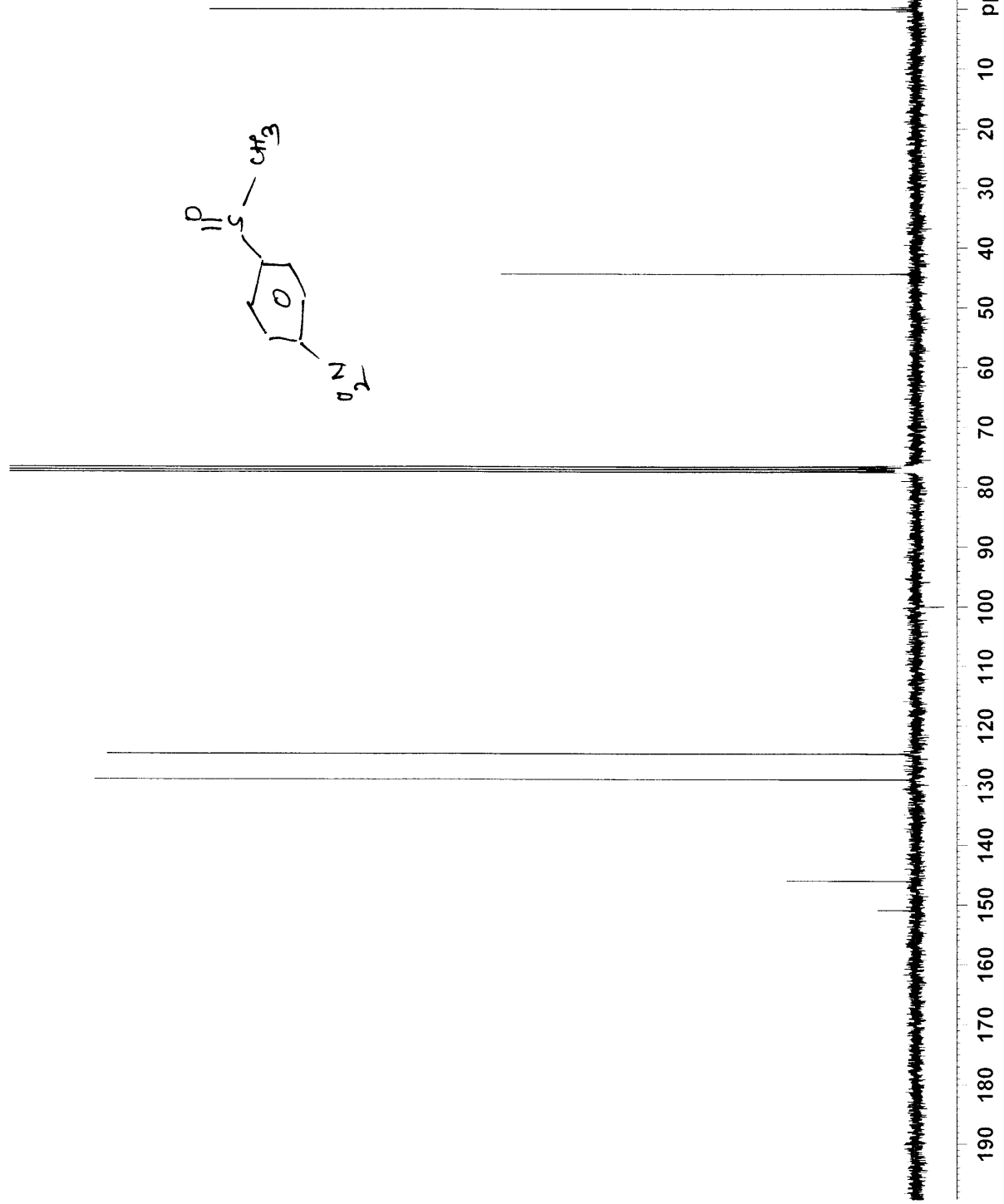
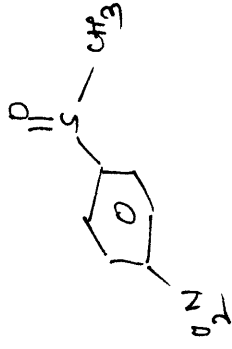
44.31

124.65

128.98

145.96

150.89





Current Data Parameters
NAME DNP
EXPNO 140
PROCNO 1

F2 - Acquisition Parameters
Date_ 20131027
Time_ 10.26
INSTRUM spect
PROBHD 5 mm BBO BB-1H
PULPROG zg30
TD 65536
SOLVENT CDCl3
NS 16
DS 2
SWH 6188.119 Hz
FIDRES 0.094423 Hz
AQ 5.2953587 sec
RG 256
DW 80.800 usec
DE 6.00 usec
TE 300.0 K
D1 1.00000000 sec
TD0 1

==== CHANNEL f1 =====
NUC1 1H
P1 11.38 usec
PL1 0.00 dB
SFO1 300.1318534 MHz

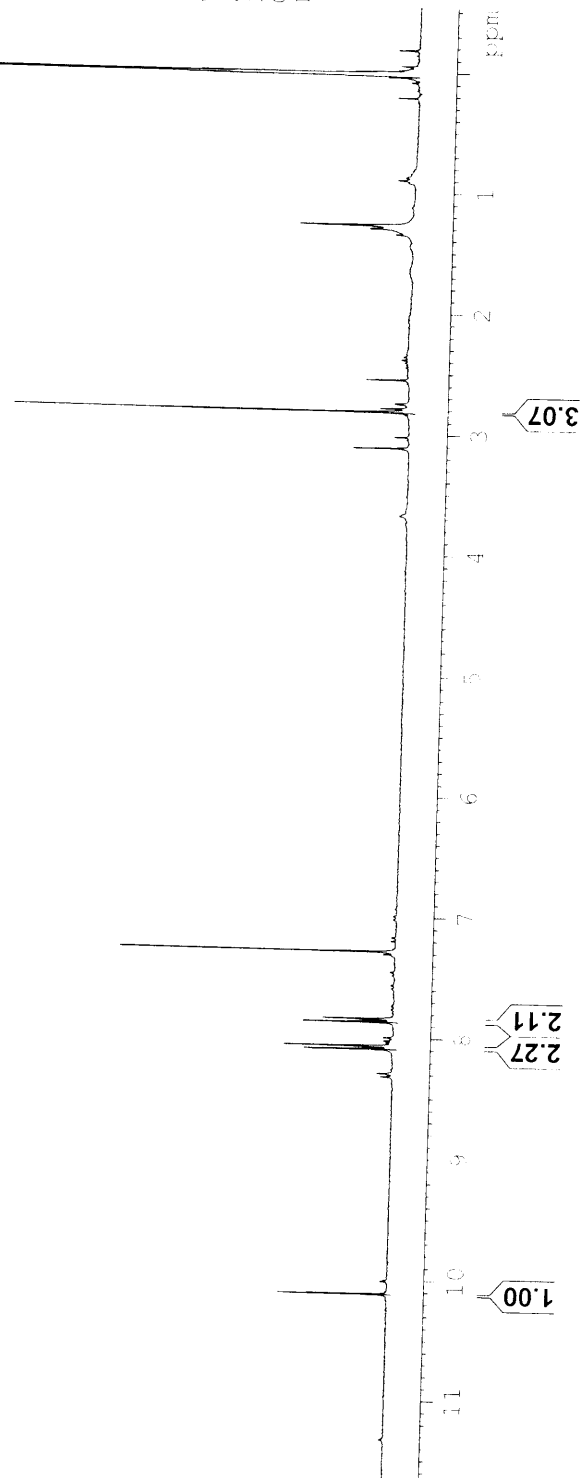
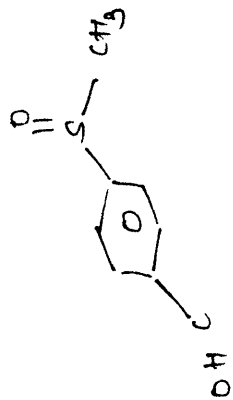
F2 - Processing parameters
SI 32768
SF 300.1300000 MHz
WDW EM
SSB 0
LB 0.30 Hz
GB 0
PC 1.00

10.112

8.088
8.066
8.061
7.862
7.834
7.281

2.814

MAM-OXI-CHO

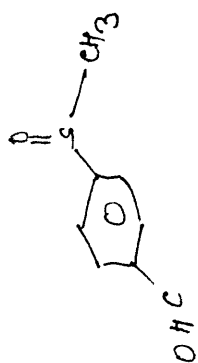




MAM QXI-CHO

191.09
152.43
138.19
130.44
124.20

43.74



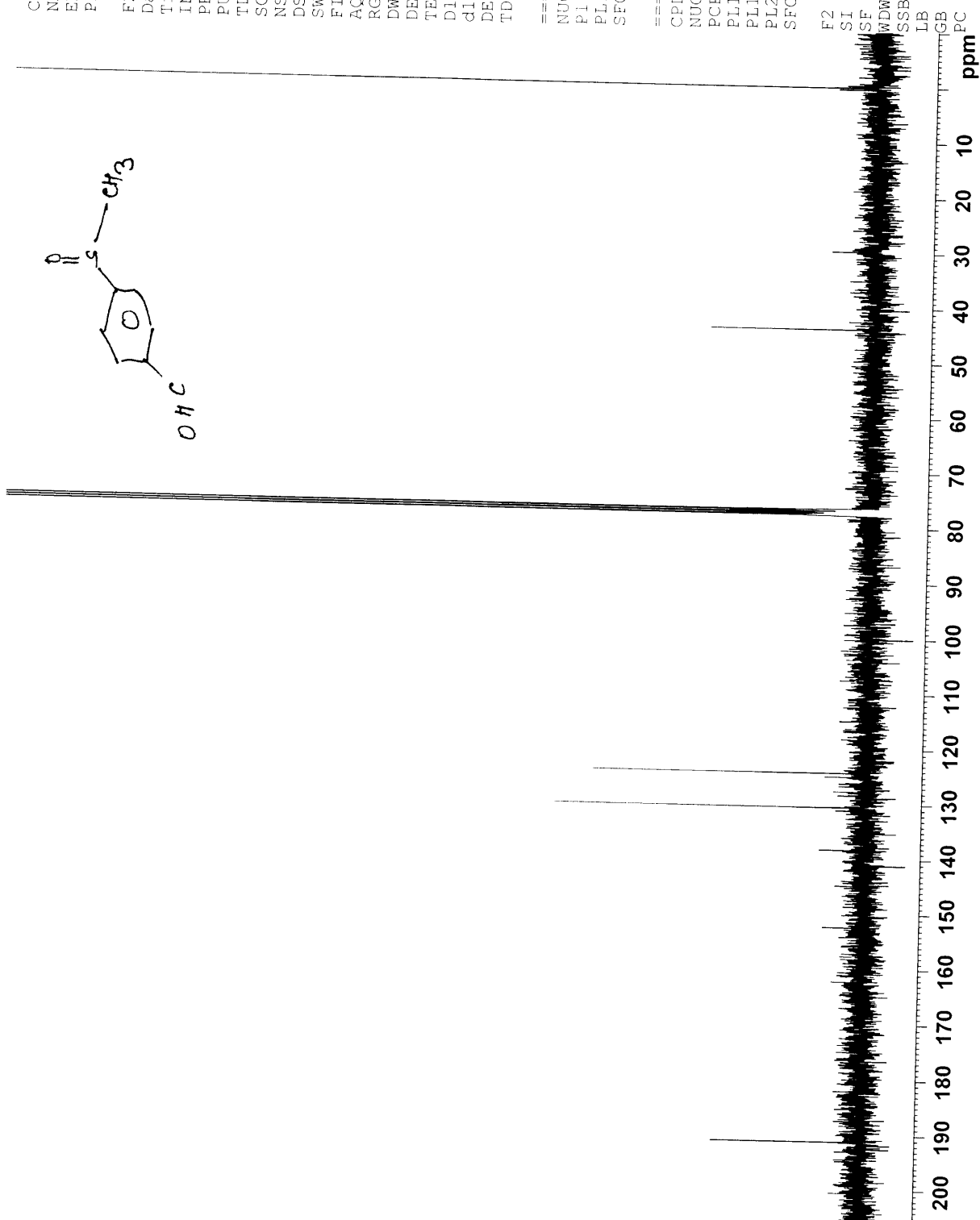
Current Data Parameters
NAME DNP
EXPNO 141
PROCNO 1

F2 - Acquisition Parameters
Date_ 20131027
Time_ 11.58
INSTRUM spect
PROBHD 5 mm BBO BB-1H
PULPROG zgpg30
TD 65536
SOLVENT CDCl3
NS 3500
DS 4
SWH 18028.846 Hz
FIDRES 0.275098 Hz
AQ 1.8175818 sec
RG 32800
DW 27.733 usec
DE 6.00 usec
TE 300.0 K
D1 2.0000000 sec
d11 0.0300000 sec
DELTA 1.89999998 sec
TDO 1

==== CHANNEL f1 =====
NUC1 13C
P1 9.25 usec
PL1 -1.00 dB
SFO1 75.4752953 MHz

==== CHANNEL f2 =====
CPDPRG2 waltz16
NUC2 1H
PCPD2 80.00 usec
PL12 16.94 dB
PL13 16.94 dB
PL2 0.00 dB
SFO2 300.1312005 MHz

F2 - Processing parameters
SI 32768
SF 75.4677490 MHz
WDW EM
SSB 0
LB 1.00 Hz
GB 0
PC 1.40





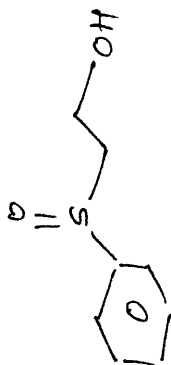
Current Data Parameters
 NAME MAK
 EXPNO 257
 PROCNO 1

F2 - Acquisition Parameters
 Date_ 20110327
 Time 16.07
 INSTRUM spect
 PROBHD 5 mm BBO BB-1H
 PULPROG zg30
 ID 65536
 SOLVENT CDCl3
 NS 16
 DS 2
 SWH 6188.119 Hz
 FIDRES 0.094423 Hz
 AQ 5.2953587 sec
 RG 50.8
 DW 80.800 usec
 DE 6.00 usec
 TE 300.0 K
 D1 1.00000000 sec
 TD0 1

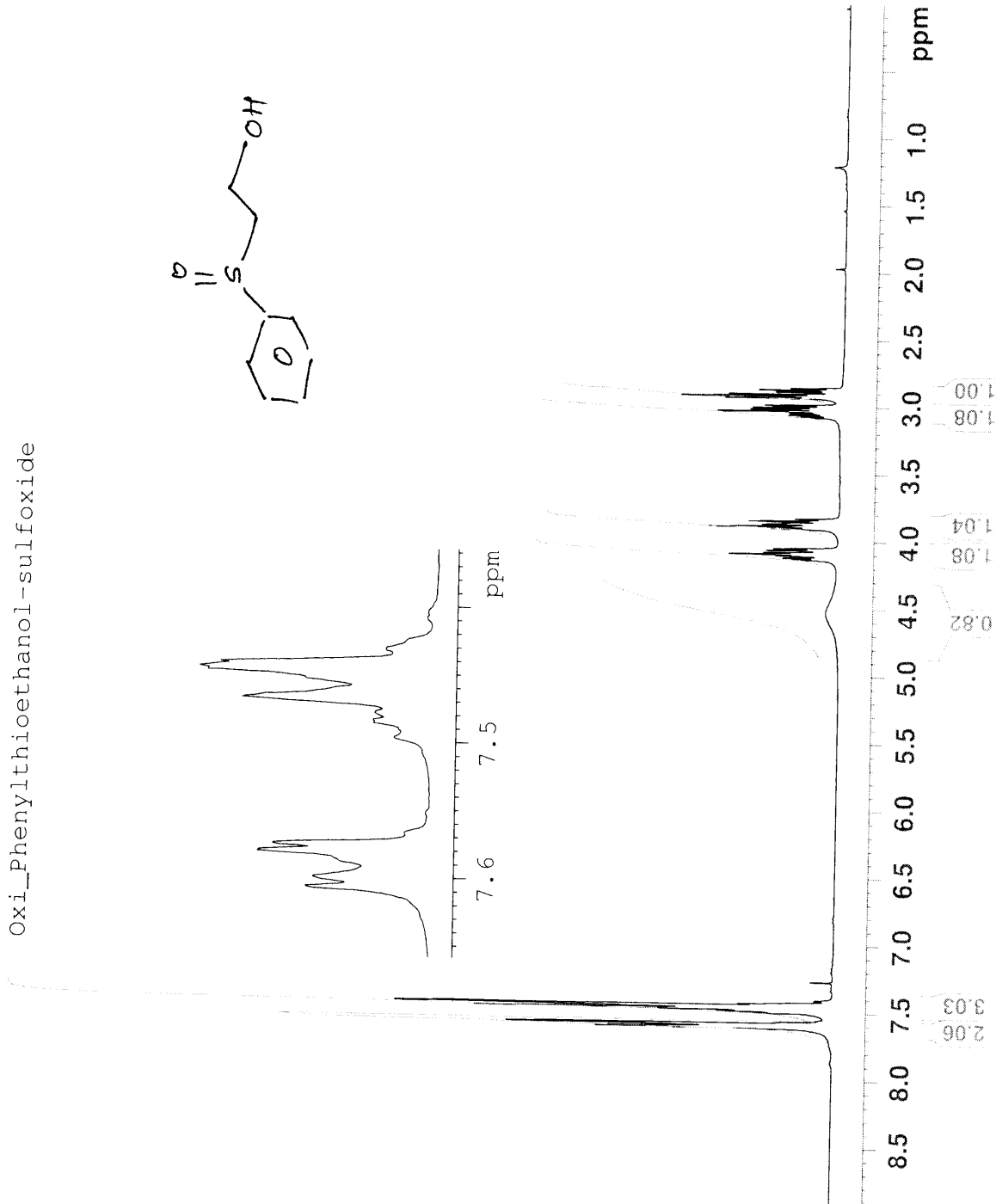
==== CHANNEL f1 =====
 NUC1 1H
 P1 11.00 usec
 PL1 0.00 dB
 SFO1 300.1318534 MHz

F2 - Processing parameters
 SI 32768
 SF 300.1300000 MHz
 WDW EM
 SSB G
 LB 0.30 Hz
 GB 0
 PC 1.00

Oxi_Phenylthioethanol-sulfoxide



7.575
7.567
7.552
7.496
7.486
7.484
7.478
7.468
7.453
7.447
7.446
7.442
7.432
7.431
7.408
7.403
7.268
4.529
4.132
4.120
4.103
4.092
4.080
4.063
4.050
3.903
3.887
3.871
3.865
3.847
3.832
3.076
3.060
3.046
3.031
3.016
3.002
2.986
2.934
2.920
2.918
2.905
2.890
2.876
2.874
2.861





Oxi_Phenylthioethanol

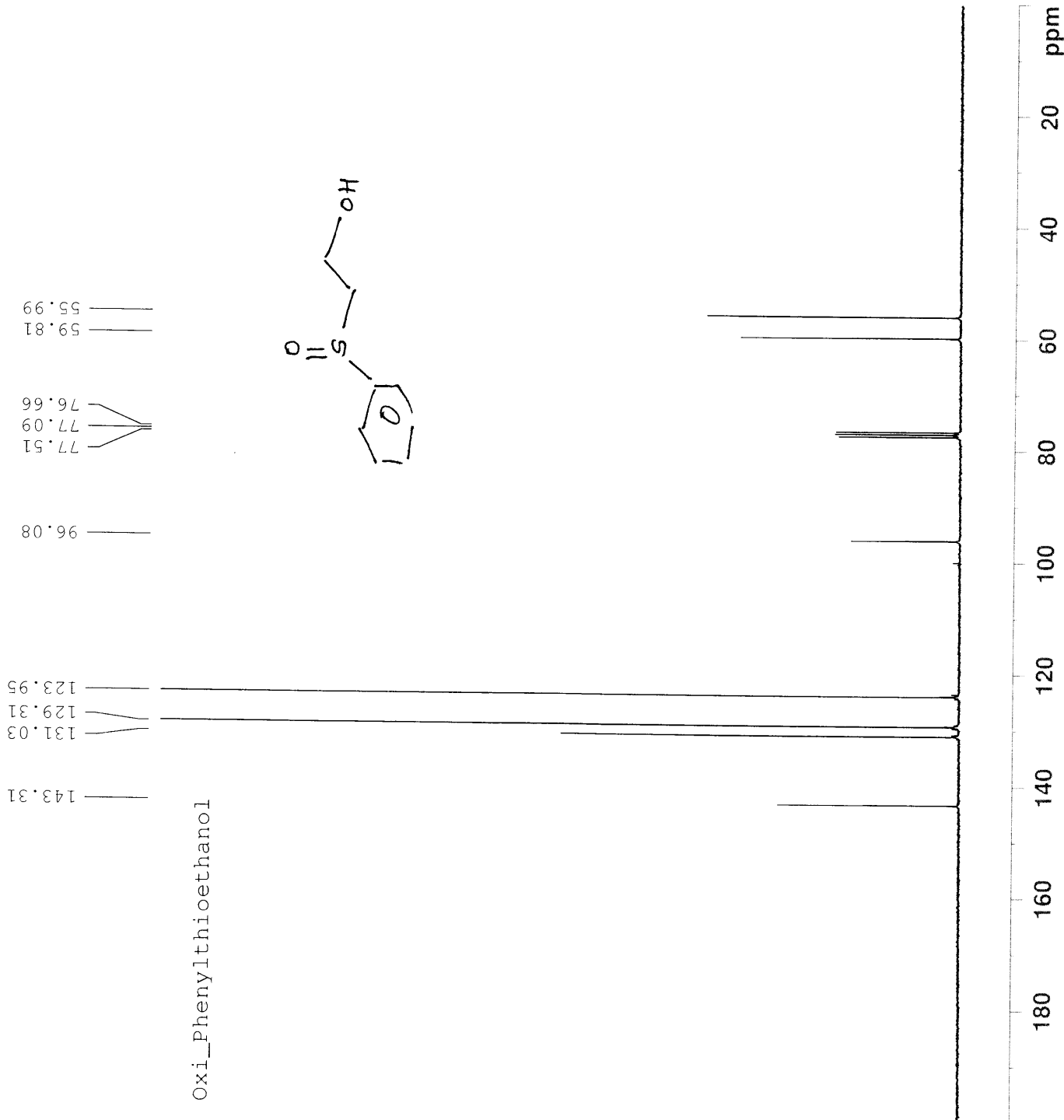
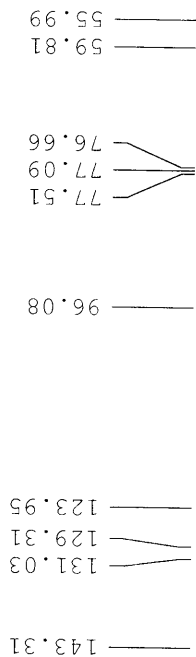
Current Data Parameters
NAME MAK
EXPNO 259
PROCNO 1

F2 - Acquisition Parameters
Date_ 20110327
Time 20.30
INSTRUM spect
PROBHD 5 mm BBO BB-1H
PULPROG zgpg30
TD 65536
SOLVENT CDC13
NS 2500
DS 4
SWH 18028.846 Hz
FIDRES 0.275098 Hz
AQ 1.8175818 sec
RG 32800
DW 27.733 usec
DE 6.00 usec
TE 300.0 K
D1 2.00000000 sec
d11 0.03000000 sec
DELTA 1.89999998 sec
TD0 1

==== CHANNEL f1 =====
NUC1 13C
P1 9.25 usec
PL1 -1.00 dB
SFO1 75.4752953 MHz

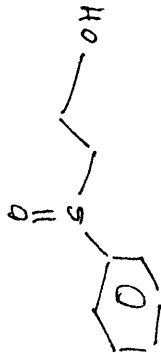
==== CHANNEL f2 =====
CPDPRG2 waltz16
NUC2 1H
PCPD2 80.00 usec
PL12 17.00 dB
PL13 17.00 dB
PL2 0.00 dB
SFO2 300.1312005 MHz

F2 - Processing parameters
SI 32768
SF 75.4677490 MHz
WDW EM
SSB 0
LB 1.00 Hz
GB 0
PC 1.40





Oxi_Phenylthioethanol



Current Data Parameters
NAME MAK
EXPNO 258
PROCNO 1

F2 - Acquisition Parameters
Date_ 20110327
Time 16.11
INSTRUM spect
PROBHD 5 mm BBO BB-1H
PULPROG dept135
TD 65536
SOLVENT CDCl3
NS 1007
DS 8
SWH 18115.941 Hz
FIDRES 0.276427 Hz
AQ 1.8088436 sec
RG 2050
DW 27.600 usec
DE 6.00 usec
TE 300.0 K
CNST2 145.0000000 sec
D1 4.00000000 sec
d12 0.00002000 sec
d2 0.00344828 sec
DELTA 0.00001178 sec
TD0 1

==== CHANNEL f1 =====
NUC1 13C
P1 9.25 usec
P2 18.50 usec
PL1 -1.00 dB
SFO1 75.4745411 MHz

==== CHANNEL f2 =====
CPDPRG2 waltz16
NUC2 1H
P3 11.00 usec
P4 22.00 usec
PCPD2 80.00 usec
PL2 17.00 dB
PL2 0.00 dB
SFO2 300.1315007 MHz

F2 - Processing parameters
SI 32768
SF 75.4677490 MHz
WDW EM
SSB 0
LB 1.00 Hz
GB 0
PC 1.40





Current Data Parameters
 NAME MAK
 EXPNO 276
 PROCNO 1

F2 - Acquisition Parameters
 Date_ 20110407
 Time_ 14.34
 INSTRUM spect
 PROBHD 5 mm BBO BB-1H
 PULPROG zg30
 TD 65536
 SOLVENT CDC13
 NS 16
 DS 2
 SWH 6188.119 Hz
 FIDRES 0.094423 Hz
 AQ 5.2953587 sec
 RG 50.8
 DW 80.800 usec
 DE 6.00 usec
 TE 300.0 K
 D1 1.0000000 sec
 TD0 1

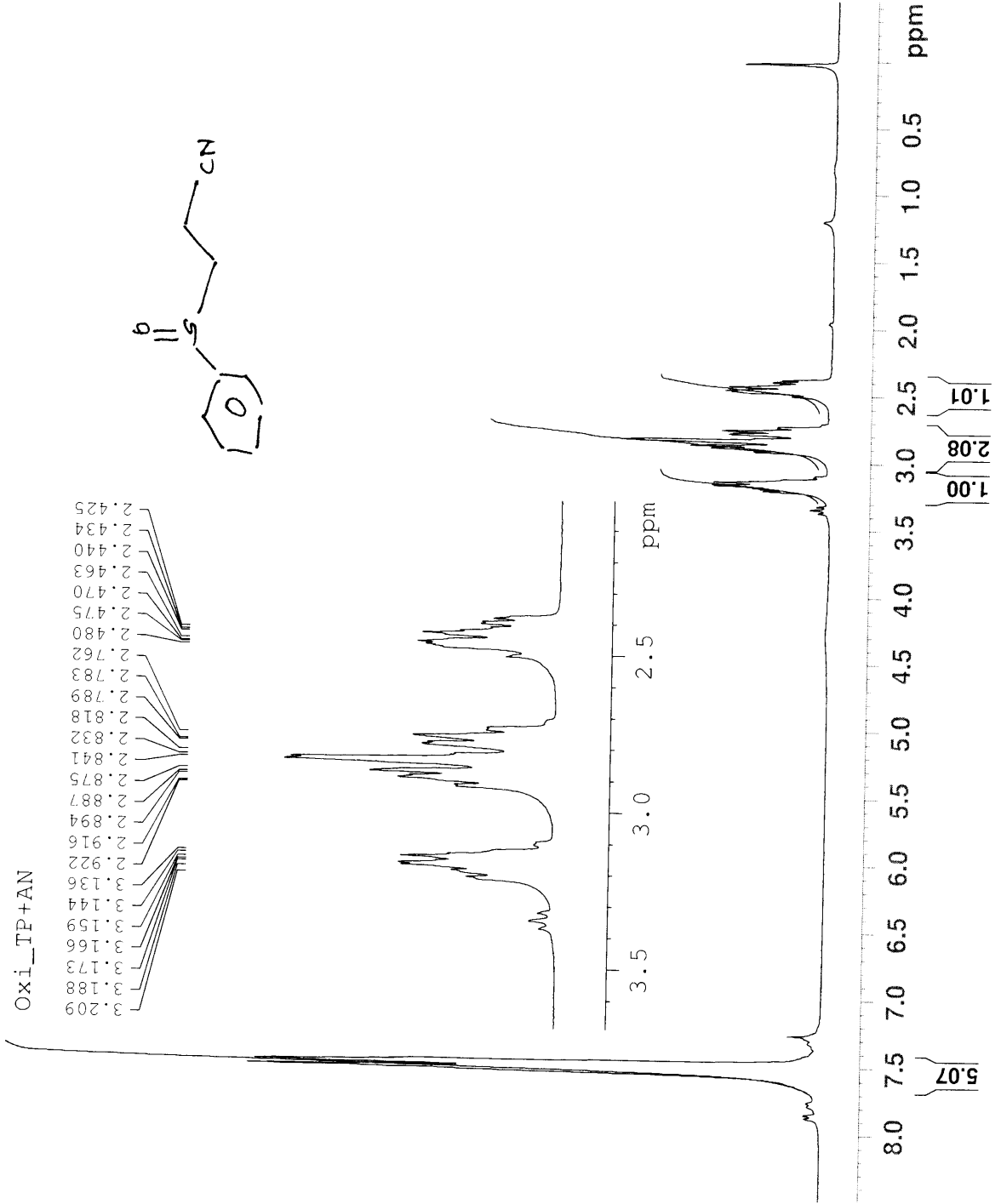
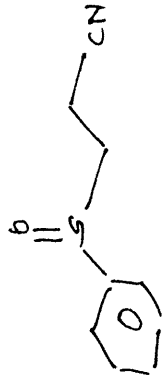
==== CHANNEL f1 =====
 NUC1 1H
 P1 11.00 usec
 PL1 0.00 dB
 SFO1 300.1318534 MHz

F2 - Processing parameters
 SI 32768
 SF 300.1300000 MHz
 WDW EM
 SSB 0
 LB 0.30 Hz
 GB 0
 PC 1.00

7.645
7.527
7.519
7.491
7.476
7.269
3.209
3.188
3.173
3.166
3.159
3.144
3.136
2.922
2.916
2.894
2.887
2.875
2.841
2.832
2.818
2.789
2.783
2.762
2.742
2.733
2.507
2.480
2.475
2.470
2.463
2.440
2.434
2.425
2.413
2.402
2.396
2.385
2.025
0.020

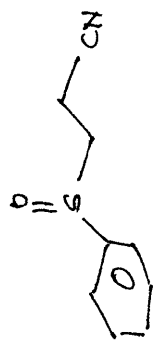
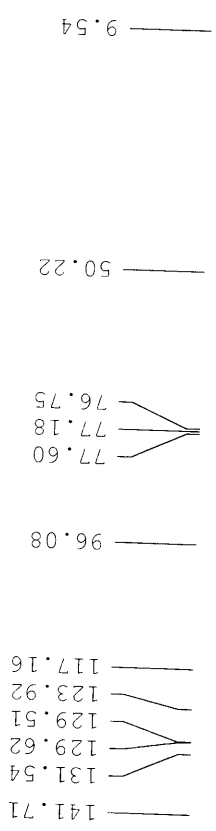
Oxi_TP+AN

3.209
3.188
3.173
3.166
3.159
3.144
3.136
2.922
2.916
2.894
2.887
2.875
2.841
2.832
2.818
2.789
2.783
2.762
2.742
2.733
2.507
2.480
2.475
2.470
2.463
2.440
2.434
2.425





Oxi_TP+AN



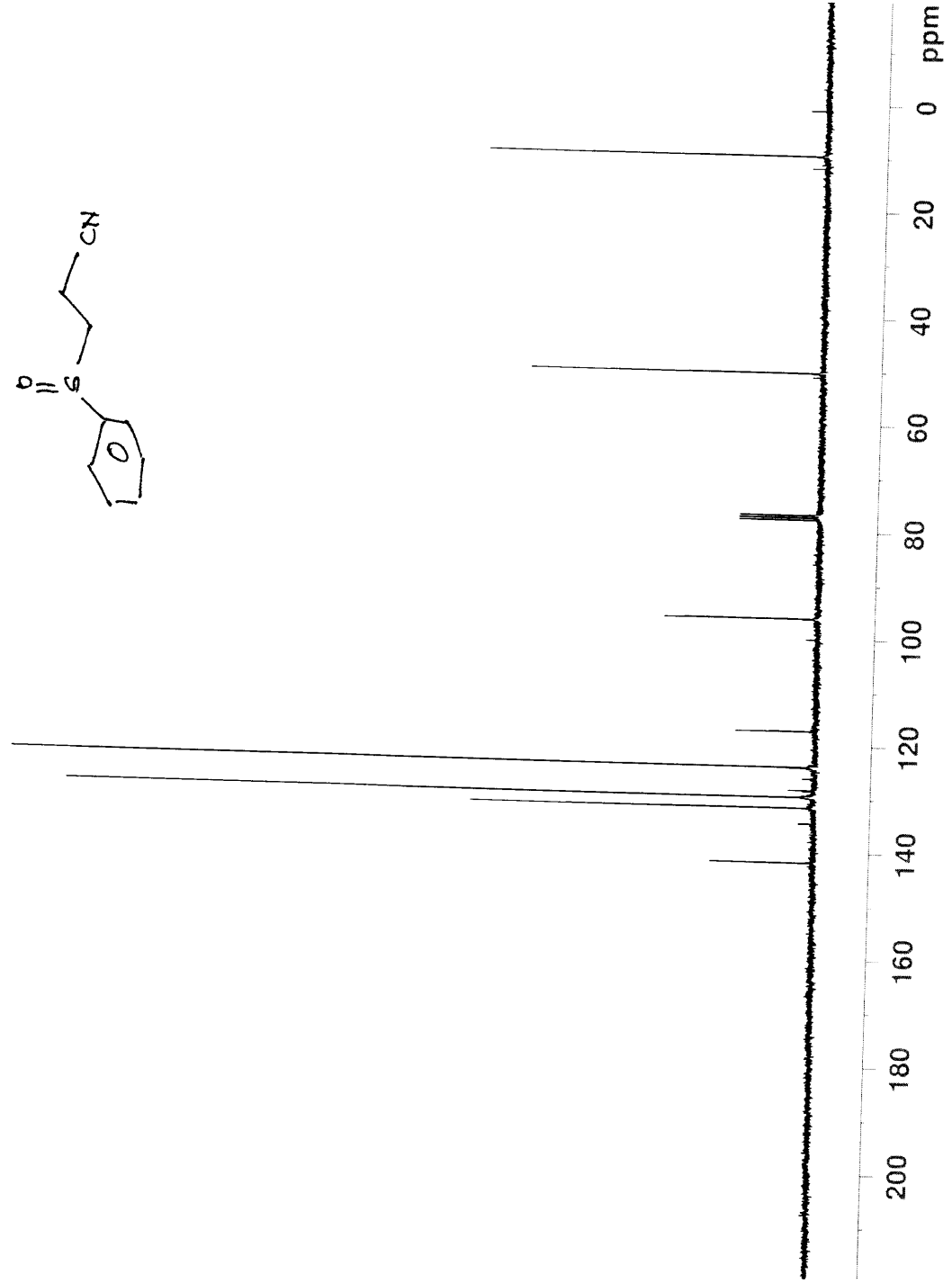
Current Data Parameters
NAME MAK
EXPNO 277
PROCNO 1

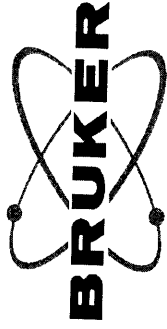
F2 - Acquisition Parameters
Date_ 20110407
Time 15.03
INSTRUM spect
PROBHD 5 mm BBO BB-1H
PULPROG zgpg30
TD 65536
SOLVENT CDC13
NS 1757
DS 4
SWH 18028.846 Hz
FIDRES 0.275098 Hz
AQ 1.8175818 sec
RG 32800
DW 27.733 usec
DE 6.00 usec
TE 300.0 K
D1 2.0000000 sec
d11 0.0300000 sec
DELTA 1.8999998 sec
TD0 1

==== CHANNEL f1 =====
NUC1 13C
P1 9.25 usec
PL1 -1.00 dB
SFO1 75.4752953 MHz

==== CHANNEL f2 =====
CPDPRG2 waltz16
NUC2 1H
PCPD2 80.00 usec
PL12 17.00 dB
PL13 17.00 dB
PL2 0.00 dB
SFO2 300.1312005 MHz

F2 - Processing parameters
SI 32768
SF 75.4677490 MHz
WDW EM
SSB 0
LB 1.00 Hz
GB 0
PC 1.40



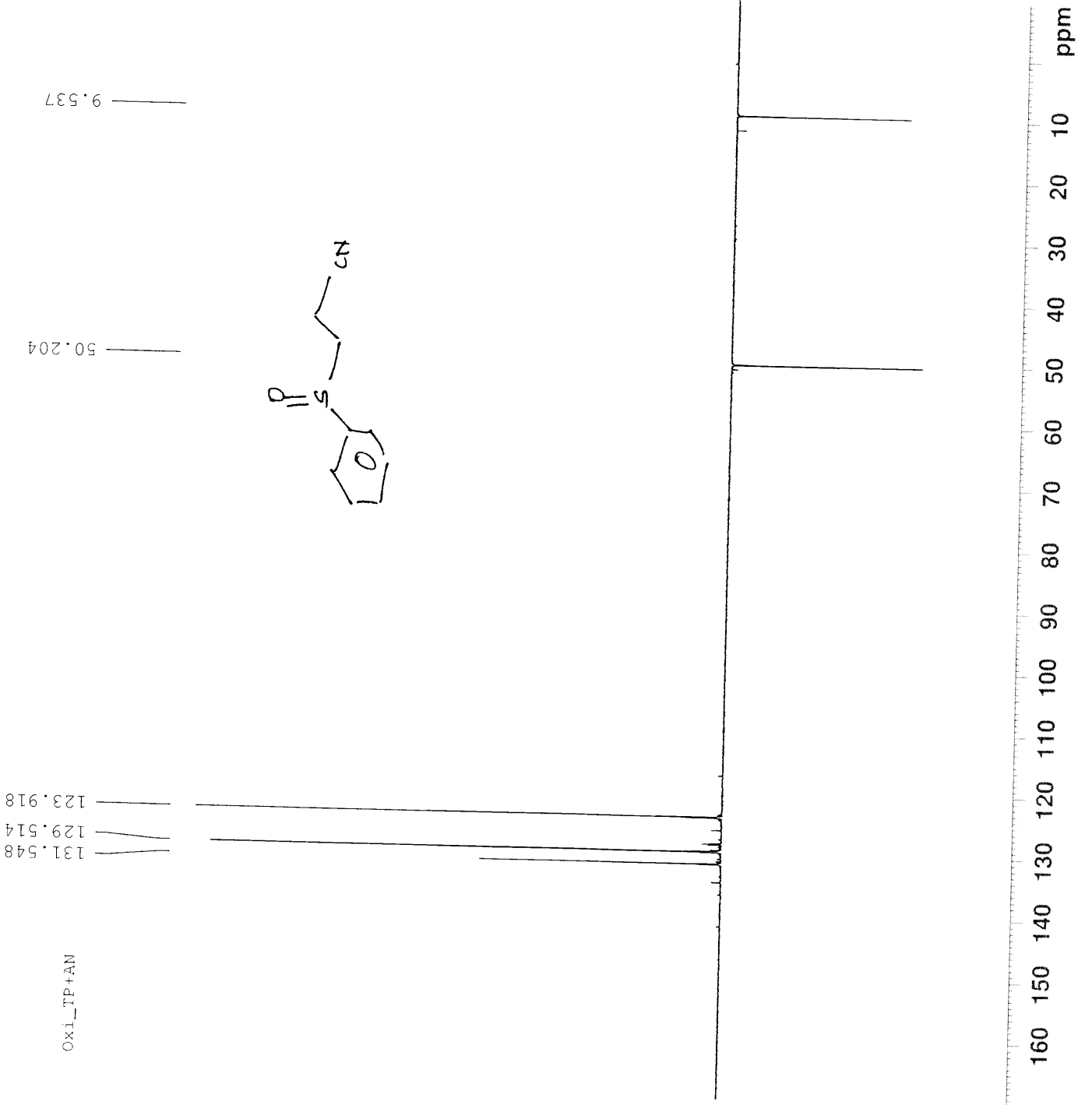


Current Data Parameters
NAME: MAM
EXPNO: 278
PROCNO: 1

F2 - Acquisition Parameters
Date_: 20110407
Time: 18.16
INSTRUM: spect
PROBHD: 5 mm BBO BB-1H
PULPROG: dept135
TD: 65536
SOLVENT: CDCl3
NS: 1125
DS: 8
SWH: 18115.941 Hz
FIDRES: 0.276427 Hz
AQ: 1.8088436 sec
RG: 2050
DW: 27.600 usec
DE: 6.00 usec
TE: 300.0 K
CNST2: 145.0000000
d1: 4.0000000 sec
d12: 0.0000200 sec
d2: 0.0034828 sec
DELTA: 0.00001178 sec
TD0: 1

==== CHANNEL f1 =====
NUC1: 13C
P1: 9.25 usec
PL1: 18.50 usec
SFO1: -1.00 dB
75.4745411 MHz
==== CHANNEL f2 =====
CPDPRG2: waitz16
NDC2: 1H
P3: 11.00 usec
P4: 22.00 usec
PCPD2: 80.00 usec
PL12: 17.00 dB
PL2: 0.00 dB
SFO2: 300.1315007 MHz

F2 - Processing parameters
SI: 32768
SF: 75.4677490 MHz
WDW: EM
SSB: 0
LB: 1.00 Hz
GB: 0
PC: 1.40





Current Data Parameters
 NAME MAK
 EXPNO 273
 PROCNO 1

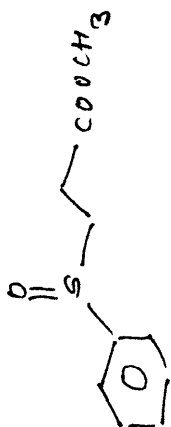
F2 - Acquisition Parameters
 Date_ 20110406
 Time 21.53
 INSTRUM spect
 PROBHD 5 mm BBO BB-1H
 PULPROG zg30
 TD 65536
 SOLVENT CDC13
 NS 16
 DS 2
 SWH 6188.119 Hz
 FIDRES 0.094423 Hz
 AQ 5.2953587 sec
 RG 50.8
 DW 80.800 usec
 DE 6.00 usec
 TE 300.0 K
 D1 1.00000000 sec
 TD0 1

==== CHANNEL f1 =====
 NUC1 1H
 P1 11.00 usec
 PL1 0.00 dB
 SFO1 300.1318534 MHz

F2 - Processing parameters
 SI 32768
 SF 300.1300000 MHz
 WDW EM
 SSB 0
 LB 0.30 Hz
 GB 0
 PC 1.00

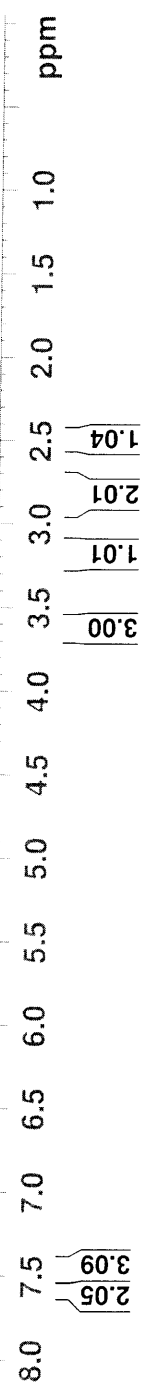
0.025

7.556
7.550
7.545
7.536
7.506
7.502
7.495
7.488
7.477
7.463
7.456
7.453
7.438
7.434
3.600
3.223
3.201
3.194
3.179
3.173
3.156
3.151
3.130
2.932
2.913
2.905
2.886
2.870
2.860
2.843
2.828
2.807
2.779
2.772
2.750
2.746
2.723
2.529
2.511
2.503
2.483
2.474
2.456
2.446
2.427



3.201
3.194
3.179
3.173
3.156
3.151
3.130
2.828
2.843
2.860
2.886
2.905
2.913
2.932
2.746
2.750
2.772
2.779
2.750
2.772
2.483
2.503
2.511

3.2 3.0 2.8 2.6 ppm





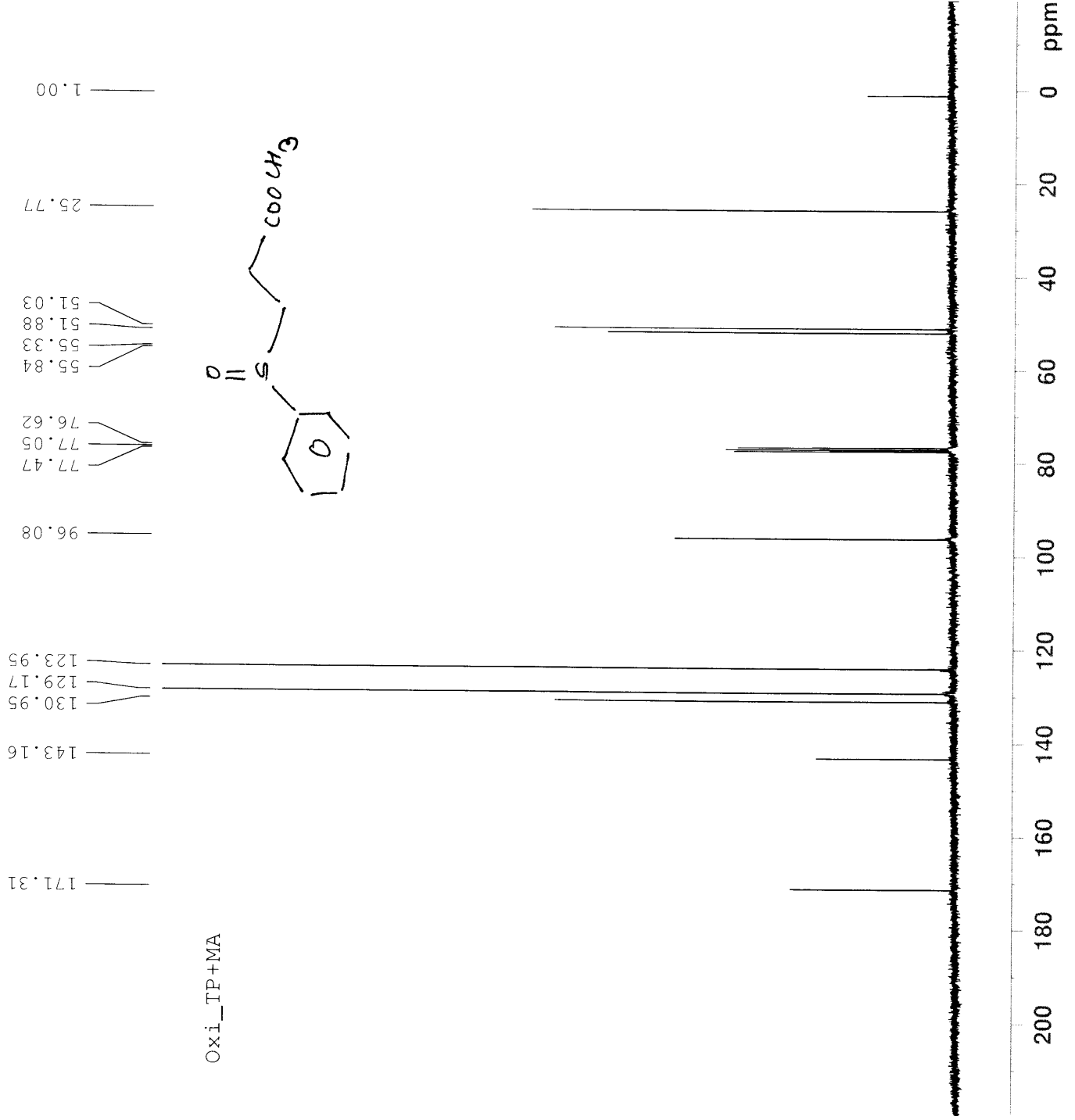
Current Data Parameters
NAME MAK
EXPNO 275
PROCNO 1

F2 - Acquisition Parameters
Date_ 20110406
Time 23.10
INSTRUM spect
PROBHD 5 mm BBO BB-1H
PULPROG zgpg30
TD 65536
SOLVENT CDCl3
NS 502
DS 4
SWH 18028.846 Hz
FIDRES 0.275098 Hz
AQ 1.8175818 sec
RG 32800
DW 27.733 usec
DE 6.00 usec
TE 300.0 K
D1 2.00000000 sec
d11 0.03000000 sec
DELTA 1.89999998 sec
TD0 1

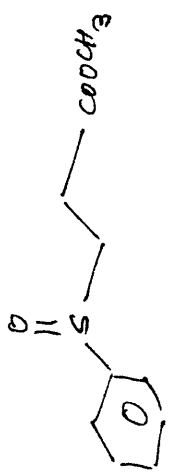
==== CHANNEL f1 =====
NUC1 13C
P1 9.25 usec
PL1 -1.00 dB
SFO1 75.4752953 MHz

==== CHANNEL f2 =====
CPDPRG2 waltz16
NUC2 1H
PGPD2 80.00 usec
PL12 17.00 dB
PL13 17.00 dB
PL2 0.00 dB
SFO2 300.1312005 MHz

F2 - Processing parameters
SI 32768
SF 75.4677490 MHz
WDW EM
SSB 0
LB 1.00 Hz
GB 0
PC 1.40



Oxi_TP+MA



Current Data Parameters
NAME MAK
EXPNO 274
PROCNO 1

F2 - Acquisition Parameters
Date_ 20110406
Time 22.03
INSTRUM spect
PROBHD 5 mm BBO BB-1H
PULPROG dept135
TD 65536
SOLVENT CDC13
NS 740
DS 8
SWH 18115.941 Hz
FIDRES 0.276427 Hz
AQ 1.8088436 sec
RG 2050
DW 27.600 usec
DE 6.00 usec
TE 300.0 K
CNS12 145.0000000
D1 4.0000000 sec
d12 0.00002000 sec
d2 0.00344828 sec
DELTA 0.00001178 sec
TD0 1

==== CHANNEL f1 =====
NUC1 13C
P1 9.25 usec
P2 18.50 usec
PL1 -1.00 dB
SFO1 75.4745411 MHz

==== CHANNEL f2 =====
CPDPRG2 waitz16
NUC2 1H
P3 11.00 usec
P4 22.00 usec
PCPD2 80.00 usec
PL2 17.00 dB
PL2 0.00 dB
SFO2 300.1315007 MHz

F2 - Processing parameters
SI 32768
SF 75.4677490 MHz
WDW EM
SSB 0
LB 1.00 Hz
GB 0
PC 1.40



OXI-TP+MKV 0.2KBR

1.229
1.201
2.139
2.158
2.605
2.619
2.629
2.646
2.662
2.676
2.690
2.707
2.824
2.841
2.850
2.868
2.882
2.895
2.908
2.924
2.942
2.951
2.968
2.981
3.003
3.029
3.161
3.182
3.192
3.205
3.209
3.226
3.232
3.250
3.268
7.268
7.477
7.487
7.493
7.501
7.506
7.512
7.512
7.523
7.529
7.537
7.541
7.551
7.564
7.572
7.578
7.585
7.586
7.597
7.605

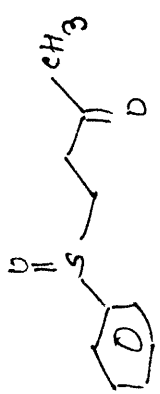
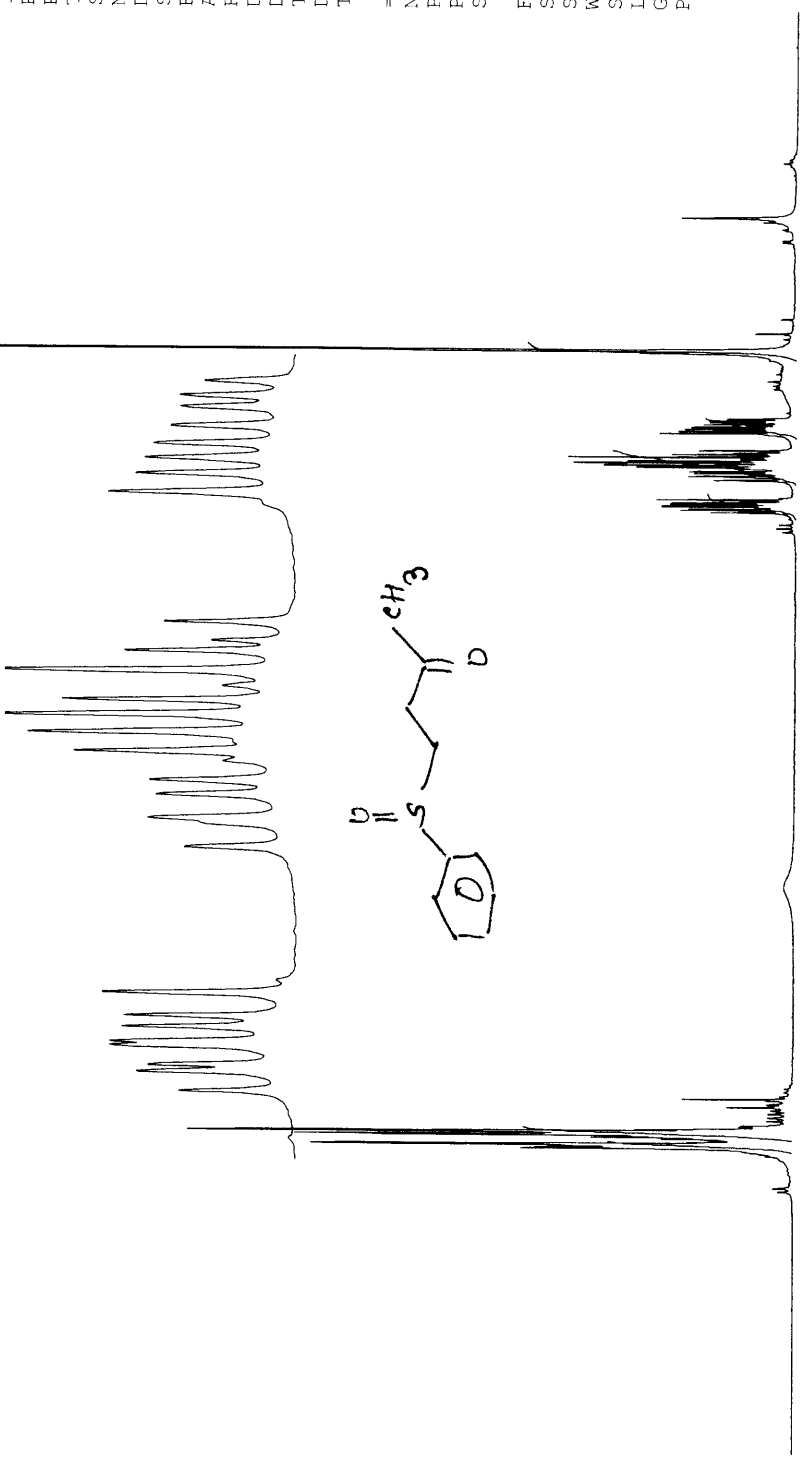
Current Data Parameters
NAME MAK
EXPNO 154
PROCNO 1

F2 - Acquisition Parameters
Date_ 20100714
Time 13.27
INSTRUM spect
PROBHD 5 mm BBO BB-1H
PULPROG zg30
TD 65536
SOLVENT CDCl3
NS 16
DS 2
SWH 6188.119 Hz
FIDRES 0.094423 Hz
AQ 5.2953587 sec
RG 64
DW 80.800 usec
DE 6.00 usec
TE 300.0 K
D1 1.00000000 sec
TD0 1

==== CHANNEL f1 =====
NUC1 1H
P1 11.00 usec
PL1 0.00 dB
SFO1 300.1318534 MHz

F2 - Processing parameters
SI 32768
SF 300.1300000 MHz
WDW EM
SSB 0
LB 0.30 Hz
GB 0
PC 1.00

2.619
2.629
2.646
2.662
2.676
2.690
2.707
2.924
2.942
2.951
2.968
2.981
3.003
3.029
3.161
3.182
3.192
3.205
3.209
3.226
3.232
3.250
3.268
7.268
7.477
7.487
7.493
7.501
7.506
7.512
7.512
7.523
7.529
7.537
7.541
7.551
7.564
7.572
7.578
7.585
7.586
7.597
7.605



9.5 9.0 8.5 8.0 7.5 7.0 6.5 6.0 5.5 5.0 4.5 4.0 3.5 3.0 2.5 2.0 1.5 1.0 ppm

3.03
1.03
2.07
1.00
3.04
2.09



OXI-TP+MVK 0.2KBR

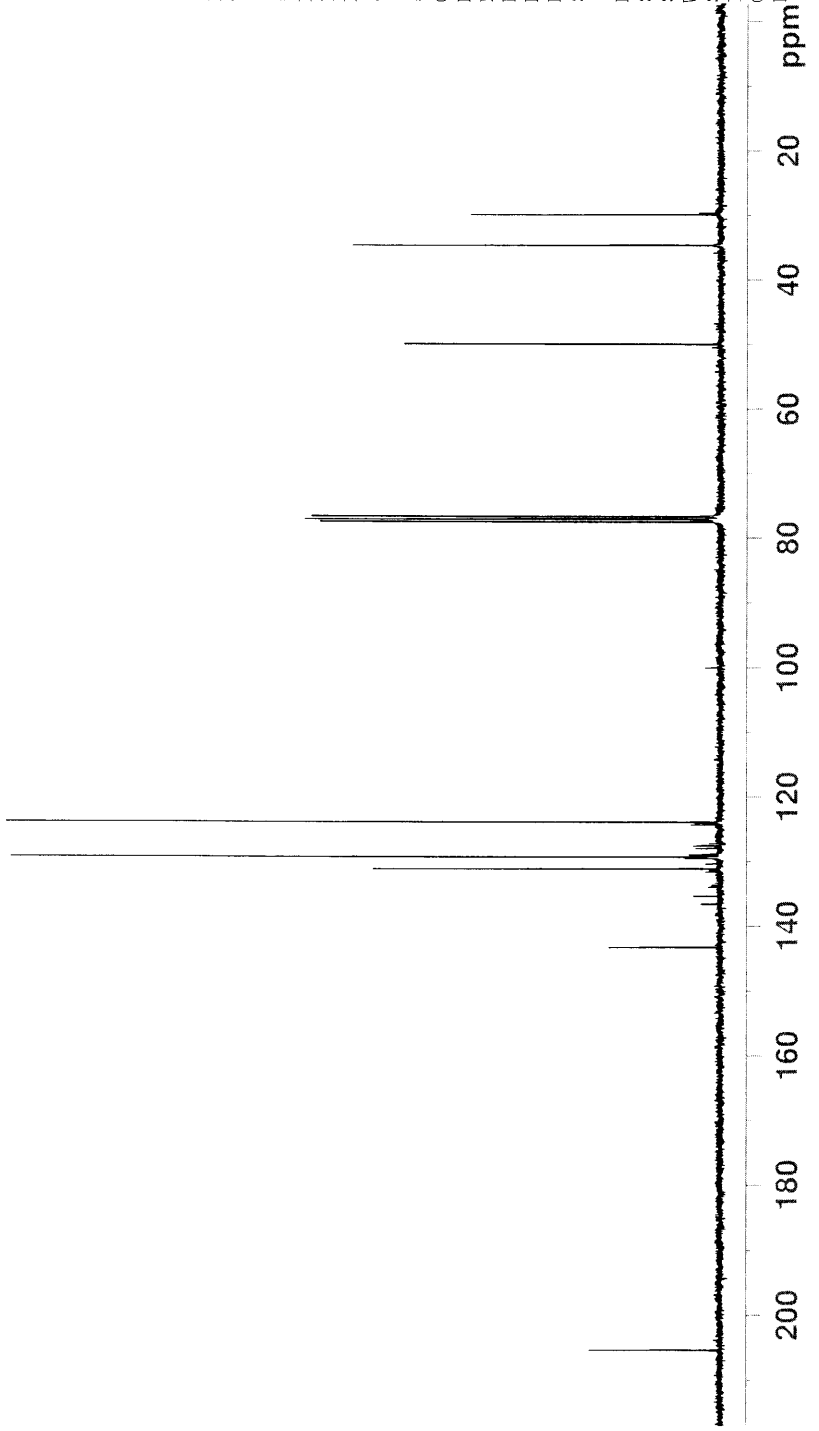
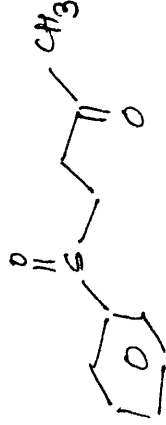
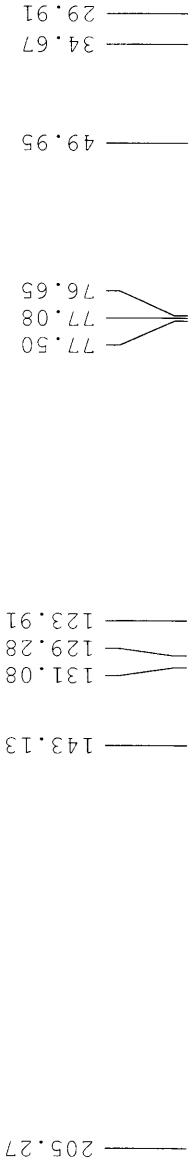
Current Data Parameters
NAME MAK
EXPNO 155
PROCNO 1

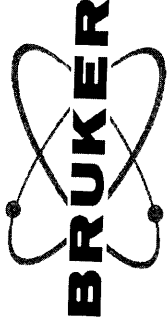
F2 - Acquisition Parameters
Date_ 20100714
Time 14.35
INSTRUM spect
PROBHD 5 mm BBO BB-1H
PULPROG zgpg30
TD 65536
SOLVENT CDC13
NS 1024
DS 4
SWH 18028.846 Hz
FIDRES 0.275098 Hz
AQ 1.8175818 sec
RG 32800
DW 27.733 usec
DE 6.00 usec
TE 300.0 K
D1 2.00000000 sec
d11 0.03000000 sec
DELTA 1.89999998 sec
TD0 1

==== CHANNEL f1 =====
NUC1 13C
P1 9.25 usec
PL1 -1.00 dB
SFO1 75.4752953 MHz

==== CHANNEL f2 =====
CPDPRG2 waltz16
NUC2 1H
PCPD2 80.00 usec
PL12 17.00 dB
PL13 17.00 dB
PL2 0.00 dB
SFO2 300.1312005 MHz

F2 - Processing parameters
SI 32768
SF 75.4677490 MHz
WDW EM
SSB 0
LB 1.00 Hz
GB 0
PC 1.40





Current Data Parameters
NAME MAK
EXPNO 156
PROCNO 1

F2 - Acquisition Parameters
Date_ 20100714
Time 15.44
INSTRUM spect
PROBHD 5 mm BBO BB-IH
PULPROG dept135
TD 65536
SOLVENT CDC13
NS 1644
DS 8
SWH 18115.941 Hz
FIDRES 0.276427 Hz
AQ 1.8088436 sec
RG 2050
DW 27.600 usec
DE 6.00 usec
TE 300.0 K
CNST2 145.0000000
d1 4.0000000 sec
d12 0.0002000 sec
d2 0.00344828 sec
DELTA 0.00001178 sec
TD0 1

==== CHANNEL f1 =====
NUC1 13C
P1 9.25 usec
P2 18.50 usec
PL1 -1.00 dB
SFO1 75.4745411 MHz

==== CHANNEL f2 =====
CPDPRG2 waltz16
NUC2 1H
P3 11.00 usec
P4 22.00 usec
PCPD2 80.00 usec
PL12 17.00 dB
PL2 0.00 dB
SFO2 300.1315007 MHz

F2 - Processing parameters
SI 32768
SF 75.4677490 MHz
WDW EM
SSB 0
LB 1.00 Hz
GB 0
PC 1.40





Current Data Parameters
 NAME DNP
 EXPNO 149
 PROCNO 1

F2 - Acquisition Parameters
 Date_ 20131112
 Time_ 13.27
 INSTRUM spect
 PROBHD 5 mm BBO BB-1H
 PULPROG zg30
 TD 65536
 SOLVENT CDCl3
 NS 16
 DS 2
 SWH 6188.119 Hz
 FIDRES 0.094423 Hz
 AQ 5.2953587 sec
 RG 16
 DW 80.800 usec
 DE 6.00 usec
 TE 300.0 K
 D1 1.00000000 sec
 TD0 1

==== CHANNEL f1 =====
 NUC1 1H
 P1 11.38 usec
 PL1 0.00 dB
 SFO1 300.1318534 MHz

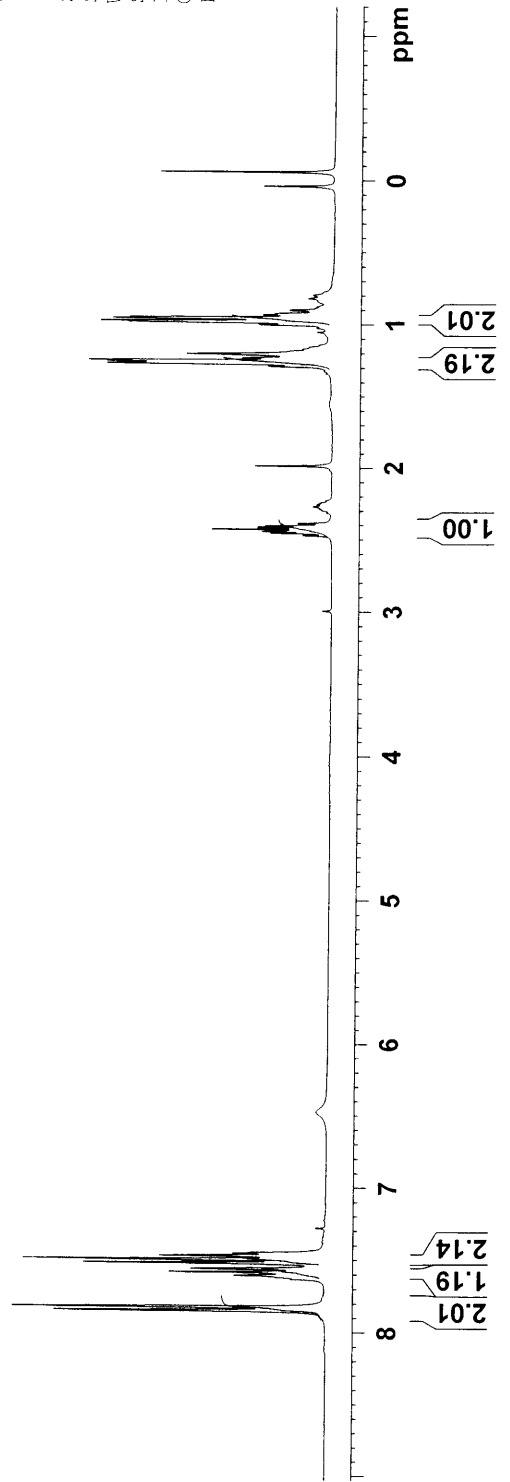
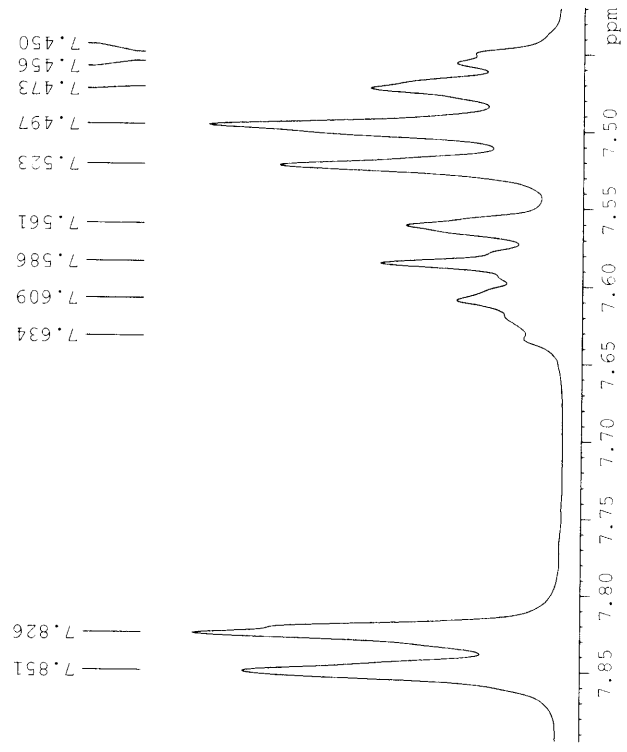
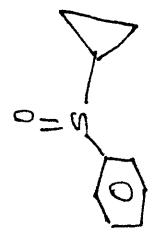
F2 - Processing parameters
 SI 32768
 SF 300.1300000 MHz
 WDW EM
 SSB 0
 LB 0.30 Hz
 GB 0
 PC 1.00

2.473
2.457
2.447
2.431
2.415
2.405
2.388
1.987
1.291
1.275
1.267
1.259
1.252
1.236
1.207
1.002
0.987
0.980
0.961
0.954
0.935
0.926
0.901

7.634
7.609
7.586
7.561
7.523
7.497
7.473
7.456
7.450

7.851
7.826
7.634
7.609
7.586
7.561
7.523
7.497
7.473
7.456
7.450

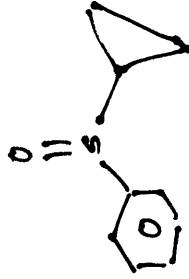
MAM-Cyclo propanyl



MAM-Cyclo Propanyl

140.63
133.88
131.17
129.23
127.43
124.14

32.82
5.91



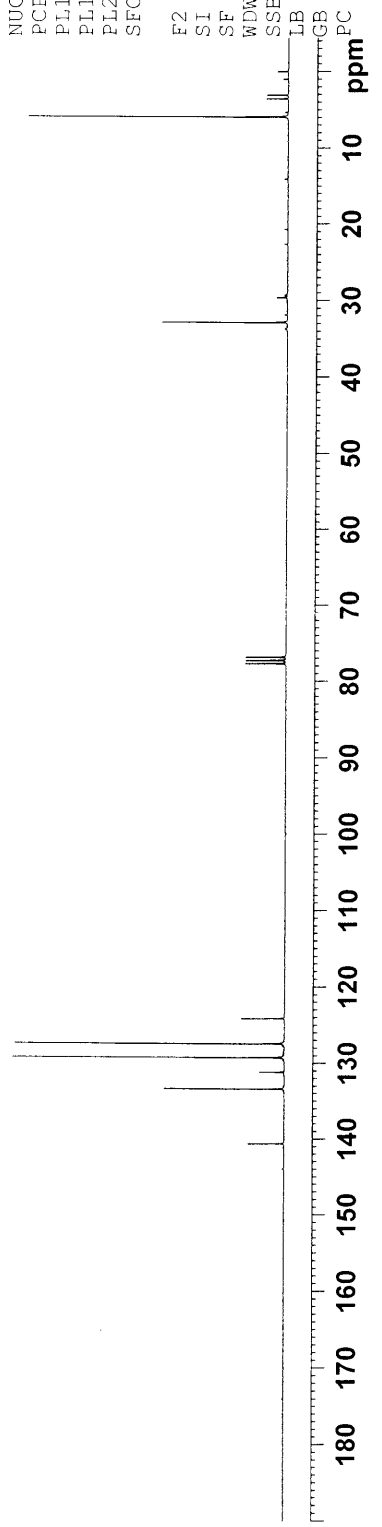
Current Data Parameters
NAME DNP
EXPNO 150
PROCNO 1

F2 - Acquisition Parameters
Date_ 20131112
Time 14.51
INSTRUM spect
PROBHD 5 mm BBO BB-1H
PULPROG zgpg30
TD 65536
SOLVENT CDCl3
NS 1158
DS 4
SWH 18028.846 Hz
FIDRES 0.275098 Hz
AQ 1.8175818 sec
RG 32800
DW 27.733 usec
DE 6.00 usec
TE 300.0 K
D1 2.0000000 sec
d11 0.0300000 sec
DELTA 1.89999998 sec
TD0 1

==== CHANNEL f1 =====
NUC1 13C
P1 9.25 usec
PL1 -1.00 dB
SFO1 75.4752953 MHz

==== CHANNEL f2 =====
CPDPRG2 waltz16
NUC2 1H
PCPD2 80.00 usec
PL12 16.94 dB
PL13 16.94 dB
PL2 0.00 dB
SFO2 300.1312005 MHz

F2 - Processing parameters
SI 32768
SF 75.4677490 MHz
WDW EM
SSB 0
LB 1.00 Hz
GB 0
PC 1.40





Current Data Parameters
NAME DNP
EXPNO 151
PROCNO 1

F2 - Acquisition Parameters
Date_ 20131112
Time 20.35
INSTRUM spect
PROBHD 5 mm BBO BB-1H
PULPROG dept135
TD 65536
SOLVENT CDCl3
NS 3500
DS 8
SWH 18115.941 Hz
FIDRES 0.276427 Hz
AQ 1.8088436 sec
RG 2050
DW 27.600 usec
DE 6.00 usec
TE 300.0 K
CNST2 145.0000000
D1 4.00000000 sec
d12 0.0002000 sec
d2 0.00344828 sec
DELTA 0.00001178 sec
TDO 1

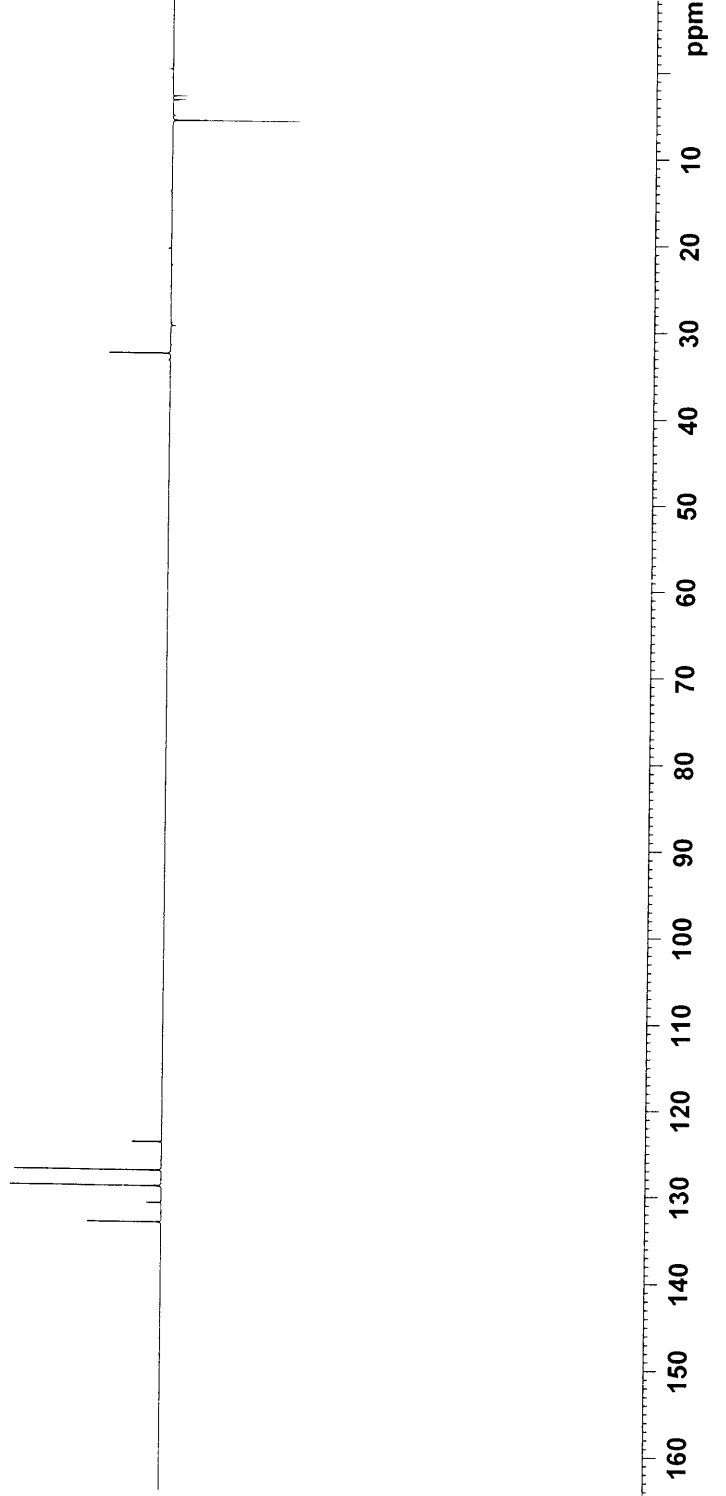
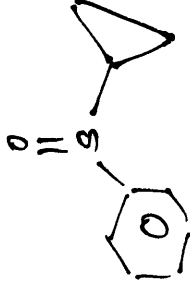
==== CHANNEL f1 =====
NUC1 13C
P1 9.25 usec
P2 18.50 usec
PL1 -1.00 dB
SFO1 75.4745411 MHz

==== CHANNEL f2 =====
CPDPRG2 waltz16
NUC2 1H
P3 11.38 usec
P4 22.76 usec
PCPD2 80.00 usec
PL12 16.94 dB
PL2 0.00 dB
SFO2 300.1315007 MHz

F2 - Processing parameters
SI 32768
SF 75.4677490 MHz
WDW EM
SSB 0
LB 1.00 Hz
GB 0
PC 1.40



MAM-Cyclo Propanyl





Current Data Parameters
NAME NAK
EXPNO 279
PROCNO 1

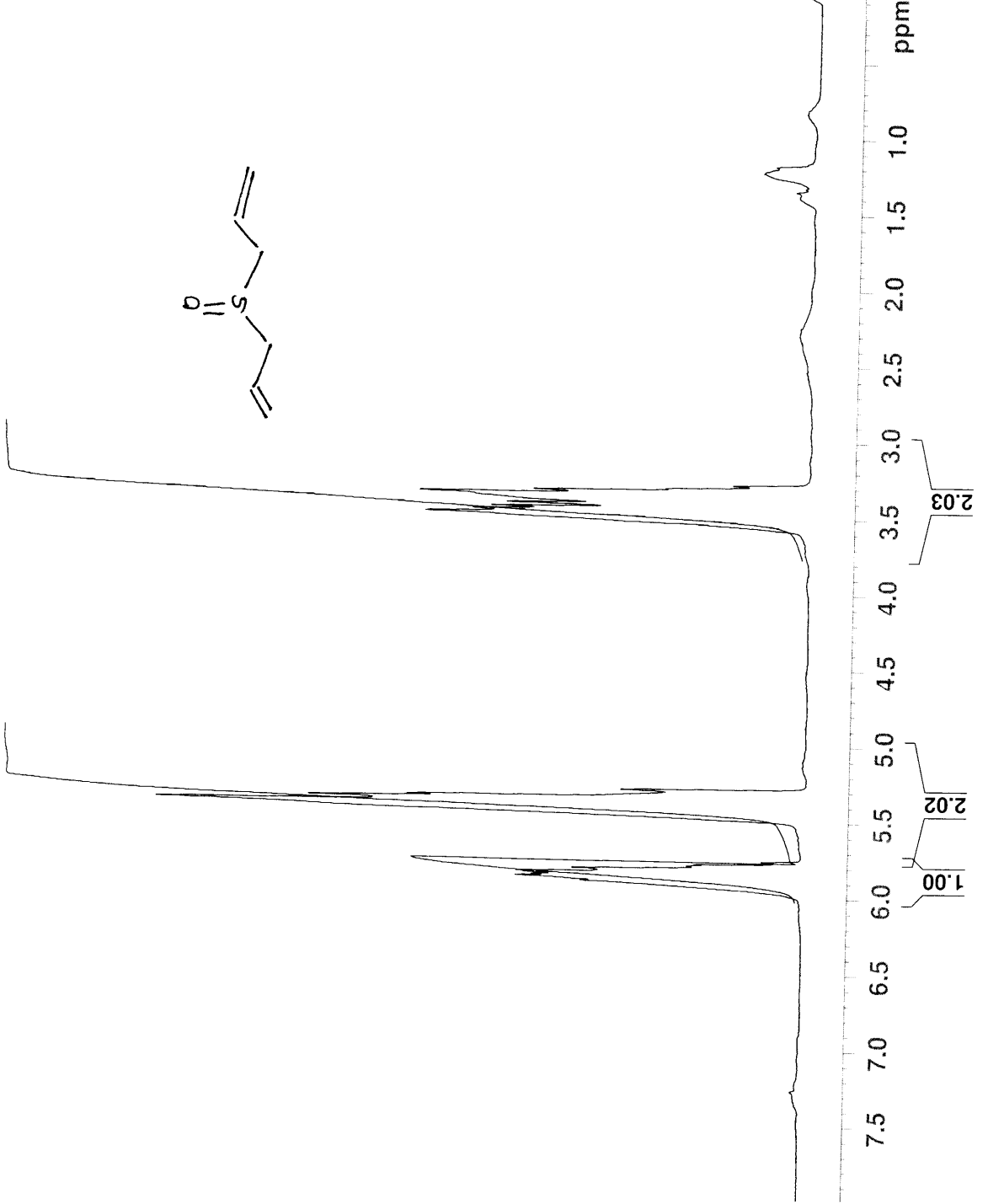
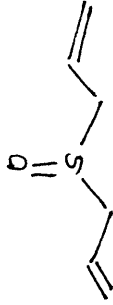
F2 - Acquisition Parameters
Date_ 20110409
Time 22.01
INSTRUM spect
PROBHD 5 mm BBO BB-1H
PULPROG zg30
TD 65536
SOLVENT CDCl3
NS 16
DS 2
SWH 6188.119 Hz
FIDRES 0.094423 Hz
AQ 5.2953587 sec
RG 57
DW 80.800 usec
DE 6.00 usec
TE 300.0 K
D1 1.00000000 sec
TD0 1

==== CHANNEL f1 =====
NUC1 1H
P1 11.00 usec
PL1 0.00 dB
SFO1 300.1318534 MHz

F2 - Processing parameters
SI 32768
SF 300.1300000 MHz
WDW EM
SSB 0
LB 0.30 Hz
GB 0
PC 1.00

5.896
5.873
5.864
5.847
5.840
5.816
5.792
5.783
5.401
5.381
5.367
5.352
5.295
3.487
3.464
3.444
3.419
3.356
3.331
3.314
3.288

Diallyl Sulfoxide





Current Data Parameters
NAME MAK
EXPNO 279
PROCNO 1

F2 - Acquisition Parameters
Date_ 20110409
Time 22.01
INSTRUM spect
PROBHD 5 mm BBO BB-1H
PULPROG zg30
TD 65536
SOLVENT CDC13
NS 16
DS 2
SWH 6188.119 Hz
FIDRES 0.094423 Hz
AQ 5.2953587 sec
RG 57
DW 80.800 usec
DE 6.00 usec
TE 300.0 K
D1 1.00000000 sec
TD0 1

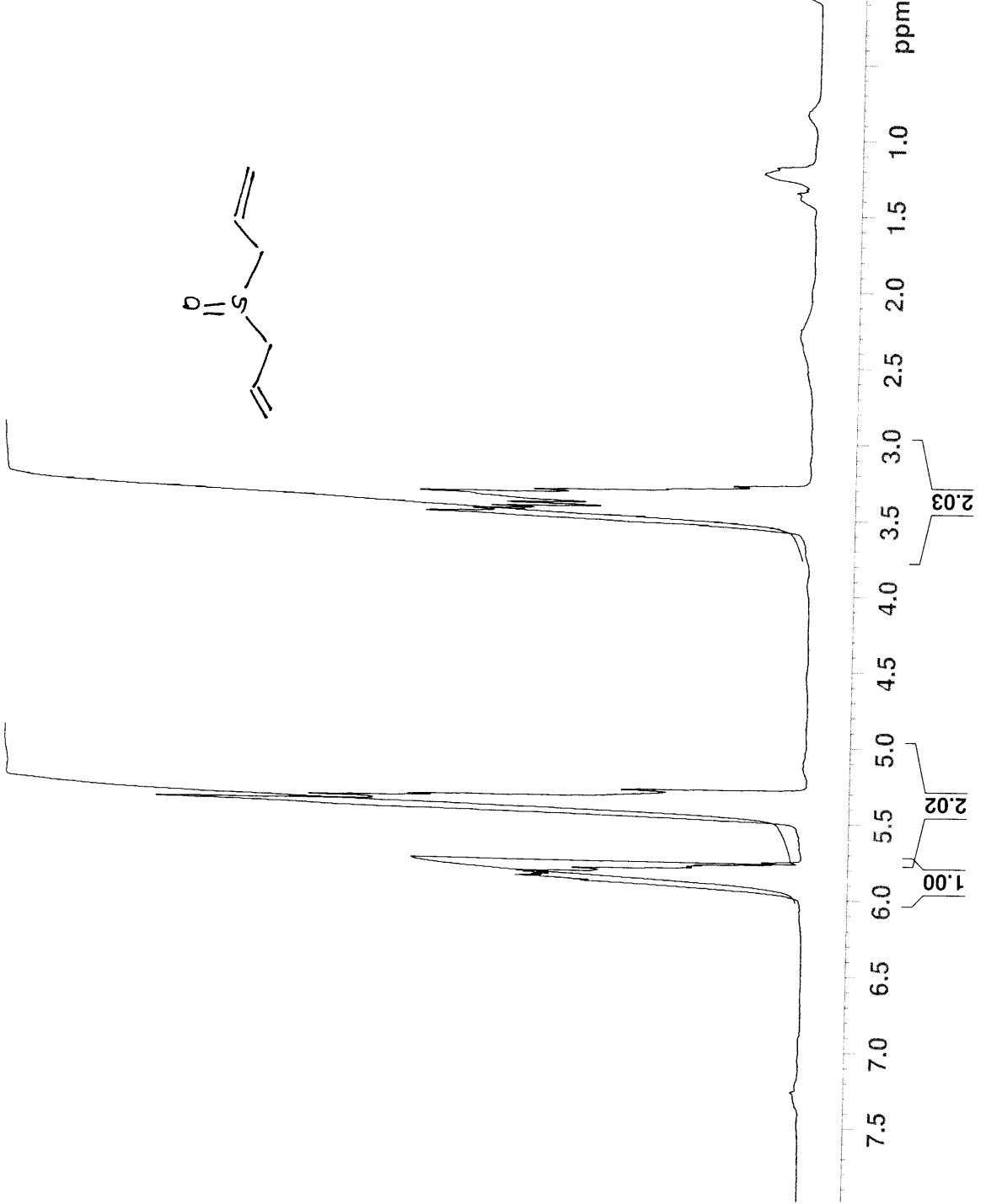
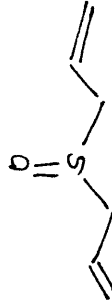
==== CHANNEL f1 =====
NUC1 1H
P1 11.00 usec
PL1 0.00 dB
SFO1 300.1318534 MHz

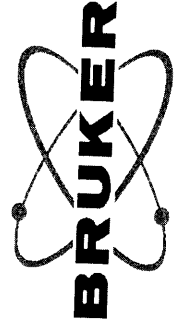
F2 - Processing parameters
SI 32768
SF 300.1300000 MHz
WDW EM
SSB 0
LB 0.30 Hz
GB 0
PC 1.00

3.487
3.464
3.444
3.419
3.356
3.331
3.314
3.288

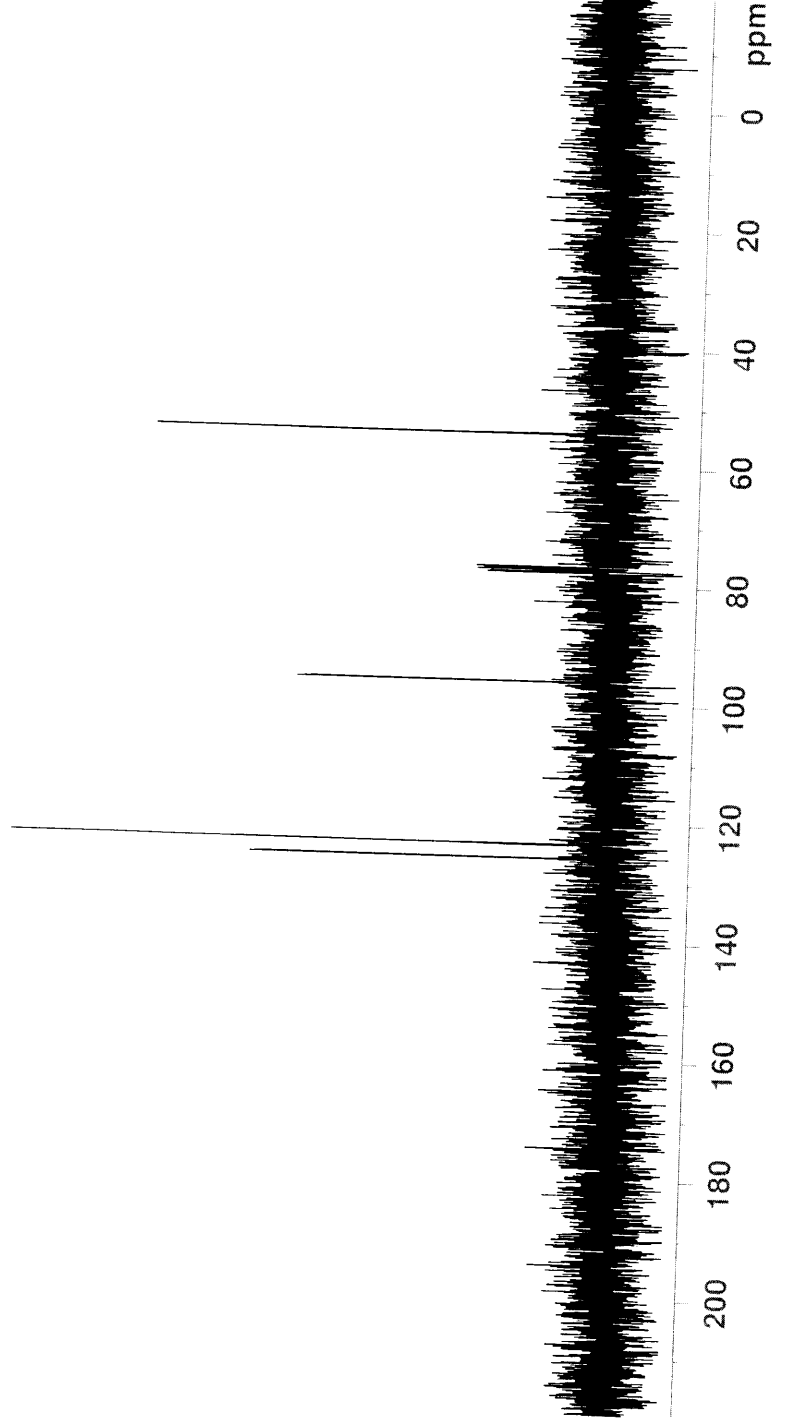
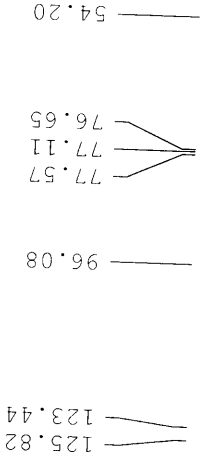
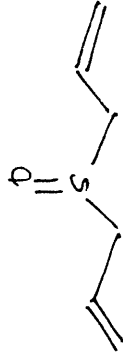
5.896
5.873
5.864
5.847
5.840
5.816
5.792
5.783
5.401
5.381
5.367
5.352
5.295

Diallyl Sulfoxide





Diallyl Sulfoxide



Current Data Parameters
NAME MAK
EXPNO 281
PROCNO 1

F2 - Acquisition Parameters
Date_ 20110409
Time 22.16
INSTRUM spect
PROBHD 5 mm BBO BB-1H
PULPROG zgpg30
TD 65536
SOLVENT CDCl3
NS 2500
DS 4
SWH 18028.846 Hz
FIDRES 0.275098 Hz
AQ 1.8175818 sec
RG 32800
DE 27.733 usec
TE 6.00 usec
D1 300.0 K
d11 2.0000000 sec
DELTA 0.0300000 sec
DELTA 1.89999998 sec
TD0 1

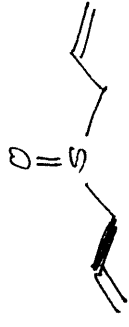
==== CHANNEL f1 =====
NUC1 13C
P1 9.25 usec
PL1 -1.00 dB
SF01 75.4752953 MHz

==== CHANNEL f2 =====
CPDPRG2 waltz16
NUC2 1H
PCPD2 80.00 usec
PL12 17.00 dB
PL13 17.00 dB
PL2 0.00 dB
SF02 300.1312005 MHz

F2 - Processing parameters
SI 32768
SF 75.4677490 MHz
WDW EM
SSB 0
LB 1.00 Hz
GB 0
PC 1.40



Diallyl Sulfoxide



125.843
123.450

54.213

Current Data Parameters
NAME MAK
EXPNO 280
PROCNO 1

F2 - Acquisition Parameters
Date_ 20110409
Time 22.04
INSTRUM spect
PROBHD 5 mm BBO BB-1H
PULPROG dephl35
TD 65536
SOLVENT CDCl3
NS 98
DS 8
SWH 18115.941 Hz
FIDRES 0.276427 Hz
AQ 1.8088436 sec
RG 2050
DW 27.600 usec
DE 6.00 usec
TE 300.0 K
CNST2 145.0000000
D1 4.0000000 sec
d12 0.00002000 sec
d2 0.0034828 sec
DELTA 0.00001178 sec
TD0 1

==== CHANNEL f1 =====
NUC1 13C
P1 9.25 usec
P2 18.50 usec
PL1 -1.00 dB
SFO1 75.4745411 MHz

==== CHANNEL f2 =====
CPDPRG2 waltz16
NUC2 1H
P3 11.00 usec
P4 22.00 usec
PCPD2 80.00 usec
PL12 17.00 dB
PL2 0.00 dB
SFO2 300.1315007 MHz

F2 - Processing parameters
SI 32768
SF 75.4677490 MHz
WDW EM
SSB 0
LB 1.00 Hz
GB 0
PC 1.40





Current Data Parameters
 NAME MAK
 EXPNO 266
 PROCNO 1

F2 - Acquisition Parameters

Date_ 20110329
 Time 19.23
 INSTRUM spect
 PROBHD 5 mm BBO BB-1H
 PULPROG zg30
 TD 65536
 SOLVENT CDC13
 NS 16
 DS 2
 SWH 6188.119 Hz
 FIDRES 0.094423 Hz
 AQ 5.2953587 sec
 RG 40.3
 DW 80.800 usec
 DE 6.00 usec
 TE 300.0 K
 D1 1.00000000 sec
 TD0 1

==== CHANNEL f1 =====

NUC1 1H
 P1 11.00 usec
 PL1 0.00 dB
 SFO1 300.1318534 MHz

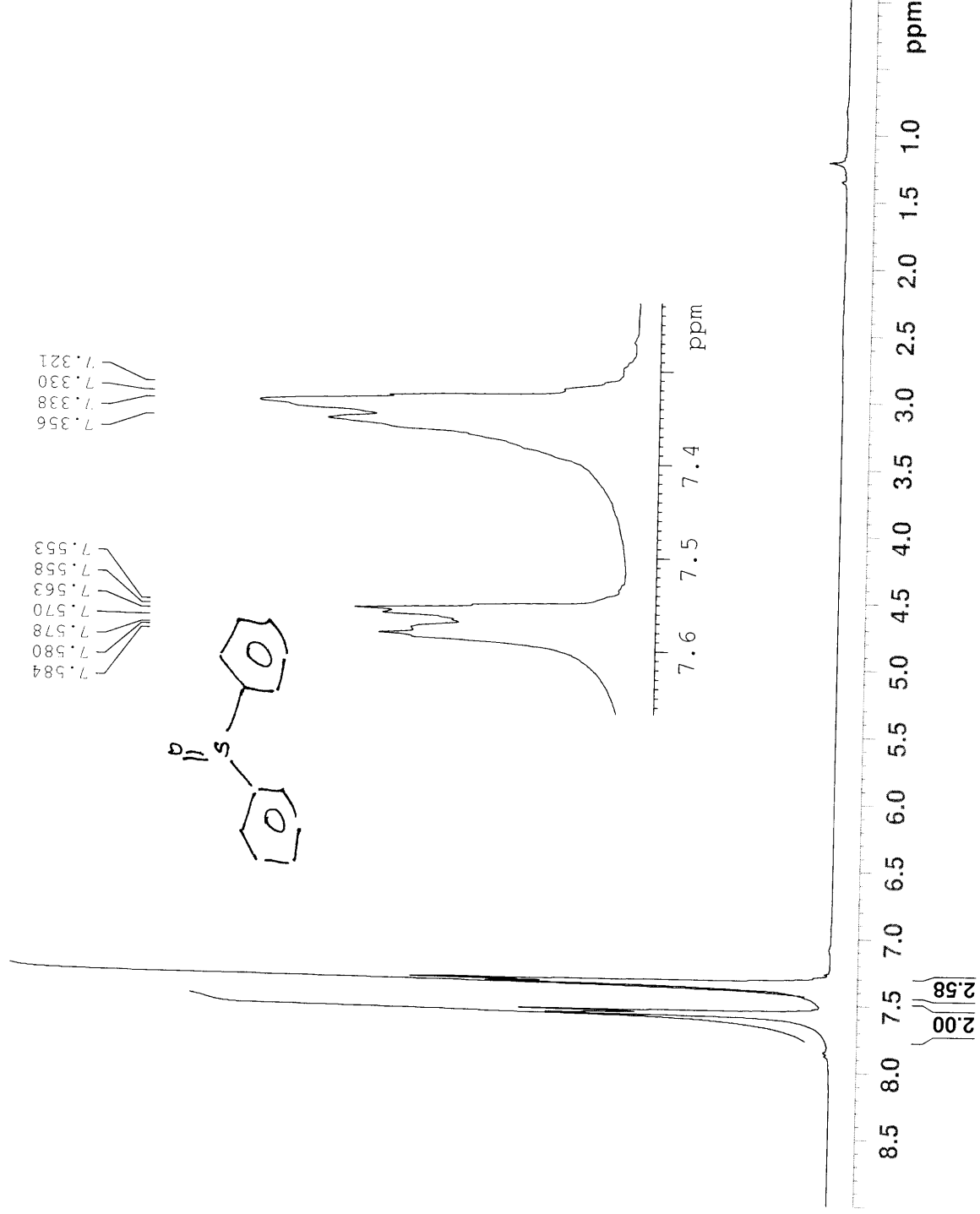
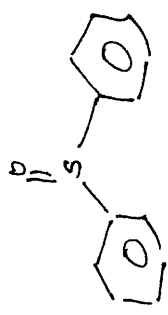
F2 - Processing parameters

SI 32768
 SF 300.1300000 MHz
 WDW EM
 SSB 0
 LB 0.30 Hz
 GB 0
 PC 1.00

7.584
7.580
7.578
7.570
7.563
7.558
7.553
7.356
7.338
7.330
7.321

DP_Sulfoxide

7.584
7.580
7.578
7.570
7.563
7.558
7.553
7.356
7.338
7.330
7.321





DP_Sulfoxide

Current Data Parameters
NAME MAK
EXPNO 267
PROCNO 1

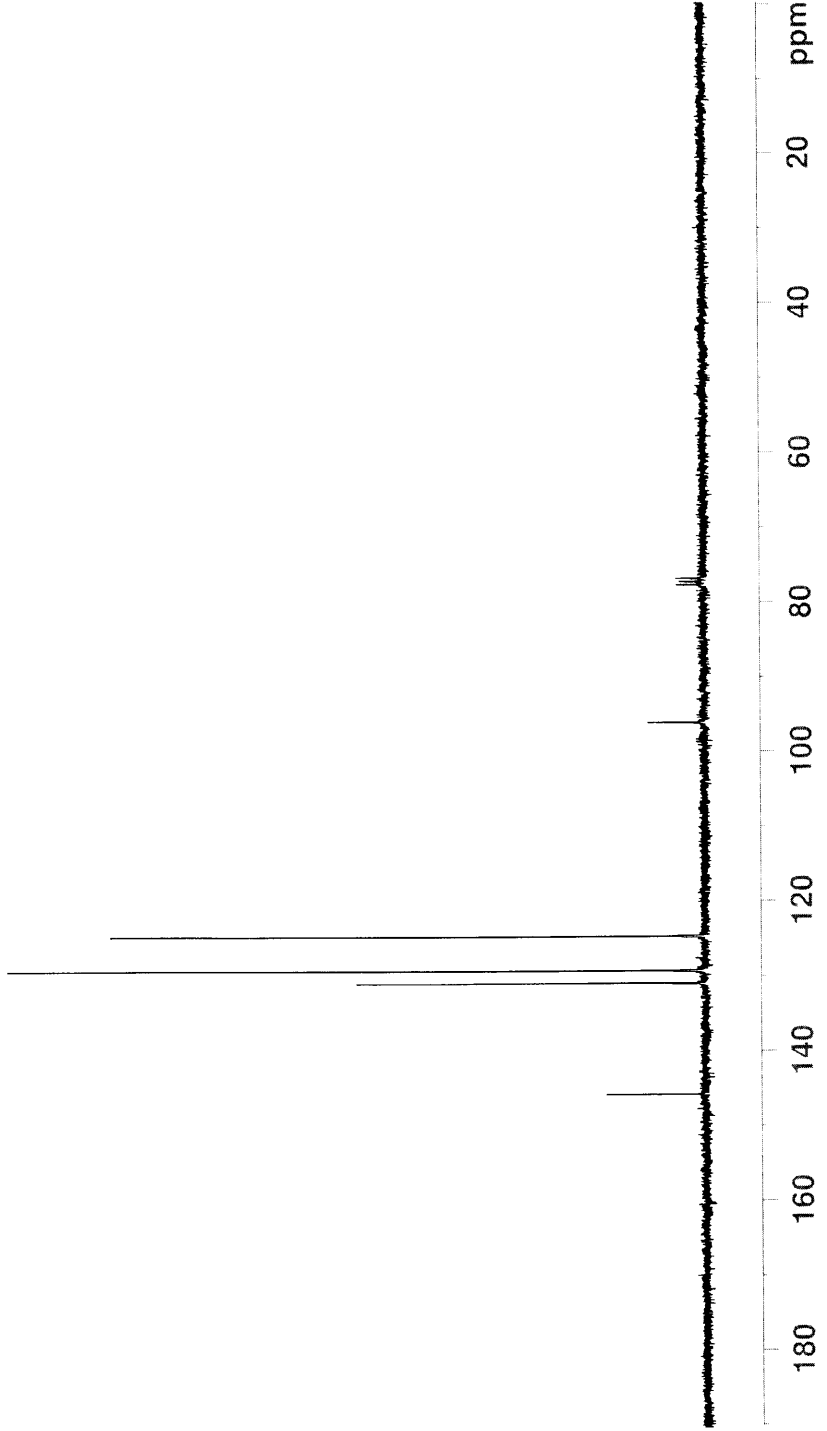
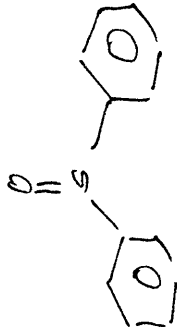
F2 - Acquisition Parameters

Date_ 20110329
Time 19.26
INSTRUM spect
PROBHD 5 mm BBO BB-1H
PULPROG zgpg30
TD 65536
SOLVENT CDCl3
NS 1816
DS 4
SWH 18028.846 Hz
FIDRES 0.275098 Hz
AQ 1.8175818 sec
RG 32800
DW 27.733 usec
DE 6.00 usec
TE 300.0 K
D1 2.00000000 sec
d11 0.03000000 sec
DELTA 1.89999998 sec
TD0 1

==== CHANNEL f1 =====
NUC1 13C
P1 9.25 usec
PL1 -1.00 dB
SFO1 75.4752953 MHz

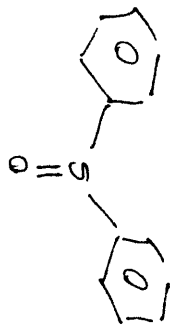
==== CHANNEL f2 =====
CPDPRG2 waltz16
NUC2 1H
PCPD2 80.00 usec
PL12 17.00 dB
PL13 17.00 dB
PL2 0.00 dB
SFO2 300.1312005 MHz

F2 - Processing parameters
SI 32768
SF 75.4677490 MHz
WDW EM
SSB 0
LB 1.00 Hz
GB 0
PC 1.40





DP_Sulfoxide



130.905
129.213
124.642

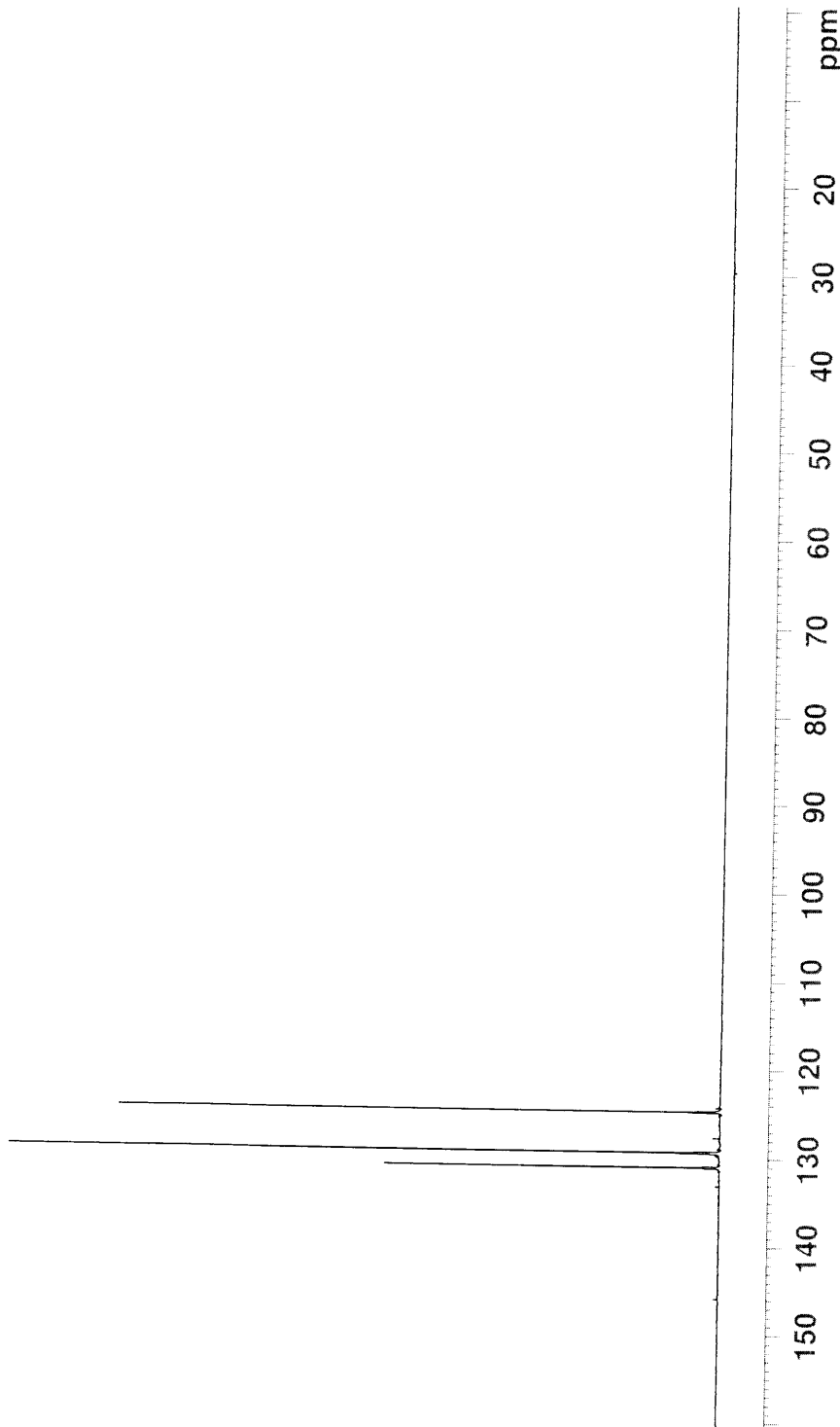
Current Data Parameters
NAME MAK
EXPNO 268
PROCNO 1

F2 - Acquisition Parameters
Date_ 20110329
Time 21.24
INSTRUM spect
PROBHD 5 mm BBO BB-1H
PULPROG dept135
TD 65536
SOLVENT CDC13
NS 1348
DS 8
SWH 18115.941 Hz
FIDRES 0.276427 Hz
AQ 1.8088436 sec
RG 2050
DW 27.600 usec
DE 6.00 usec
TE 300.0 K
CNST2 145.0000000
d1 4.0000000 sec
d12 0.00002000 sec
d2 0.00344828 sec
DELTA 0.00001178 sec
TD0 1

==== CHANNEL f1 =====
NUC1 13C
P1 9.25 usec
P2 18.50 usec
PL1 -1.00 dB
SFO1 75.4745411 MHz

==== CHANNEL f2 =====
CPDPRG2 waltz16
NUC2 1H
P3 11.00 usec
P4 22.00 usec
PCPD2 80.00 usec
PL12 17.00 dB
PL2 0.00 dB
SFO2 300.1315007 MHz

F2 - Processing parameters
SI 32768
SF 75.4677490 MHz
WDW EM
SSB 0
LB 1.00 Hz
GB 0
PC 1.40





Current Data Parameters
NAME MAK
EXPNO 251
PROCNO 1

F2 - Acquisition Parameters
Date_ 20110325
Time 10.52
INSTRUM spect
PROBHD 5 mm BBO BB-1H
PULPROG zg30
TD 65536
SOLVENT CDCl3
NS 16
DS 2
SWH 6188.119 Hz
FIDRES 0.094423 Hz
AQ 5.2953587 sec
RG 256
DW 80.800 usec
DE 6.00 usec
TE 300.0 K
D1 1.00000000 sec
TD0 1

==== CHANNEL f1 =====
NUC1 1H
P1 11.00 usec
PL1 0.00 dB
SFO1 300.1318534 MHz

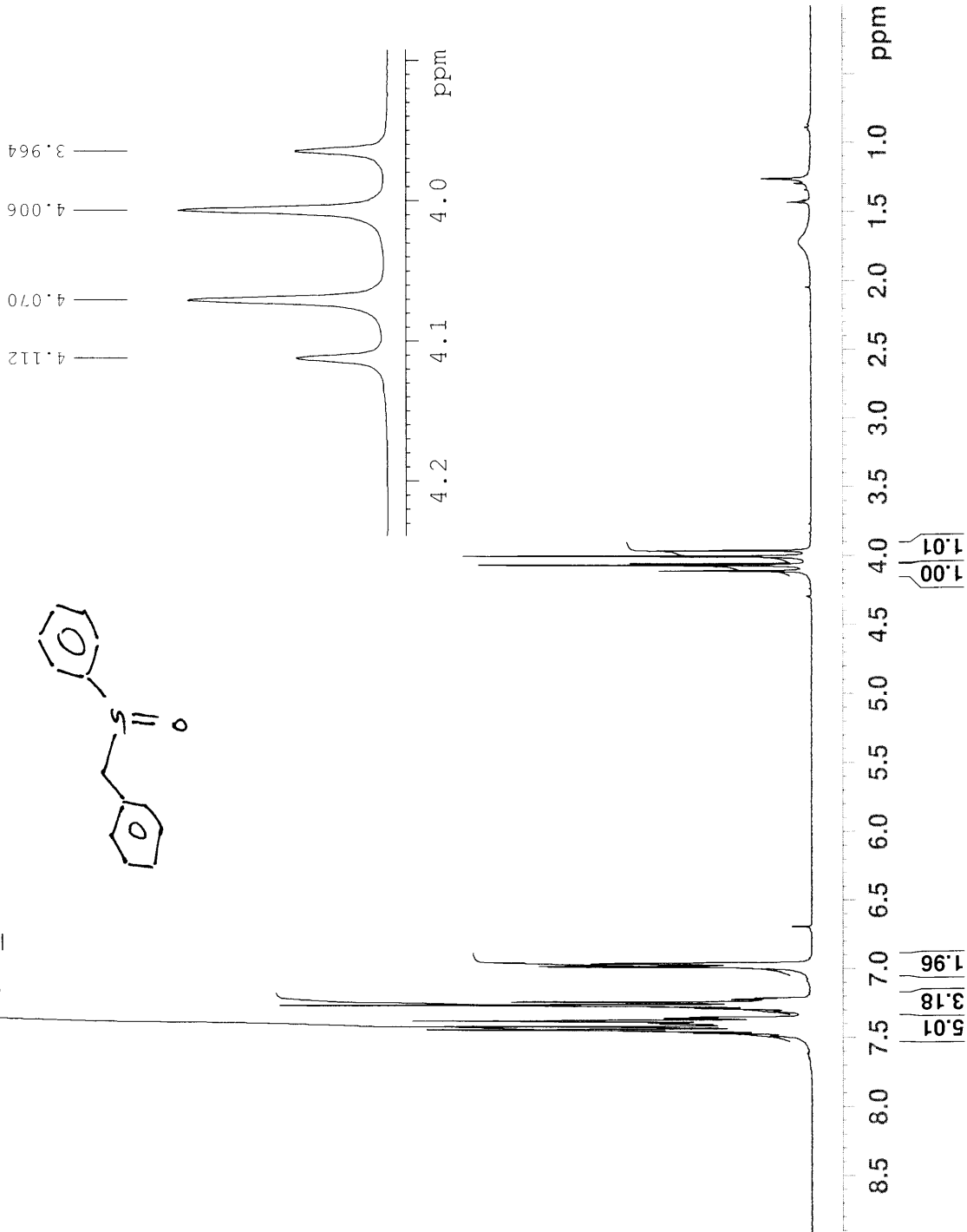
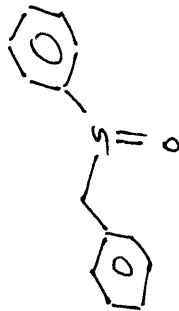
F2 - Processing parameters
SI 32768
SF 300.1300000 MHz
WDW EM
SSB 0
LB 0.30 Hz
GB 0
PC 1.00

1.727
1.524
1.434
1.421
1.343
1.299
1.263
1.171
1.135

4.112
4.070
4.006
3.964

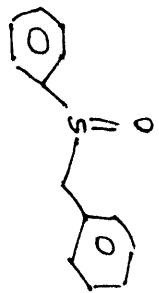
7.410
7.405
7.399
7.391
7.382
7.378
7.373
7.363
7.357
7.350
7.312
7.306
7.289
7.285
7.266
7.260
7.241
7.227
7.221
7.211
6.989
6.984
6.965
6.958
6.691

Oxi_Bz.Ph.Sulfoxide





Oxi_Bz.Ph.Sulfoxide



Current Data Parameters
NAME MAK
EXPNO 253
PROCNO 1

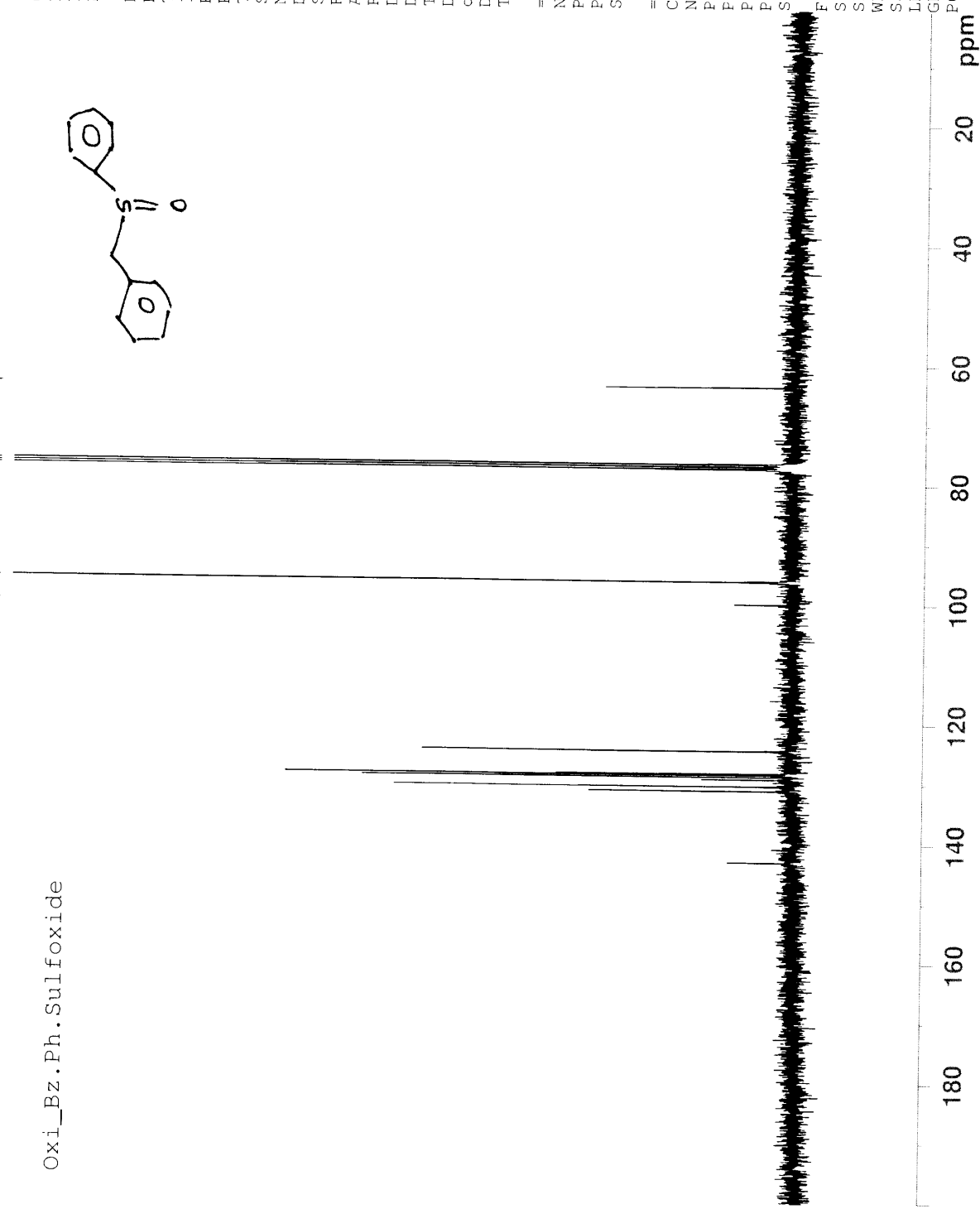
F2 - Acquisition Parameters
Date_ 20110325
Time 16.20
INSTRUM spect
PROBHD 5 mm BBO BB-1H
PULPROG zgpg30
TD 65536
SOLVENT CDC13
NS 1012
DS 4
SWH 18028.846 Hz
FIDRES 0.275098 Hz
AQ 1.8175818 sec
RG 32800
DW 27.733 usec
DE 6.00 usec
TE 300.0 K
D1 2.0000000 sec
d11 0.0300000 sec
DELTA 1.89999998 sec
TD0 1

==== CHANNEL f1 =====
NUC1 13C
P1 9.25 usec
PL1 -1.00 dB
SFO1 75.4752953 MHz

==== CHANNEL f2 =====
CPDPRG2 waltz16
NUC2 1H
PCPD2 80.00 usec
PL12 17.00 dB
PL13 17.00 dB
PL2 0.00 dB
SFO2 300.1312005 MHz

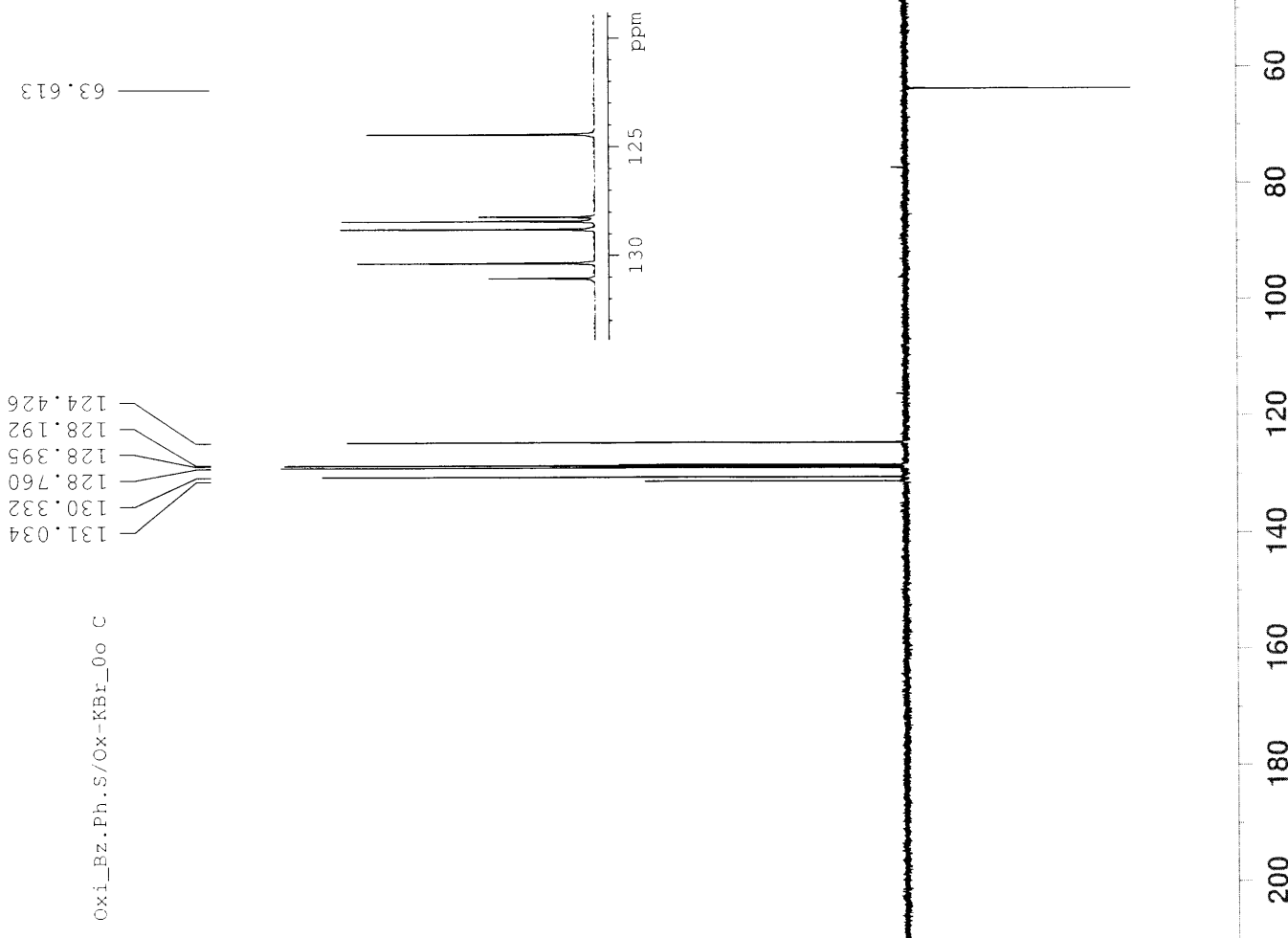
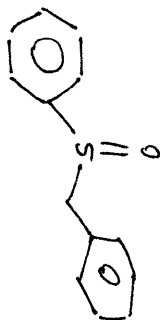
F2 - Processing parameters
SI 32768
SF 75.4677490 MHz
WDW EM
SSB 0
LB 1.00 Hz
GB 0
PC 1.40

143.01
131.01
130.32
129.15
128.75
128.39
128.18
124.42
99.99
96.13
77.35
76.93
76.51
63.64





Oxi_Bz.Ph.S/Ox-KBr_0o C



Current Data Parameters
NAME MAK
EXPNO 252
PROCNO 1

F2 - Acquisition Parameters
Date_ 20110325
Time 15.17
INSTRUM spect
PROBHD 5 mm BBO BB-1H
PULPROG dept135
TD 65536
SOLVENT CDCl3
NS 2500
DS 8
SWH 18115.941 Hz
FIDRES 0.276427 Hz
AQ 1.8088436 sec
RG 2050
DW 27.600 usec
DE 6.00 usec
TE 300.0 K
CNST2 145.000000 sec
D1 4.0000000 sec
d12 0.0002000 sec
d2 0.00344828 sec
DELTA 0.00001178 sec
TD0 1

==== CHANNEL f1 =====
NUC1 13C
P1 9.25 usec
P2 18.50 usec
PL1 -1.00 dB
SFO1 75.4745411 MHz

==== CHANNEL f2 =====
CPDPRG2 waltz16
NUC2 1H
P3 11.00 usec
P4 22.00 usec
PCPD2 80.00 usec
PL12 17.00 dB
PL2 0.00 dB
SFO2 300.1315007 MHz

F2 - Processing parameters
SI 32768
SF 75.4677490 MHz
WDW EM
SSB 0
LB 1.00 Hz
GB 0
PC 1.40