

Supplementary Information

Synthesis of HZSM-5@silicalite-1 core-shell composite and its catalytic application in generation of *p*-xylene by methylation of toluene with methyl bromide

**Yi-Qiang Deng,^a Wei-Fang Zhou,^a Hao-Ming Lv,^a Ying-Ying Zhang,^a Chak-Tong
Au,^{a,b} and Shuang-Feng Yin^{a,*}**

^a State Key Laboratory of Chemo/Biosensing and Chemometrics, College of Chemistry and
Chemical Engineering, Hunan University, Changsha 410082, Hunan, China

^b Department of Chemistry, Hong Kong Baptist University, Kowloon Tong, Hong Kong

*Corresponding author:

Tel (Fax): 86-731-88821310

E-mail: sf_yin@hnu.edu.cn (S.F. Yin)

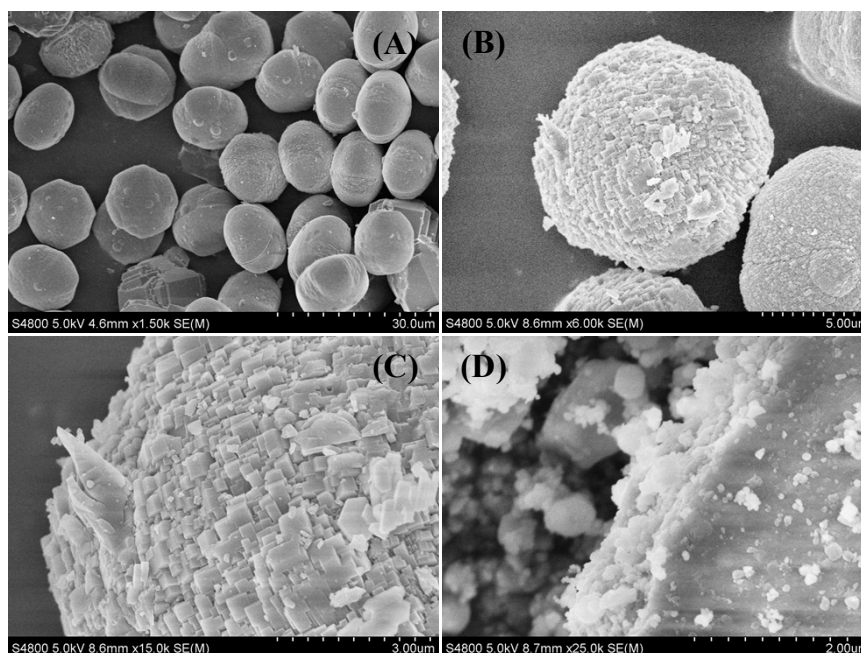


Figure S1. (A) SEM images of the large parent HZSM-5, and (B, C, D) the core-shell structured HZSM-5@silicalite-1. (D: To obtain a section between the zeolite core and silicalite-1 shell, the powder sample was ground extensively before the SEM investigation.)

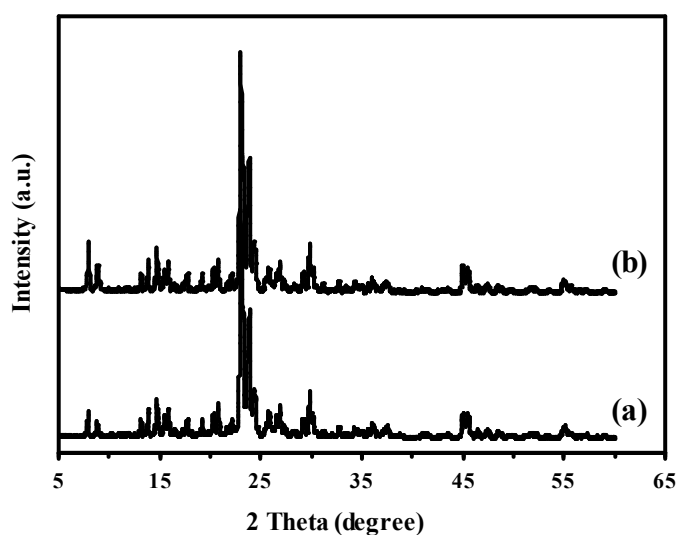


Figure S2. XRD profiles of (a) the large parent HZSM-5, and (b) the core-shell structured HZSM-5@silicalite-1.