

Supporting Information

Effect of Selective Solvent on the Aggregate Behavior of the Mixed Langmuir Monolayers of PS-*b*-PEO and PS-*b*-PMMA

Zhuang Wang, Gangyao Wen, Fengyang Zhao, Changchun Huang,
Xiaoqun Wang, Tongfei Shi, and Hongfei Li

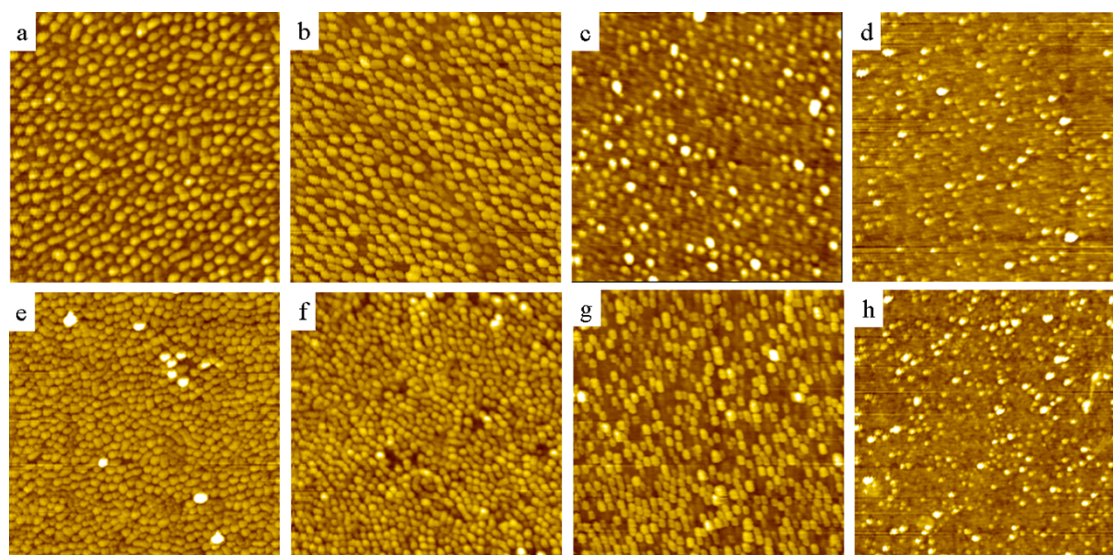


Fig. S1 AFM height images of the mixed LB films of SEO19K and SMMA34K prepared with the nonselective solvent CHCl_3 . The samples are SEO19K-20% (a,e), SEO19K-40% (b,f), SEO19K-60% (c,g) and SEO19K-80% (d,h). Transfer pressures: 0.5 (a-d) and 7 mN/m (e-h). Scan area: $2 \mu\text{m} \times 2 \mu\text{m}$.

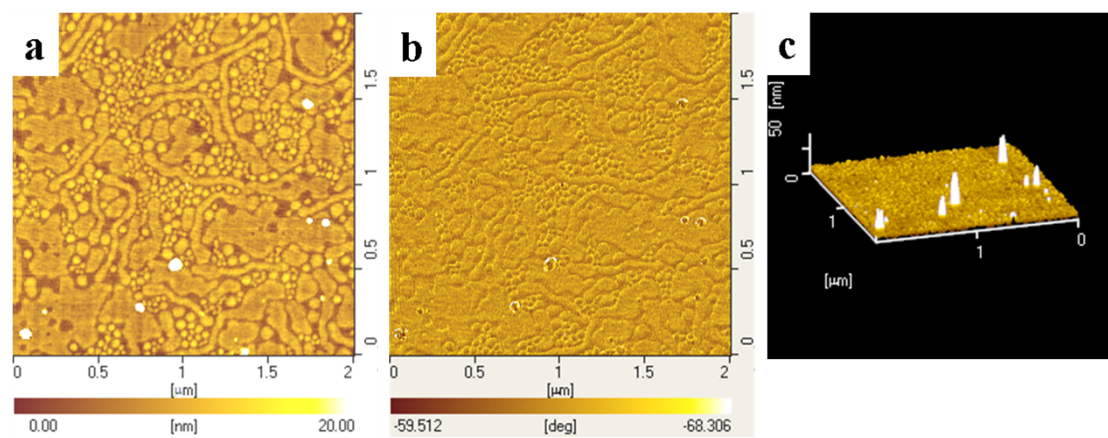


Fig. S2 2-D AFM height (a) and phase images (b), and 3-D height image (c) of the LB film of SMMA34K (Figure 4b) showing some dust or oddment introduced during the cutting of an LB film.