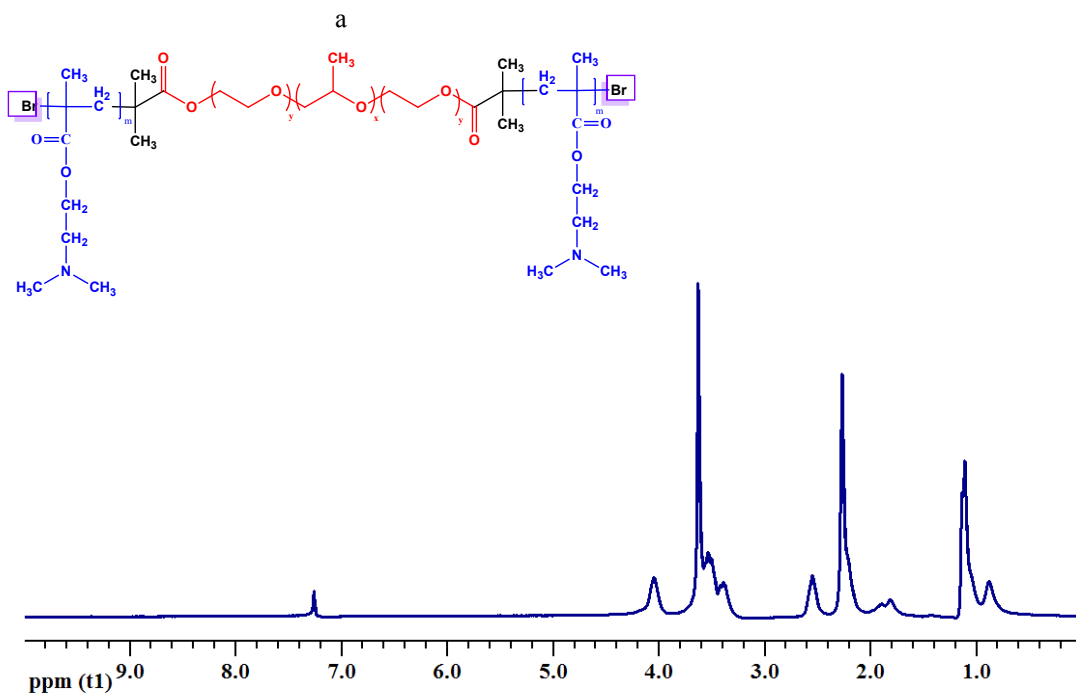
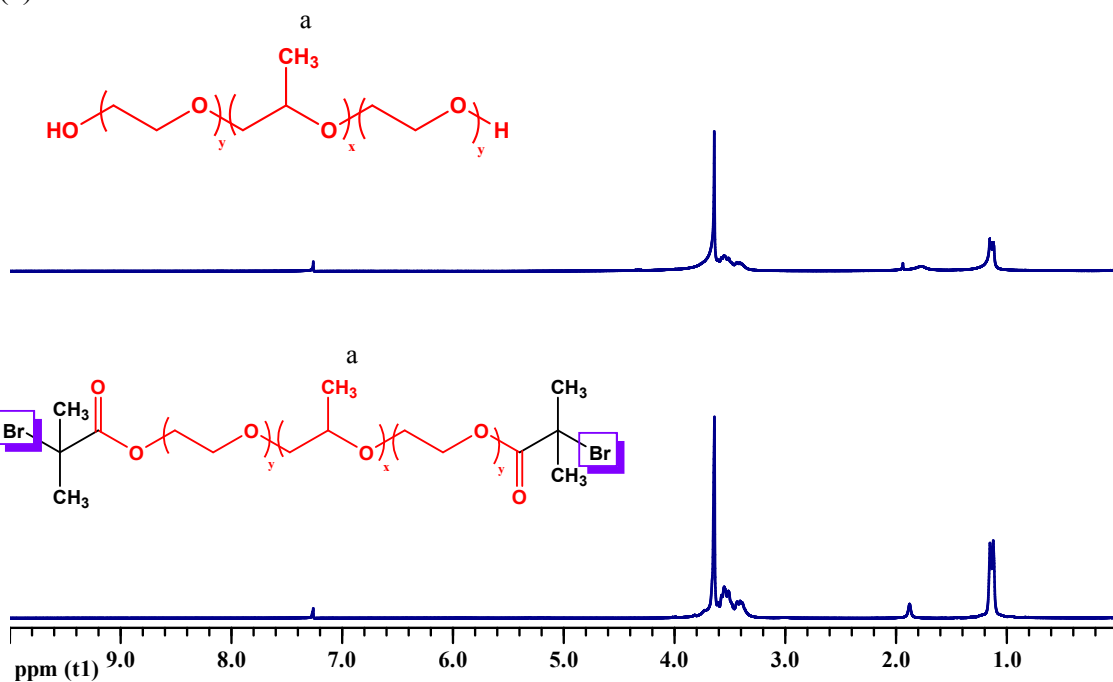


Supporting Information

(a)



(b)

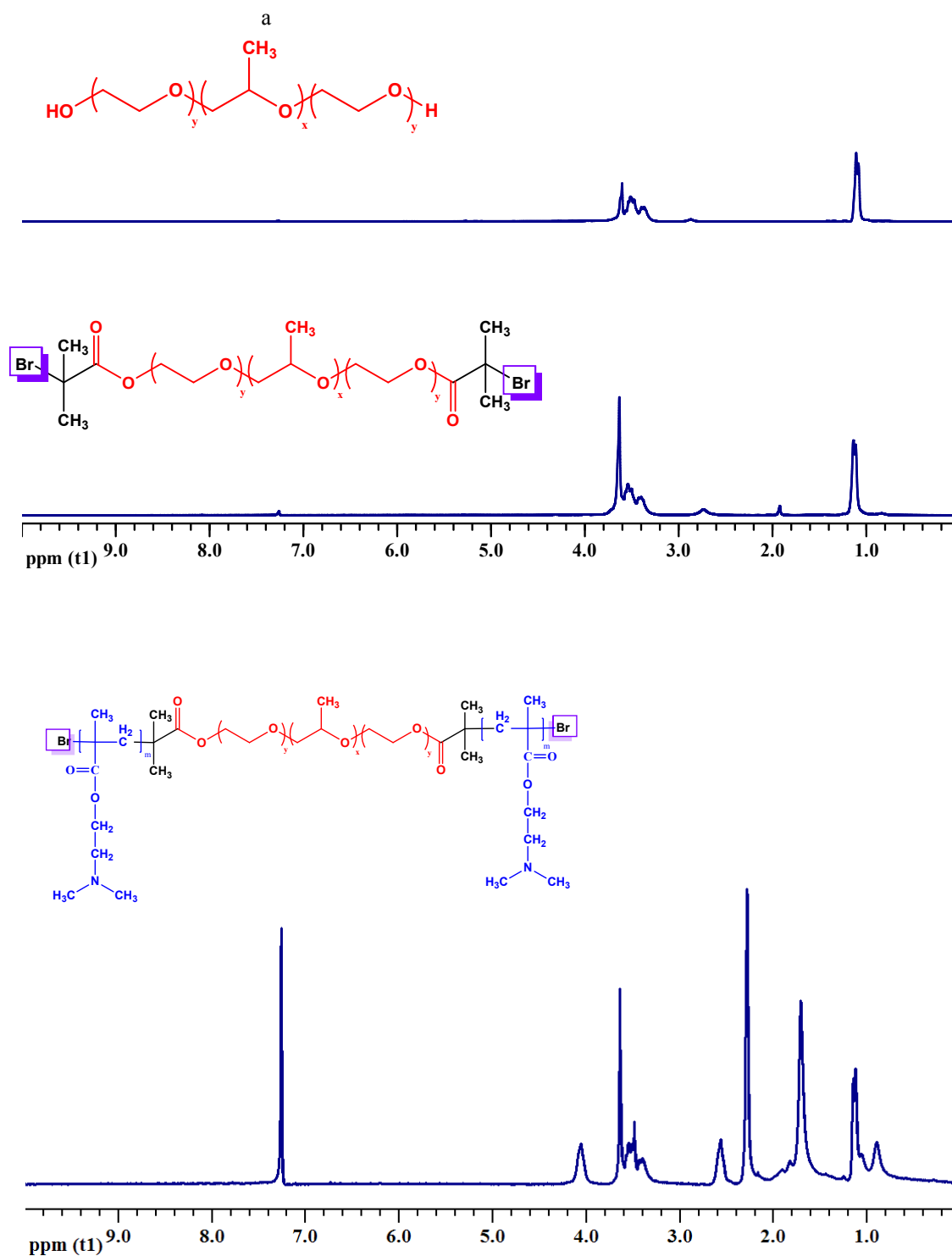


Figure S1. ¹H-NMR spectra of (a) PP123, PP123-Br and PP123-*b*-pDMAEMA, (b) PL121, PL121-Br and PL121-*b*-pDMAEMA.

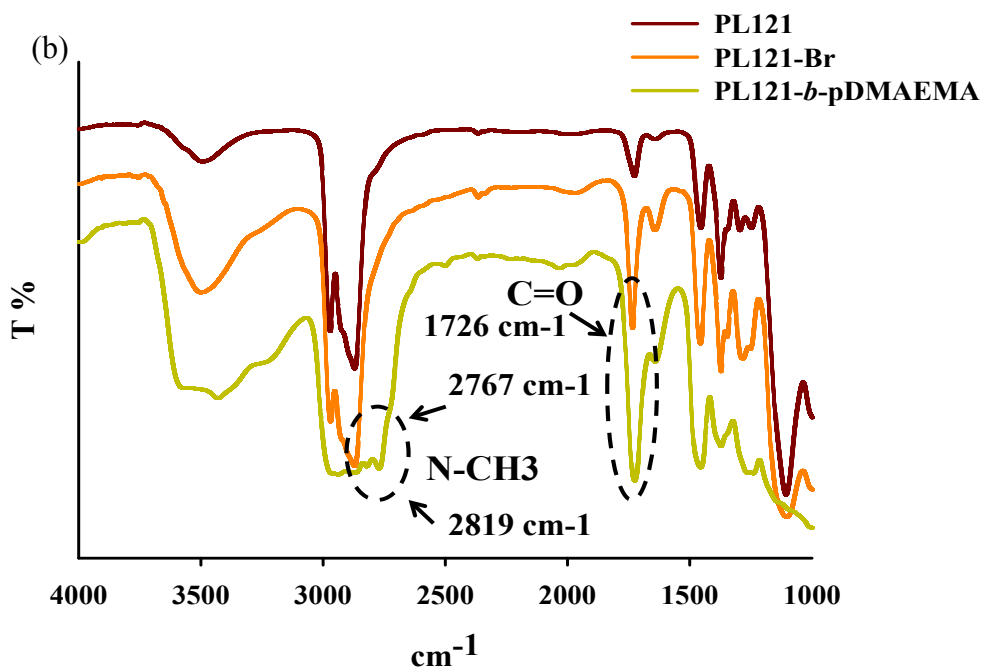
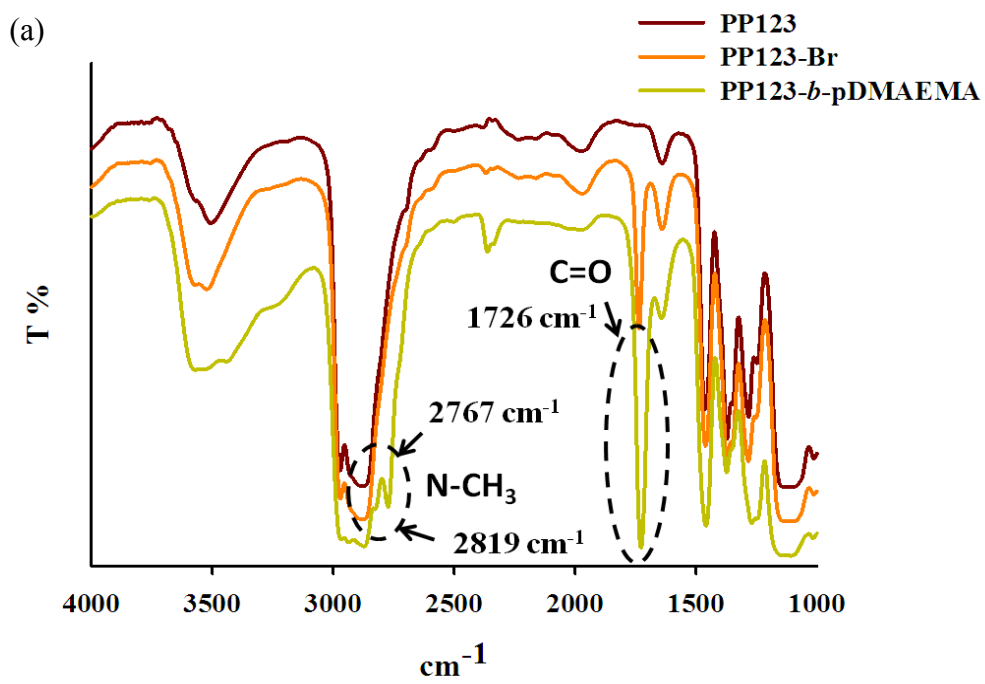
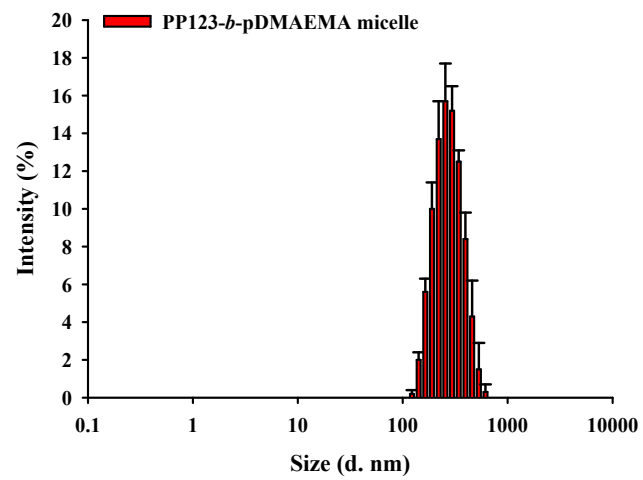
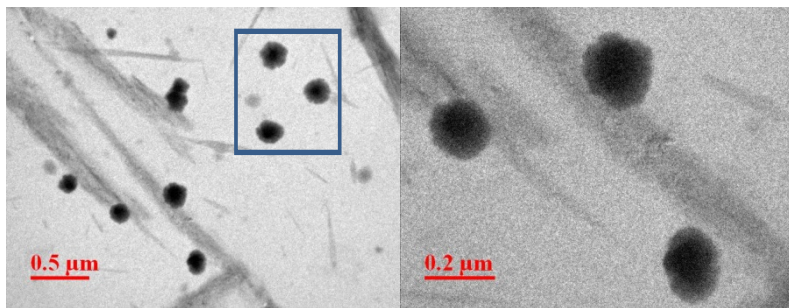
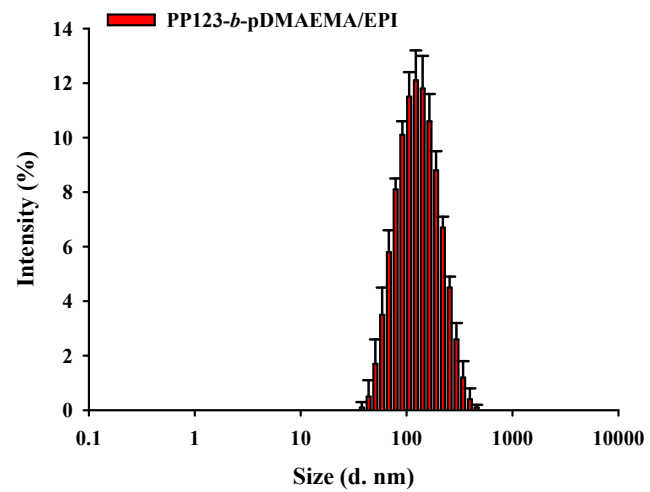
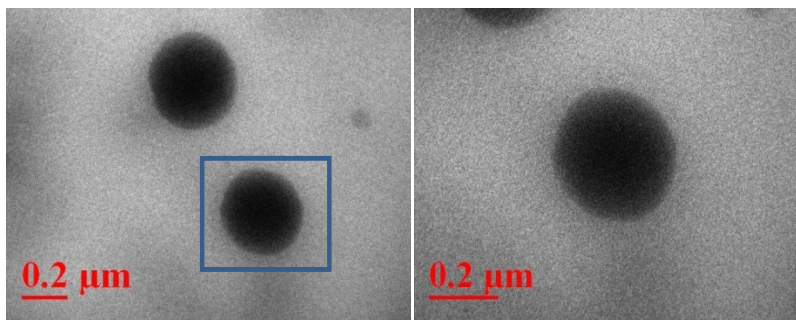


Figure S2. FTIR spectra of (a) PP123, PP123-Br and PP123-*b*-pDMAEMA (b) PL121, PL121-Br and PL121-*b*-pDMAEMA.

(a)



(b)



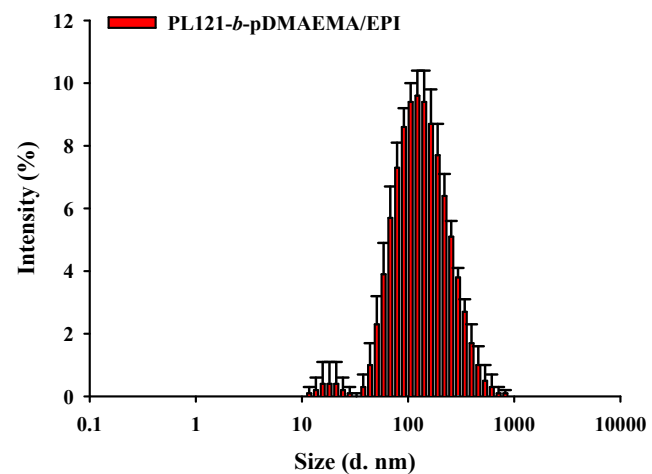
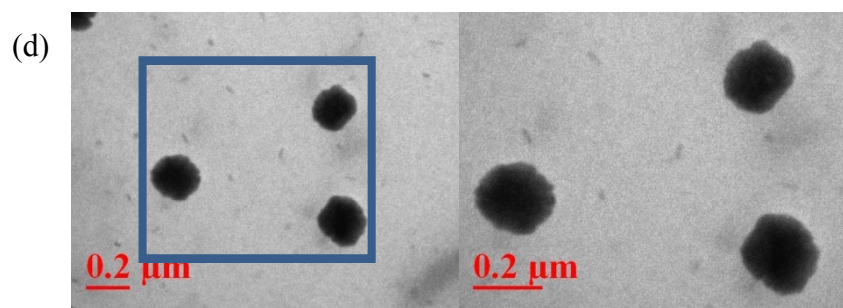
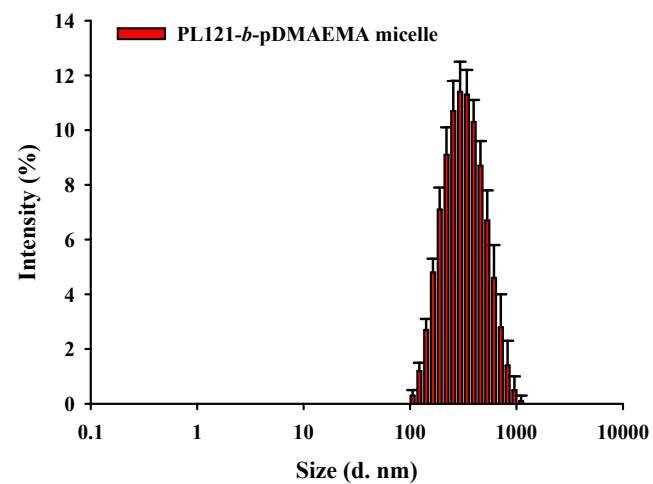
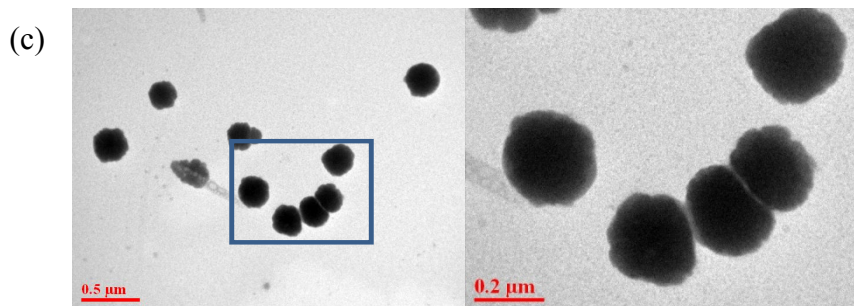


Figure S3. TEM images and dynamic light scattering (DLS) diagrams of (a) PP123-*b*-pDMAEMA micelle without EPI (b) PP123-*b*-pDMAEMA micelle with EPI (c) PL121-*b*-pDMAEMA micelle without EPI (d) PL121-*b*-pDMAEMA micelle with EPI.

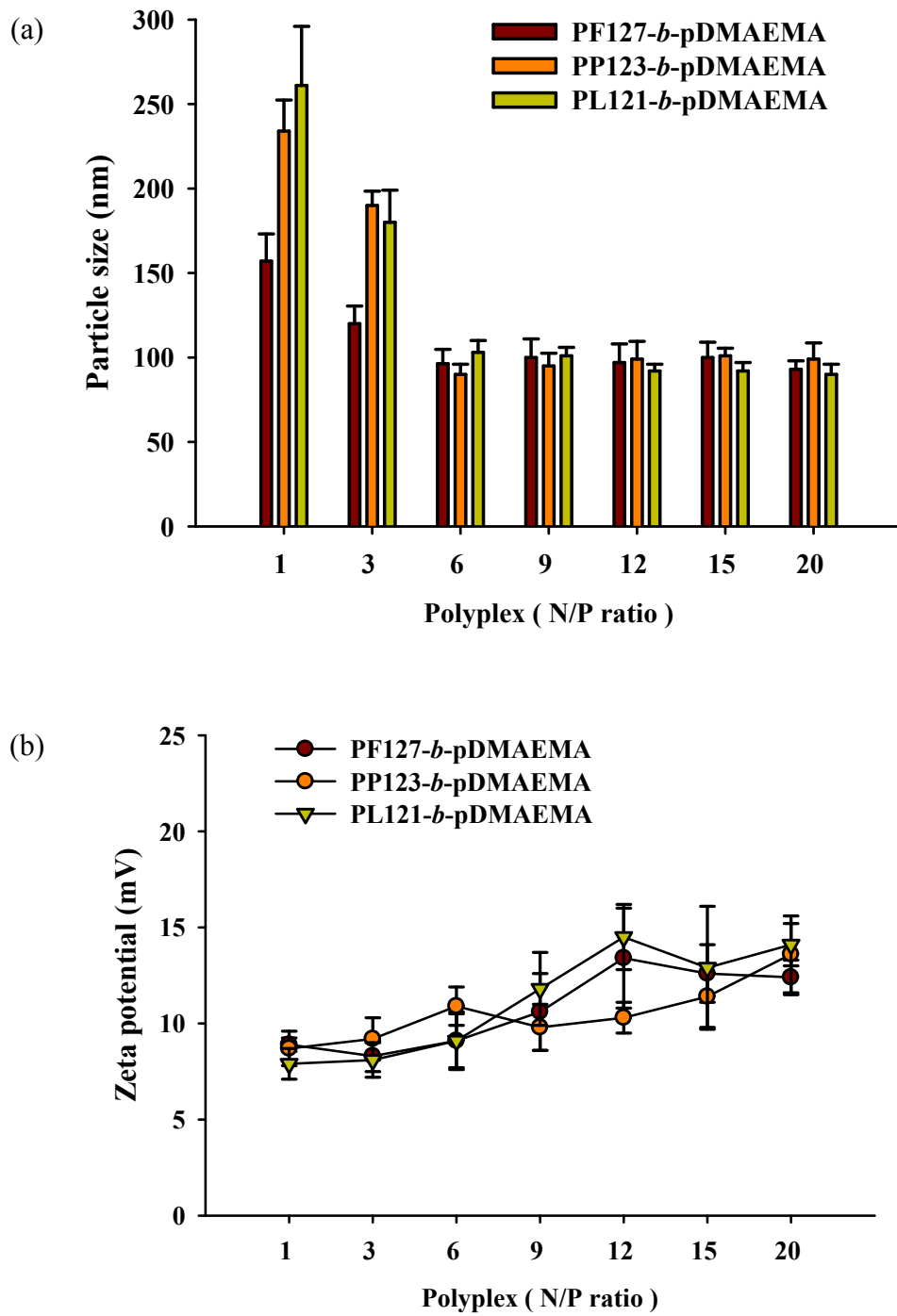


Figure S4. (a) Hydrodynamic diameters and (b) zeta potentials of copolymer/pDNA polyplexes at various N/P ratios (n= 3)

PF127-*b*-pDMAEMA PP123-*b*-pDMAEMA PL121-*b*-pDMAEMA

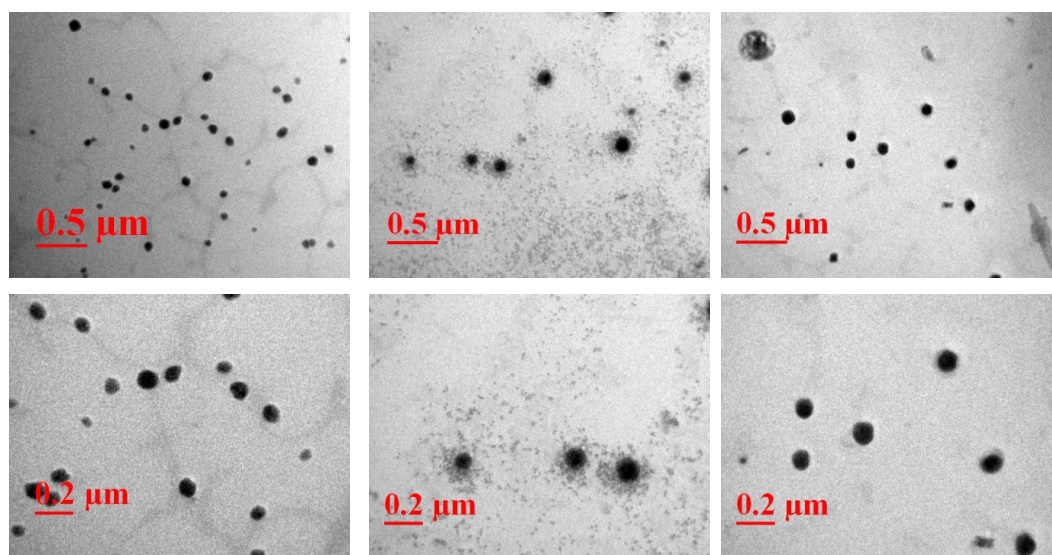


Figure S5. TEM images of copolymer/pDNA polyplexes at N/P= 9.

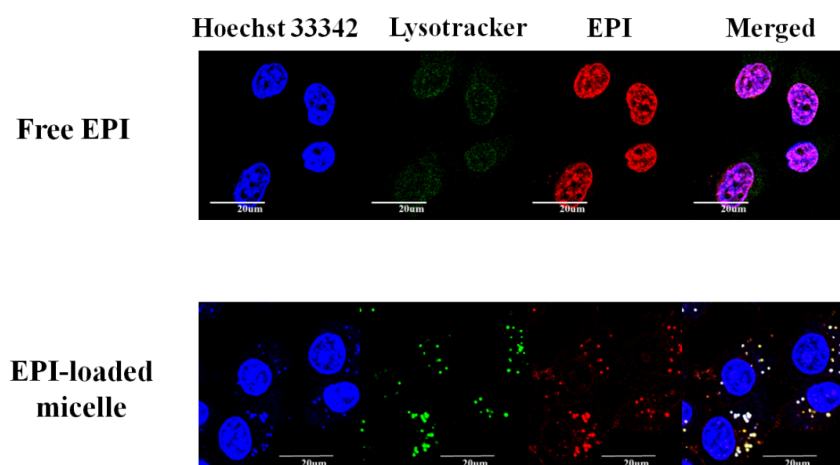


Figure S6. Confocal images of the free EPI and EPI-loaded PL121-*b*-pDMAEMA micelle.