

Electronic Supplementary Information

Highly ordered gold-nanotube films for flow-injection amperometric glucose biosensors

MinHo Yang,^a Kyoung G. Lee,^b Jung Won Kim,^c Seok Jae Lee,^b Yun Suk Huh*^d and Bong Gill Choi*^c

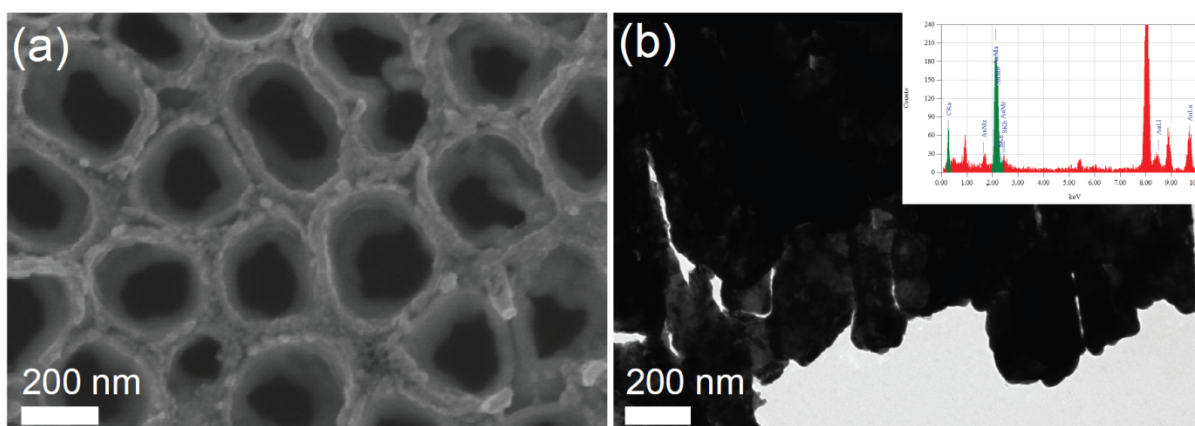


Fig. S1 (a) SEM and (b) TEM images of GOx/ANFE (Inset image is energy dispersive X-ray analysis.).

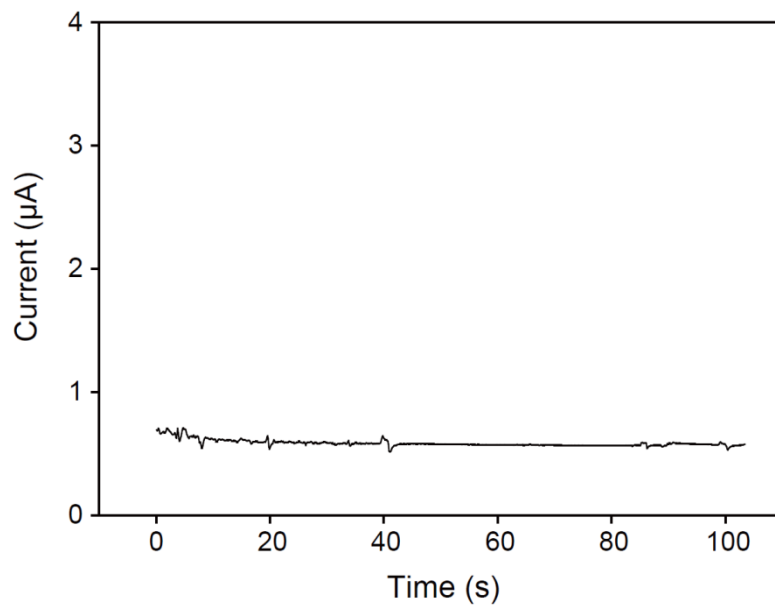


Fig. S2 Background current of GOx/ANFE biosensor using PBS solution in the flow injection system at +0.5 V.

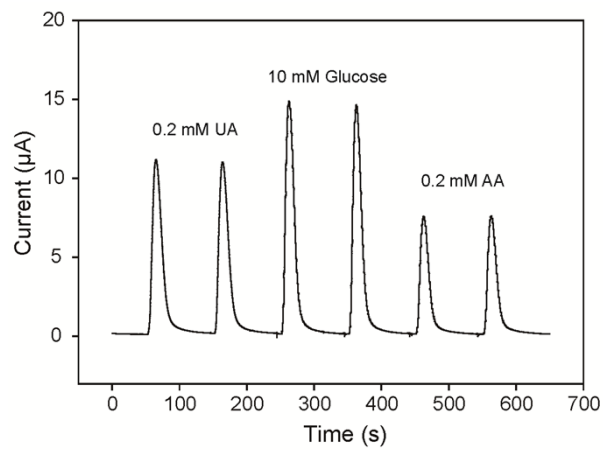


Fig. S3 Effect of interfering species of 0.2 mM UA, 10 mM glucose, 0.2 mM AA on the GOx/ANFE biosensor at operating potential of + 0.5 V.

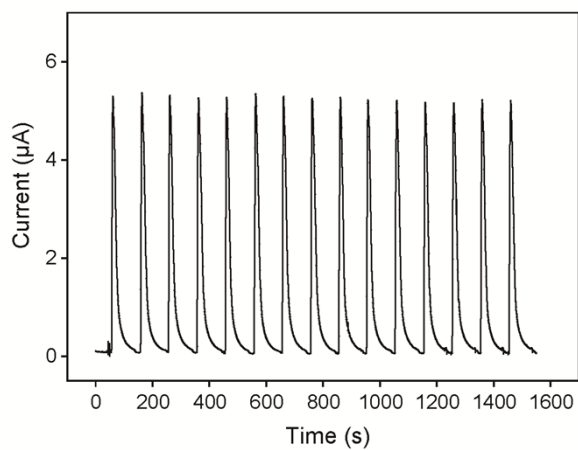


Fig. S4 Amperometric responses of GOx/ANFE electrode-based fluidic biosensor by repeating fifteen times injection of glucose with concentration of 4 mM at +0.5 V.