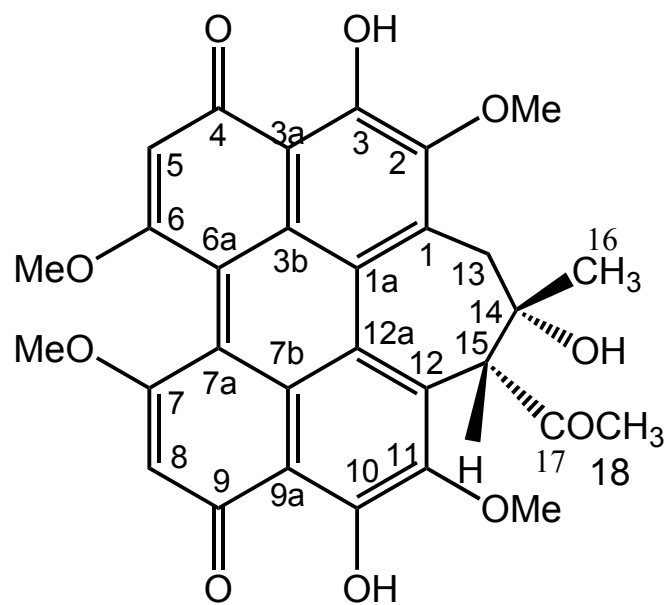
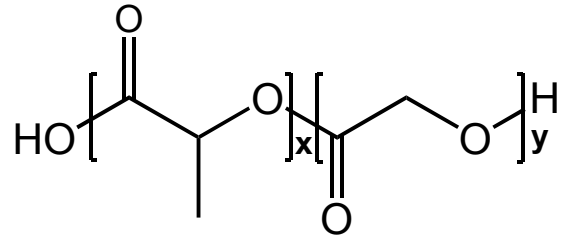


Supplementary information

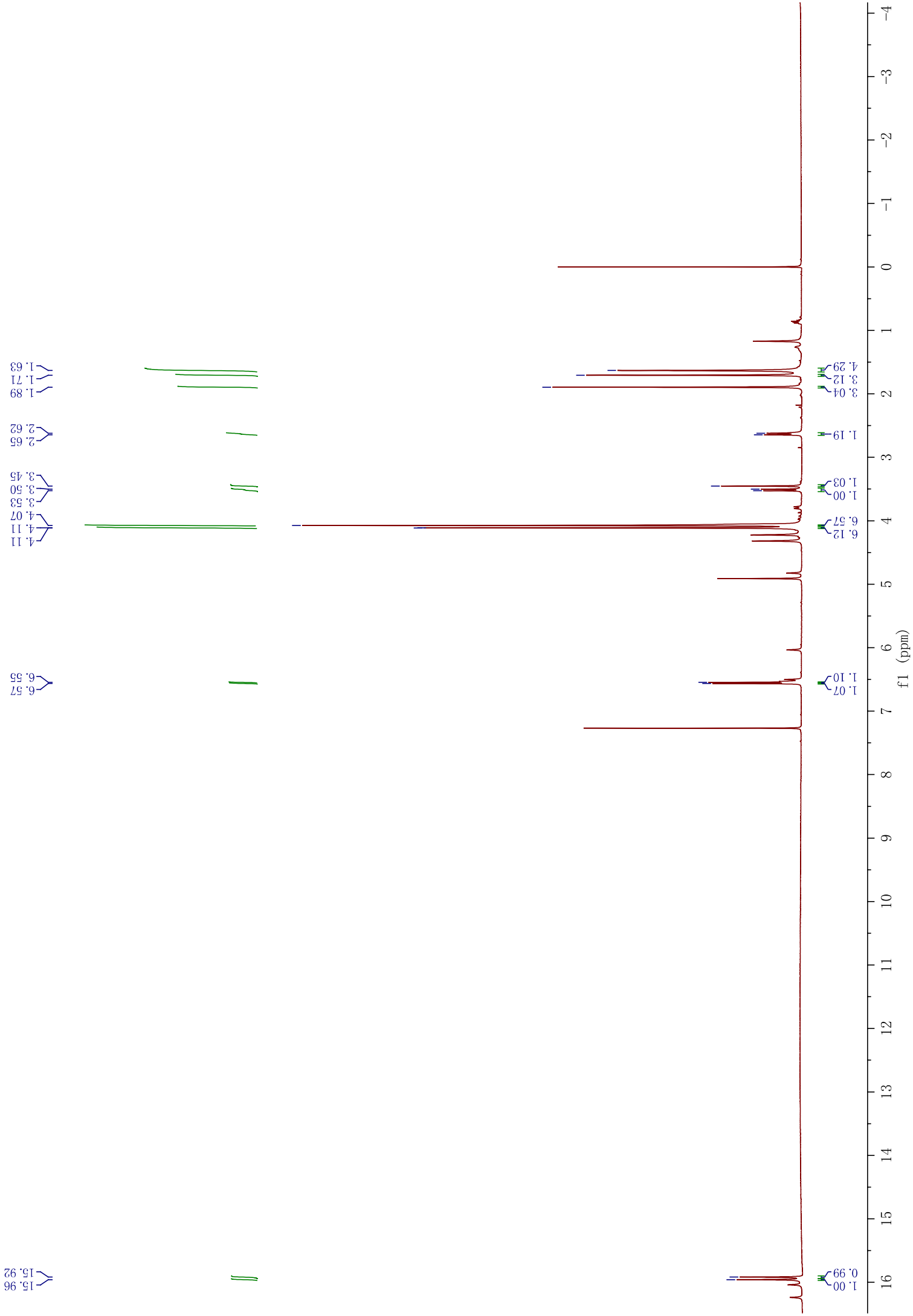


a. Structure of hypocrellin A

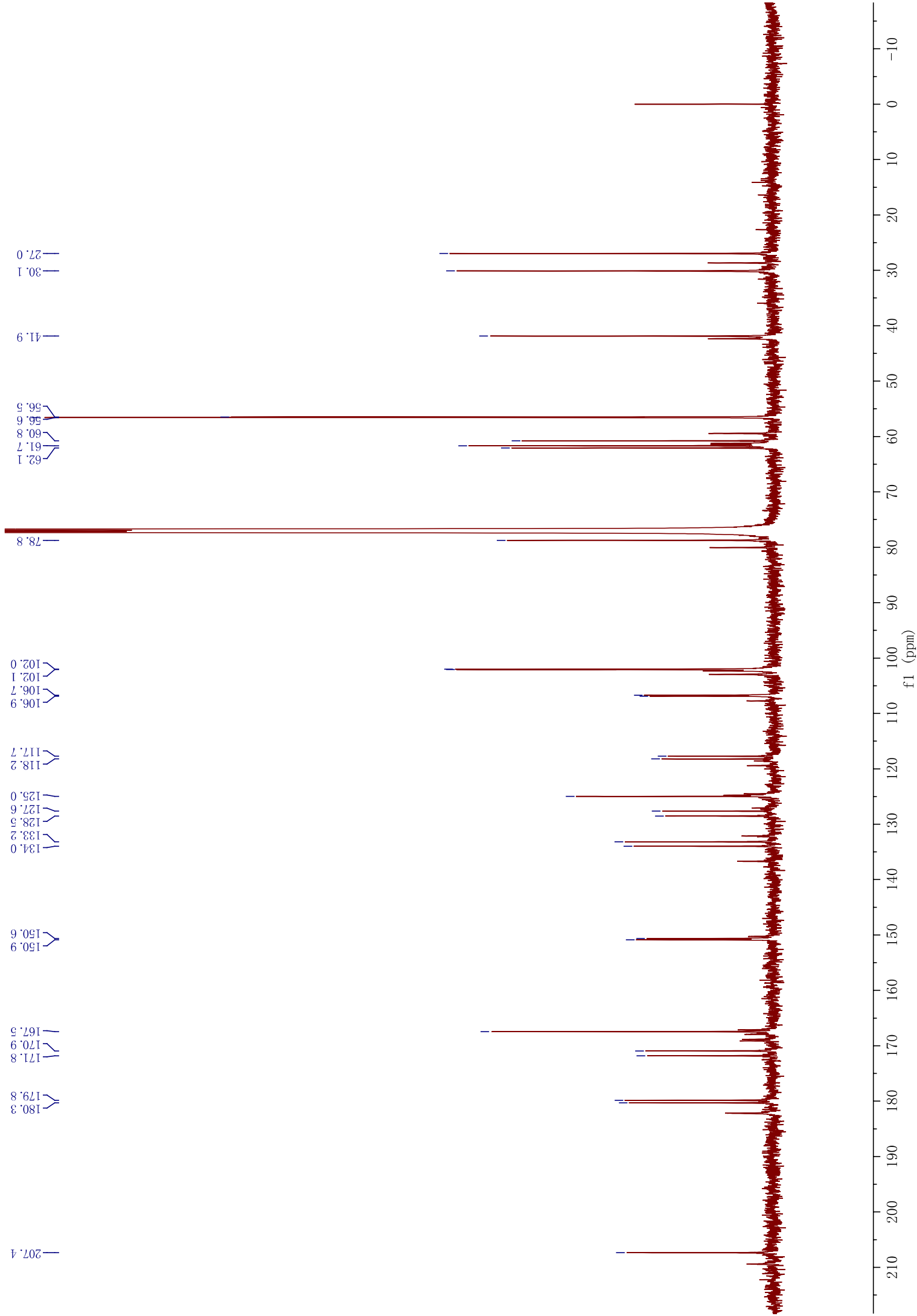


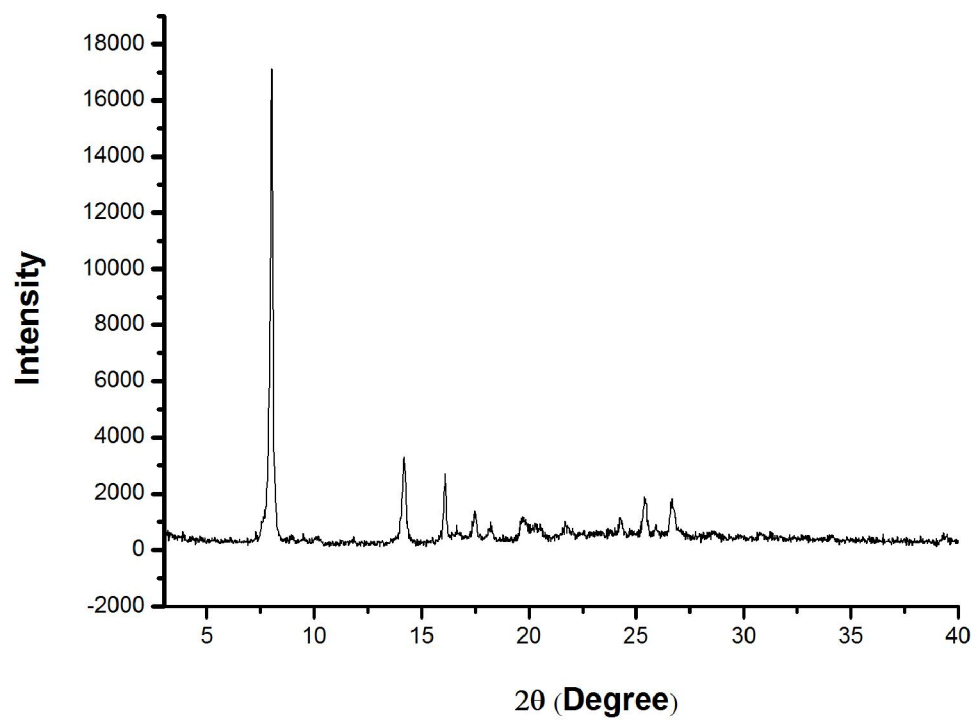
b. Structure of PLGA

c. ¹H NMR spectra of HA

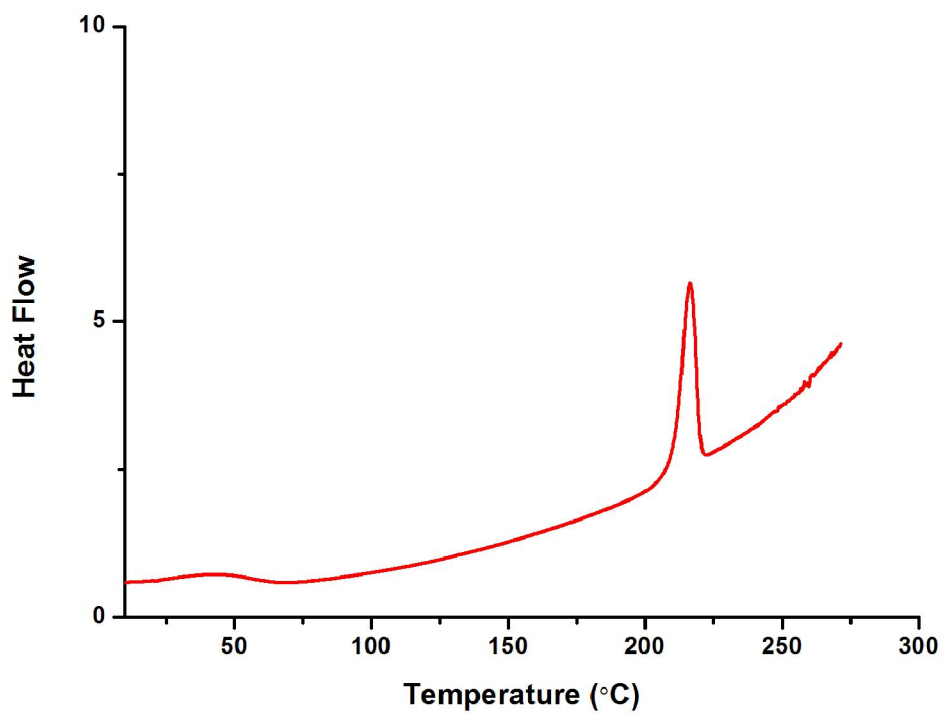


d.¹³C NMR spectra of HA

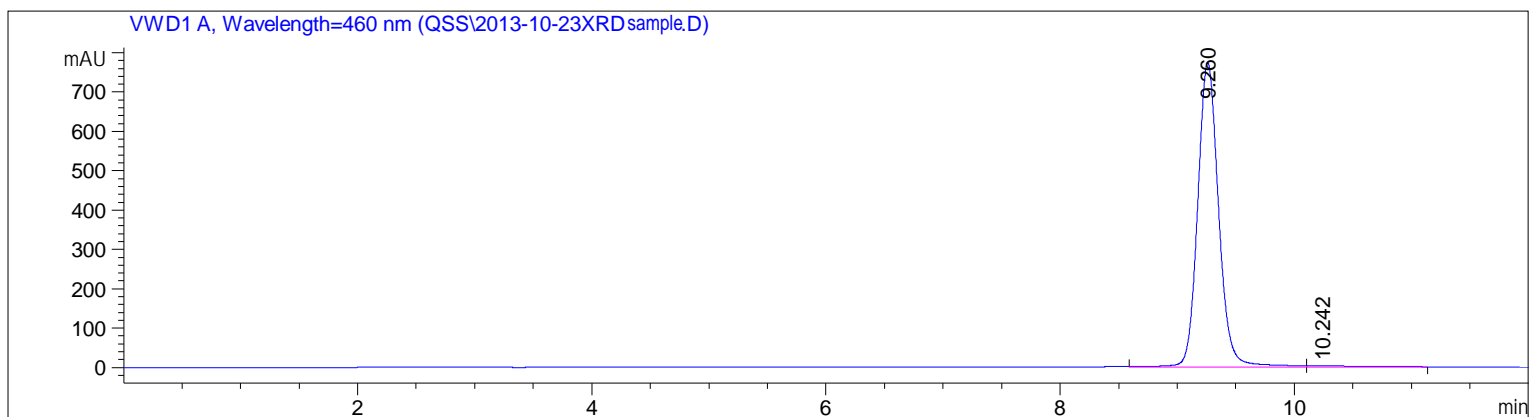




e. XRD spectra of HA



f. DSC spectra of HA



g. HPLC report on HA purity

=====
 Area Percentage Report
 =====

Sort : Signal
 Multiplicative Factor : 1.0000
 Dilution Factor : 1.0000

signal 1: VWD1 A, Wavelength=460 nm

peaks #	retention time [min]	peak width [min]	peak area [mAU*s]	peak height [mAU]	peak width %
1	9.260 VV	0.1911	9628.50195	774.02173	99.0703
2	10.242 VB	0.3215	90.35640	3.40585	0.9297