

Supporting Information

Rayleigh-Instability-Driven Morphology Transformation of Electrospun Polymer Fibers Imaged by in Situ Optical Microscopy and Stimulated Raman Scattering Microscopy

Ting-Hsien Lee, Yu-Jing Chiu, Yu-Cheng Lai, Ping-Wen Fan, Tyng-Yow Kuo, Ian
Liau,* and Jiun-Tai Chen*

Department of Applied Chemistry, National Chiao Tung University, Hsinchu, Taiwan 30050

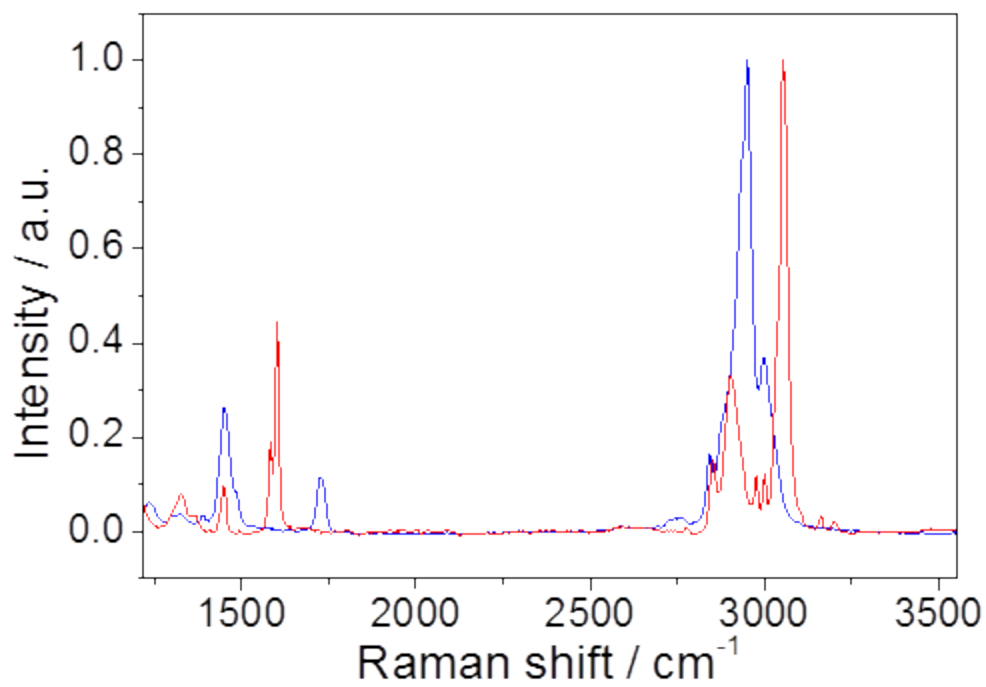


Figure S1. Raman spectra of PS (red curve) and PMMA (blue curve).