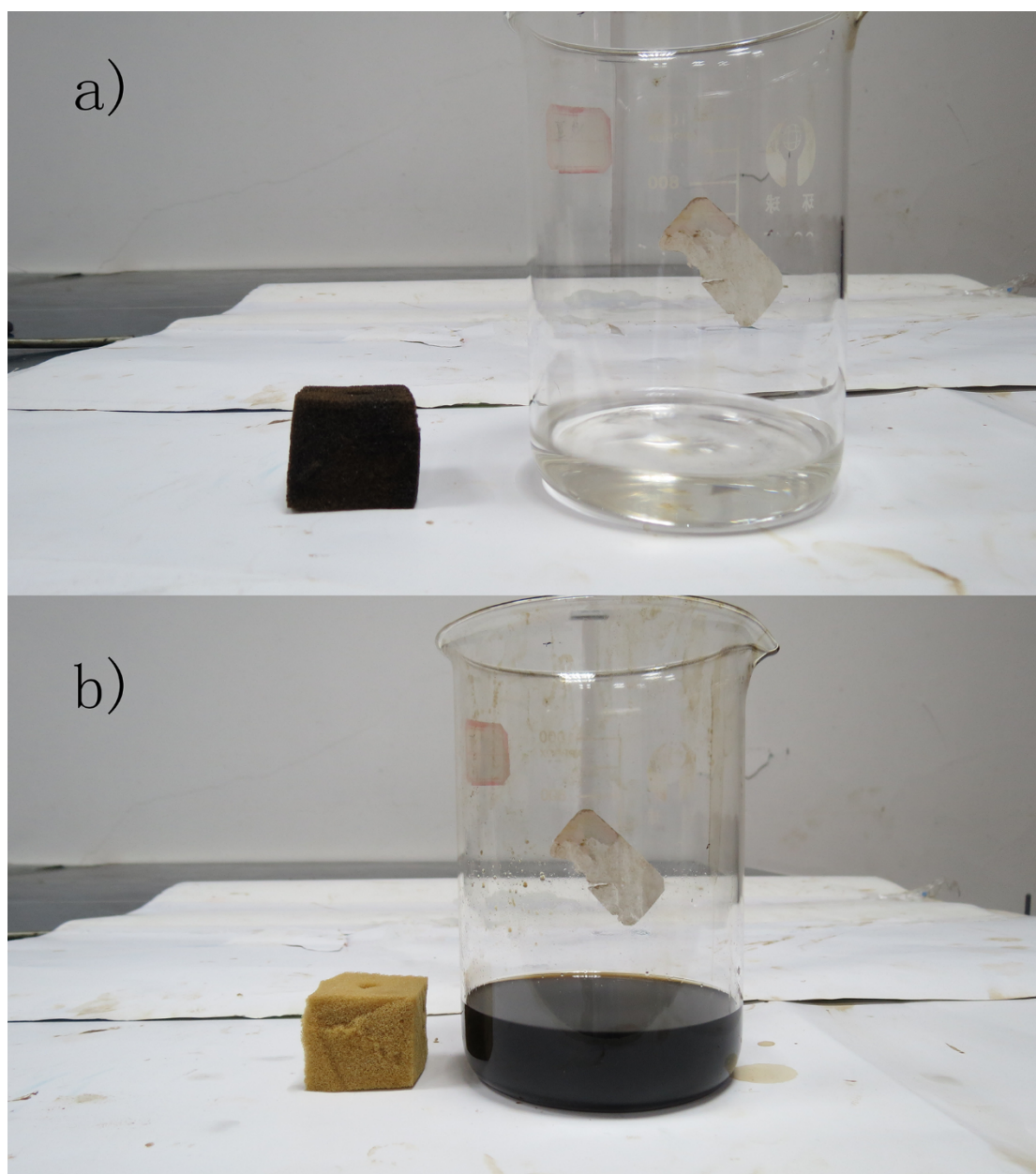


S 1: a) SEM images of PU sponges when fabricated in PP concentration of 0.25%, 0.5%, 0.75%, 1.0%, 1.25%; b) Water contact-angle images of sponge when fabricated in PP concentration of 0.25%, 0.5%, 0.75%, 1.0%, 1.25%.

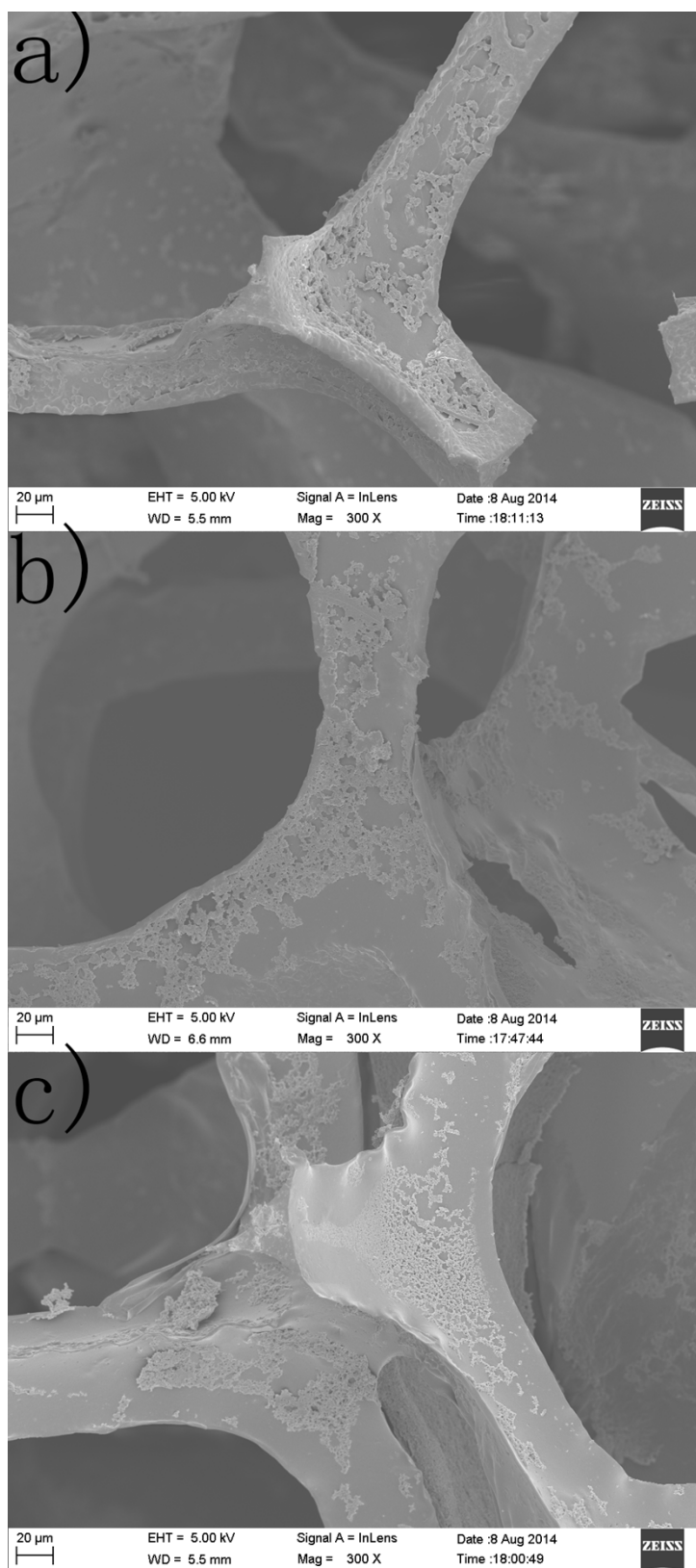
S 2: Separation of water and organic solvent (n-hexane as an example) by pump.

S 3: Oil collections with six sponges by pump.

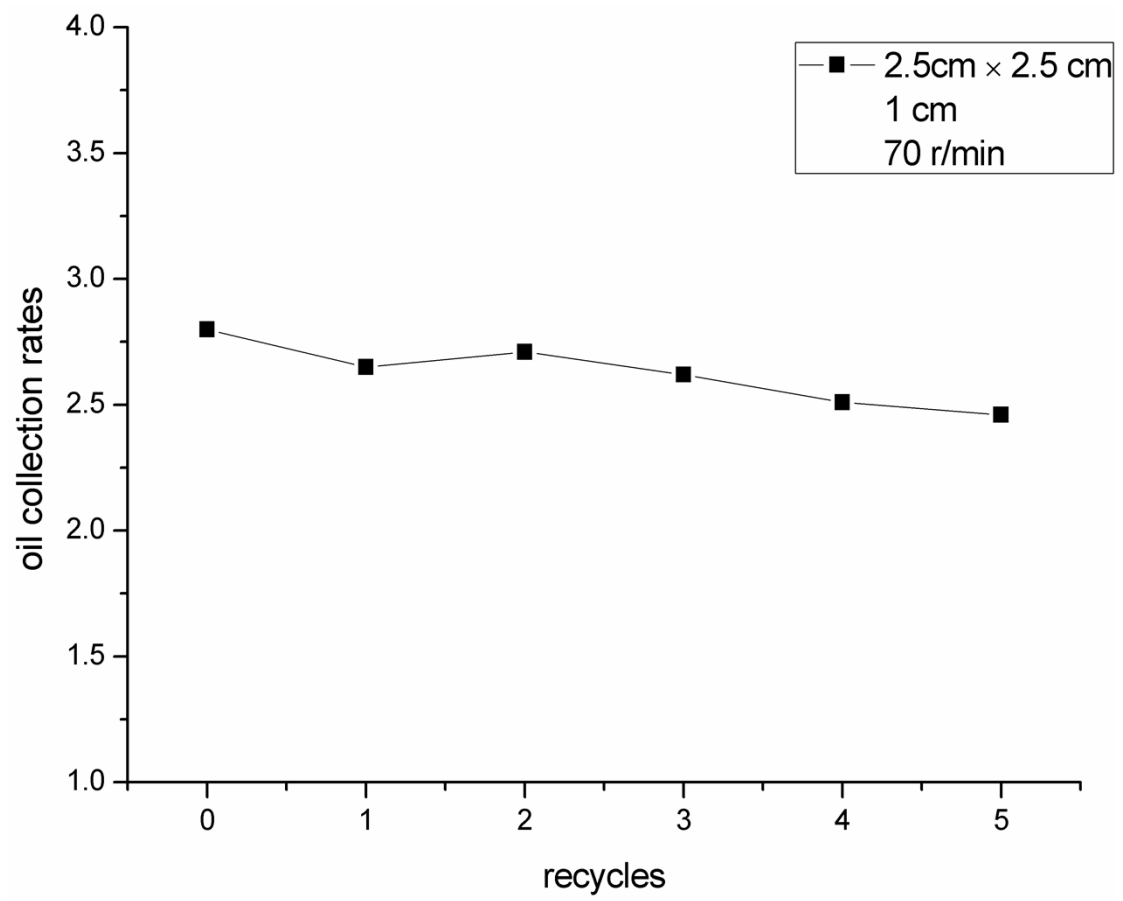
S 4: Separation of oil-water in simulated winds and waves.



S 5: Wash of the modified sponge after use.



S 6: a) SEM image of PU sponge before oil collection; b) SEM image of PU sponge after crude oil collection for 4 hours; c) SEM image of PU sponge after collection of toluene for 4 hours.



S 7: Oil collection rates for different recycles.