

Supporting information

Formation of well-ordered finger-like structures on pre-cast thin films

*Wei Sun and Fuqian Yang**

Materials Program, Department of Chemical and Materials Engineering

University of Kentucky, Lexington, KY 40506, United States.

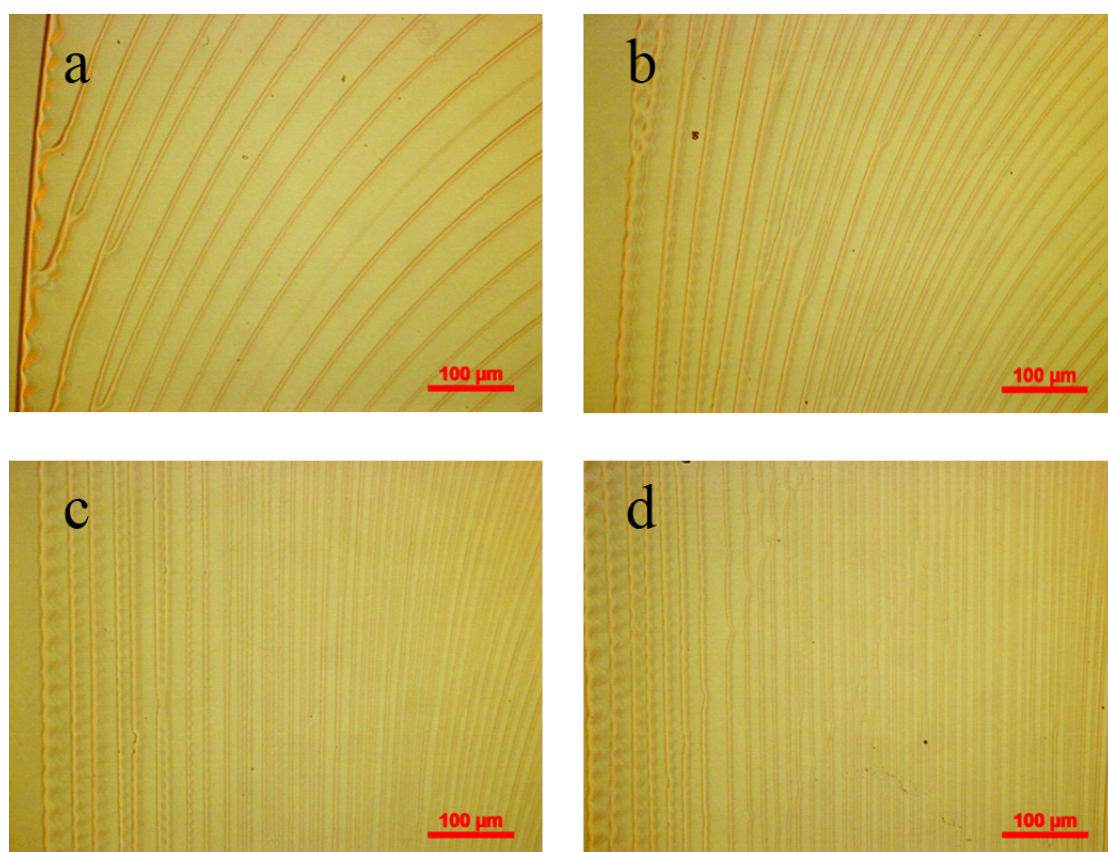


Figure S1. Optical images of the surface patterns formed near the outmost edge of a single finger for different normalized distances: (a) 0.125, (b) 0.25, (c) 0.5, and (d) 0.625 (droplet volume: 5 μL , tilt angle: 2.86°)

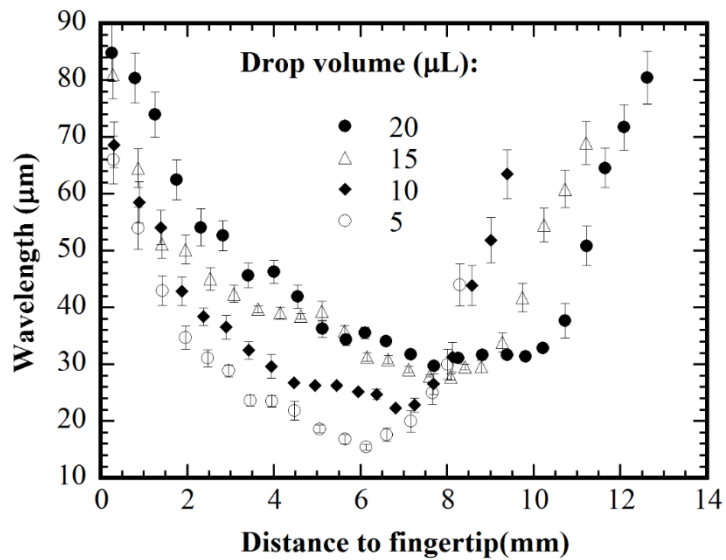


Figure S2. Variation of the wavelength with the distance to the fingertip along the symmetric axis for different droplet volumes (tilt angle: 2.86°)

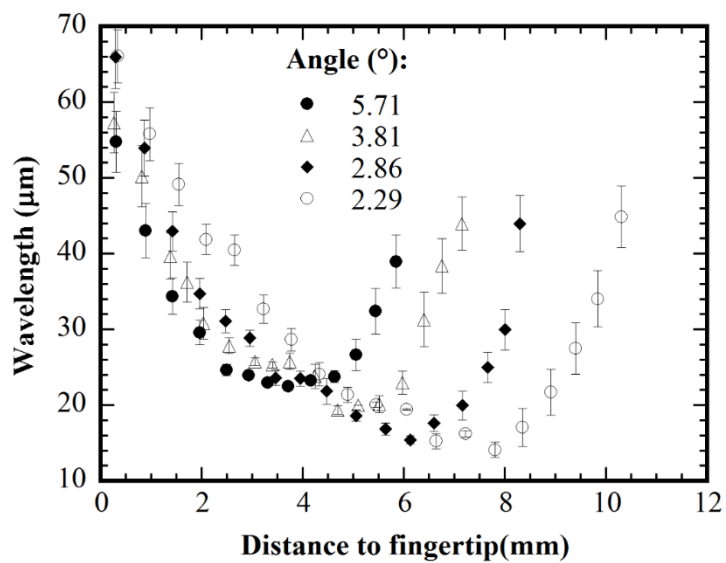


Figure S3. Variation of the wavelength with the distance to the fingertip along the symmetric axis for different tilt angles (droplet volume: $5 \mu\text{L}$)

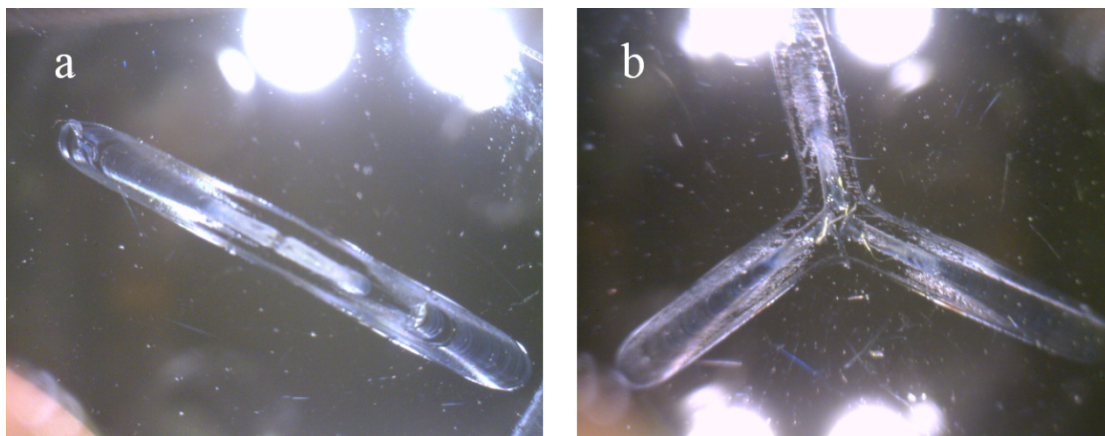


Figure S4. Surface patterns composed of (a) two fingers, and (b) three fingers (droplet volume: 10 μ L, tilt angle: 2.86 $^\circ$)