

Supporting Information

Room Temperature Curable Silica Ink

*Jobin Varghese, Kuzhichalil P Surendran and Mailadil T Sebastian**

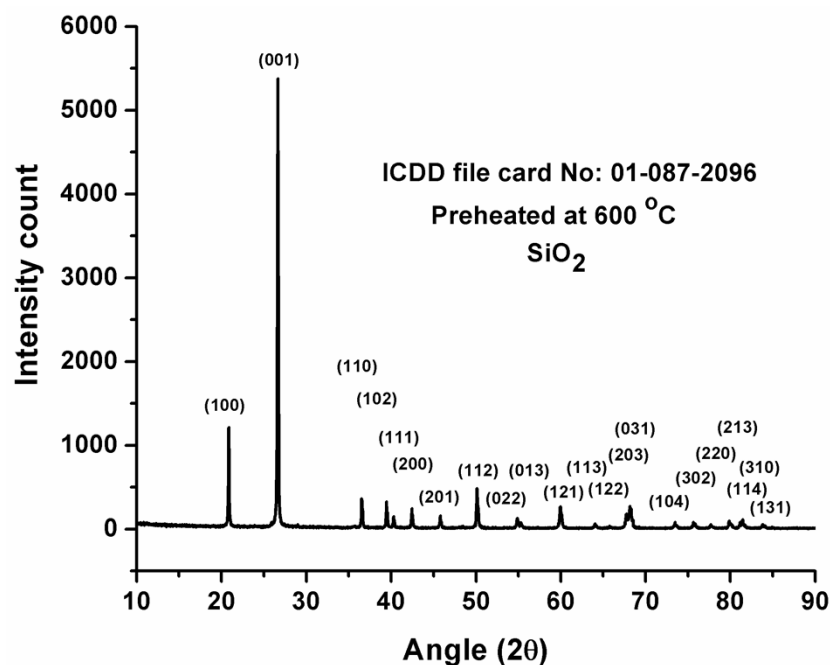


Figure S1. X-ray diffraction pattern of preheated SiO₂ powder.

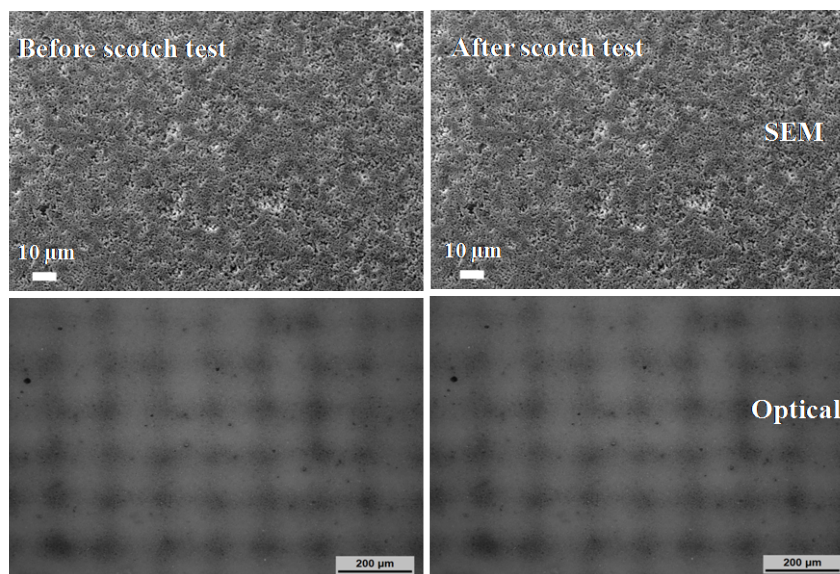


Figure S2. Optical and SEM images of screen printed silica ink before and after scotch test analysis.

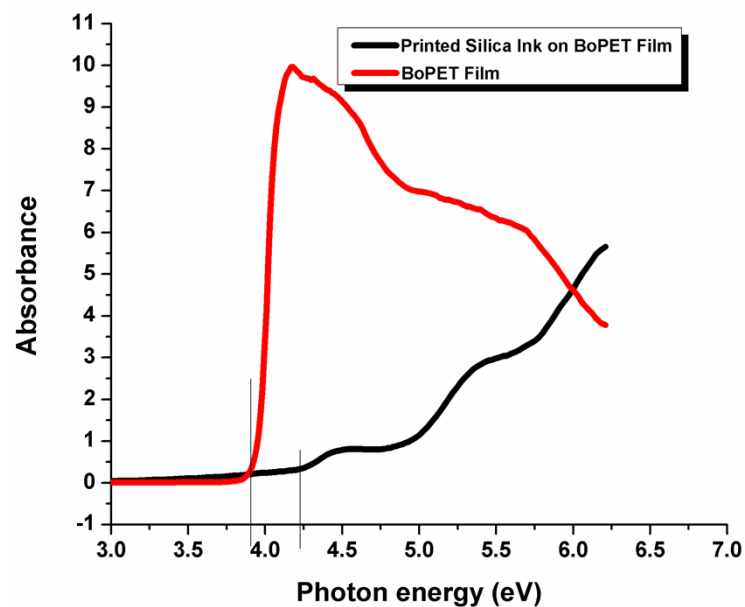


Figure S3. UV absorption spectrum of printed silica ink on BoPET fim and BoPET film.

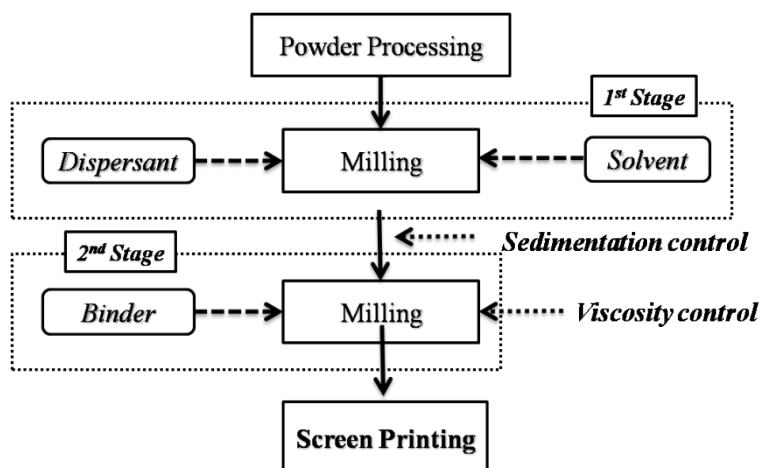


Figure S4. Flow chart of screen printing ink preparation.

Table S1. Comparison of surface roughness of screen printed silica ink on BoPET film and BoPET film.

Surfaces	Silica ink screen printed on BoPET film	BoPET film
Scan area	10X10 μm	10X10 μm
Average roughness (S_a)	370 nm	21 nm
Root mean square (S_q)	478 nm	32 nm
Surface skewness (S_{sk})	-0.089	0.416
Coefficient of kurtosis (S_{ku})	0.546	5.589