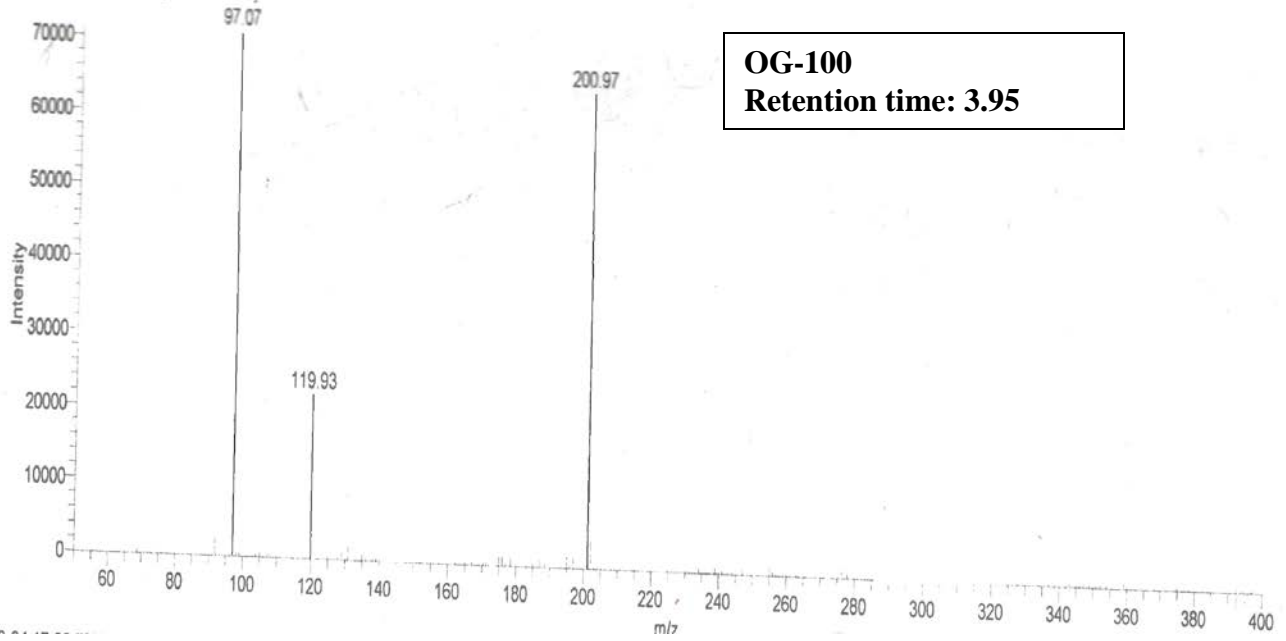


Chemical Structure of PNA

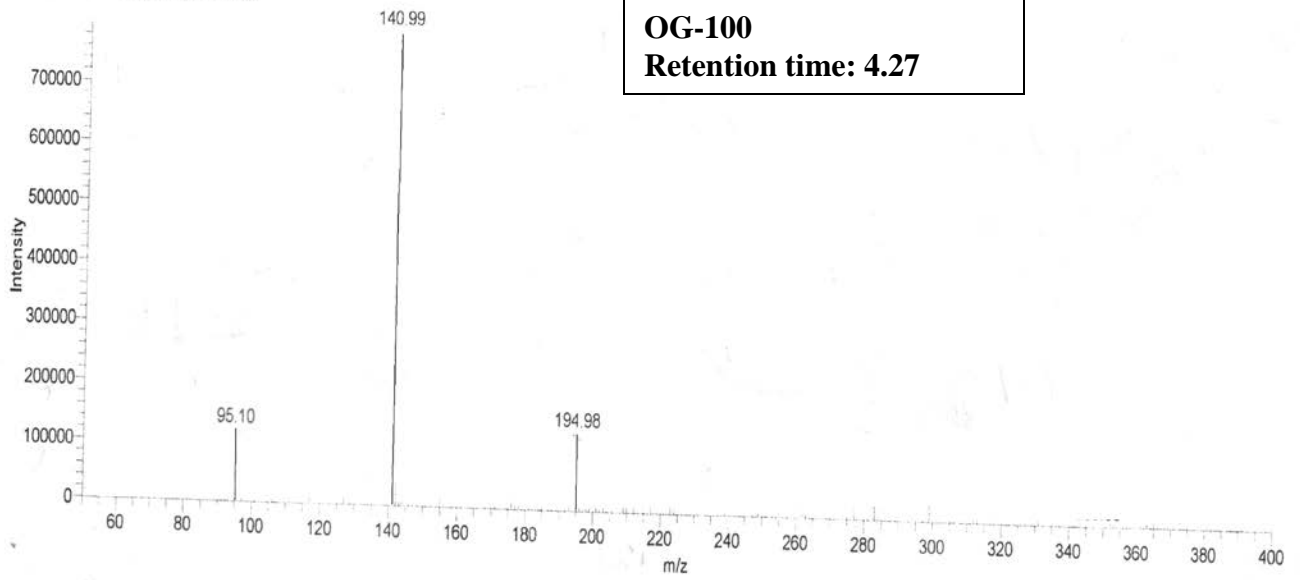
13-04-17-02 #560 RT: 3.95 AV: 1 SB: 526 0.00-3.71 NL: 7.11E4  
T: ITMS - c ESI Full ms [50.00-400.00]

Time (min)



**OG-100**  
**Retention time: 3.95**

13-04-17-02 #605 RT: 4.27 AV: 1 SB: 571 0.04-4.07 NL: 7.98E5  
T: ITMS - c ESI Full ms [50.00-400.00]

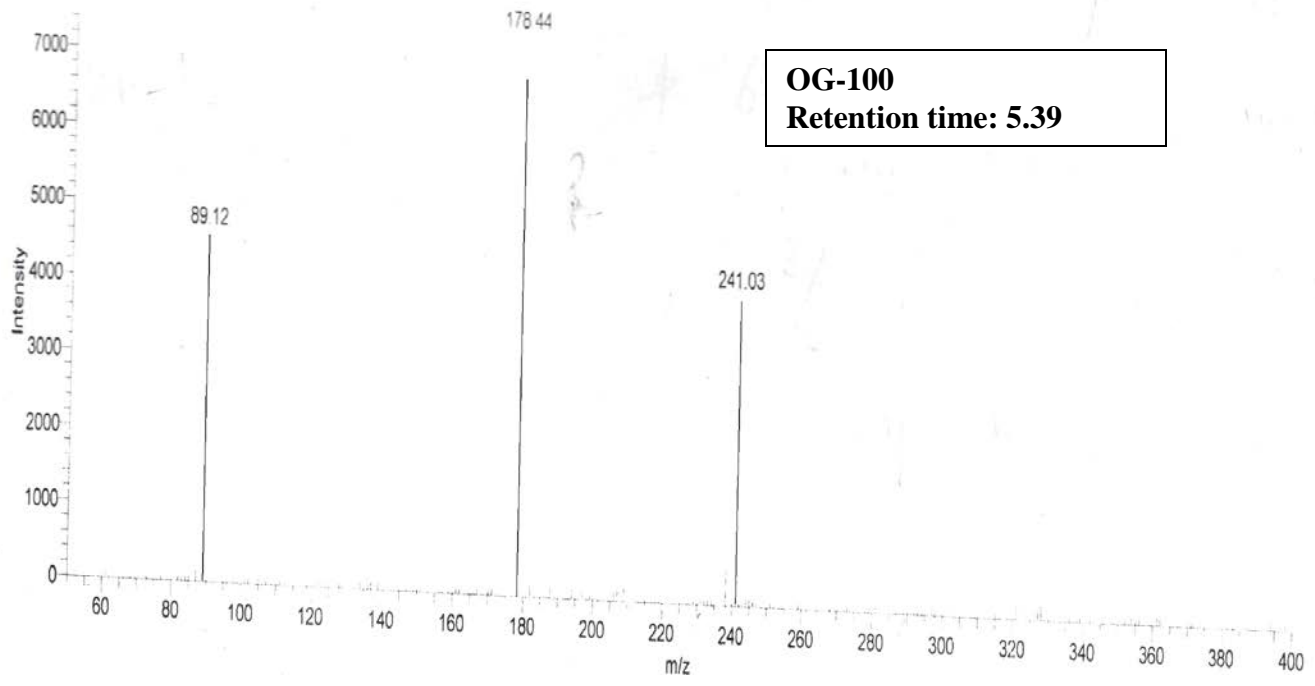


**OG-100**  
**Retention time: 4.27**

13-04-17-02 #763 RT: 5.39 AV: 1 SB: 731 0.00-5.16 NL: 7.41E3  
T: ITMS - c ESI Full ms [50.00-400.00]

Time (min)

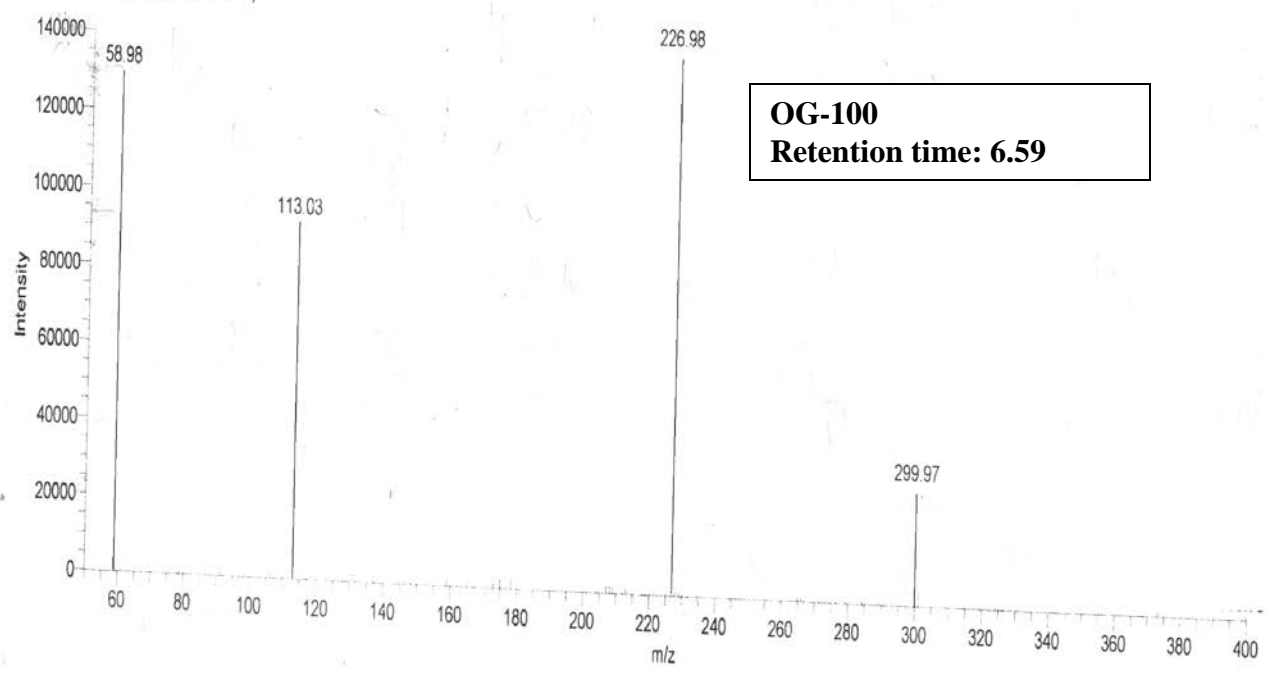
17 18 20



**OG-100**  
**Retention time: 5.39**

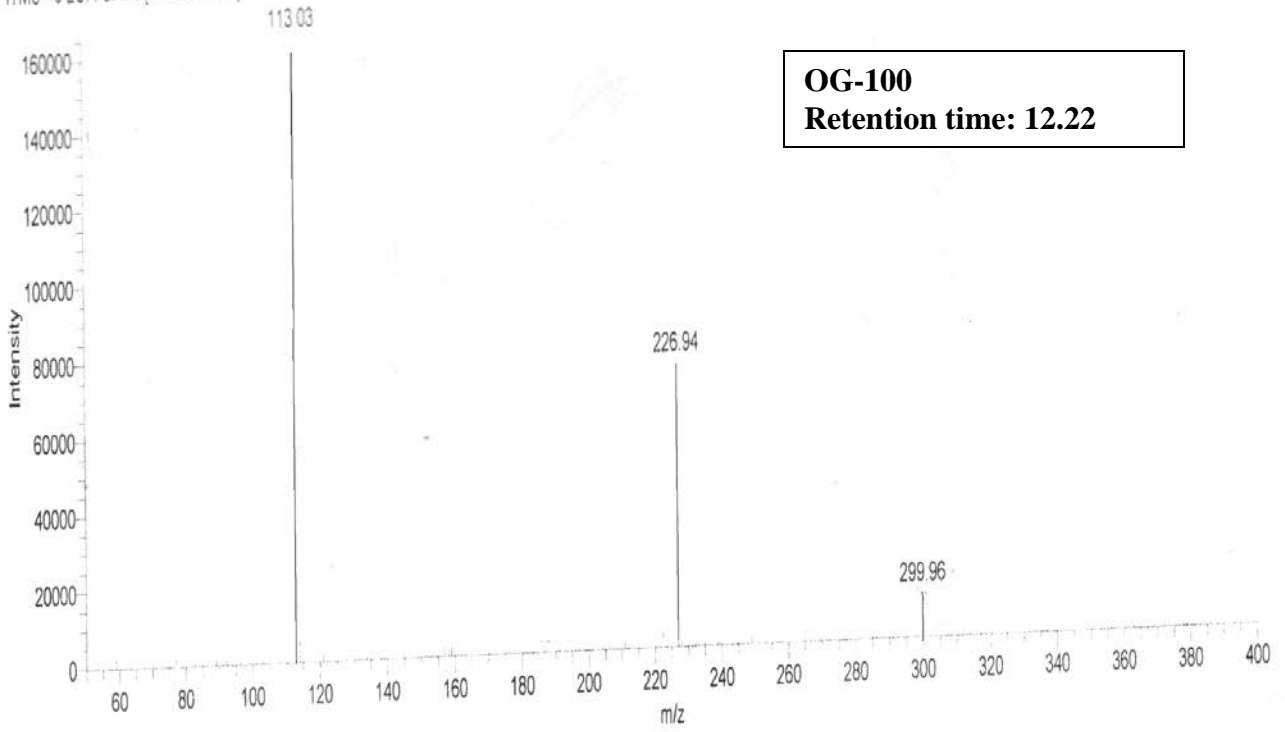
13-04-17-02 #933 RT: 6.59 AV: 1 SB: 869 0.08-6.21 NL: 1.41E5  
T: ITMS - c ESI Full ms [50.00-400.00]

m/z



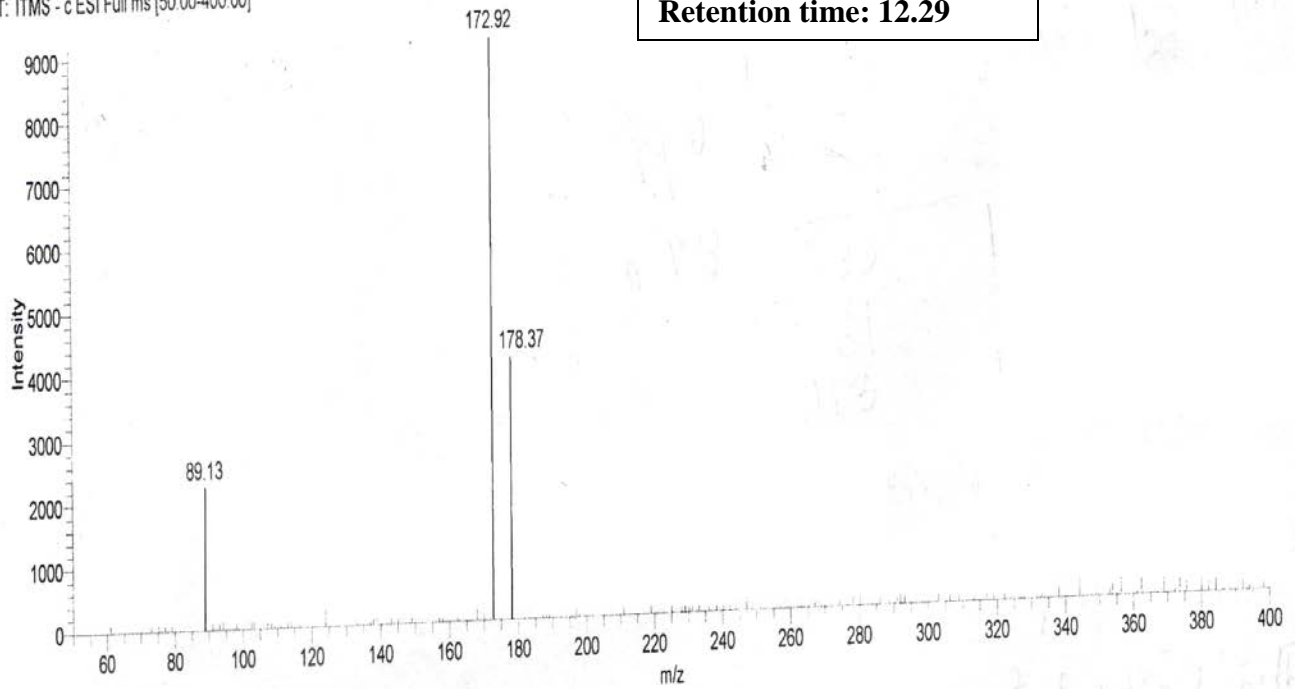
**OG-100**  
**Retention time: 6.59**

13-04-17-02 #1731 RT: 12.22 AV: 1 SB: 1555 0.03-11.01 NL: 1.65E5  
T: ITMS - c ESI Full ms [50.00-400.00]



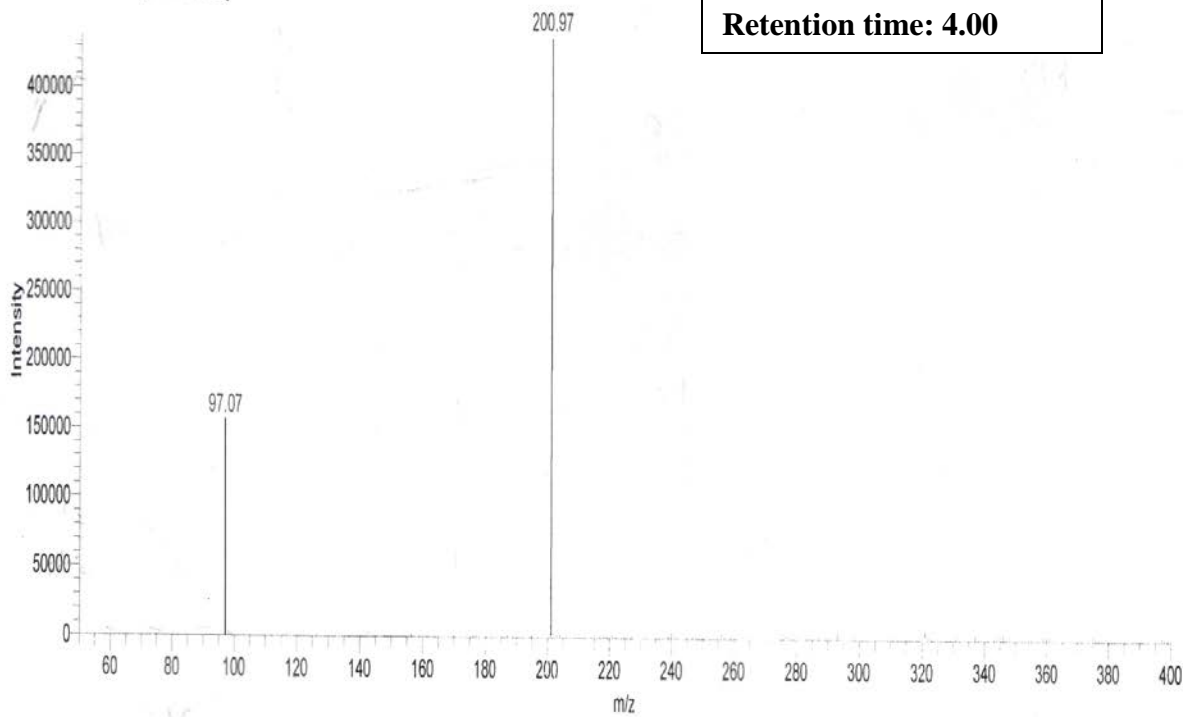
**OG-100**  
**Retention time: 12.22**

13-04-17-02 #1741 RT: 12.29 AV: 1 SB: 1341 0.03-11.01 NL: 1.65E5  
T: ITMS - c ESI Full ms [50.00-400.00]

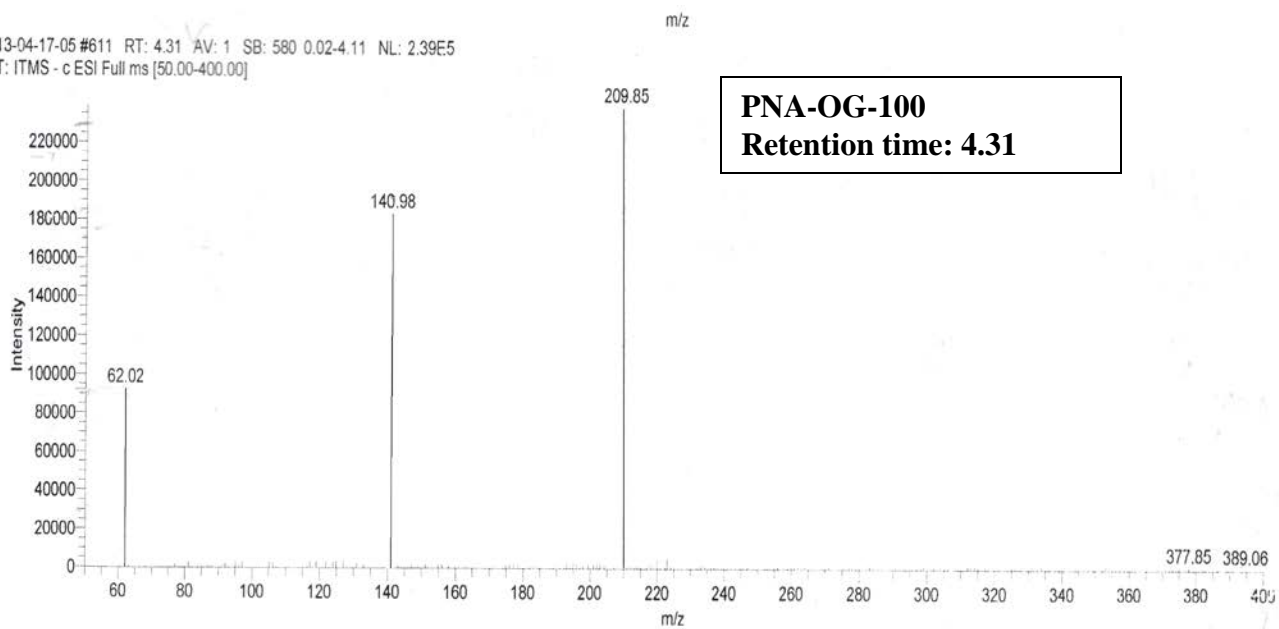


**OG-100**  
**Retention time: 12.29**

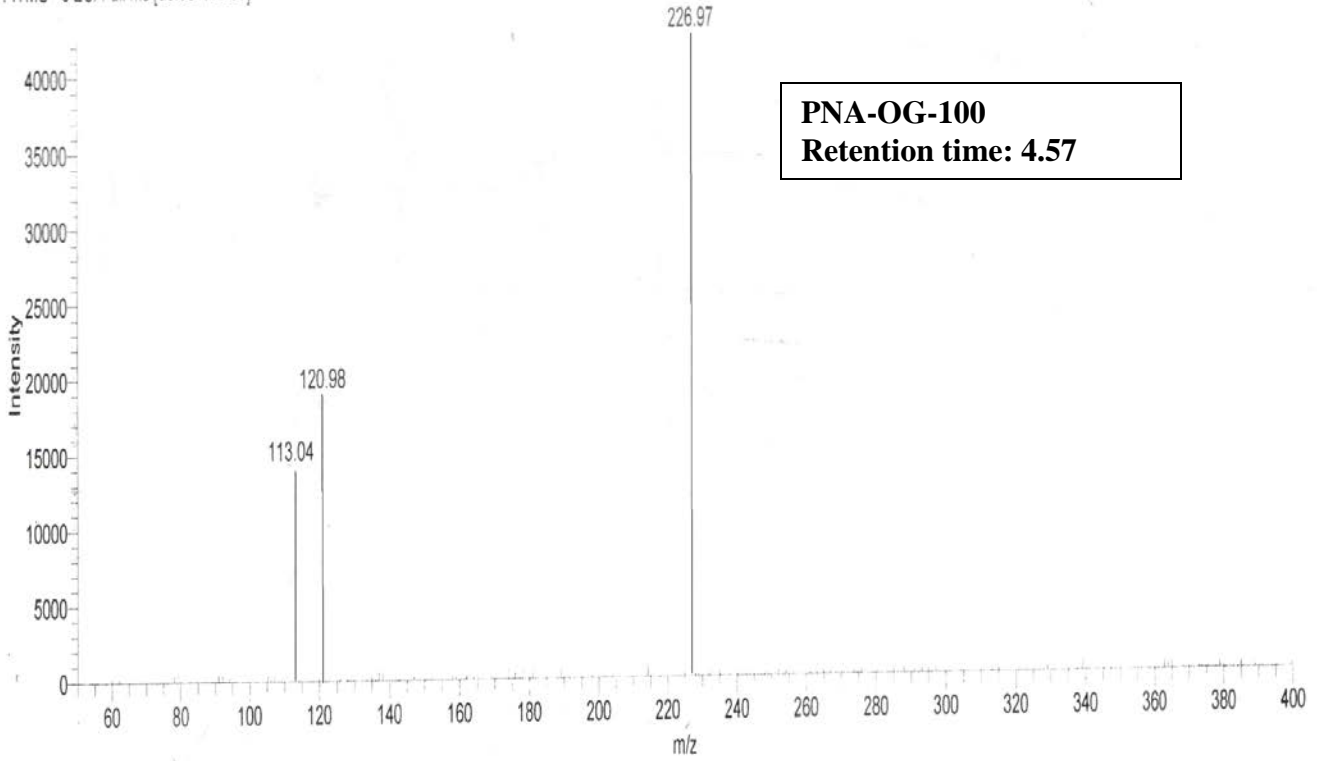
13-04-17-05 #567 RT: 4.00 AV: 1 SB: 486 0.16-3.58 NL: 4.39E5  
T: ITMS - c ESI Full ms [50.00-400.00]



13-04-17-05 #611 RT: 4.31 AV: 1 SB: 580 0.02-4.11 NL: 2.39E5  
T: ITMS - c ESI Full ms [50.00-400.00]

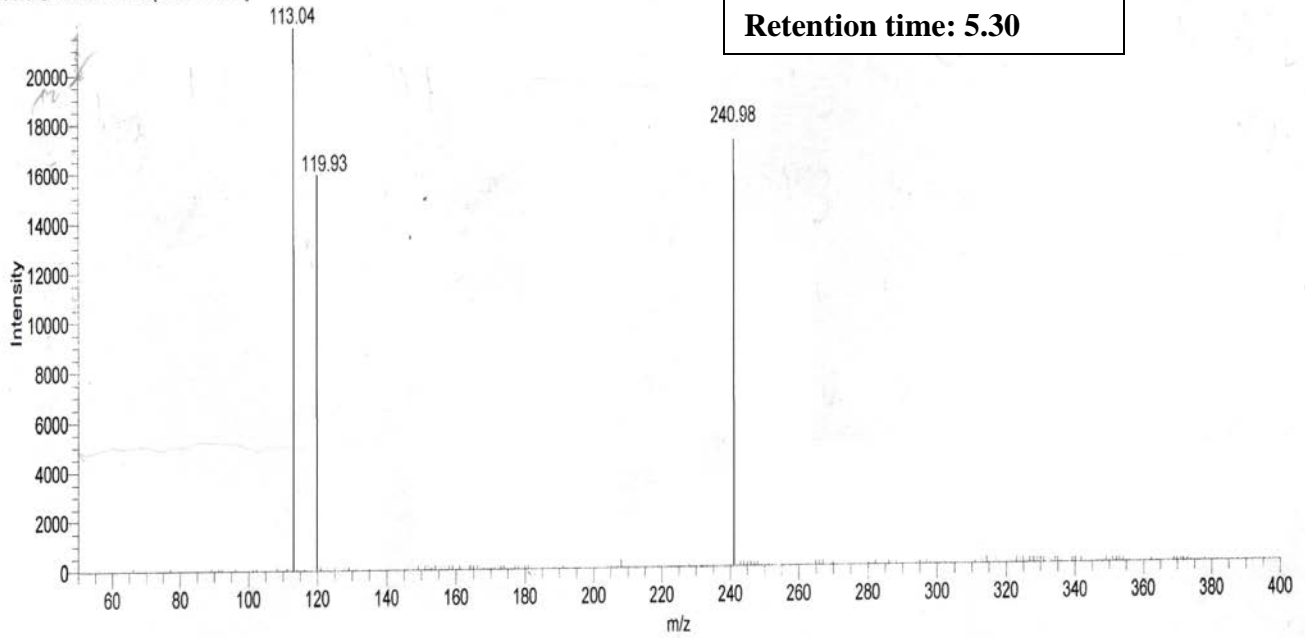


13-04-17-05 #648 RT: 4.57 AV: 1 SB: 585 0.11-4.23 NL: 4.24E4  
T: ITMS - c ESI Full ms [50.00-400.00]



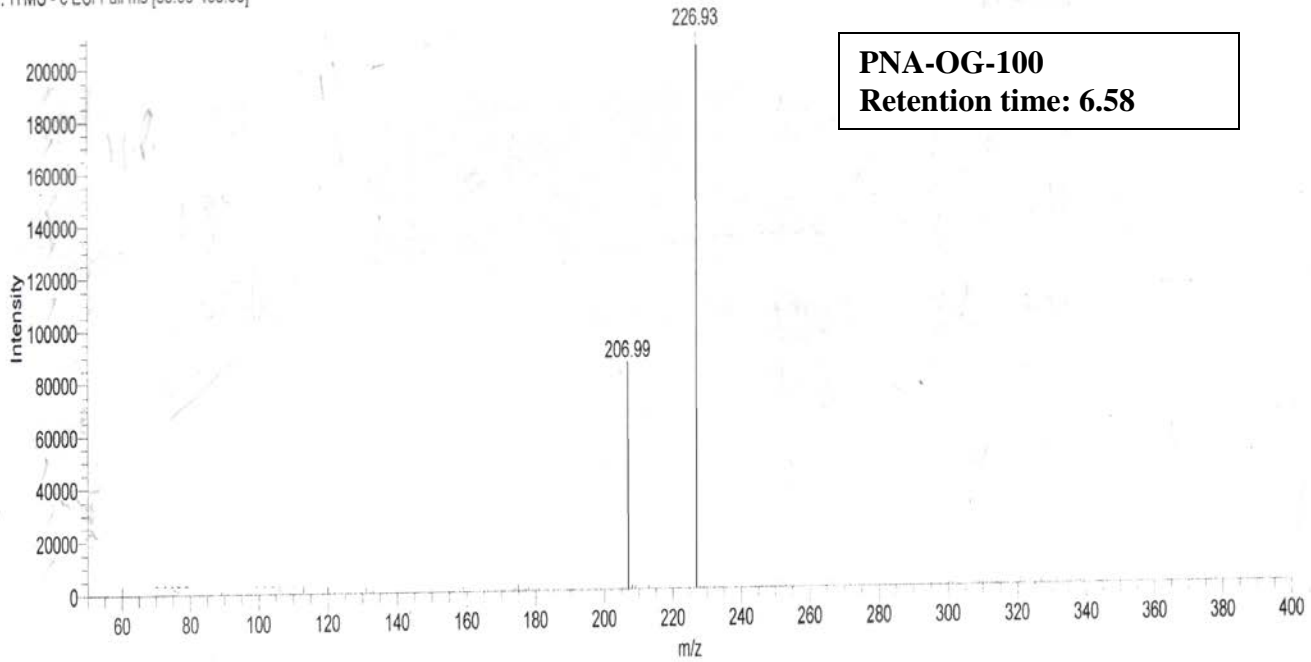
**PNA-OG-100**  
**Retention time: 4.57**

13-04-17-05 #751 RT: 5.30 AV: 1 SB: 674 0.11-4.86 NL: 2.18E4  
T: ITMS - c ESI Full ms [50.00-400.00]

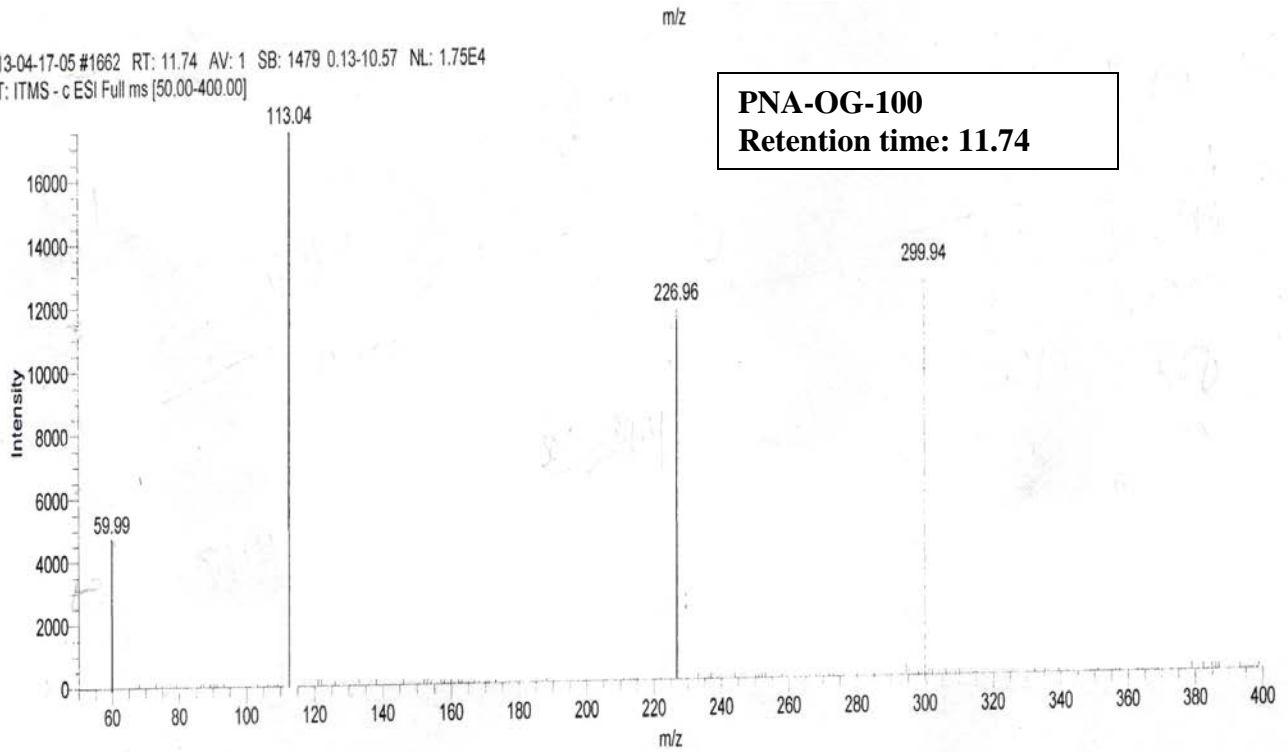


**PNA-OG-100**  
**Retention time: 5.30**

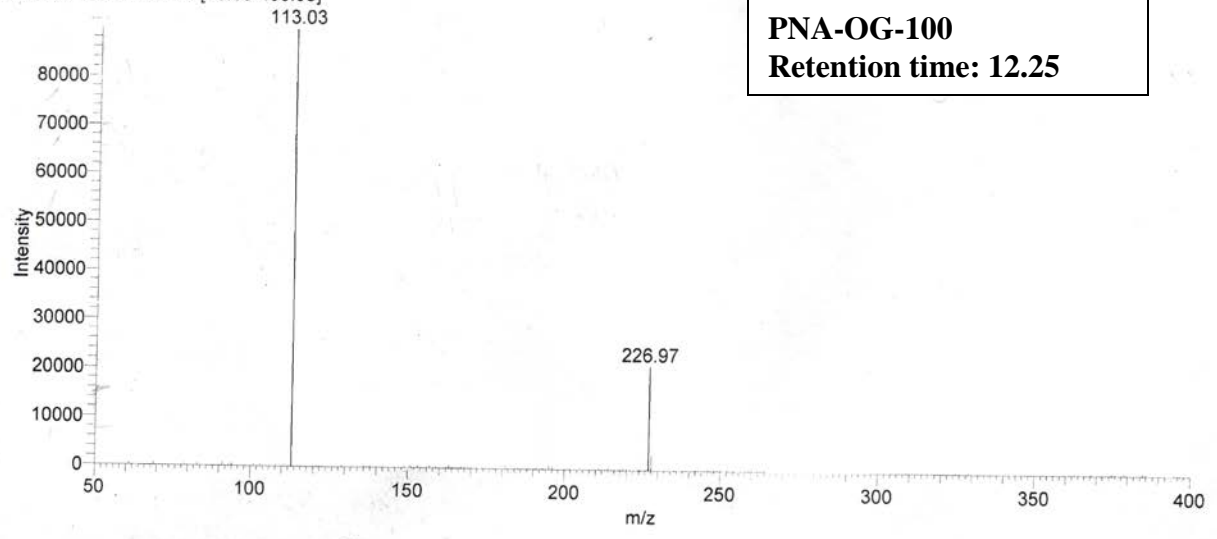
13-04-17-05 #932 RT: 6.58 AV: 1 SB: 846 0.03-6.00 NL: 2.12E5  
T: ITMS - c ESI Full ms [50.00-400.00]



13-04-17-05 #1662 RT: 11.74 AV: 1 SB: 1479 0.13-10.57 NL: 1.75E4  
T: ITMS - c ESI Full ms [50.00-400.00]



13-04-17-05 #1734 RT: 12.25 AV: 1 SB: 1619 0.13-11.56 NL: 8.99E4  
T: ITMS - c ESI Full ms [50.00-400.00]



**PNA-OG-100**  
**Retention time: 12.25**