

Supporting Information

Table A1. *In vitro* NNF data for the concentrations of various elements in TSB medium.

| Element | Slope | Intercept | Regression coefficient |
|---------|-------|-----------|------------------------|
| Cd | 0.86 | 0.31 | 0.9990 |
| Co | 0.74 | 2.10 | 0.9991 |
| Cu | 1.24 | 4.42 | 0.9977 |
| Sr | 0.84 | 12.28 | 0.9983 |
| Pb | 0.65 | 0.91 | 0.9952 |

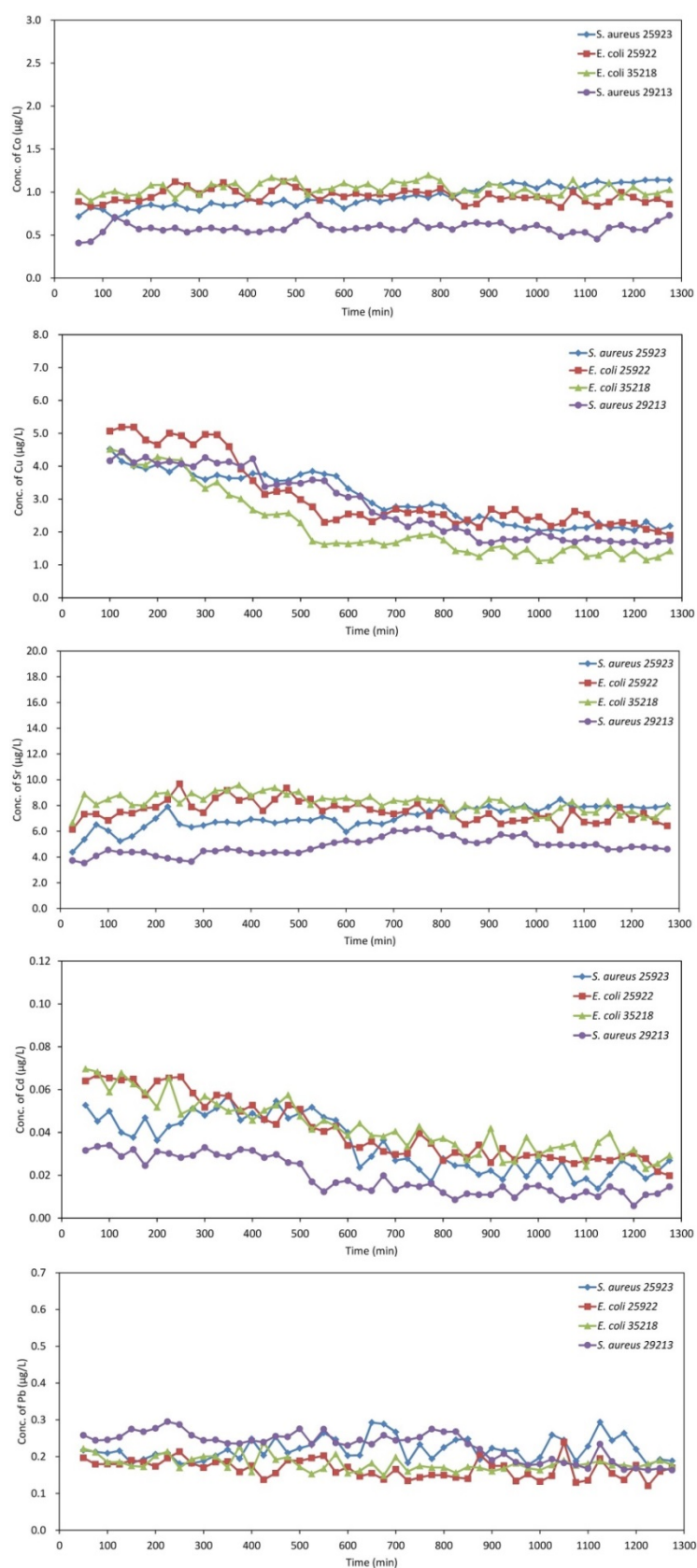


Figure A1. Variations in concentrations of metal ions during bacterial growth in inoculated TSB solutions, as determined using the proposed MD/ICP-MS system.