

Rh(III)-Catalyzed tandem oxidative olefination-cyclization of aryl sulfonamides

Qiuping Ding,* Tong Liu, Qiang Zheng, Yadong Zhang, Ling Long, and Yiyuan Peng*

** Key Laboratory of Small Functional Organic Molecule, Ministry of Education and Jiangxi's Key Laboratory of Green Chemistry, Jiangxi Normal University, Nanchang, Jiangxi 330022, China.*

E-mail: dqpxnu@gmail.com; yypeng@jxnu.edu.cn

Supporting Information

1. ¹H and ¹³C NMR spectra of compounds **3** (P2-P21)

liutong
lt-33-4

8.0295
7.9898
7.5652
7.3548

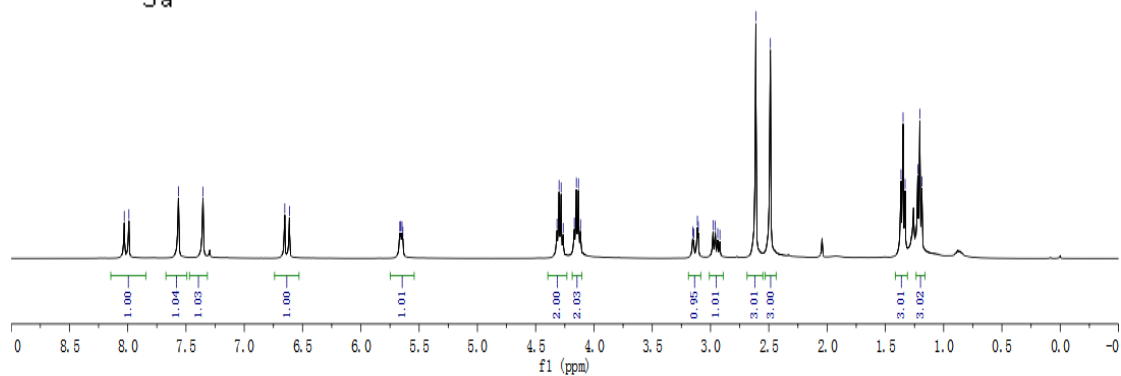
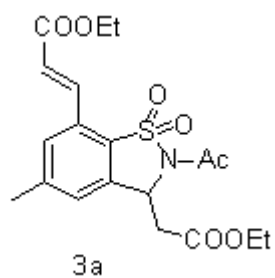
6.6526
6.6128

5.6654
5.6377
5.6395

4.3170
4.2993
4.2838
4.1685
4.1507
4.1150

3.1527
3.1326
3.1044
2.9783
2.9382
2.9192
2.8847

3.0458
1.3480
1.3303
1.3043
1.1865



169.54
167.33
165.41

145.61

135.22
135.65
130.87
129.56
128.80
126.06
124.51

77.40
77.08
76.77

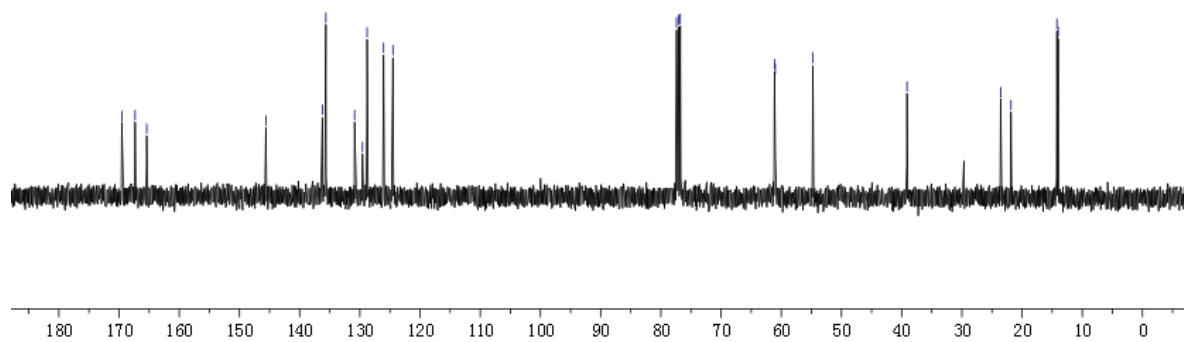
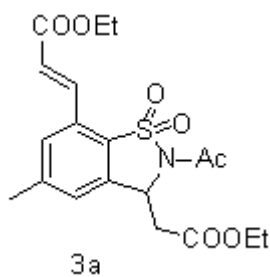
61.12
61.00

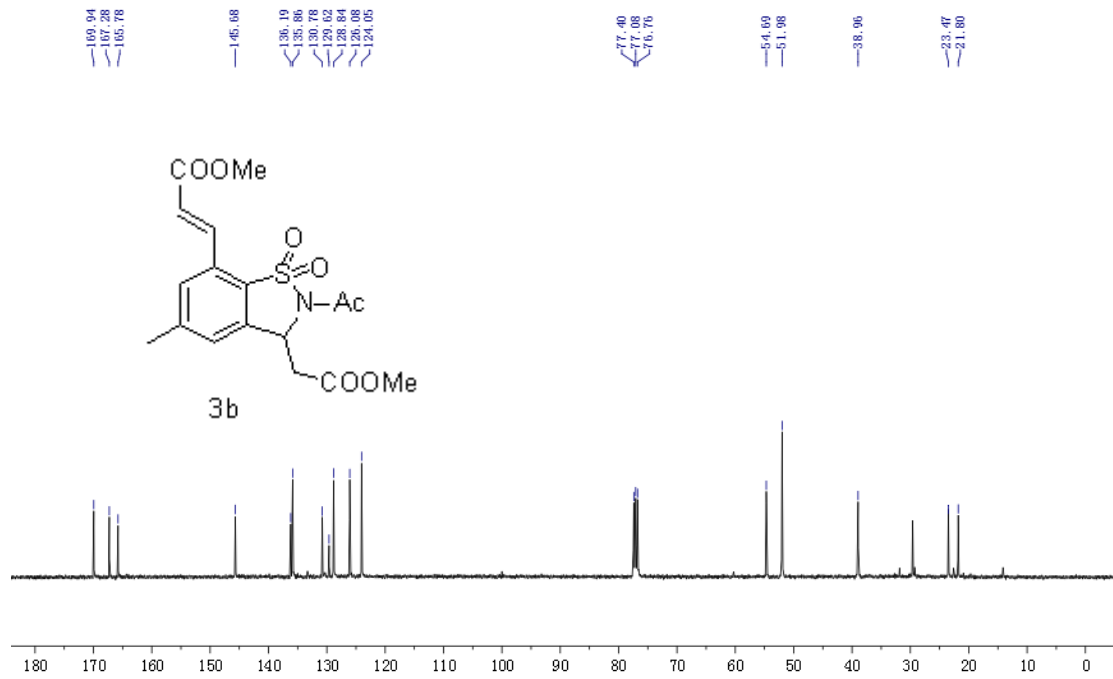
54.75

39.12

23.55
21.84

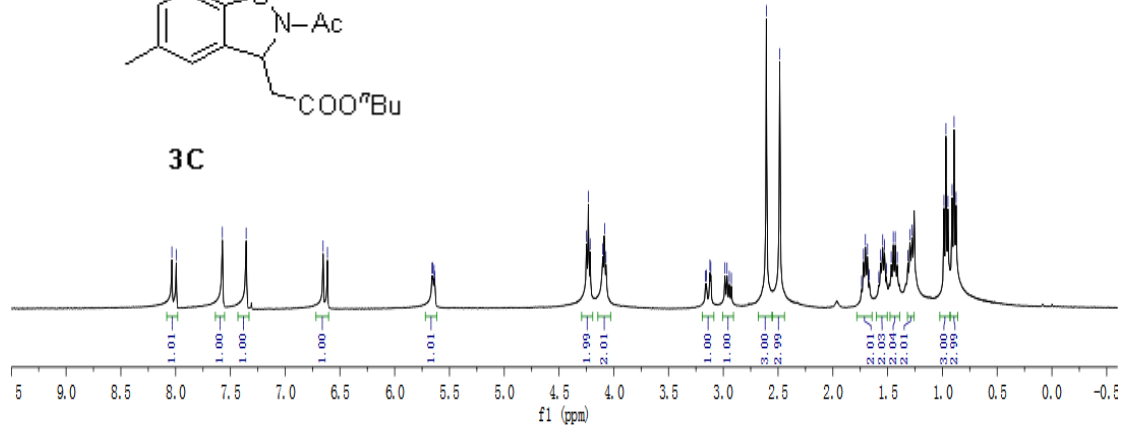
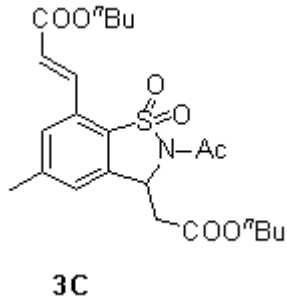
14.22
14.00



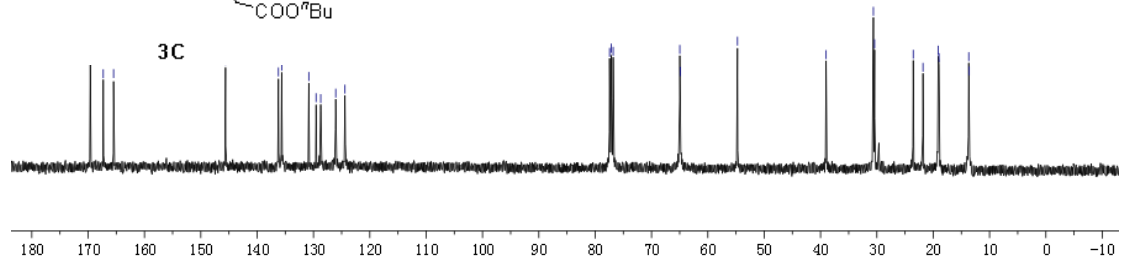
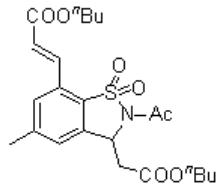


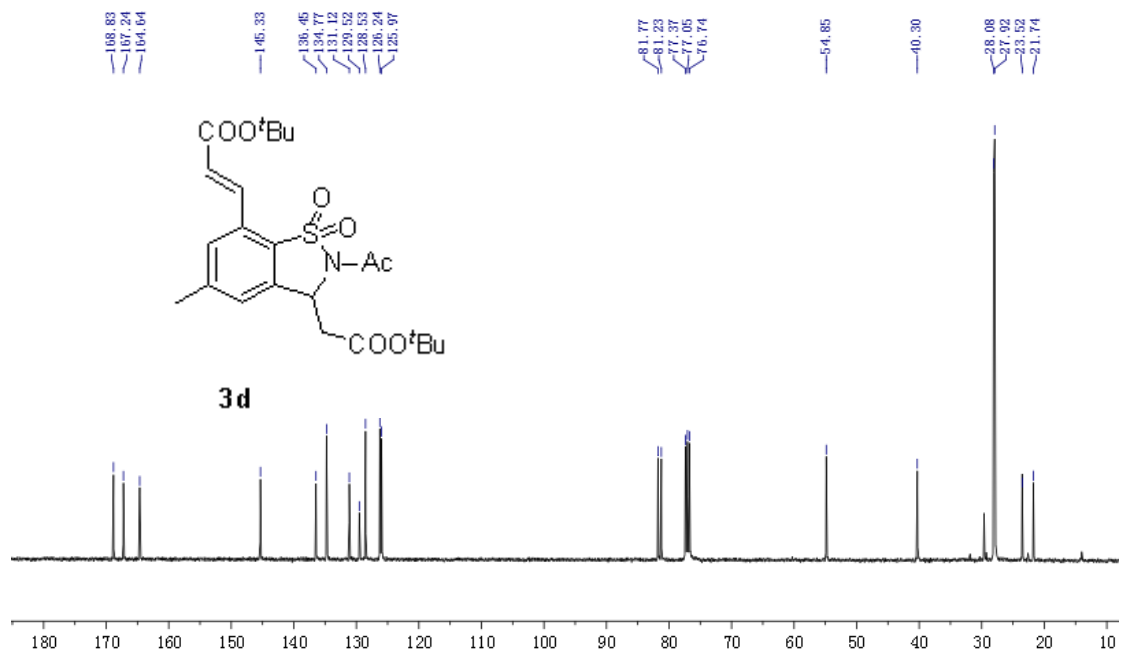
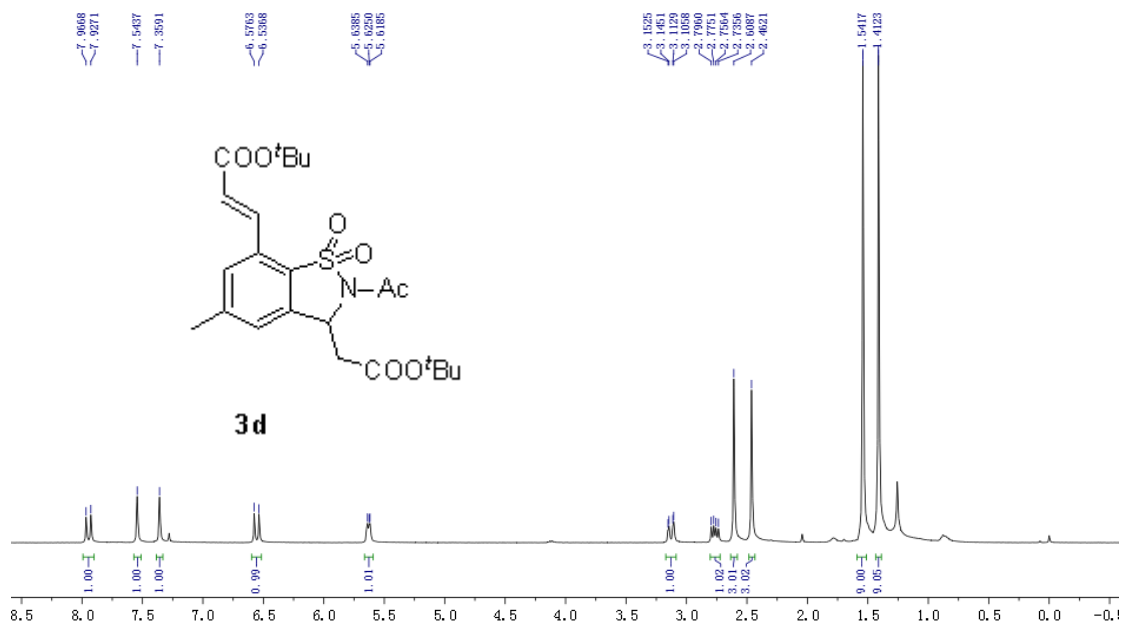
liutang
lt-42-1

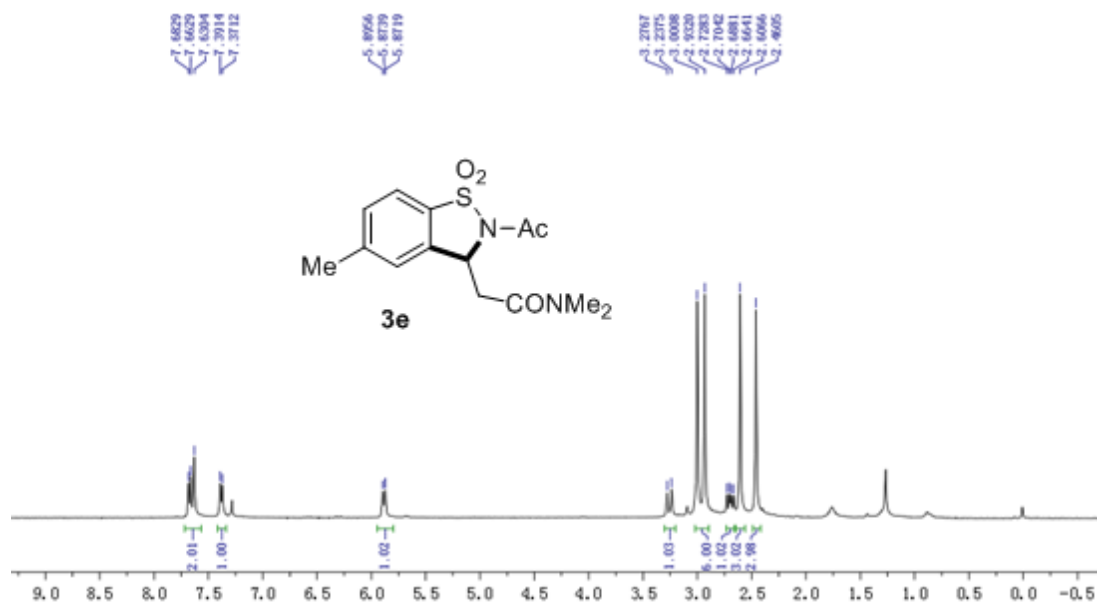
8.0343
7.9946
7.5735
7.3559
6.6537
6.6140
5.6592
5.6519
5.6332
4.2489
4.2329
4.2155
4.1000
4.0716
3.1824
3.1541
3.1224
3.0142
2.9653
2.9455
2.6072
2.4851
1.7207
1.6830
1.6630
1.5642
1.5463
1.4672
1.4483
1.4114
1.3157
1.2849
0.9877
0.9492
0.9116
0.8748

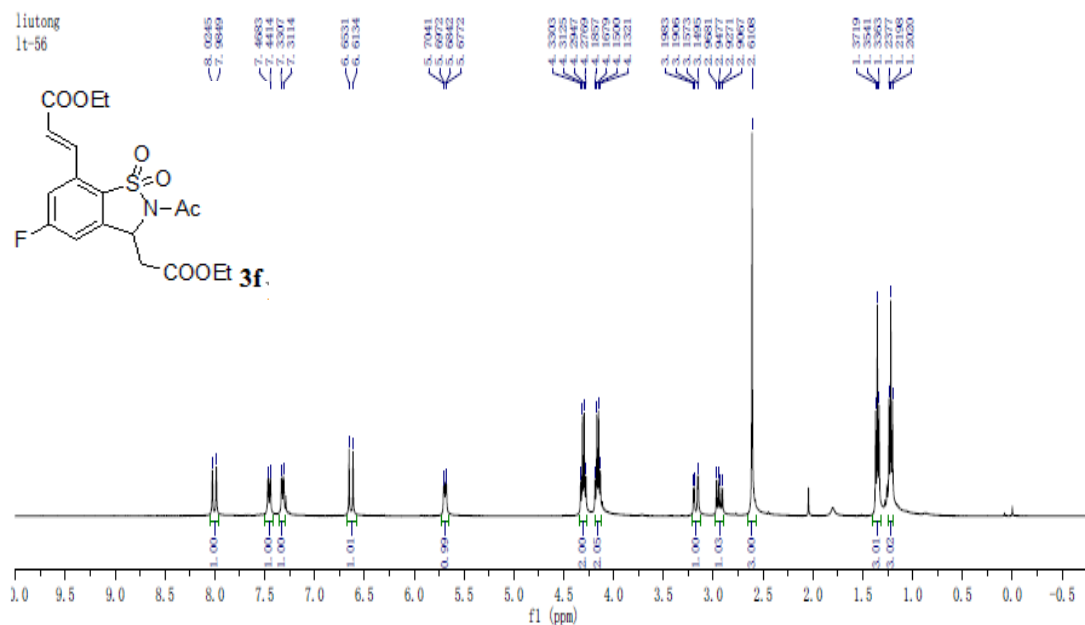
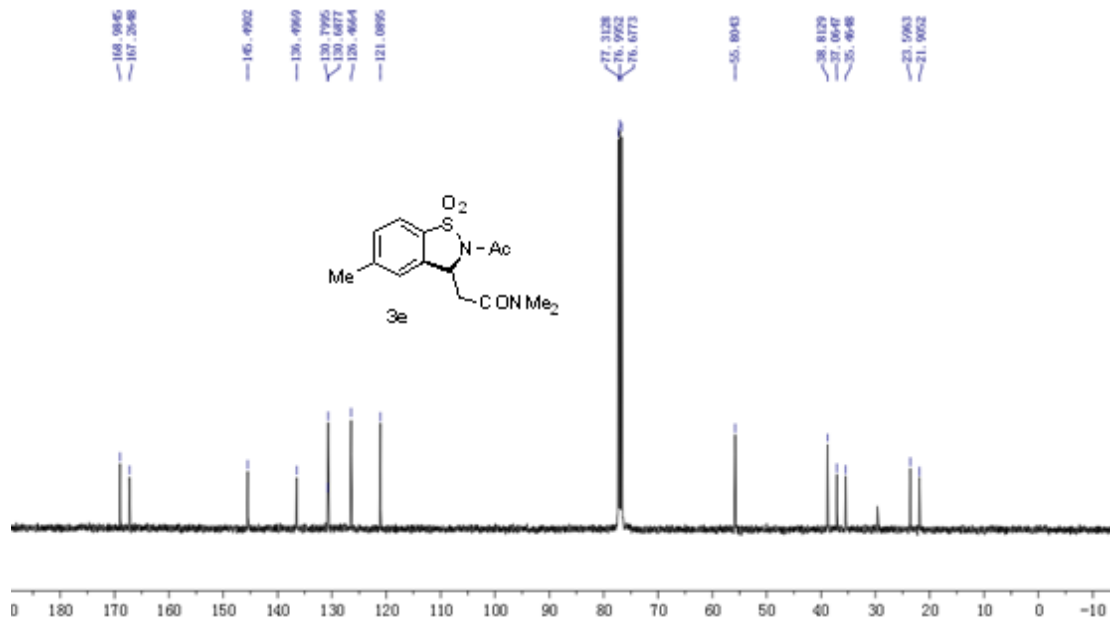


169.6171
167.3105
165.4829
145.6080
136.2199
135.6464
130.8298
128.7597
126.7621
124.4116
77.4421
77.1242
76.8063
64.9785
64.8763
54.7483
39.0126
30.6183
30.4074
22.5485
21.8174
19.109
18.0725
13.6926
13.6073

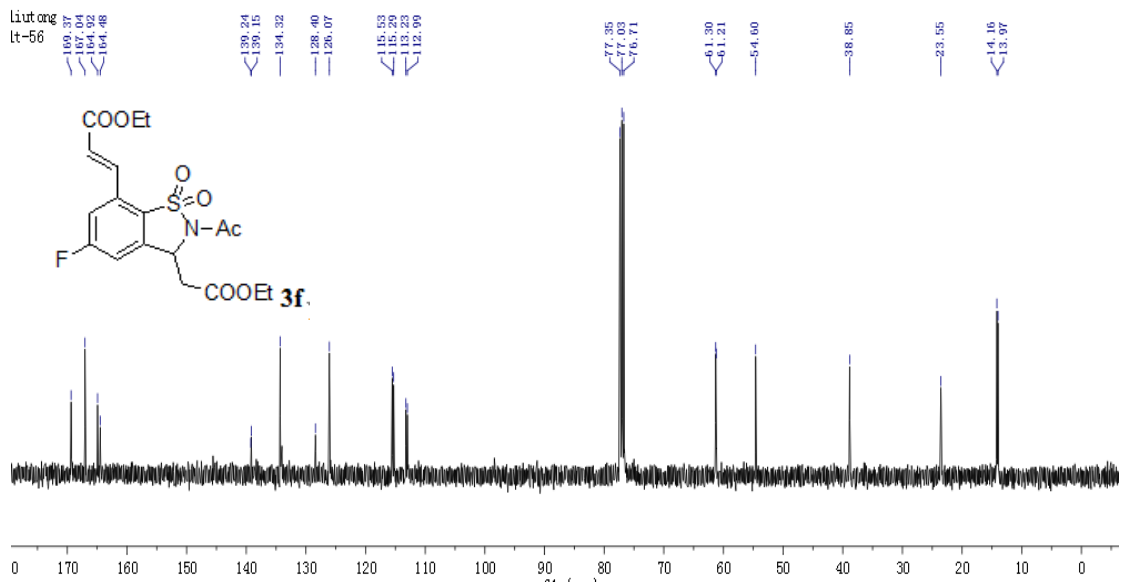


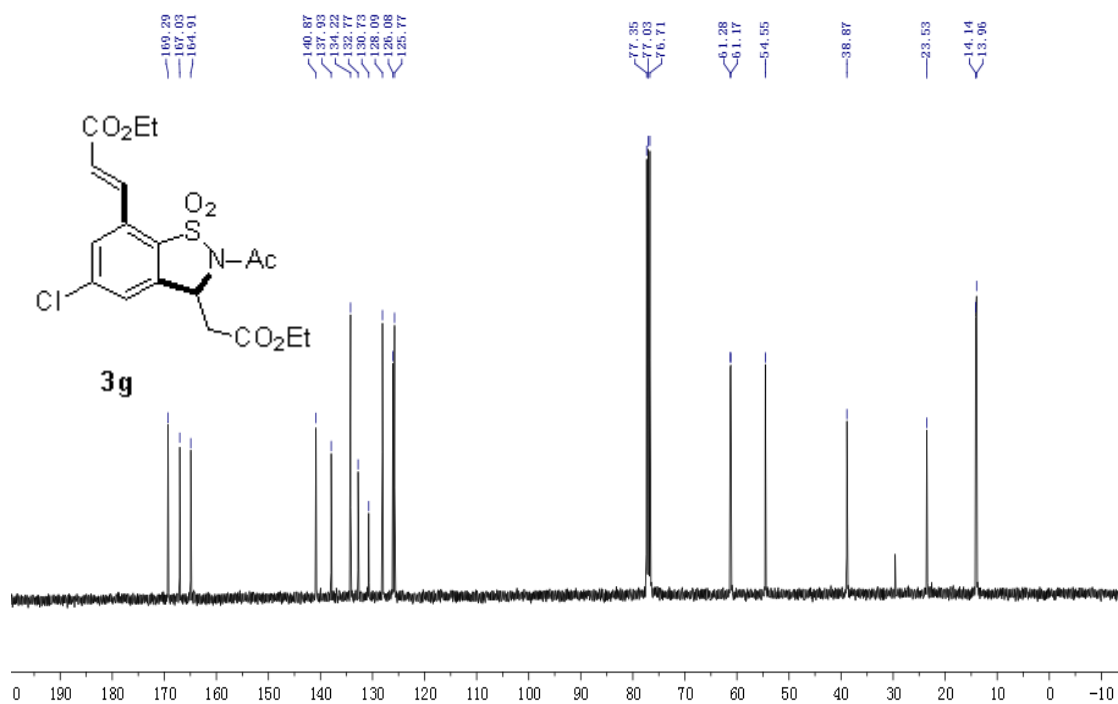
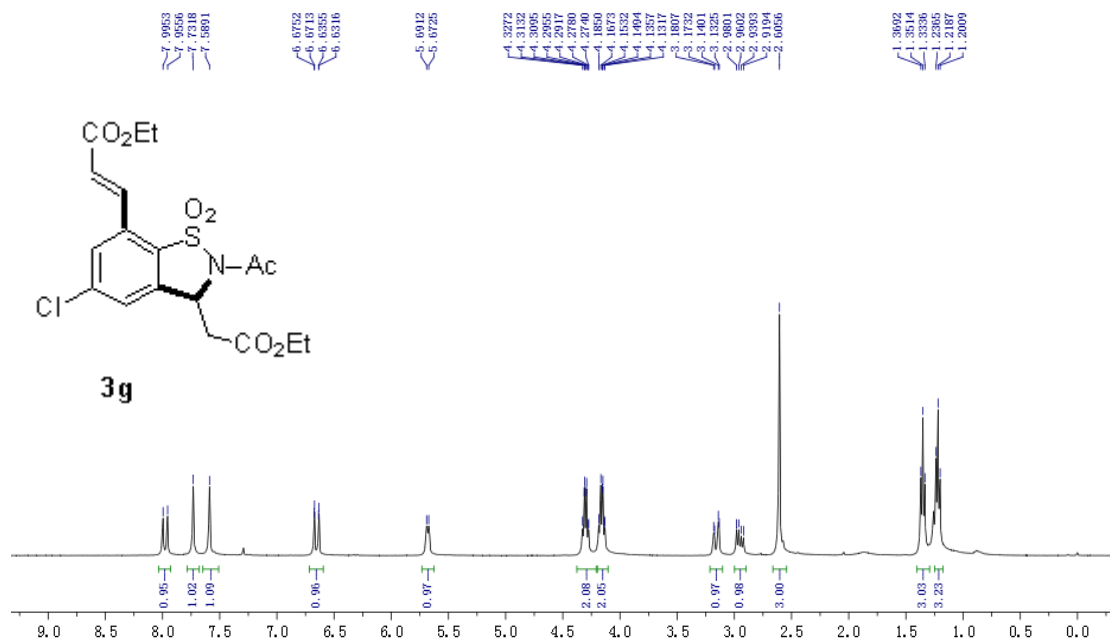


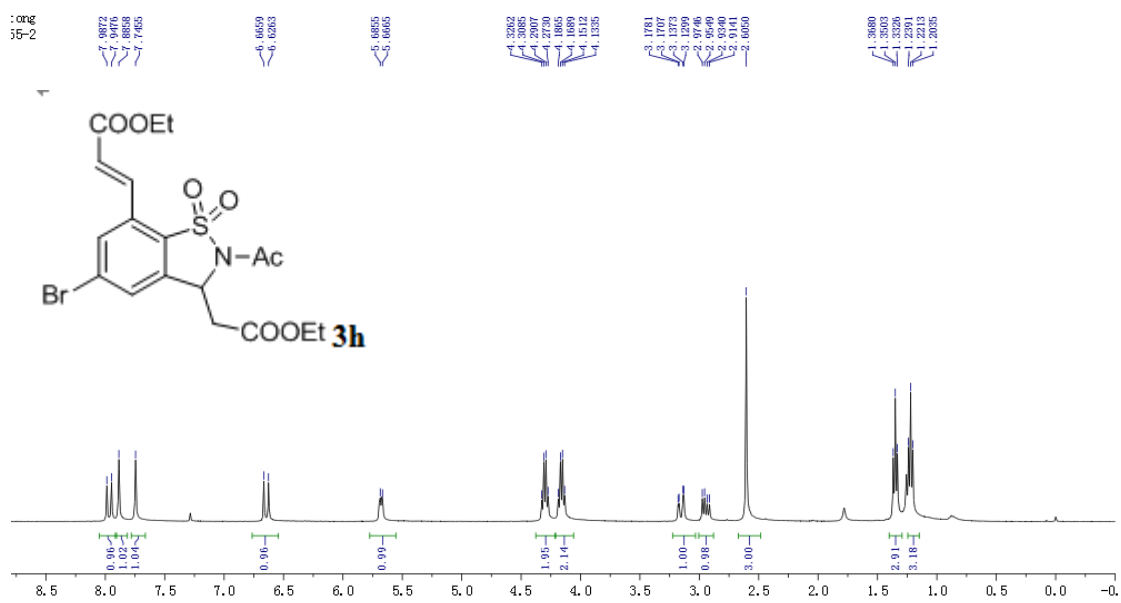


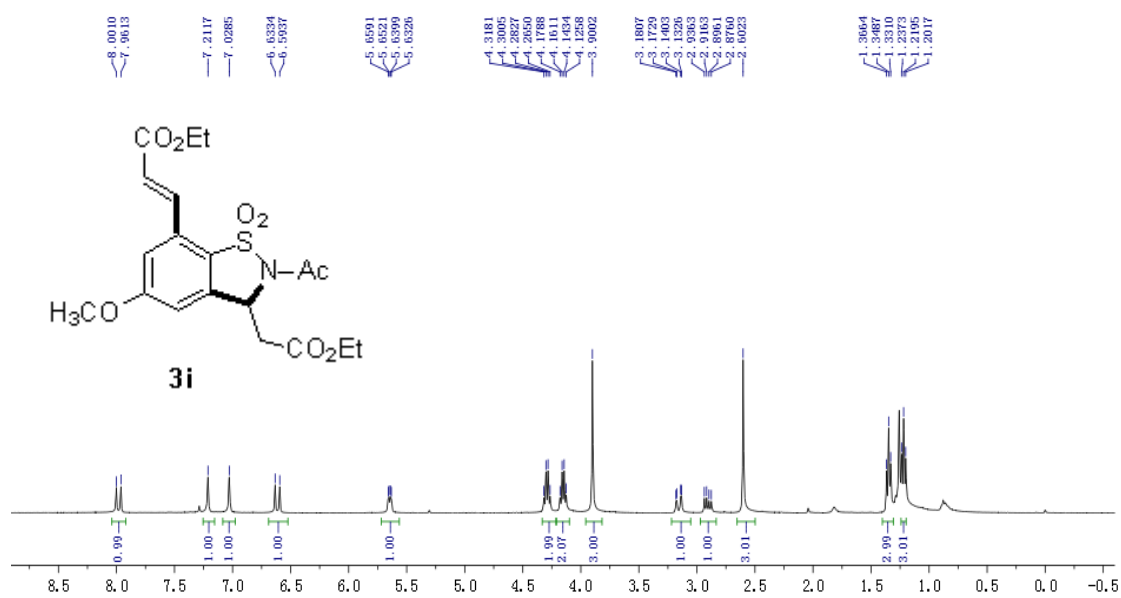
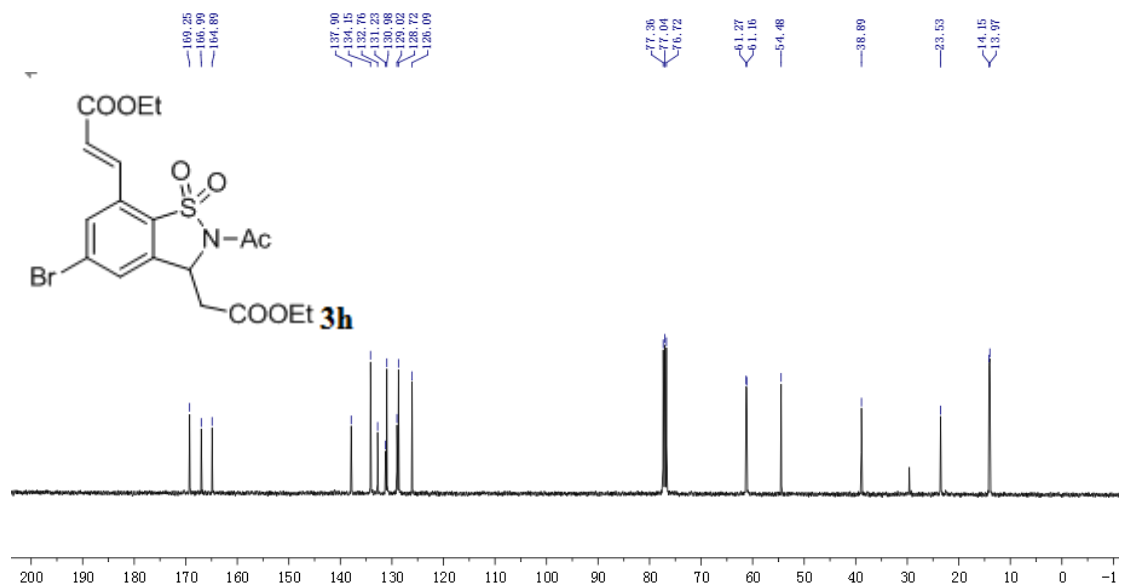


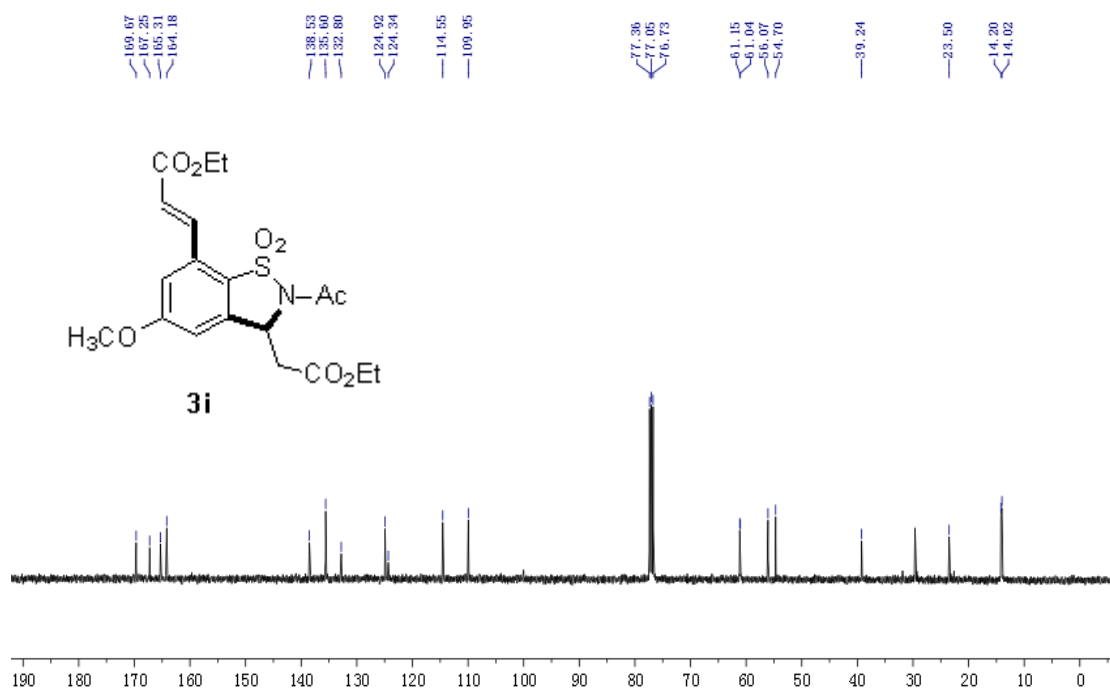
litong
lt-56





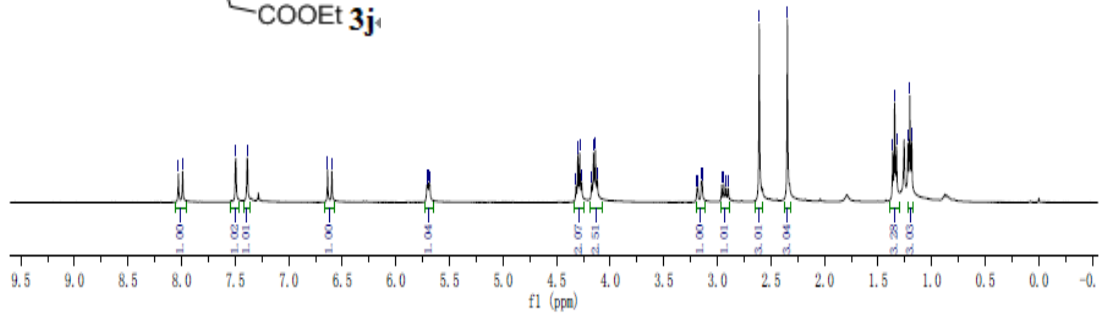
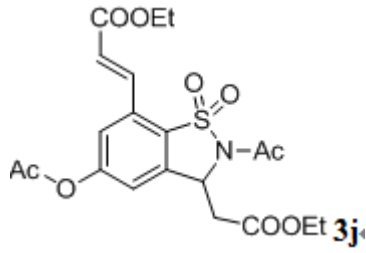






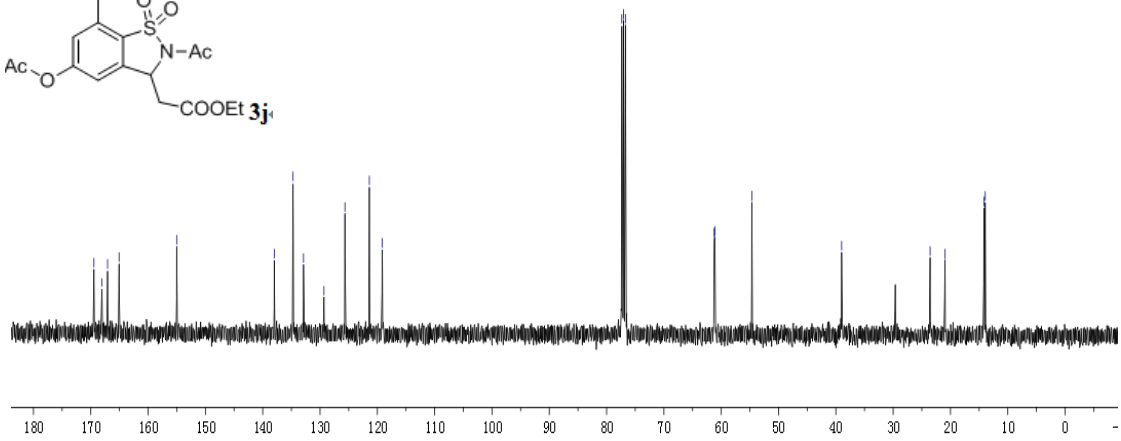
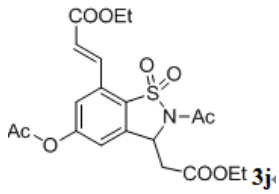
litong
lt-66-7

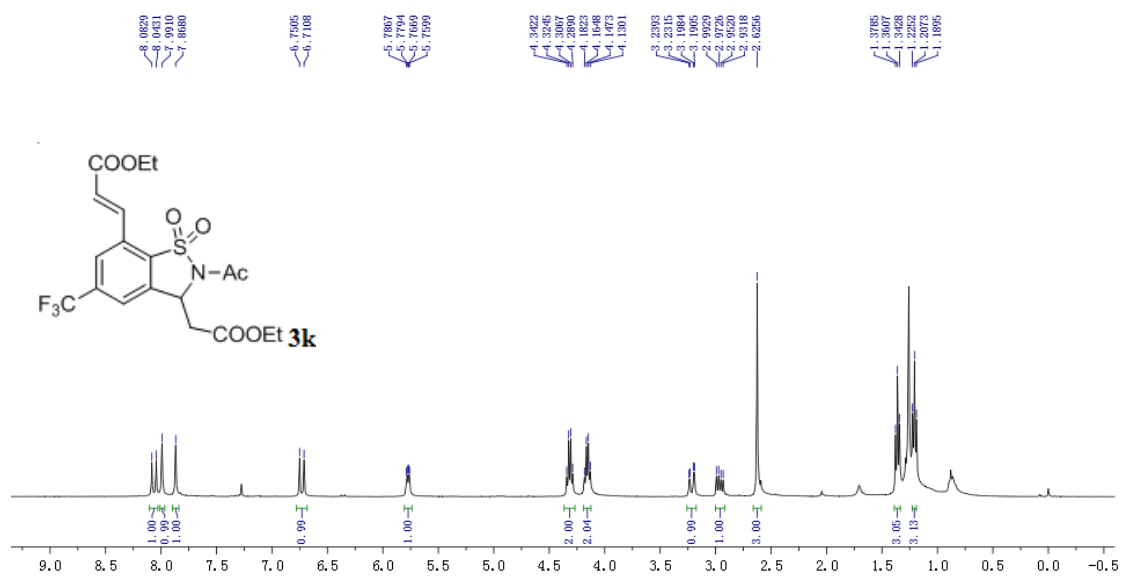
8.0502
7.9906
7.4946
7.3871
6.6328
6.5981
5.7107
5.7037
5.6840
4.3202
4.3076
4.2947
4.2769
4.1562
4.1384
4.1206
3.1901
3.1829
3.1694
3.1524
3.0304
2.9300
2.9184
2.8984
2.8804
2.6004
2.3469

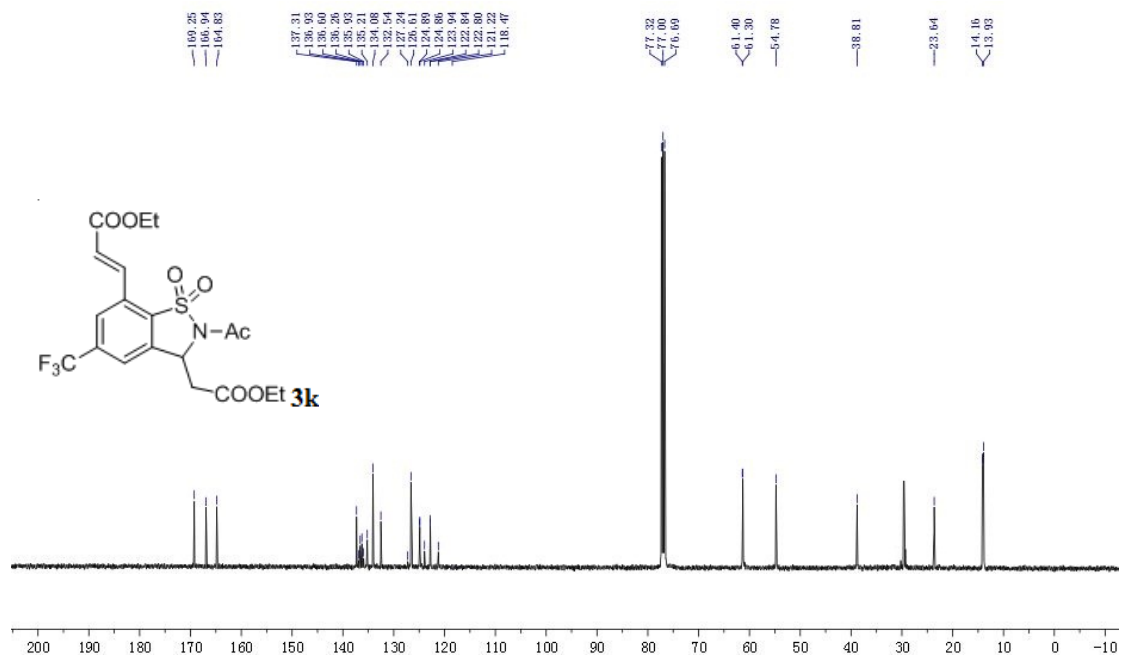


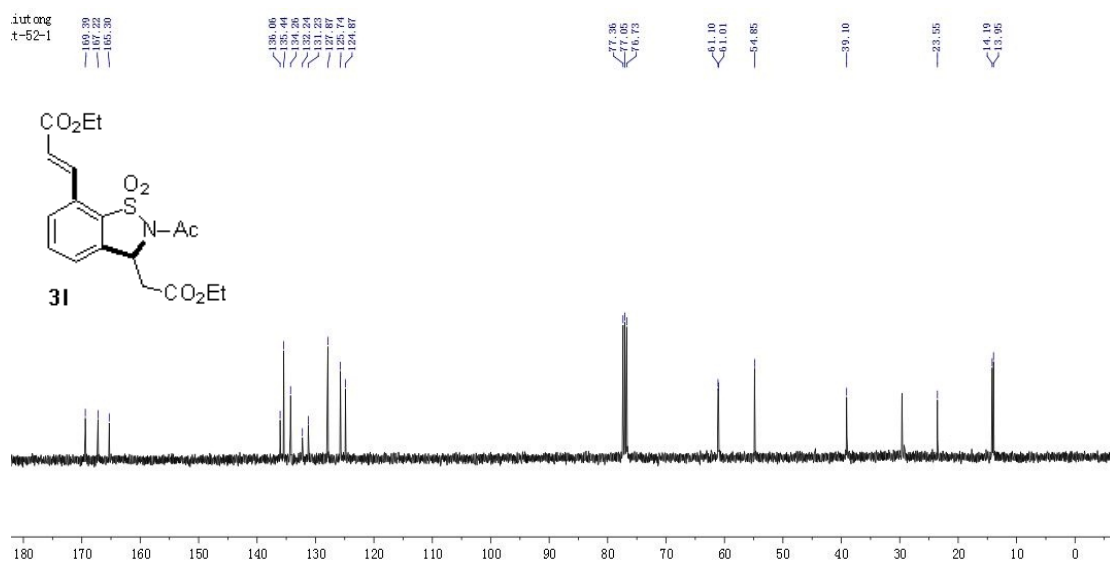
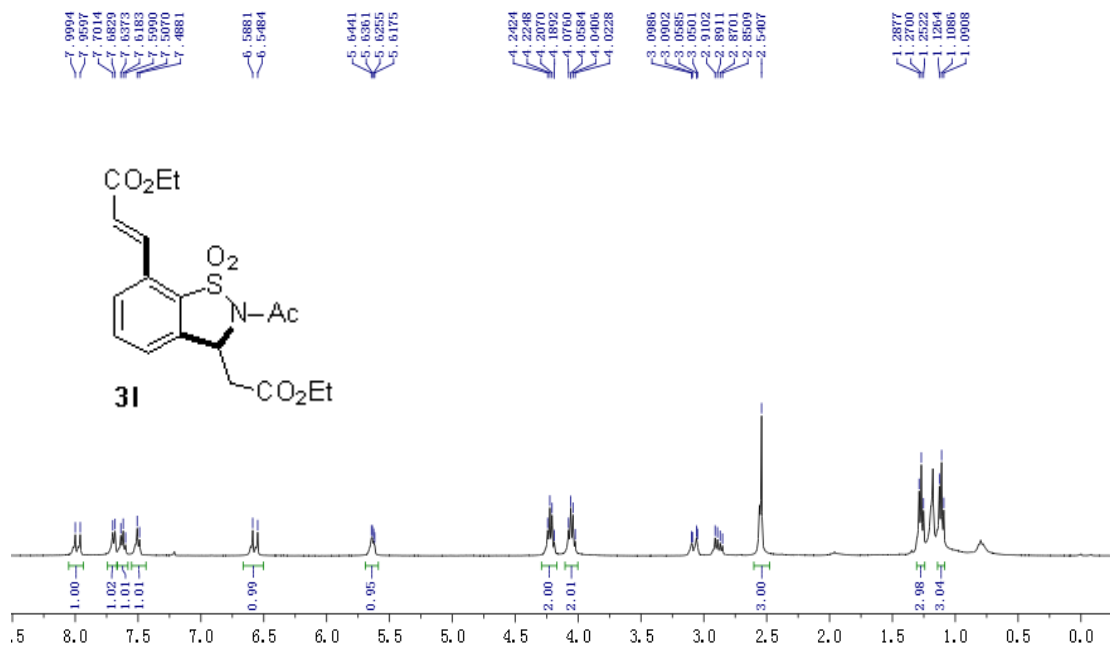
litong
t-66-7

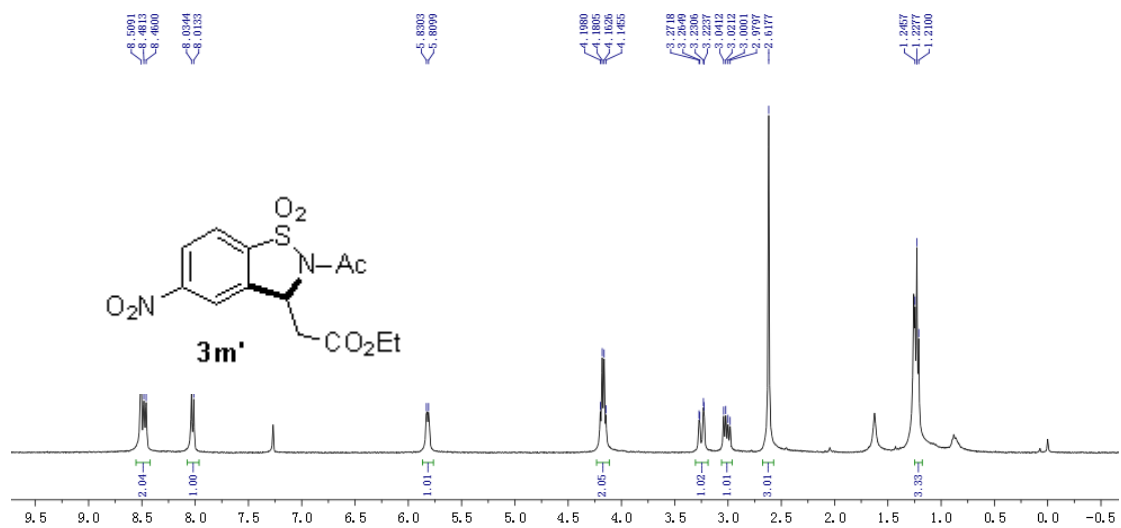
169.4553
168.0585
167.0756
165.0683
155.0117
137.0890
135.1114
132.6880
129.3111
125.0579
121.3975
119.1399
77.3497
77.0325
76.7154
61.2324
61.1094
54.6023
38.9955
23.5508
20.9584
14.1648
13.9341

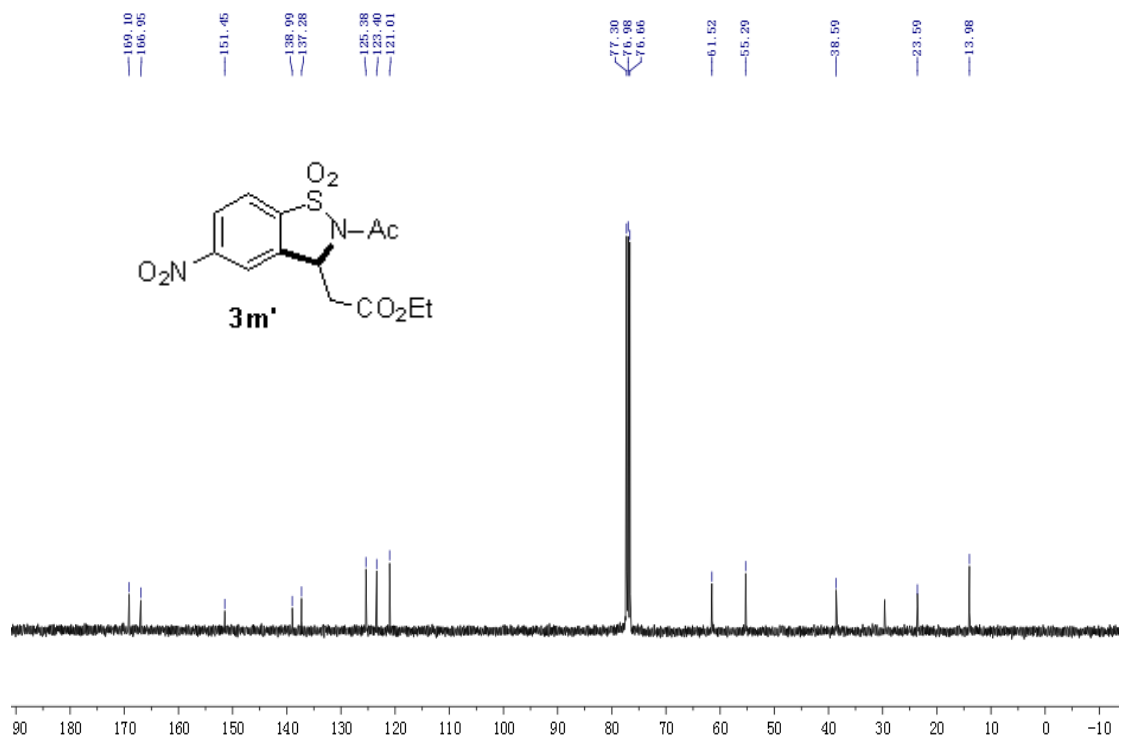


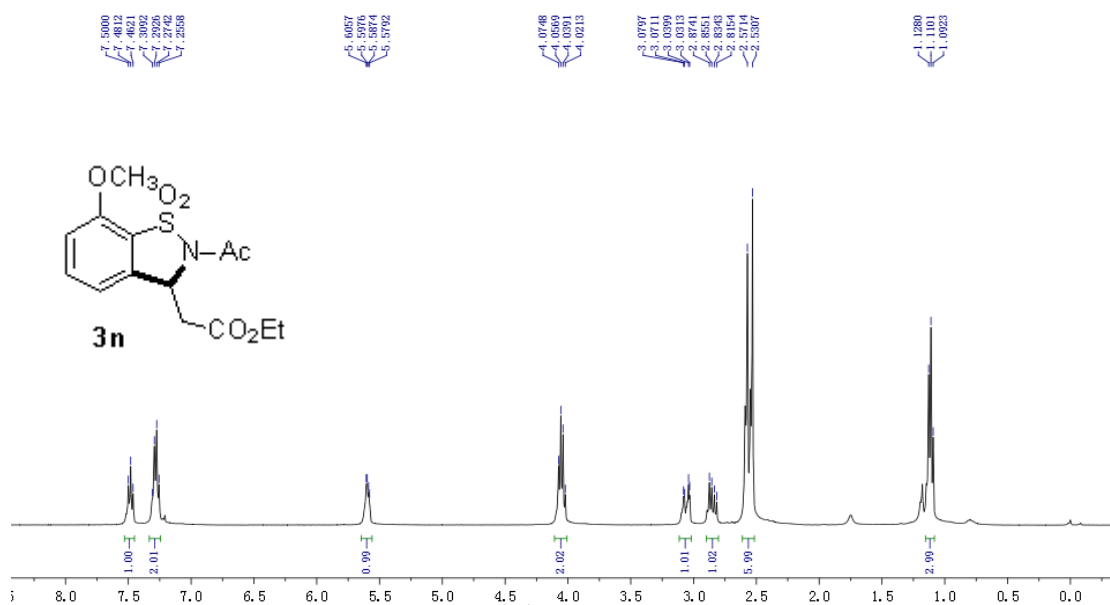




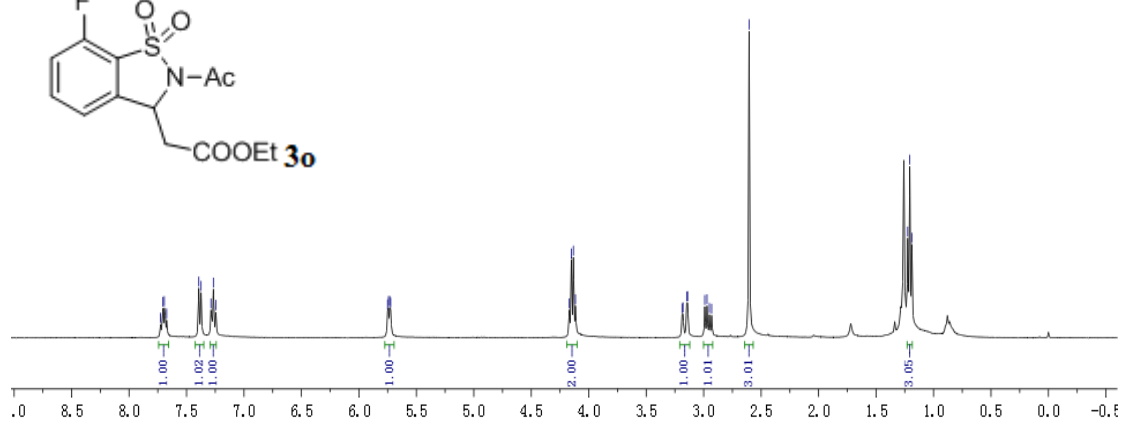
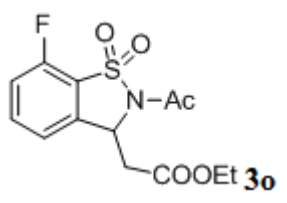
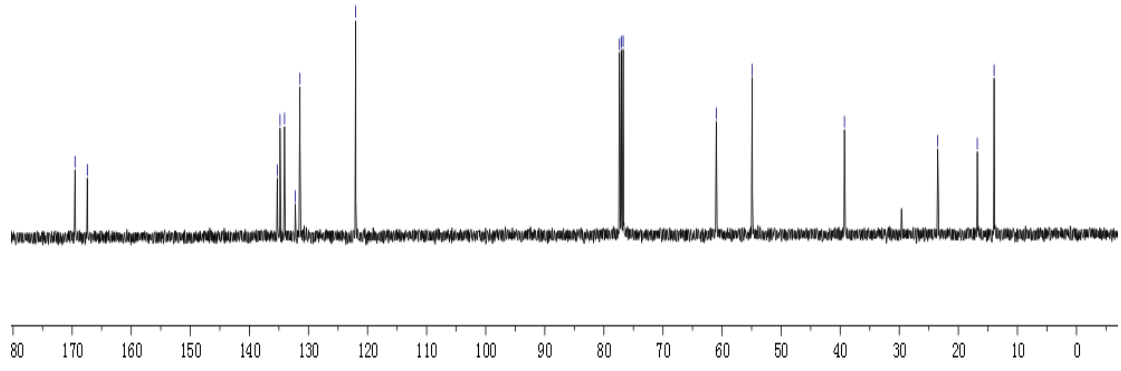
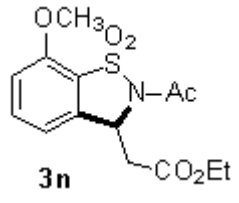


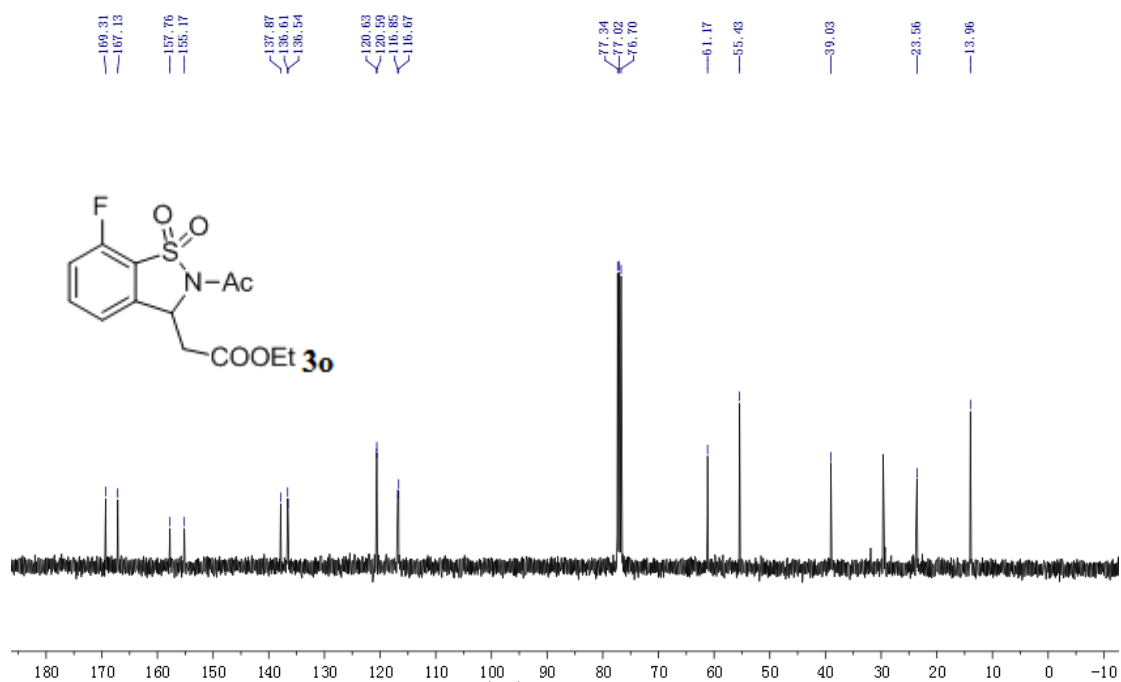


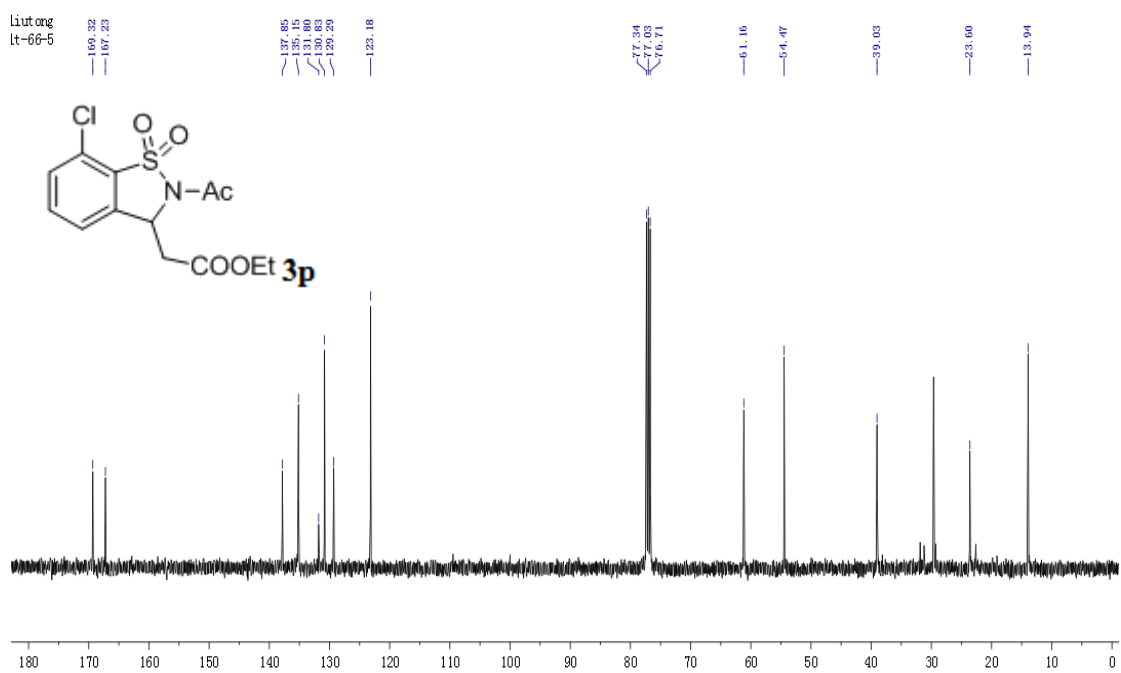
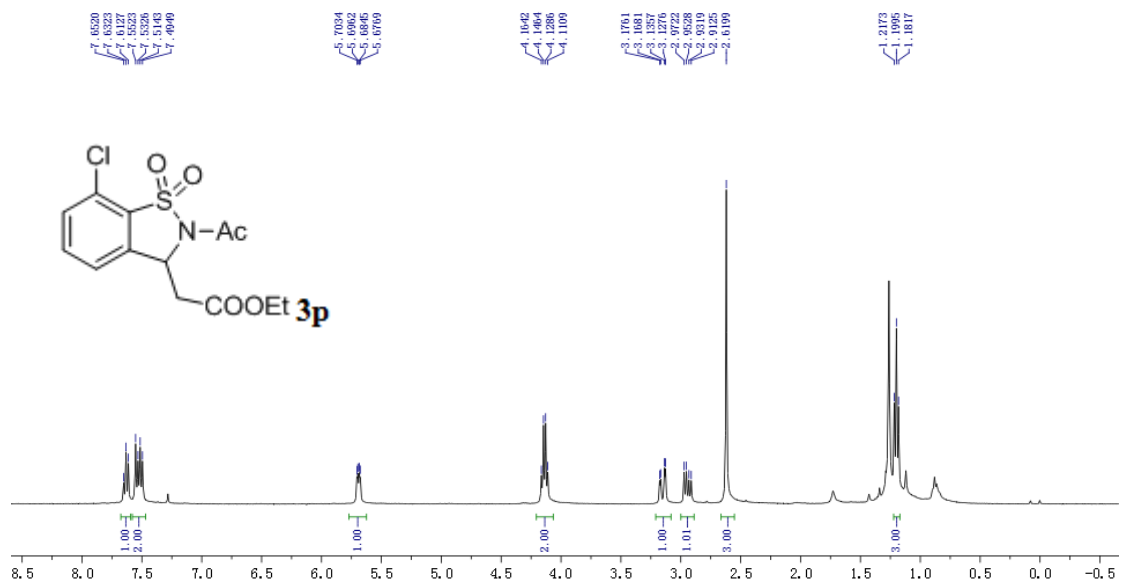


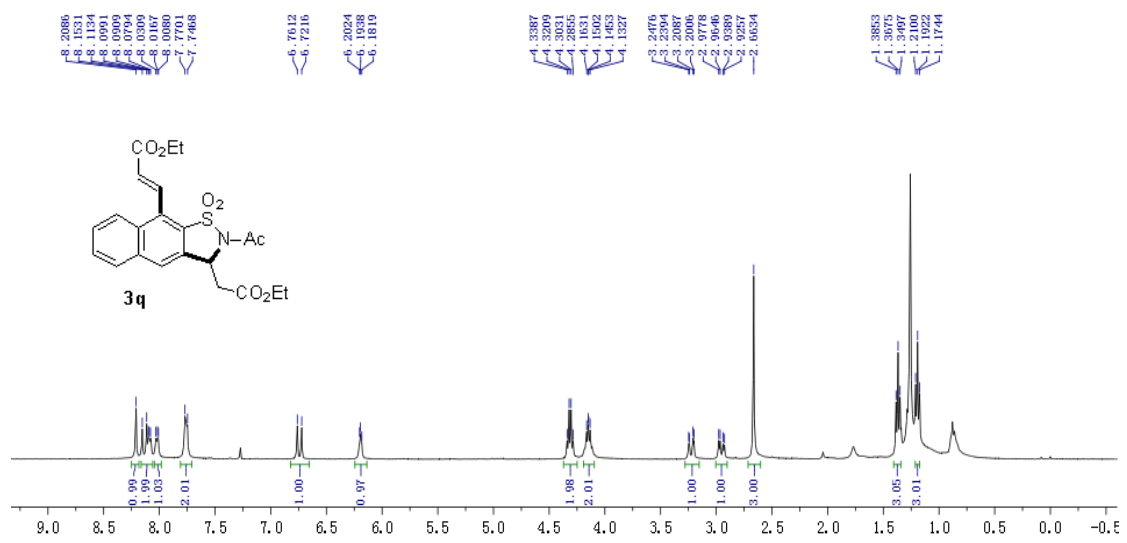


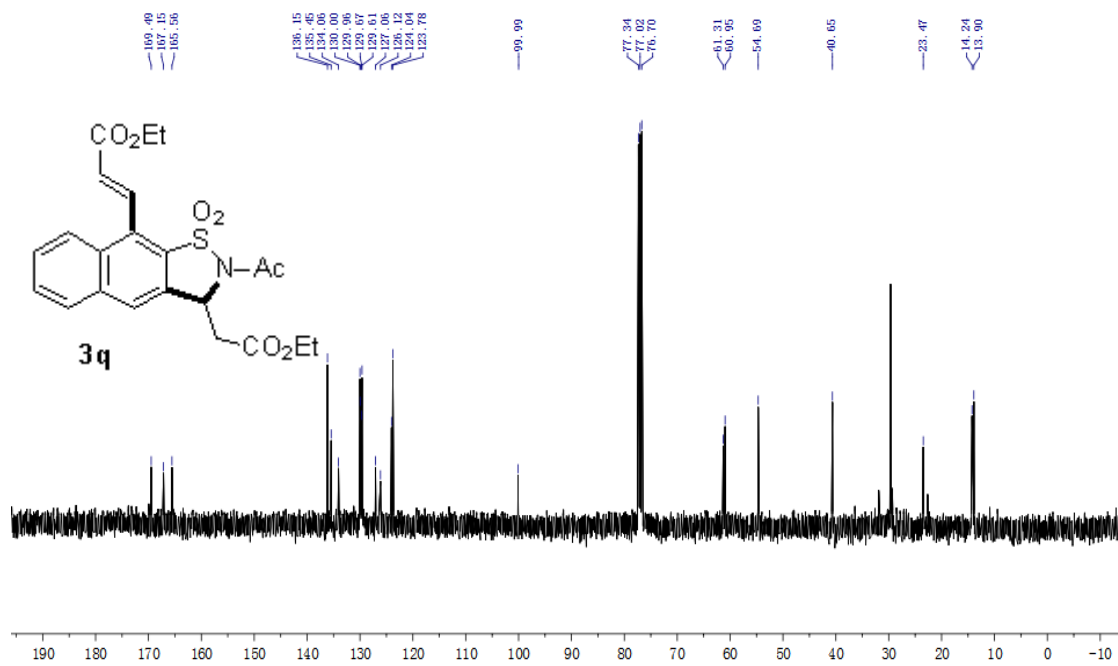
ut ong
-c54-1

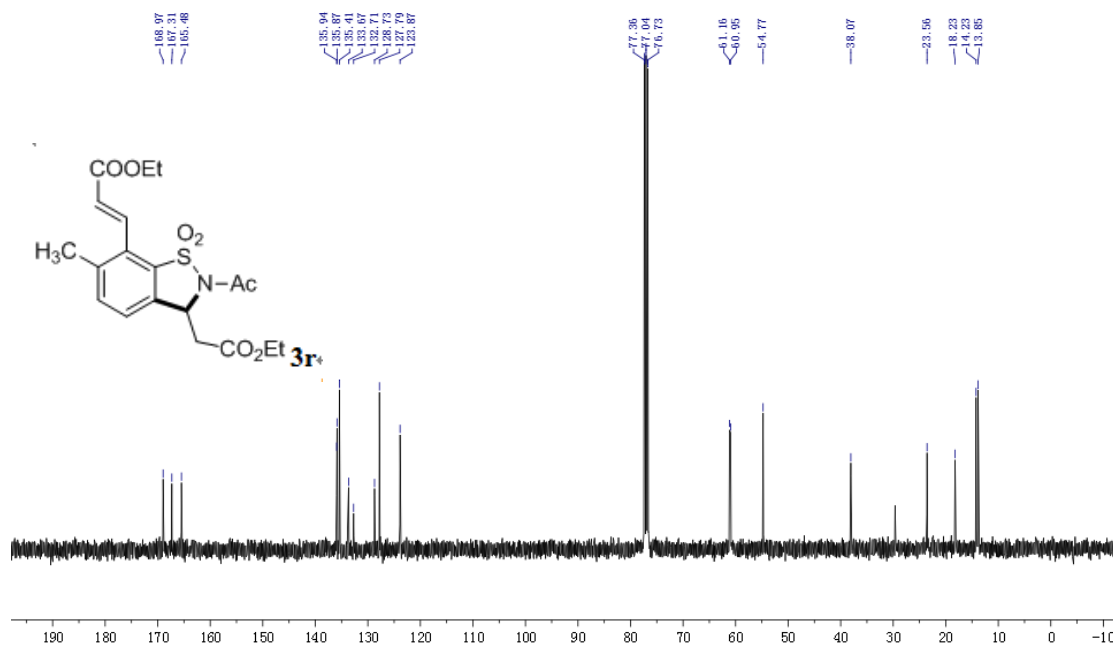
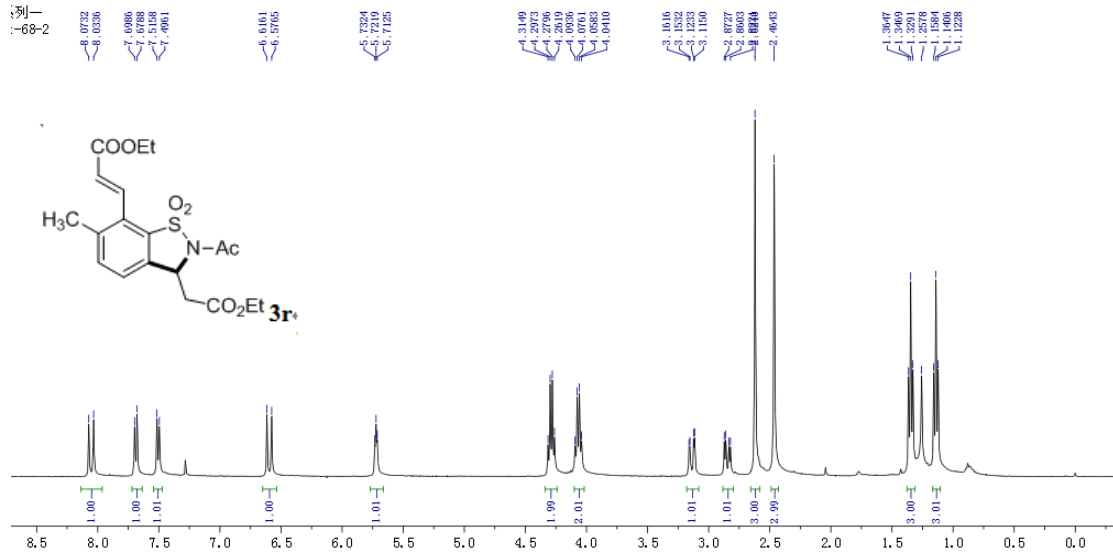












Compound 6

