

Electronic Supplementary Information

## Bacterial nanocellulose with a shape-memory effect as potential drug delivery system

Cite this: DOI: 10.1039/x0xx00000x

Astrid Müller<sup>a,§</sup>, Matthias Zink<sup>a,§</sup>, Nadine Hessler<sup>a</sup>, Falko Wesarg<sup>b</sup>, Frank A. Müller<sup>b,c</sup>, Dana Kralisch<sup>a,c</sup> and Dagmar Fischer<sup>a,c,\*</sup>

Received 00th January 2012,

Accepted 00th January 2012

DOI: 10.1039/x0xx00000x

[www.rsc.org/](http://www.rsc.org/)

### Notes and references

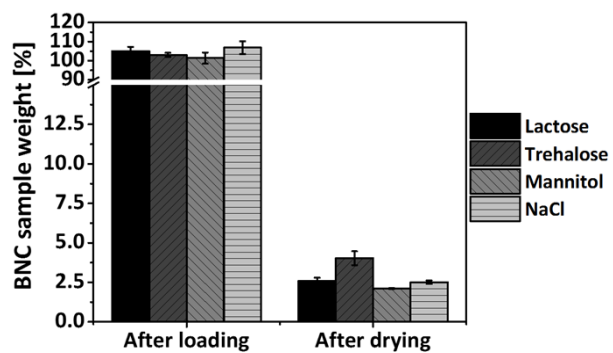
<sup>a</sup> Institute of Pharmacy, Department of Pharmaceutical Technology, Friedrich-Schiller-University, Otto-Schott-Strasse 41, 07745 Jena, Germany.

\* E-mail: [dagmar.fischer@uni-jena.de](mailto:dagmar.fischer@uni-jena.de)

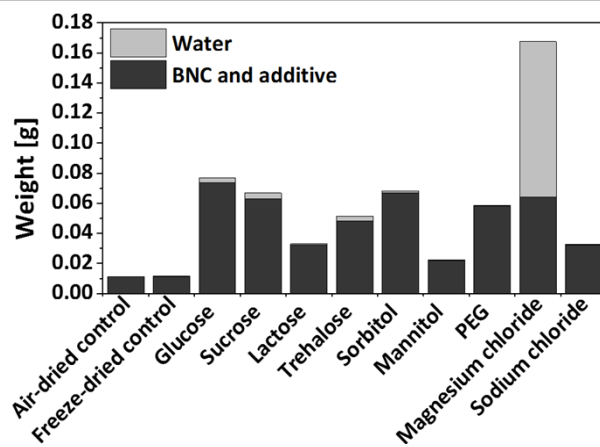
<sup>b</sup> Otto-Schott-Institute of Materials Research (OSIM), Friedrich-Schiller-University, Loebdergraben 32, 07743 Jena, Germany.

<sup>c</sup> Jena Center for Soft Matter (JCSM), Friedrich-Schiller-University, Humboldt-Strasse 10, 07743 Jena, Germany.

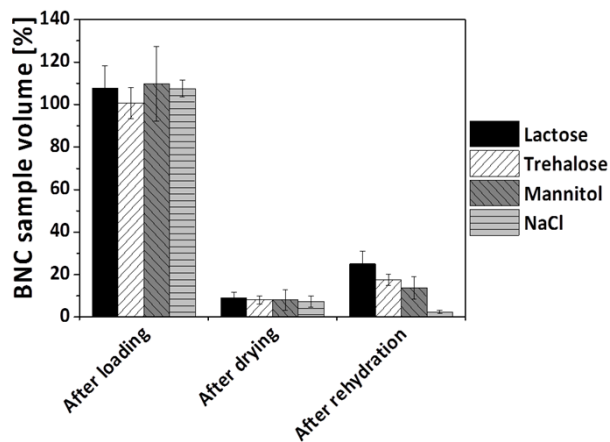
<sup>§</sup> Both authors contributed equally to this work.



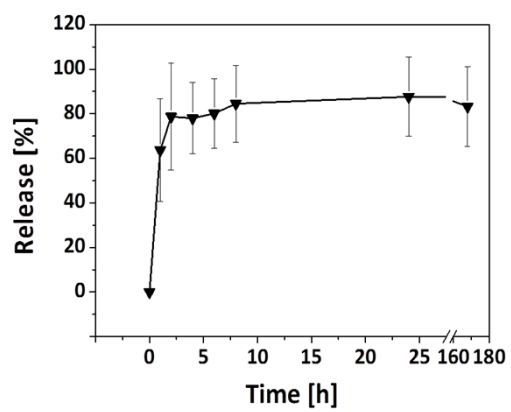
ESI 1 Selected sample weights of BNC after 24 h loading in 10% aqueous additive solution and after 96 h air-drying (mean  $\pm$  SD, n = 3).



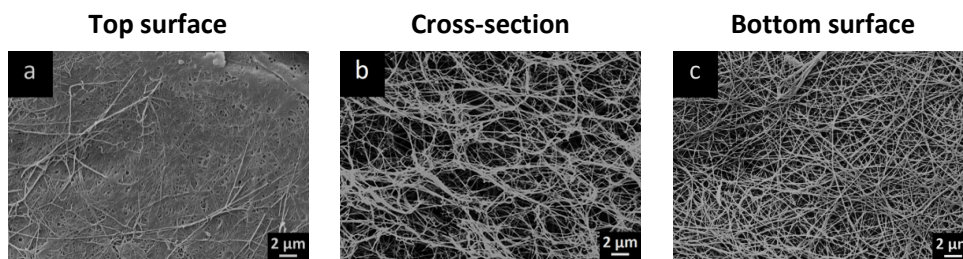
ESI 2 Absolute sample weights and water content of additive loaded BNC after 96 h air-drying.



**ESI 3** Additive loaded BNC with low re-swelling capacity: Comparison of BNC sample volume based on measured sample dimensions (thickness, diameter) and given as percentage of initial volume of additive loaded, dried and re-swollen samples (mean  $\pm$  SD,  $n = 3$ ).



**ESI 4** Glucose release from azorubine and additive loaded air-dried BNC. Glucose was quantified reflectometrically. Data were calculated as mean  $\pm$  SD (n = 3).



**ESI 5** SEM micrographs of the top surface (a), the cross-section (b), and the bottom surface (c) of azorubine and glucose loaded air-dried samples after release (168 h release and 120 h second release step with medium exchange, (scale bars, 2 μm).