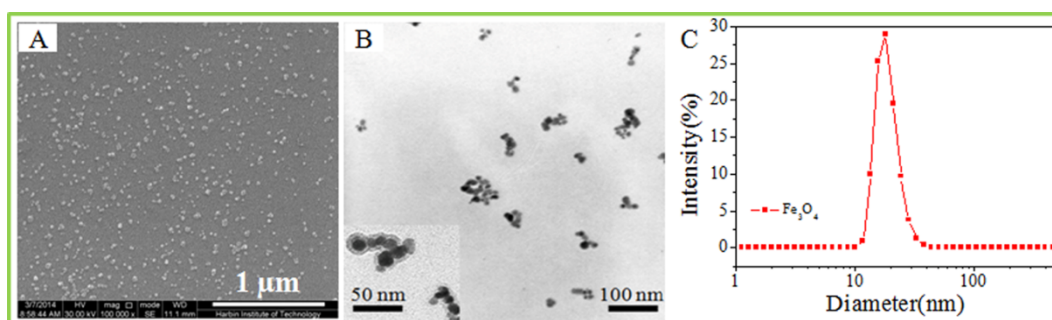


## Shape Memory Polymer Nanocomposite with Multi-Stimuli Response and Two-Way Reversible Shape Memory Behavior

Wenbing Li,<sup>a</sup> Yanju Liu<sup>b</sup> and Jinsong Leng<sup>\*a</sup>

### Support information:



**Fig. S1** (A) SEM micrograph, (B) TEM micrograph and (C) DLS image of Fe<sub>3</sub>O<sub>4</sub> nanoparticles synthesized using a co-precipitation technique.

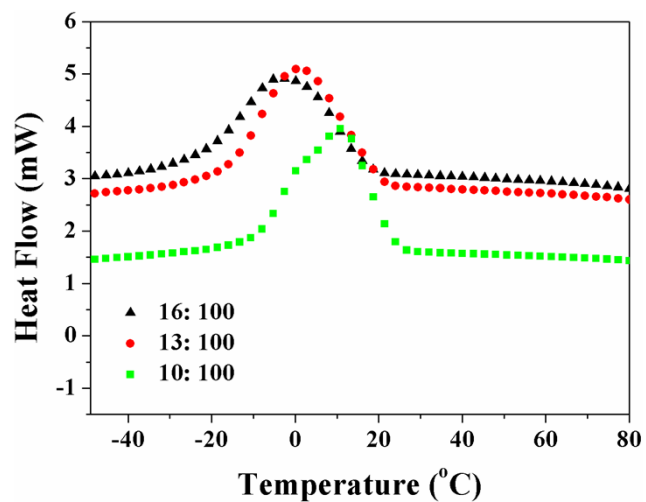


Fig. S2 Representative cooling DSC curves showing the  $T_c$  of the nanocomposites tested.

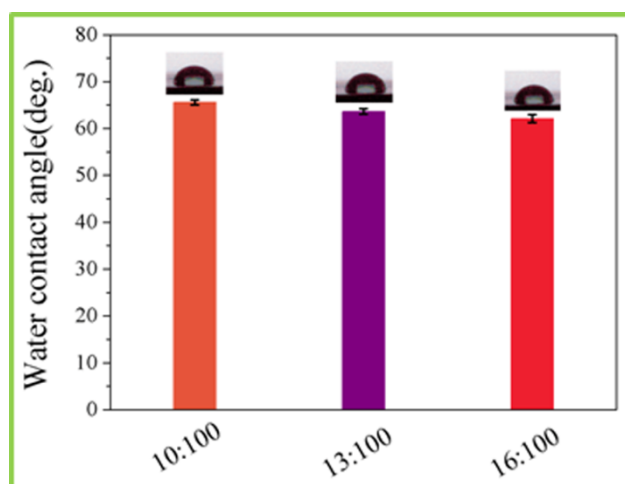


Fig. S3 Water contact angle of c-PCL/ $\text{Fe}_3\text{O}_4$ @M nanocomposites with AL: PCL weight ratios of 10: 100, 13: 100 and 16: 100.