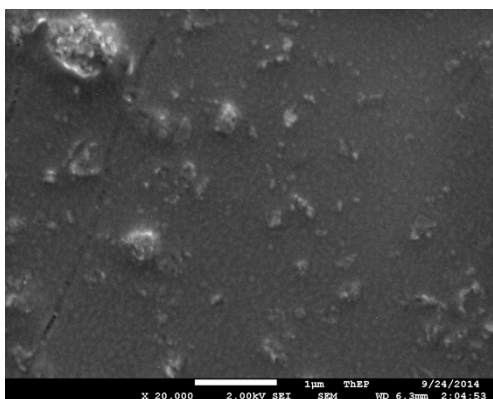


**Reversible sensing of aqueous mercury using a rhodamine-appended
polyterthiophene network on indium tin oxide substrates**

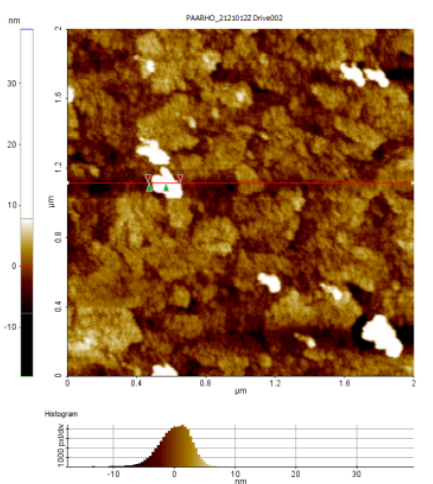
Chatthai Kaewtong,^{*a} Noi Niamsa,^a Buncha Pulpoka^b and Thawatchai Tuntulani^b

^aNanotechnology Research Unit and Supramolecular Chemistry Research Unit, Department of Chemistry and Center of Excellence for Innovation in Chemistry, Faculty of Science, Mahasarakham University, Mahasarakham, 44150, Thailand. Fax: 66 0437 54246; Tel: 66 0437 54246; E-mail: kchatthai@gmail.com

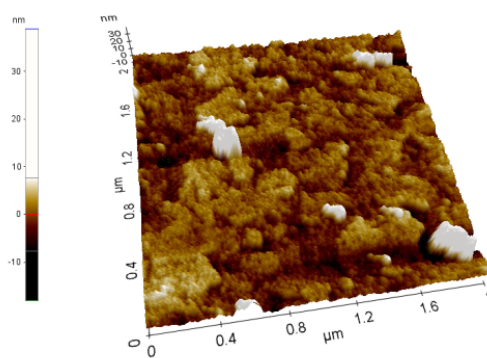
^bSupramolecular Chemistry Research Unit, Department of Chemistry, Faculty of Science, Chulalongkorn University, Bangkok 10330, Thailand. Fax: 66 0221 87598; Tel: 66 0221 87643.



a)



b)



c)

Figure S1. FESEM image (a) and 2D, 3D (b,c) AFM images of PRhoT electropolymerized at 50 mV/s in TBAPF₆/CH₂Cl₂ electrolyte (WE, ITO; CE, Pt wire; RE, Ag/AgCl wire) on the ITO substrate at the range of 0.0 - 1.0 V.