

Supporting Information

The Selective Conversion of D-limonene to *p*, α -Dimethylstyrene

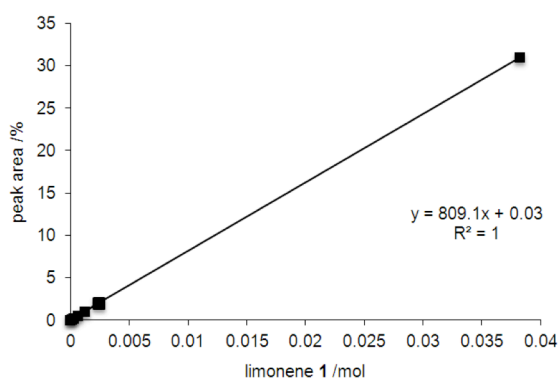
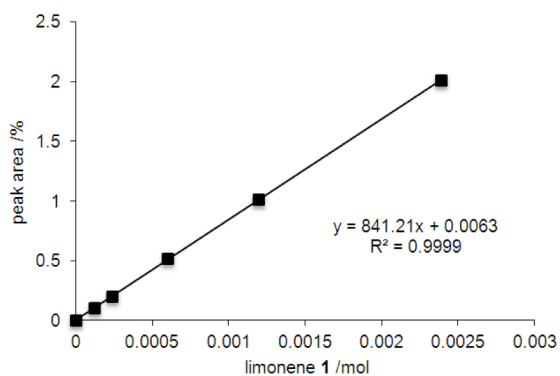
Sandra A. Sanchez-Vazquez, Tom D. Sheppard, Julian R. G. Evans, Helen C. Hailes

Content

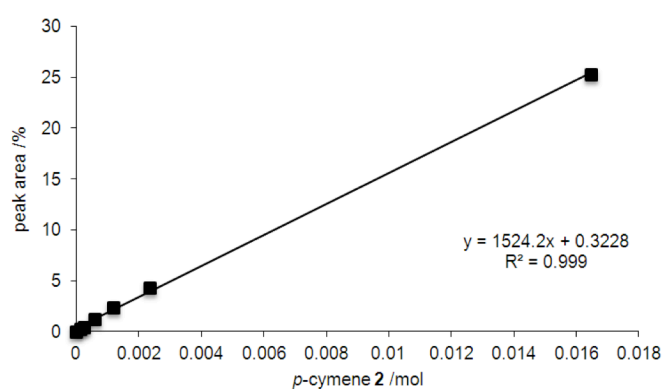
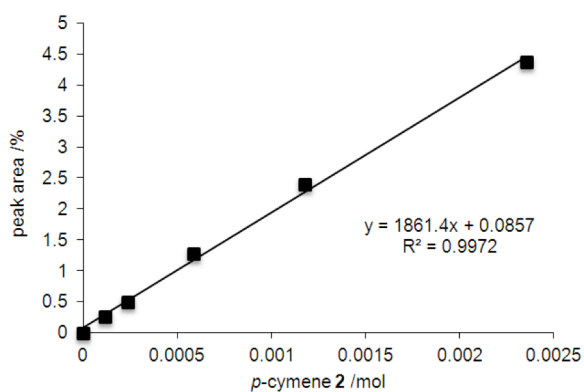
1. **Figure 1:** GC calibration curves
2. **Figure 2:** Representative GC analysis trace
3. **Figure 3:** GC analysis trace when using optimised reaction conditions (Table 2, entry 10).

1. **Figure 1. GC calibration curves**

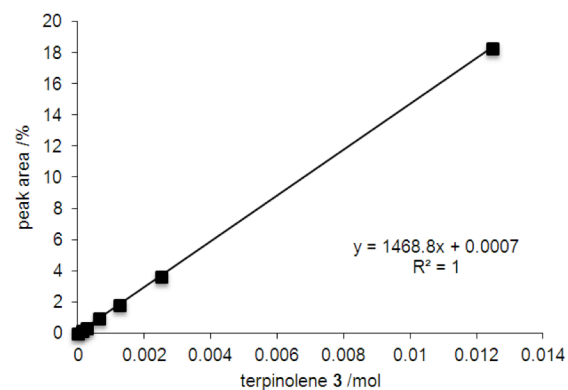
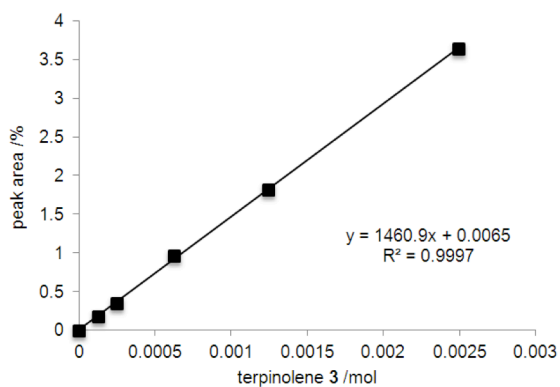
D-Limonene 1



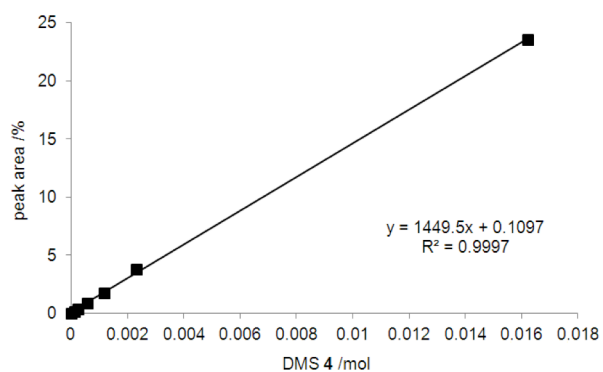
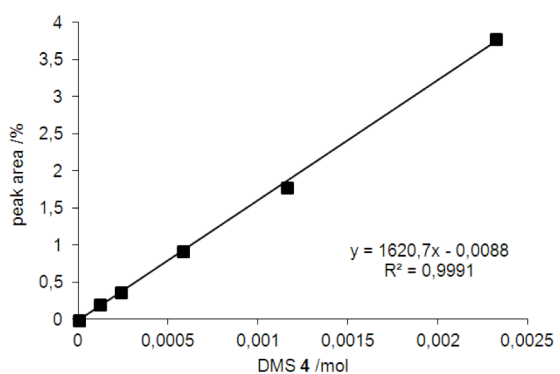
p-cymene 2



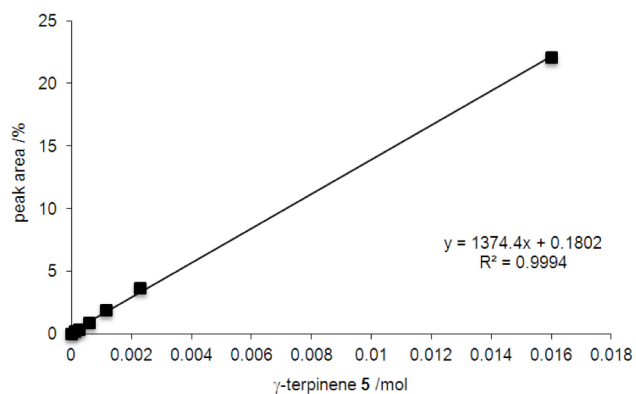
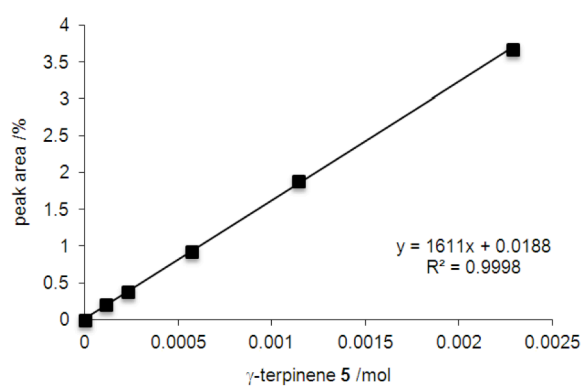
terpinolene 3



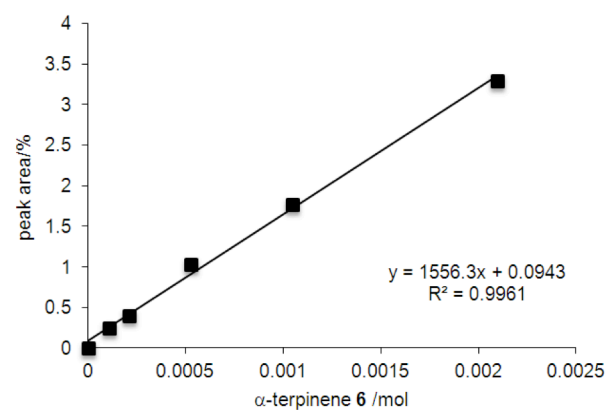
DMS 4



γ -terpinene 5



α -terpinene 6



2.

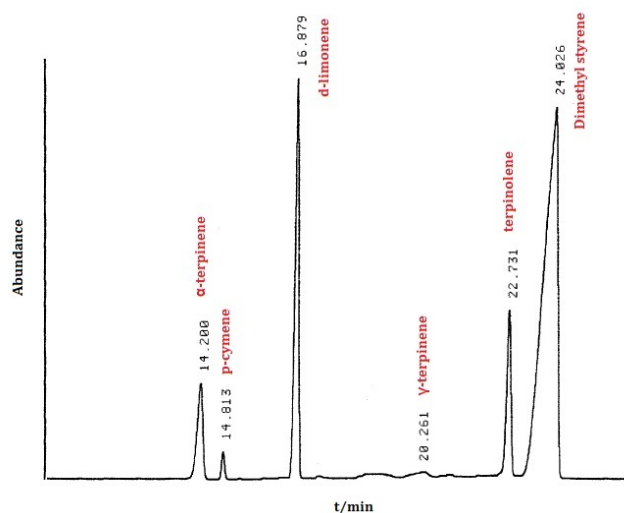


Figure 2. Representative GC analysis from the reaction using anhydrous DMF, anhydrous 2,6-tBu₂Py, 5 mol% Pd(OTFA)₂, CuCl₂ and 4Å molecular sieves at 80 °C under an argon atmosphere for 40 h (Table 1, entry 4).

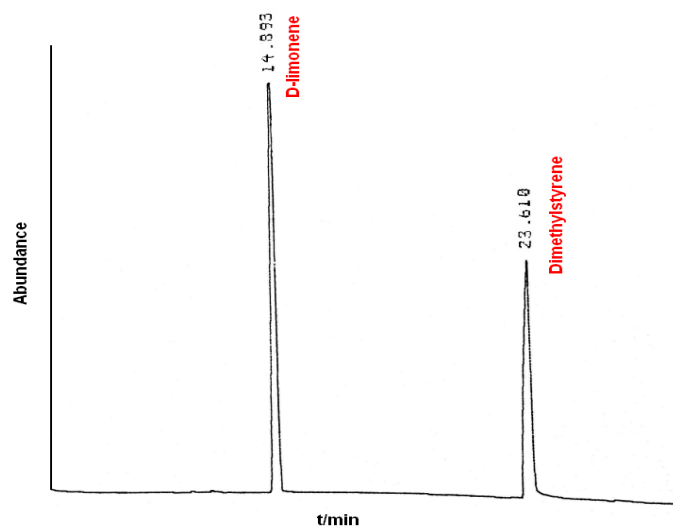


Figure 3. Representative GC analysis trace when using the improved reaction conditions (Table 2, entry 10).