

Supporting Information

CoFe₂O₄@MnFe₂O₄/Polypyrrole Nanocomposites for *in vitro* Photothermal/Magnetothermal Combined Therapy

Jun Wang¹, Zhiguo Zhou^{a*}, Li Wang^a, Jie Wei^a, Hong Yang^a, Shiping Yang^{a, b}, Jiangmin Zhao^{b*}

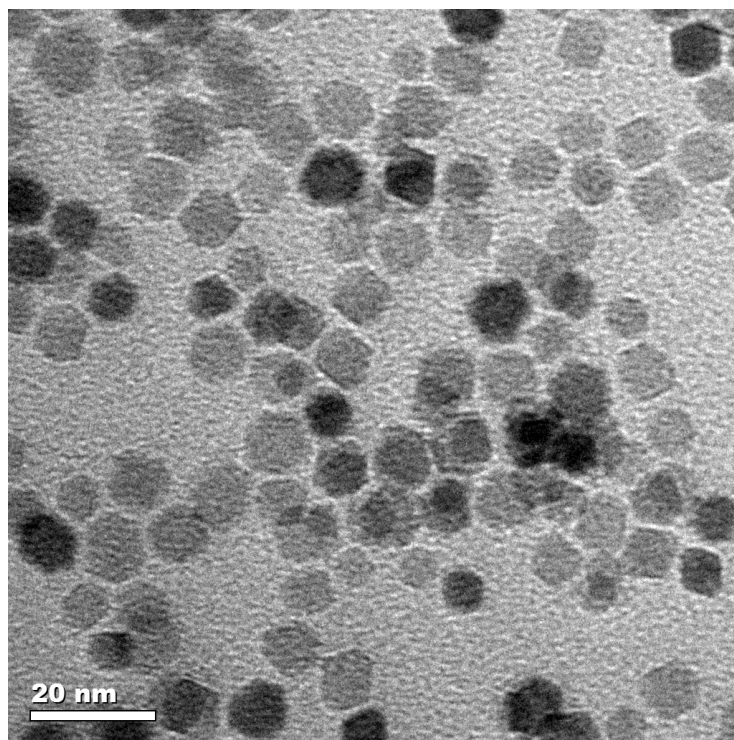


Figure S1 A typical TEM of CoFe₂O₄ nanoparticles

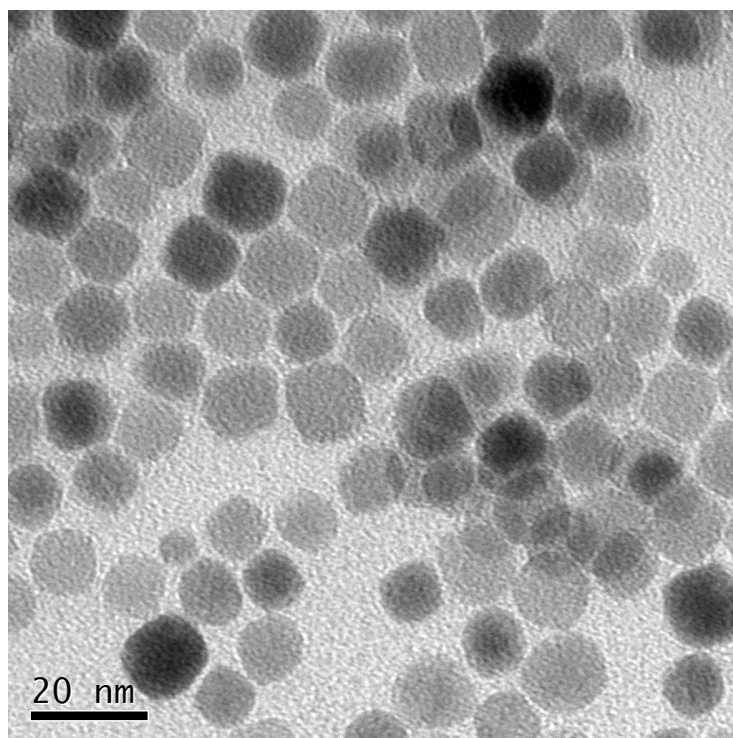


Figure S2 A typical TEM of $\text{CoFe}_2\text{O}_4@\text{MnFe}_2\text{O}_4$ nanoparticles

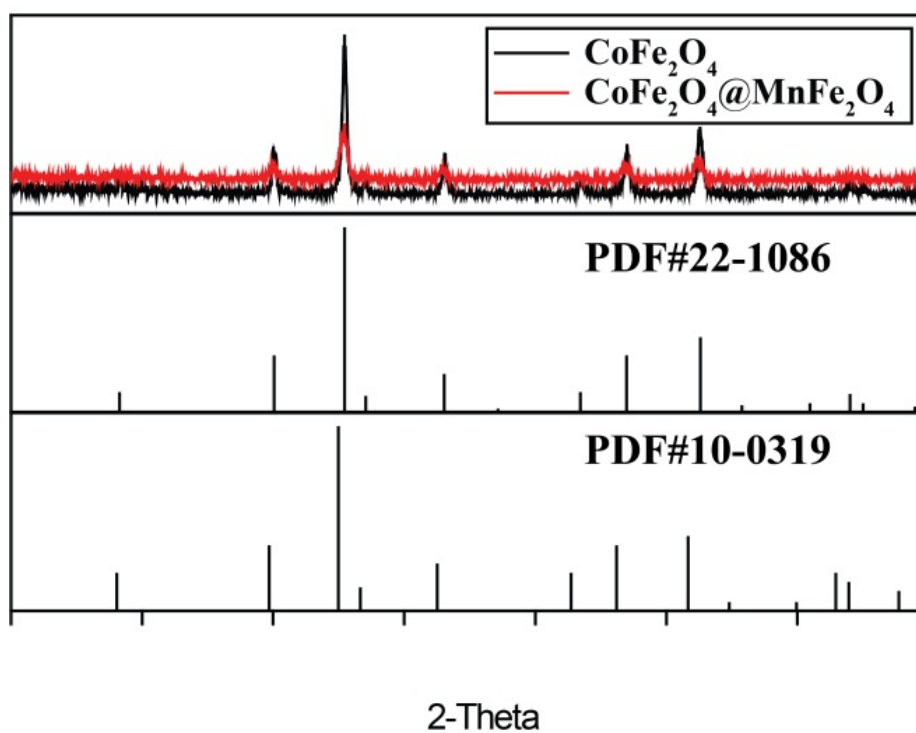


Figure S3. X-ray diffraction patterns of CoFe_2O_4 nanoparticles (black) and $\text{CoFe}_2\text{O}_4@\text{MnFe}_2\text{O}_4$ nanocomposites (red).

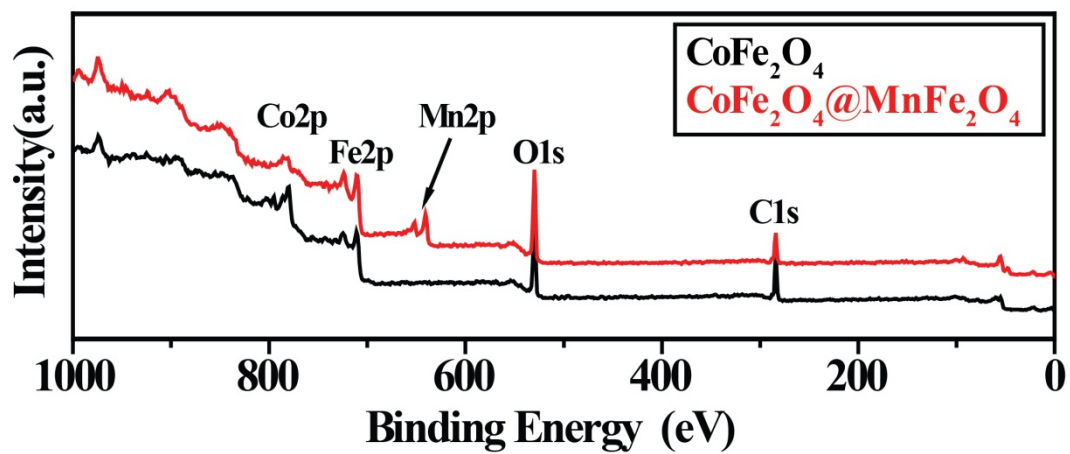


Figure S4. XPS spectra of CoFe₂O₄ nanoparticles (black) and CoFe₂O₄@MnFe₂O₄ nanocomposites (red)