

Figure Legends

Figure 1S. Immobilization courses of different lipases on octyl agarose support.

Experiments have been performed as described in Section 2. Panel A (CALB): Triangles, solid black line: soluble enzyme; square, solid black line: supernatant. Panel B (Lecitase): Rhombus, dash line: suspension; Squares, solid black line: supernatant; Triangles, solid black line: soluble enzyme. Panel C (RML): Rhombus, solid black line: suspension; Squares, solid black line: supernatant; Triangles, solid black line: soluble enzyme. Panel D (TLL): Rhombus, solid black line: suspension; Squares, solid black line: supernatant; Triangles, solid black line: soluble enzyme.

Figure 2S. Evolution of the enzyme activity of lipases immobilized on OCGLX during long term incubation at pH 10 and 25°C. Experiments have been performed as described in Section 2. Panel A: (CALB), Panel B: (Lecitase), Panel C: (RML) and Panel D: (TLL); Solid black line (pH 10 without mercaptoethanol), dash line (pH 10 with mercaptoethanol).

Figure 3S. Re-uses of CALB-OCGLX in the hydrolysis of R-methyl mandeleteae. Similar results were obtained using TLL-OCGLY, RML-OCGLY or Lecitase OCGLY. Activities were calculated at 20% hydrolysis, the reaction was considered ended when ester were under 2%.

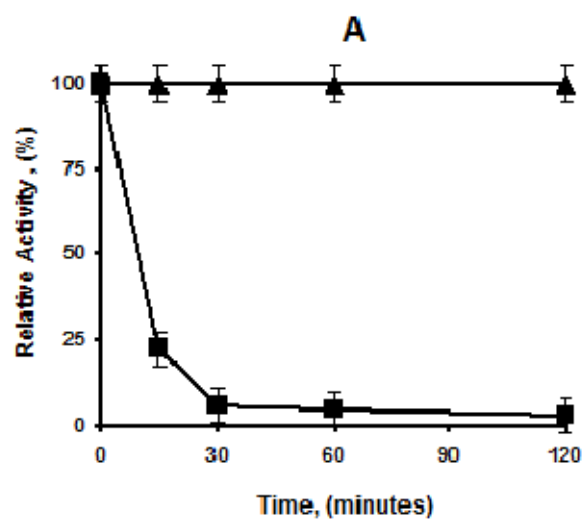


Figure 1S

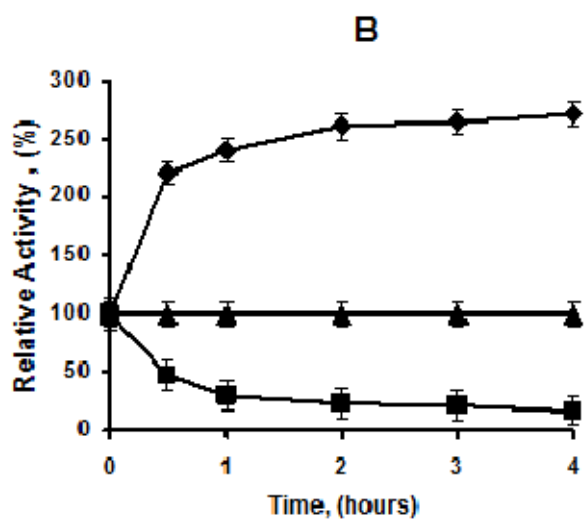


Figure 1S

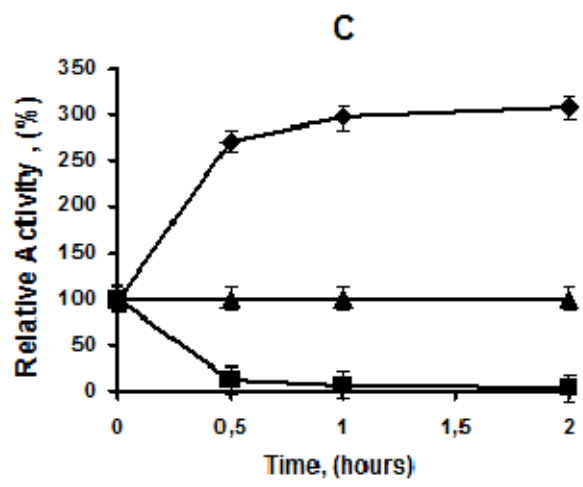


Figure 1S

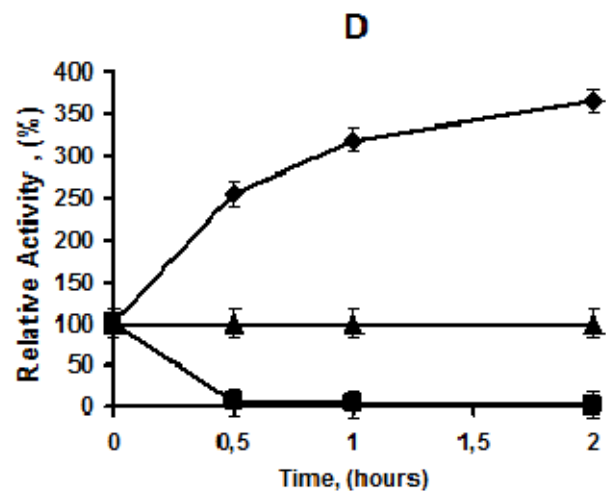


Figure 1S

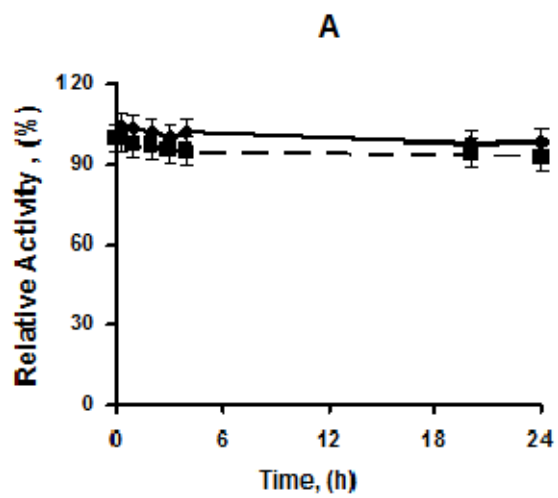


Figure 2S

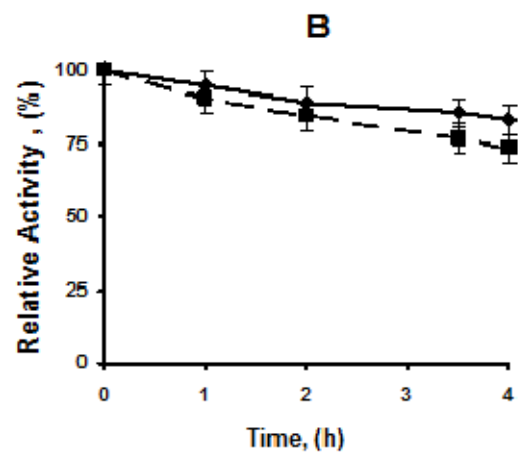


Figure 2S

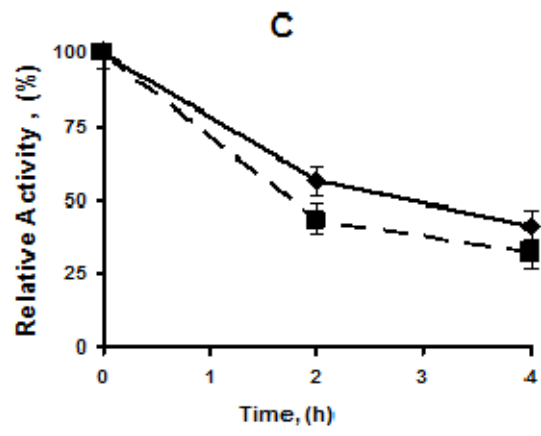


Figure 2S

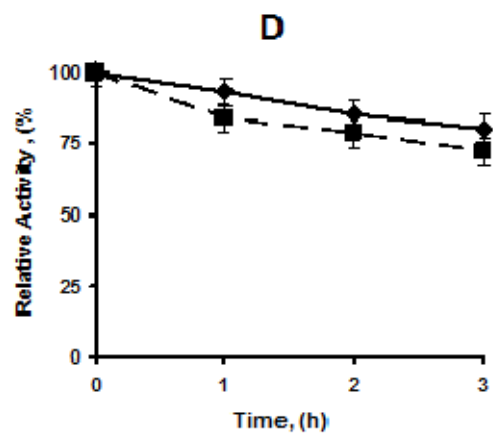


Figure 2S

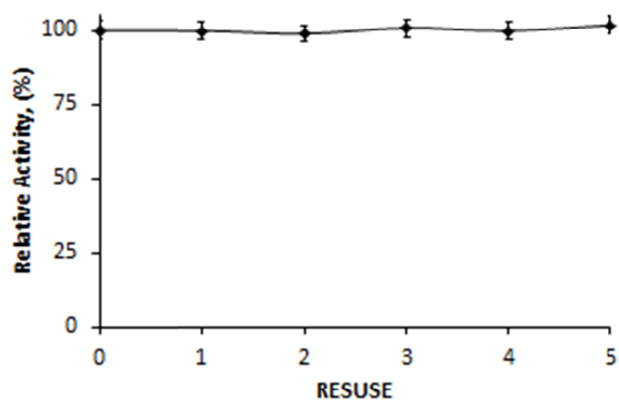


Figure 3S