

Supplementary Information

Nano-hydroxyapatite Promotes Self-assembly of Honeycomb Pores in poly(L-lactide) Films Through Breath-Figure Method and MC3T3-E1 cell functions

X. H. Wu,^a Z. Y. Wu^b, J. C. Su^{c*}, Y.G. Yan^d, B.Q. Yu^e, J. Wei^b and L.M. Zhao^{b*}

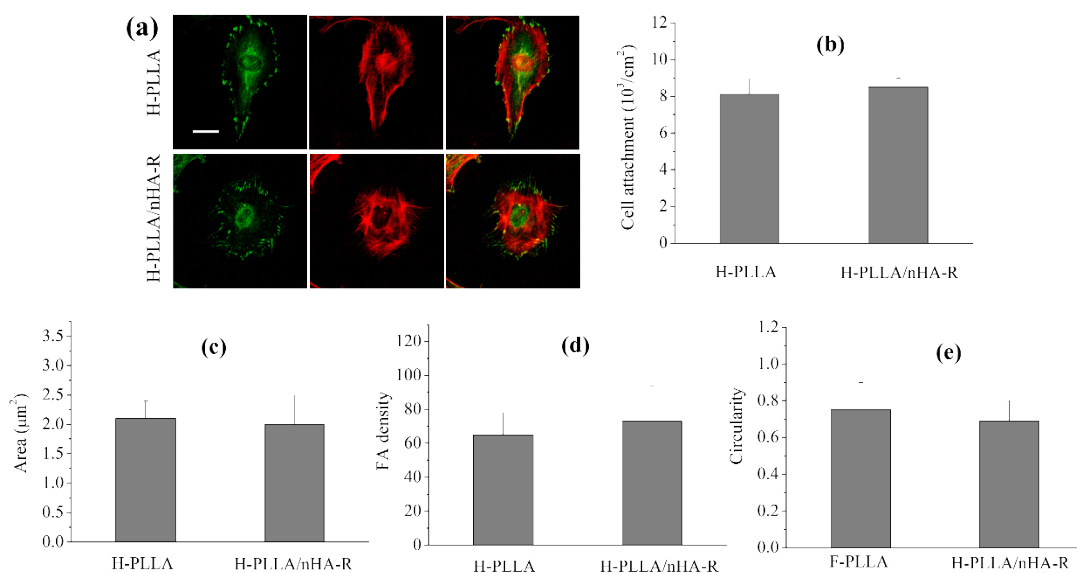


Figure S1. (a) Vinculin-stained FAs (green, left column), RP-stained cytoskeleton (red, middle column), and merged images (right column) at day 1 postseeding. Scale bar of 20 μm is applicable to all. (b) Cell attachment represented by cell numbers determined by MTT assay at 4 h. (c) FA area. (d) FA density. (e) FA circularity quantified from vinculin-stained FAs using ImageJ software.

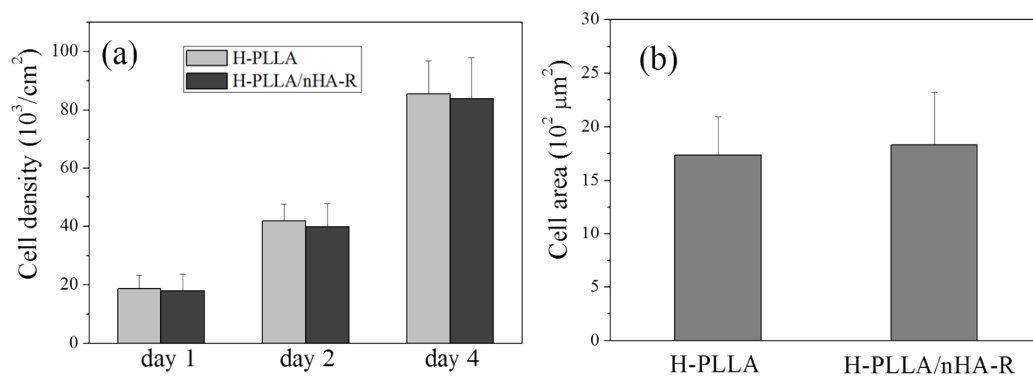


Figure S2. (a) Cell proliferation on the H-PLLA and H-PLLA/nHA-R films represented by the cell numbers determined by MTT assay at day 1, 2, and 4. (b) Cell area on the H-PLLA and H-PLLA/nHA-R films at day 1 post seeding.

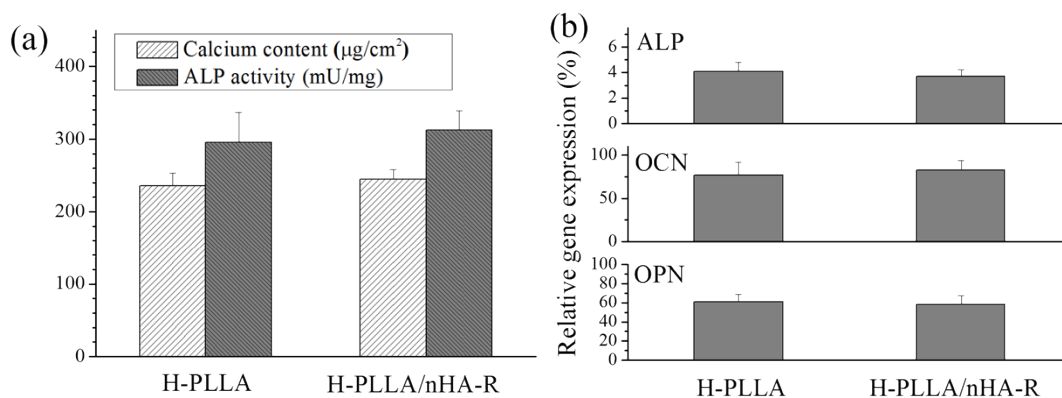


Figure S3. (a) ALP activity and calcium content of MC3T3-E1 cells cultured on H-PLLA and H-PLLA/nHA-R films for 14 days. (b) Gene expression levels of ALP, OCN, and OPN relative to GAPDH in MC3T3-E1 cells at day 14 post seeding on H-PLLA and H-PLLA/nHA-R films.