

Electronic Supplementary Material

NiMoO₄ nanowire @ MnO₂ nanoflake core/shell hybrid structure aligned on carbon cloth for high-performance supercapacitors

Di Guo^a, Weiji Ren^a, Zhi Chen^a, Minglei Mao^a, Qihong Li^{*b}, Taihong Wang^{**a}

^aCollege of Chemistry and Chemical Engineering, State Key Laboratory of Chem/Bio-Sensing and Chemometrics, Hunan University, Changsha, Hunan 410082, P. R. China

^bPen-Tung Sah Institute of Micro-Nano Science and Technology of Xiamen University, Xiamen, 361005, China.

*E-mail: liqihong2004@hotmail.com (Q. H. Li); thwang@iphy.ac.cn (T. H. Wang);
Tel.: +86 0731 88664019; Fax: +86 0731 88822137.

Supplementary Figures

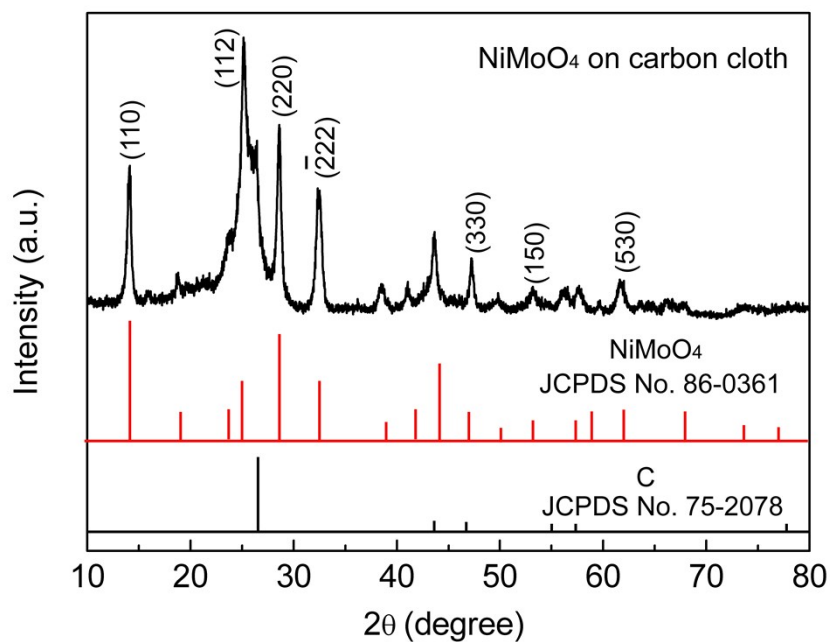


Figure S1 The XRD patterns of NiMoO₄ NWs on carbon cloth.

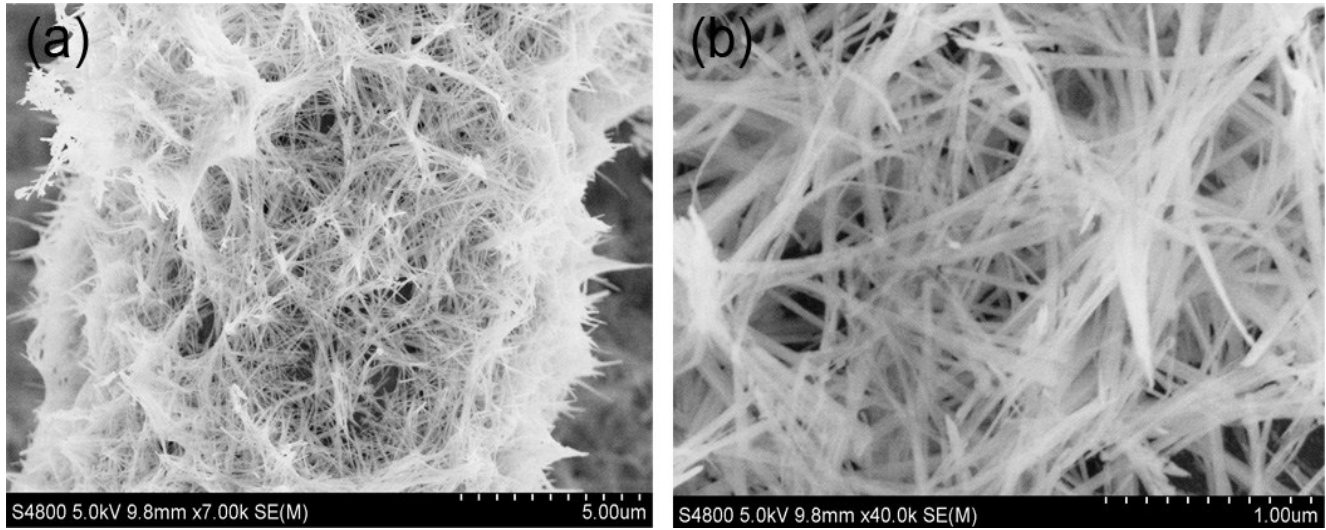


Figure S2 (a) and (b) The SEM images of NiMoO₄ NWs on carbon cloth.

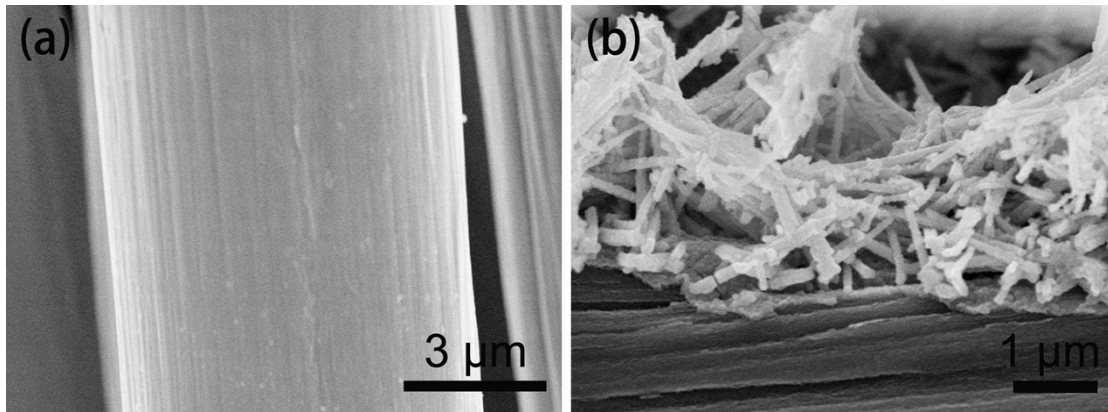


Figure S3 The SEM image of a carbon fiber from the pristine carbon cloth (a) and the cross-sectional SEM image of NiMoO₄@MnO₂ on a carbon fiber (b).

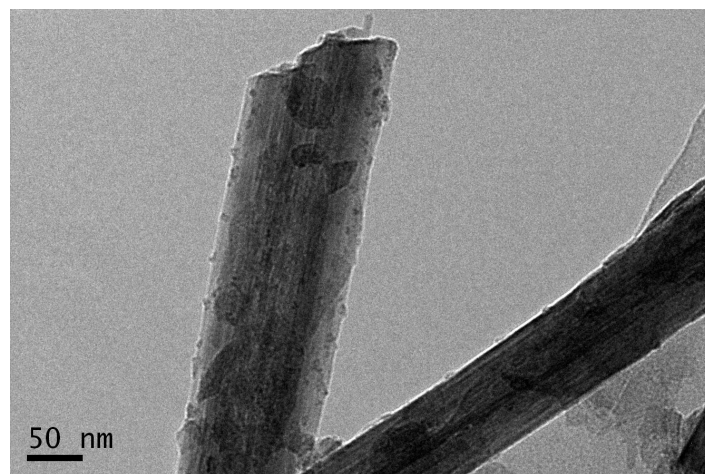


Figure S4 The TEM image of NiMoO₄ NWs on carbon cloth.

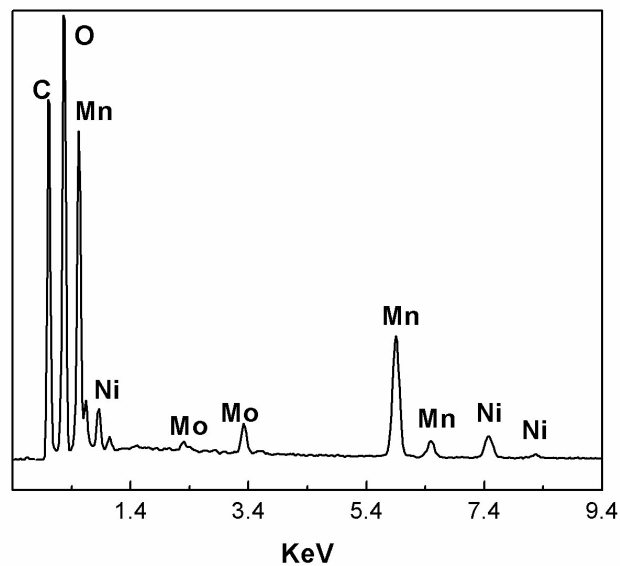


Figure S5 The EDS patterns of NiMoO₄ @ MnO₂ hybrid on carbon cloth.

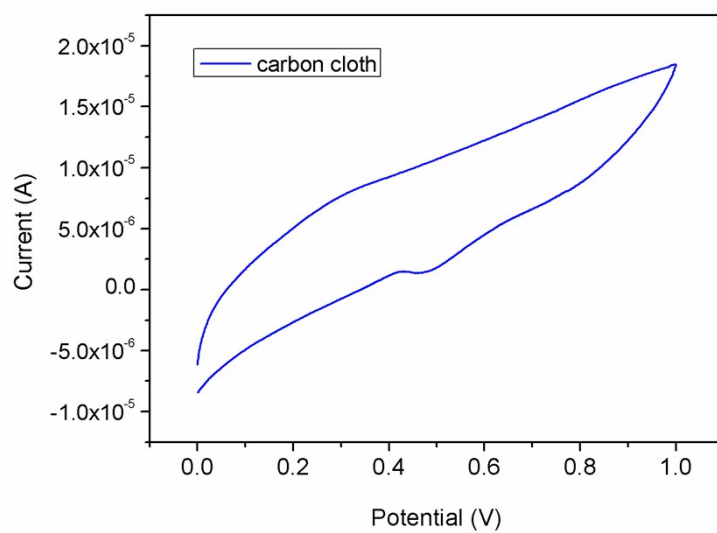


Figure S6 CV curve of the pristine carbon cloth at scan rate of 50 mV s⁻¹.

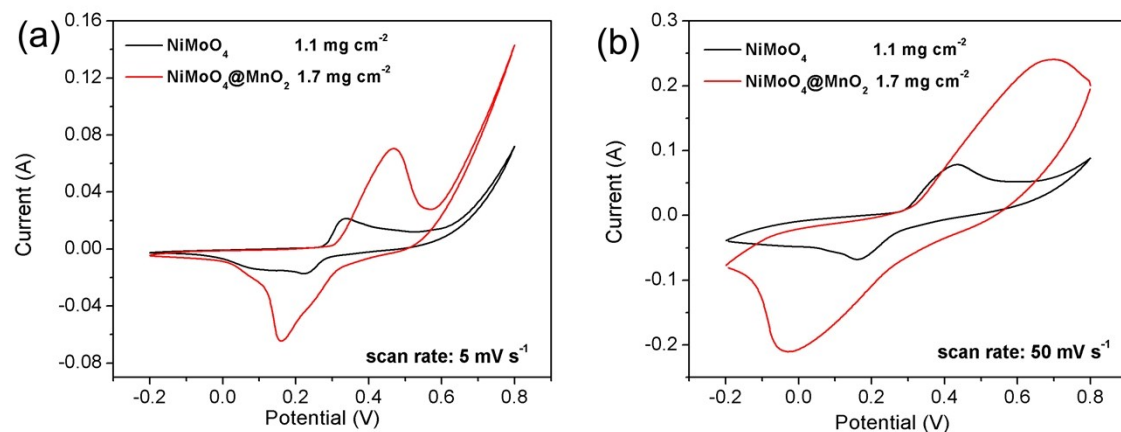


Figure S7 CV curves of NiMoO₄ NWs and NiMoO₄ @ MnO₂ hybrid electrode at scan rate of 5 mV s⁻¹ (a) and 50 mV s⁻¹ (b).

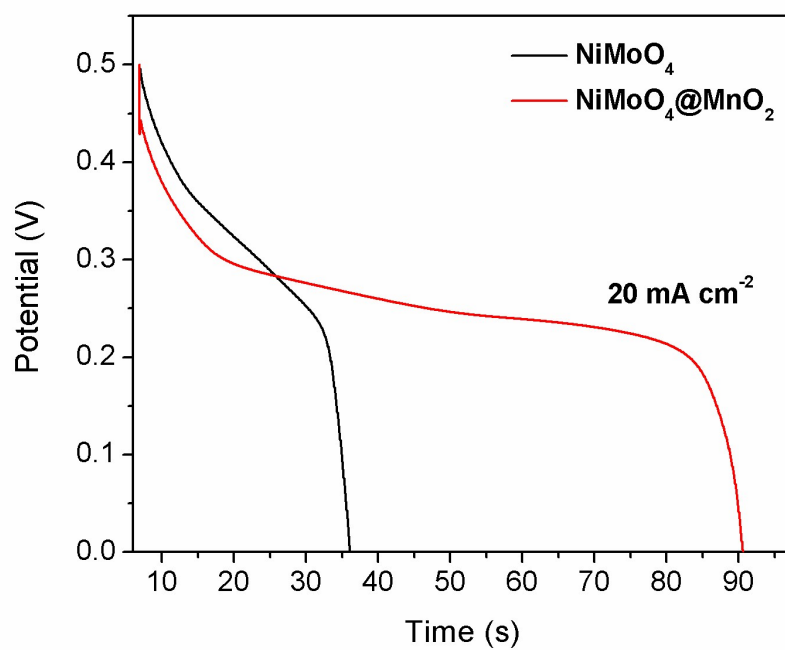


Figure S8 Galvanostatic discharge curves of NiMoO₄ NWs and NiMoO₄ @ MnO₂ hybrid electrode at current density of 20 mA cm⁻².

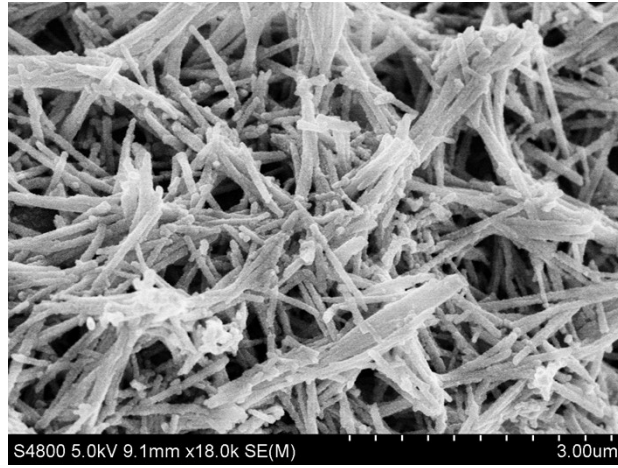


Figure S9 SEM image of the NiMoO₄ @ MnO₂ hybrid electrode after 4000 cycles.