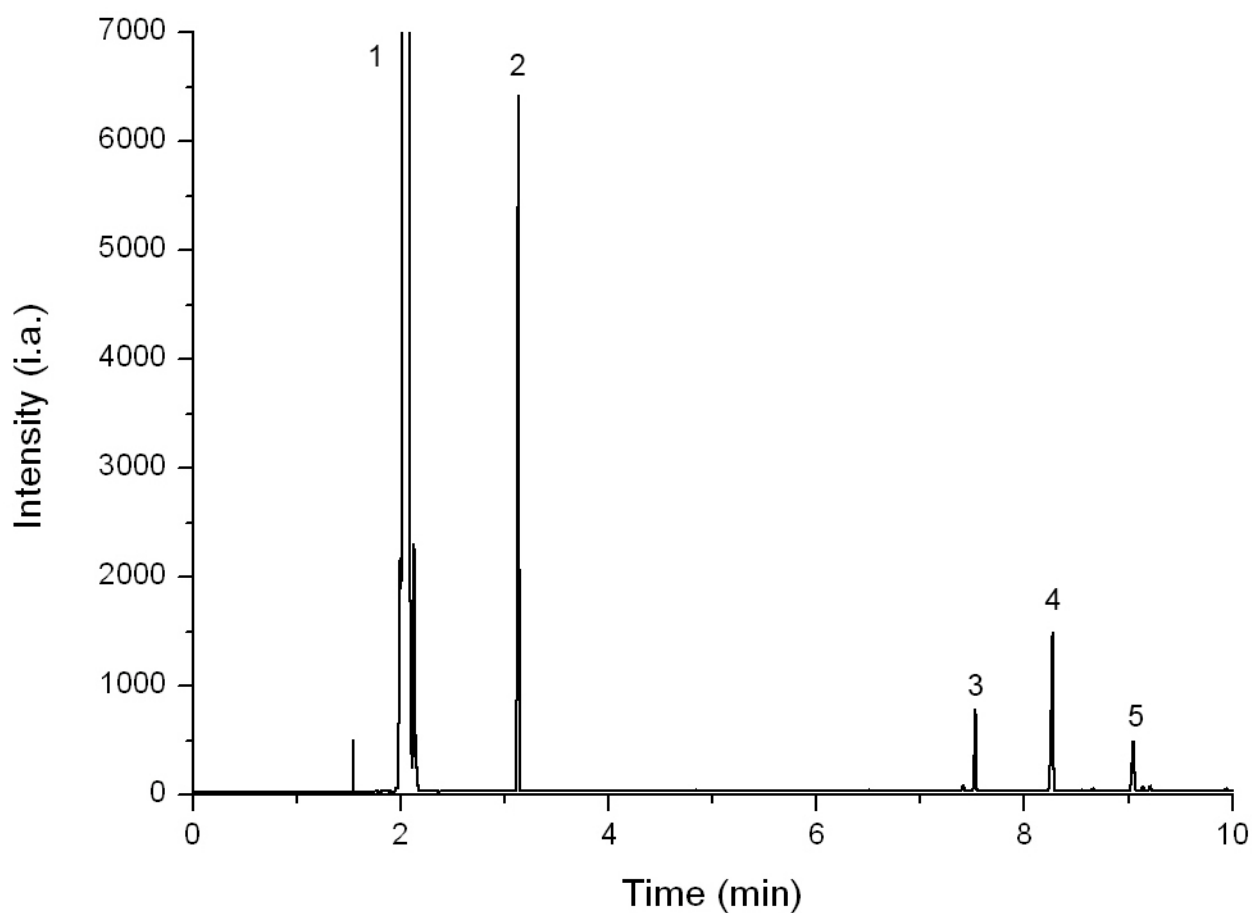
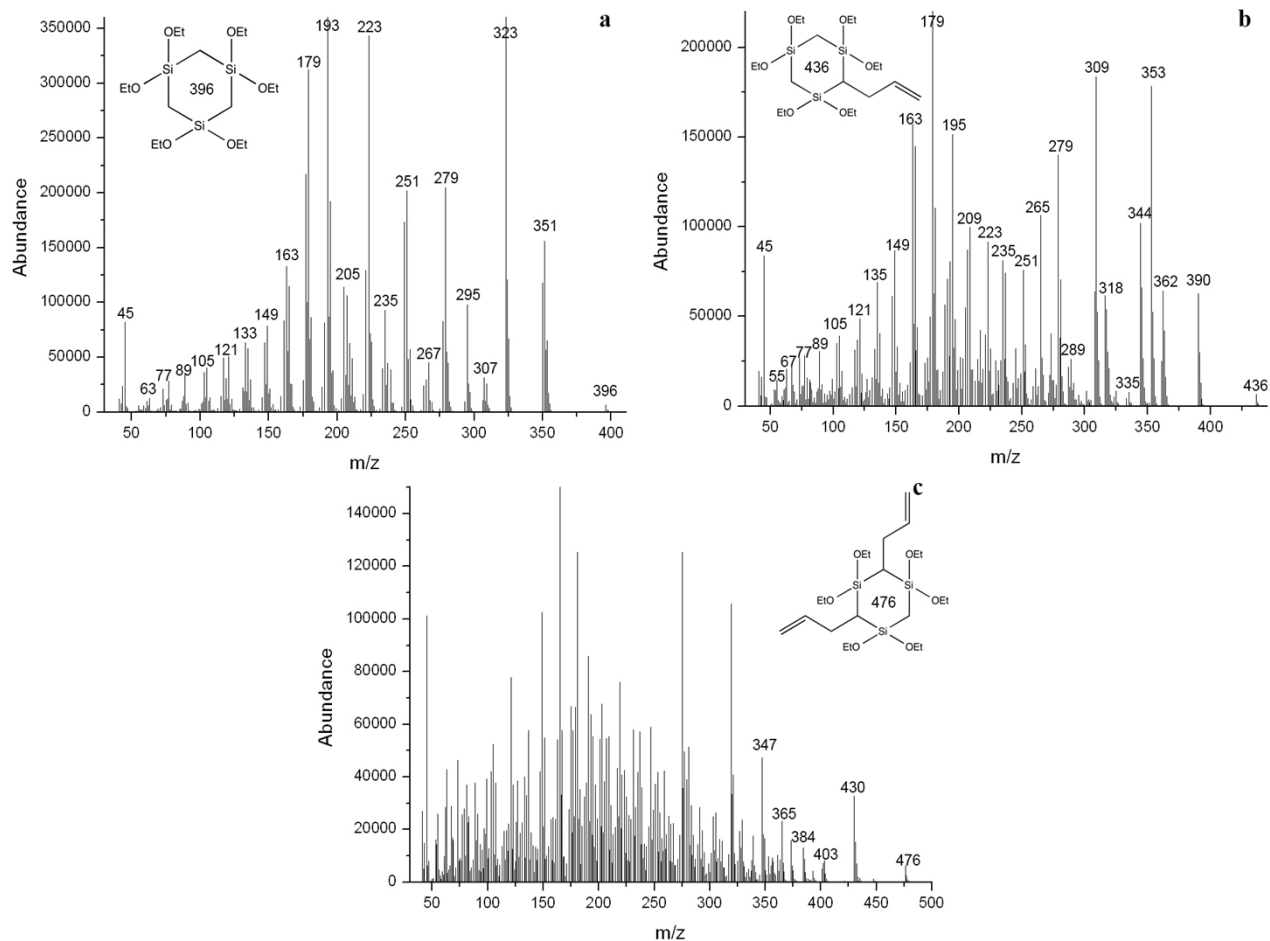


SUPPLEMENTARY INFORMATION

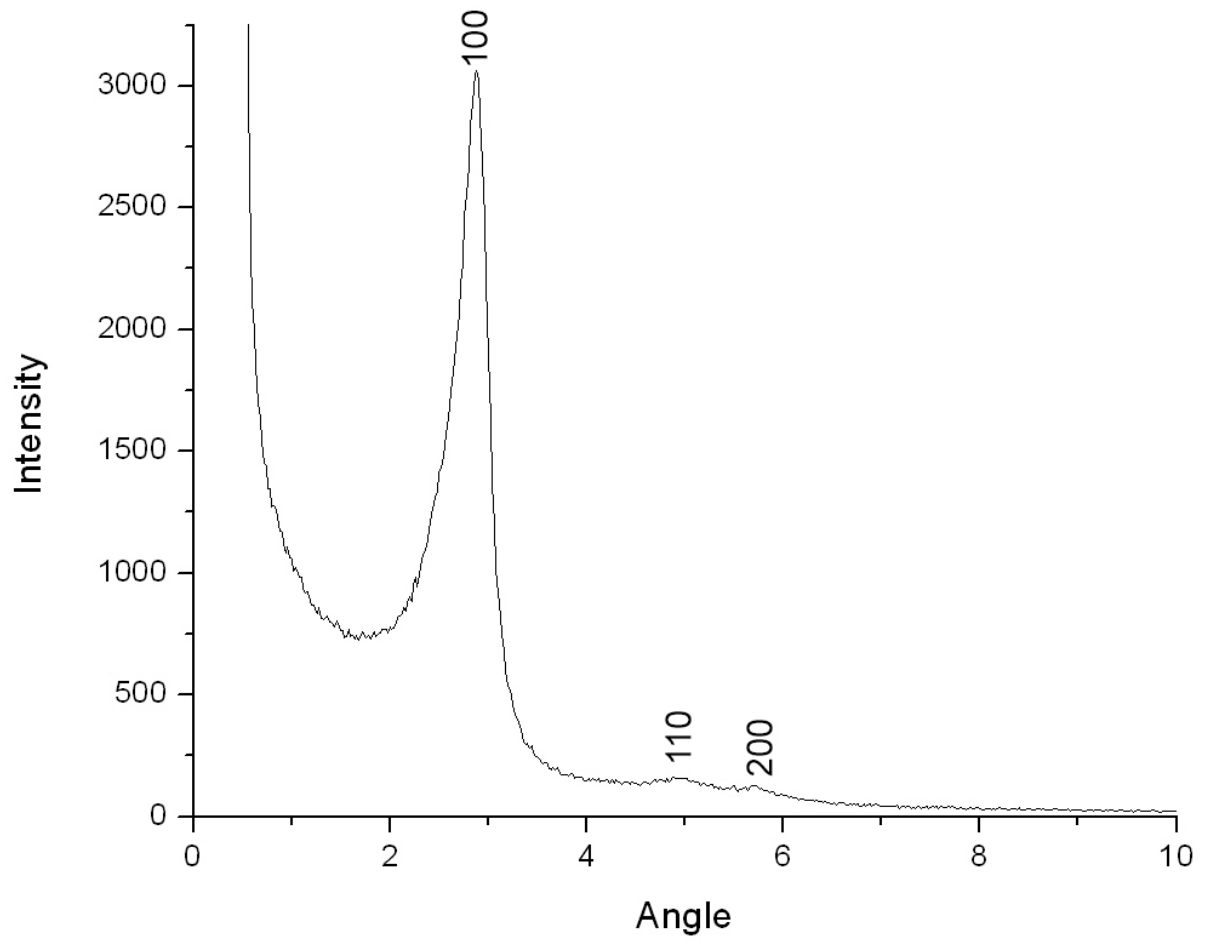
**Figure 1.** GC-FID chromatogram of the silane mixture. Components: hexane (1), p-xylene (2), 1,3,5-tris[diethoxysila]cyclohexane (3), allyl-1,3,5-tris[diethoxysila]cyclohexane (4) and bis-allyl-1,3,5-tris[diethoxysila]cyclohexane (5).



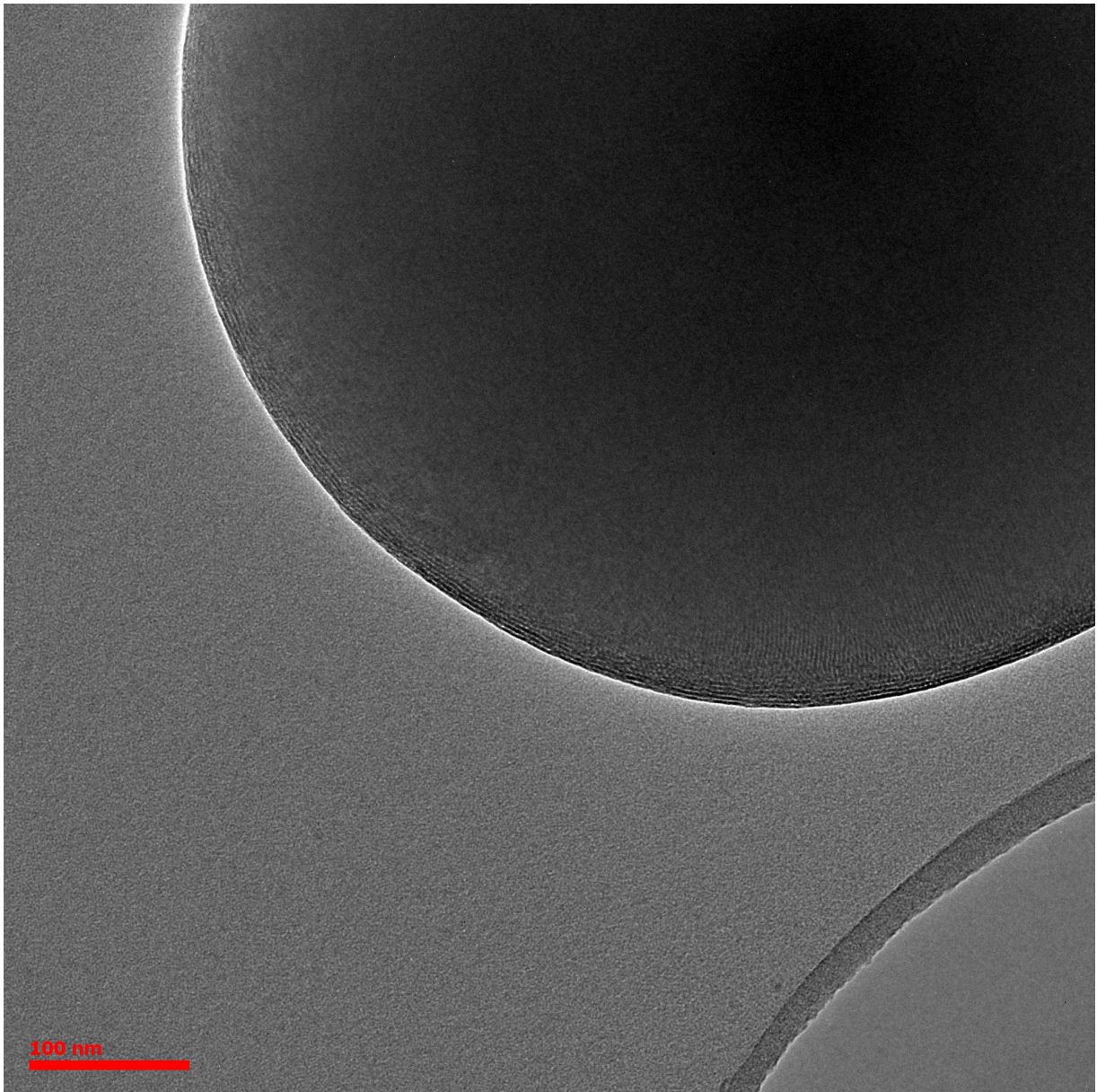
**Figure 2.** MS spectra of 1,3,5-tris[diethoxysila]cyclohexane (a), allyl-1,3,5-tris[diethoxysila]cyclohexane (b) and bis-allyl-1,3,5-tris[diethoxysila]cyclohexane (c).



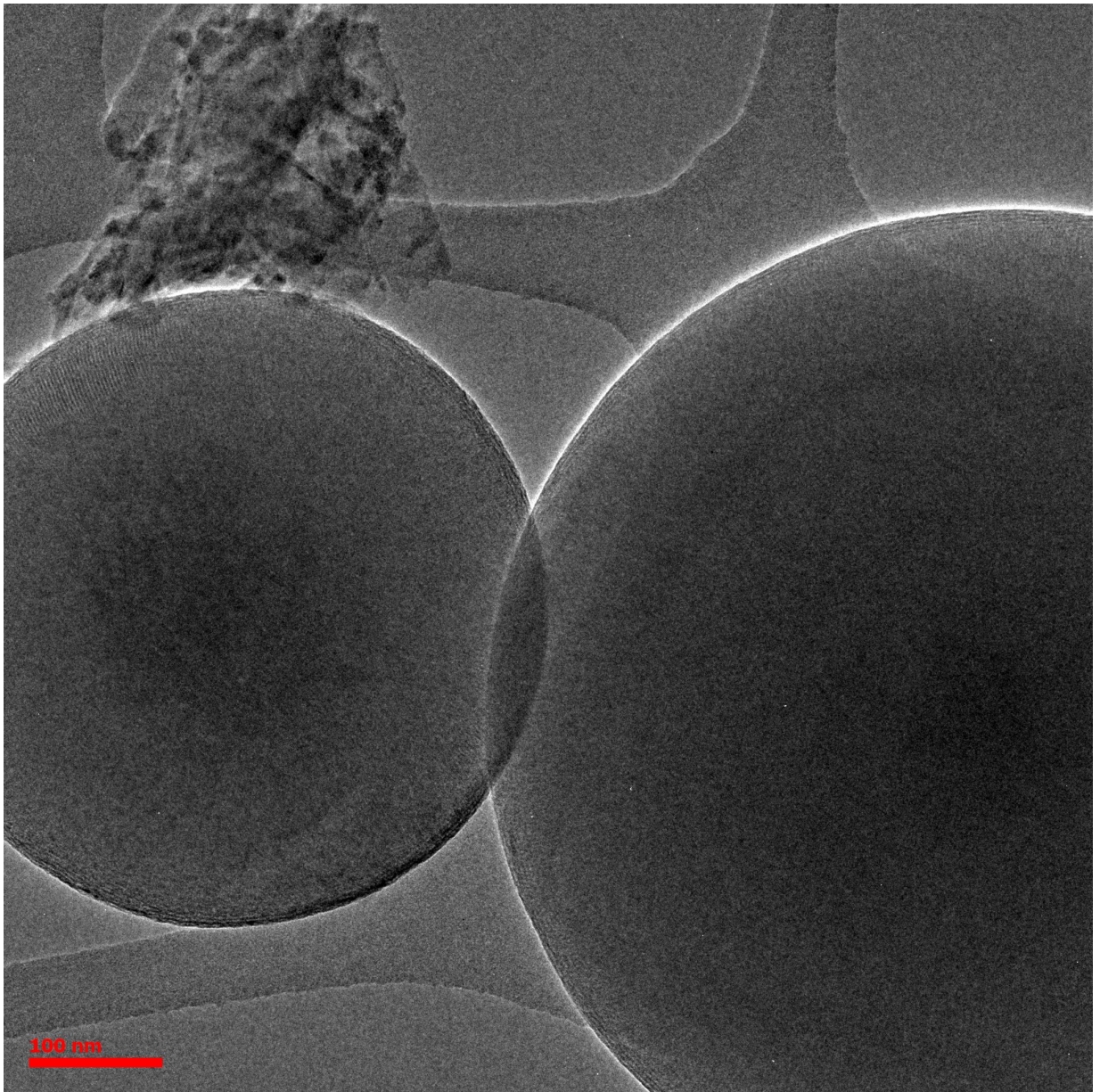
**Figure 3.** XRD-diffractogram of the spray dried particles.



**Figure 4.** TEM micrographs depicting the particle pore structure.







**Scheme 1.** Thiolene-click of octadecane thiol on allyl functionalized organosilica particles.

