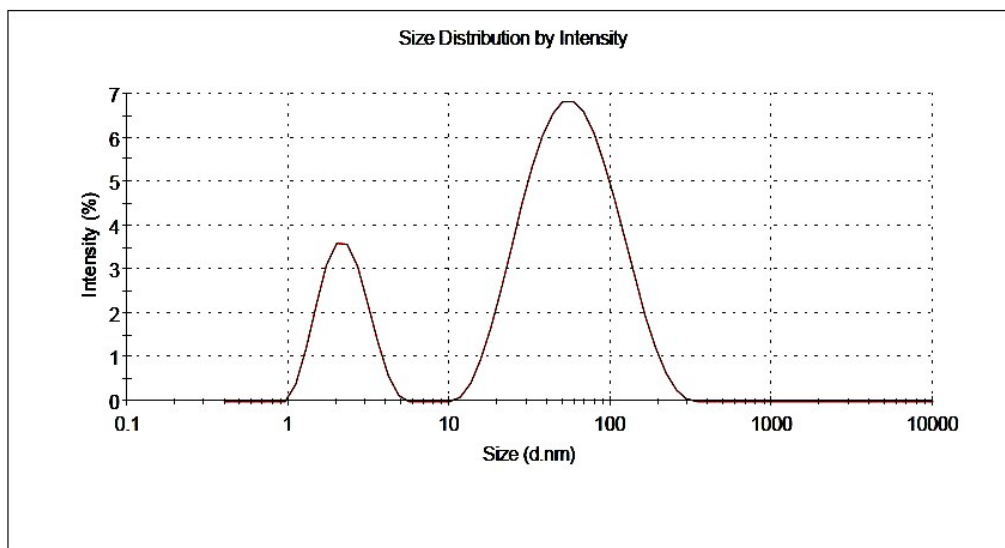


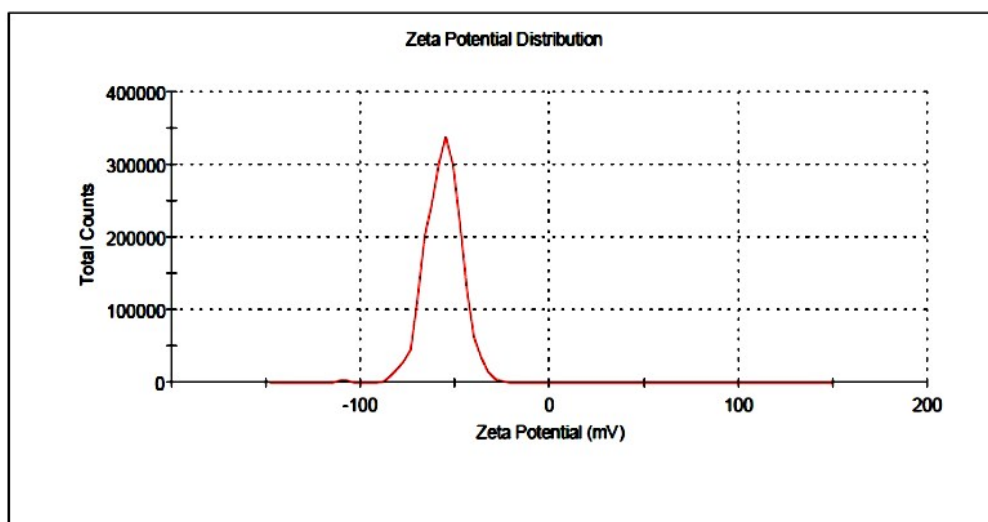
### Supplementary Figures:

	Size (d.nm):	% Intensity	Width (d.nm)
<b>Z-Average (d.nm):</b> 19.58	<b>Peak 1:</b> 67.39	78.6	43.17
<b>Pdl:</b> 0.768	<b>Peak 2:</b> 2.308	21.4	0.7418
<b>Intercept:</b> 0.786	<b>Peak 3:</b> 0.000	0.0	0.000



A

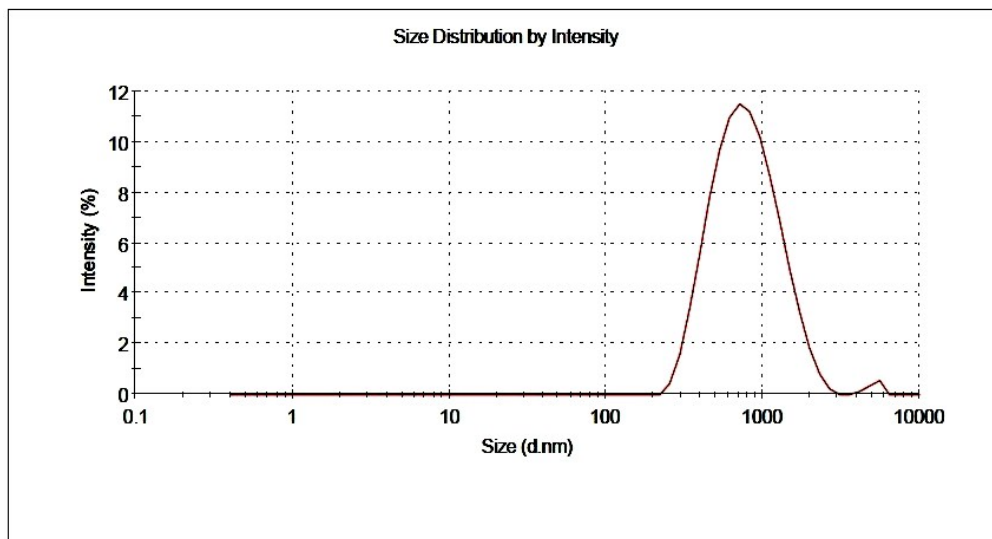
	Mean (mV)	Area (%)	Width (mV)
<b>Zeta Potential (mV):</b> -56.3	<b>Peak 1:</b> -56.2	99.7	9.47
<b>Zeta Deviation (mV):</b> 9.88	<b>Peak 2:</b> -109	0.3	1.86
<b>Conductivity (mS/cm):</b> 1.25	<b>Peak 3:</b> 0.00	0.0	0.00



B

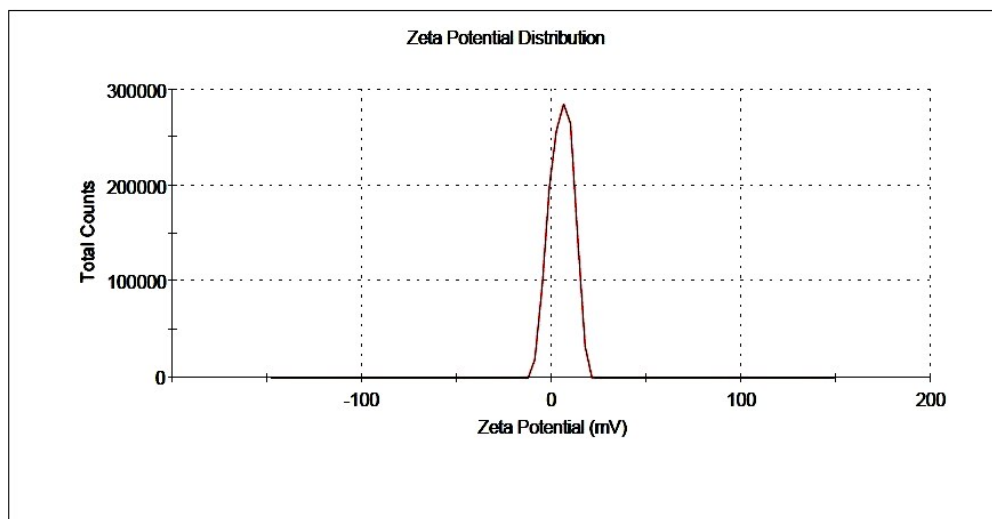
Fig. S1

	Size (d.nm):	% Intensity	Width (d.n...
<b>Z-Average (d.nm):</b> 657.5	<b>Peak 1:</b> 850.2	99.0	413.9
<b>Pdl:</b> 0.254	<b>Peak 2:</b> 5126	1.0	509.7
<b>Intercept:</b> 0.854	<b>Peak 3:</b> 0.000	0.0	0.000



A

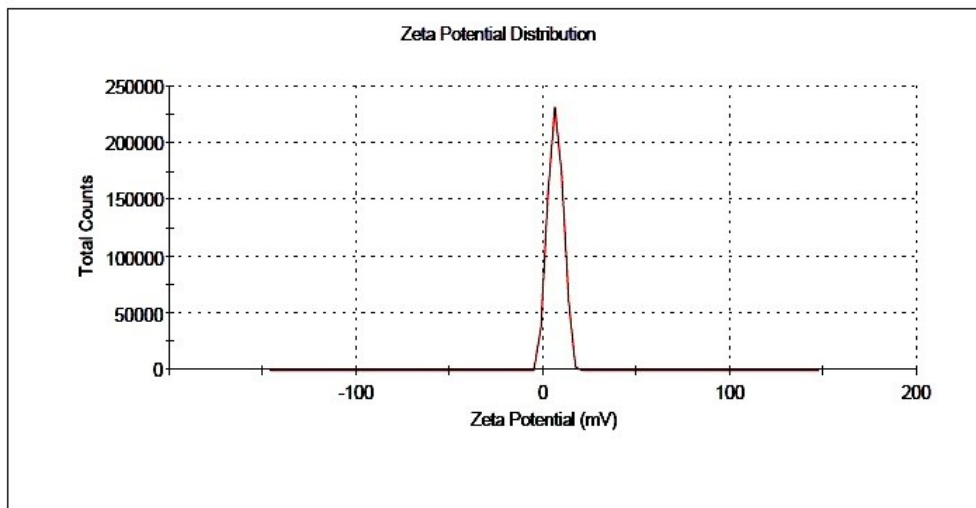
	Mean (mV)	Area (%)	Width (mV)
<b>Zeta Potential (mV):</b> 5.22	<b>Peak 1:</b> 5.22	100.0	5.97
<b>Zeta Deviation (mV):</b> 5.97	<b>Peak 2:</b> 0.00	0.0	0.00
<b>Conductivity (mS/cm):</b> 2.58	<b>Peak 3:</b> 0.00	0.0	0.00



B

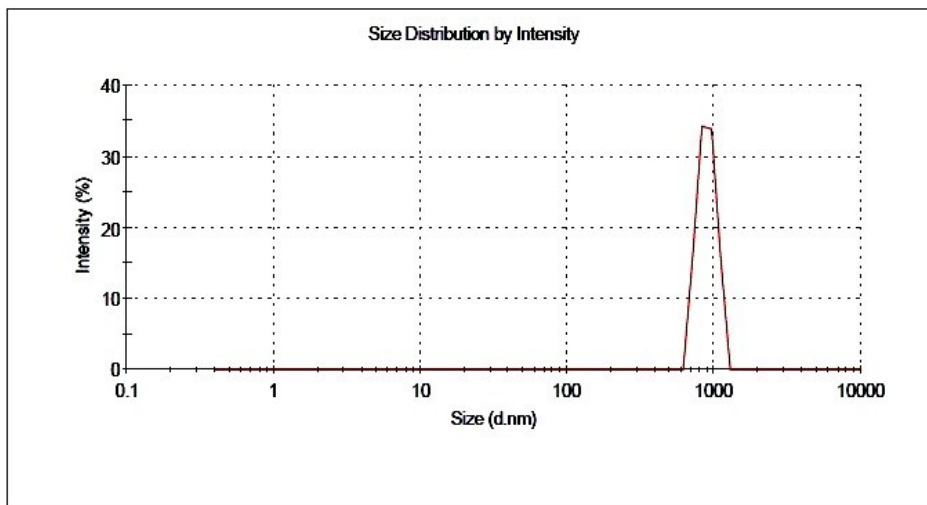
Fig. S2

	Mean (mV)	Area (%)	Width (mV)
<b>Zeta Potential (mV):</b> 6.74	Peak 1: 6.74	100.0	3.94
<b>Zeta Deviation (mV):</b> 3.94	Peak 2: 0.00	0.0	0.00
<b>Conductivity (mS/cm):</b> 2.56	Peak 3: 0.00	0.0	0.00



A

	Size (d.nm):	% Intensity	Width (d.n...)
<b>Z-Average (d.nm):</b> 1484	Peak 1: 895.3	100.0	123.9
<b>Pdl:</b> 0.443	Peak 2: 0.000	0.0	0.000
<b>Intercept:</b> 0.898	Peak 3: 0.000	0.0	0.000



B

Fig. S3