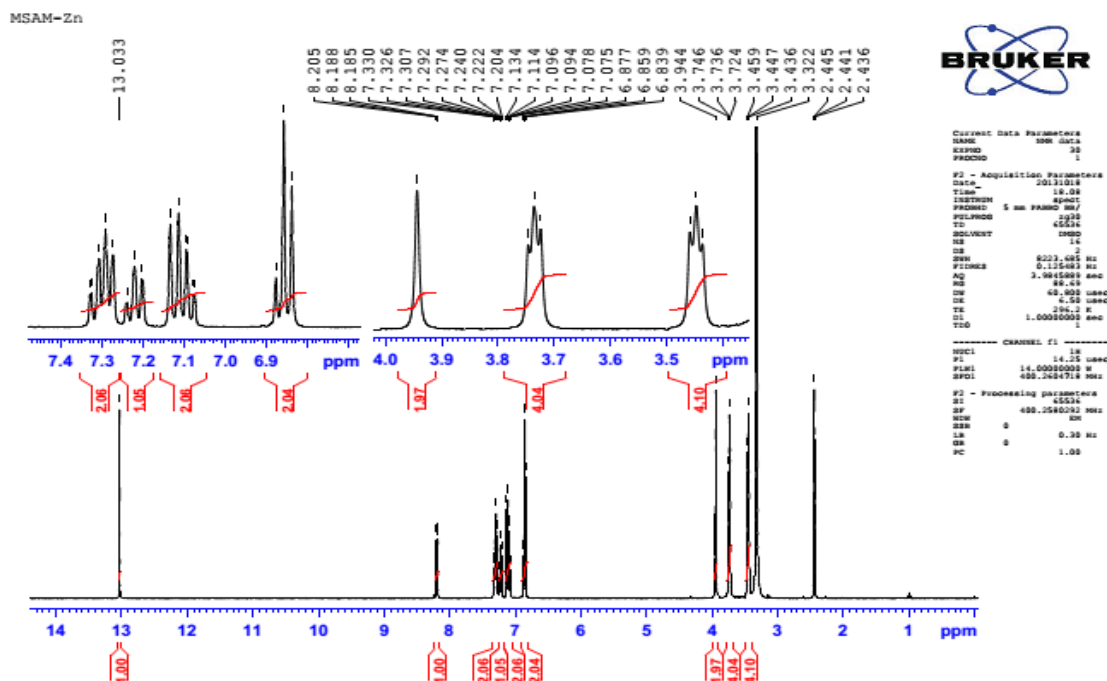
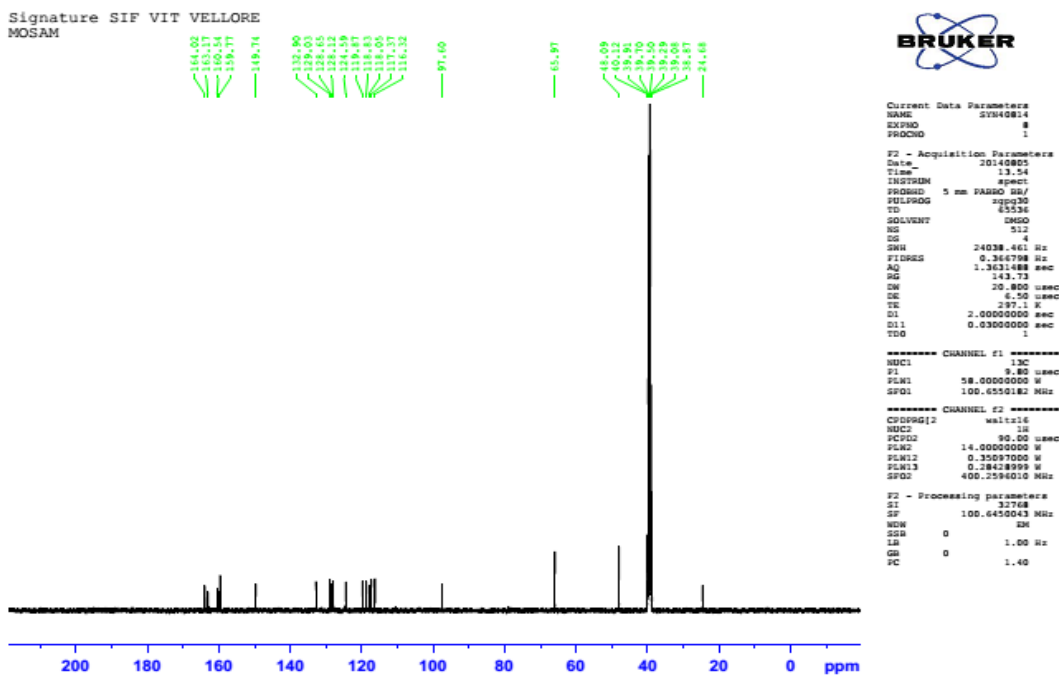


¹H-NMR spectrum of 4a

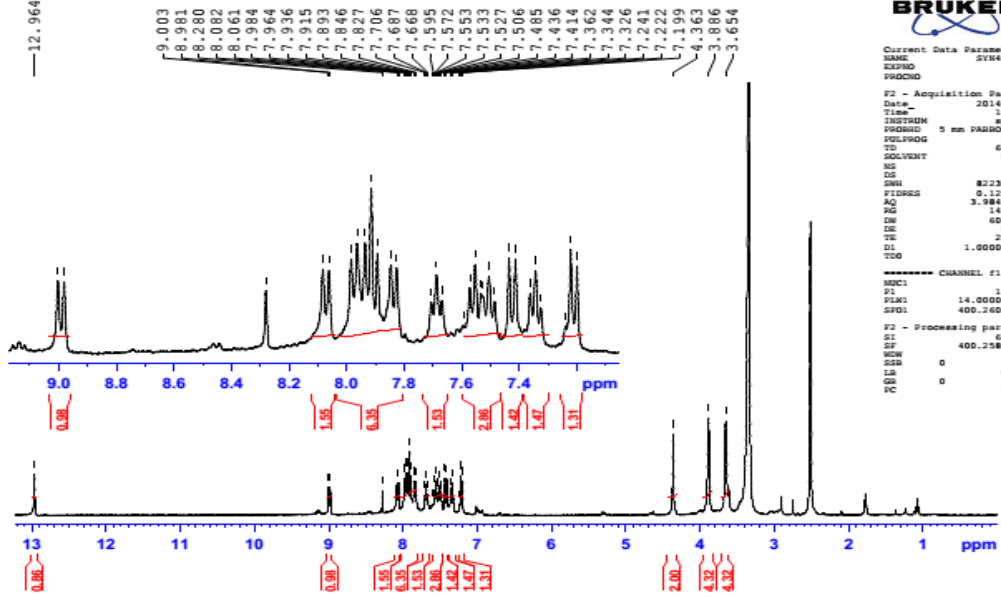


¹³C-NMR spectrum of 4a



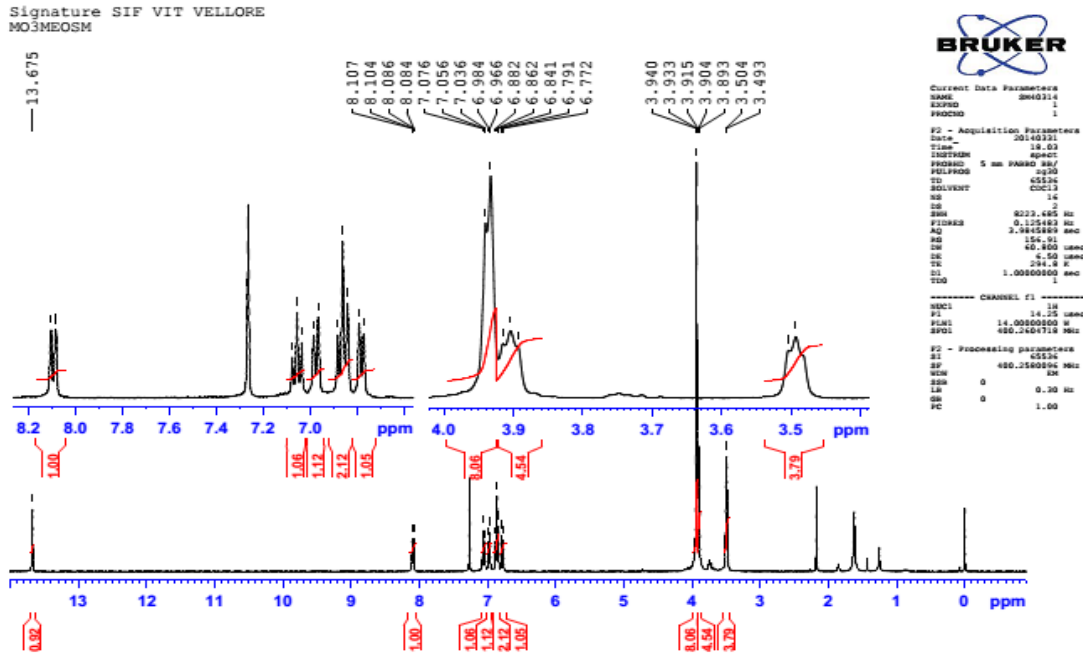
¹H-NMR spectrum of 4b

Signature SIF VIT VELLORE
MONPSM

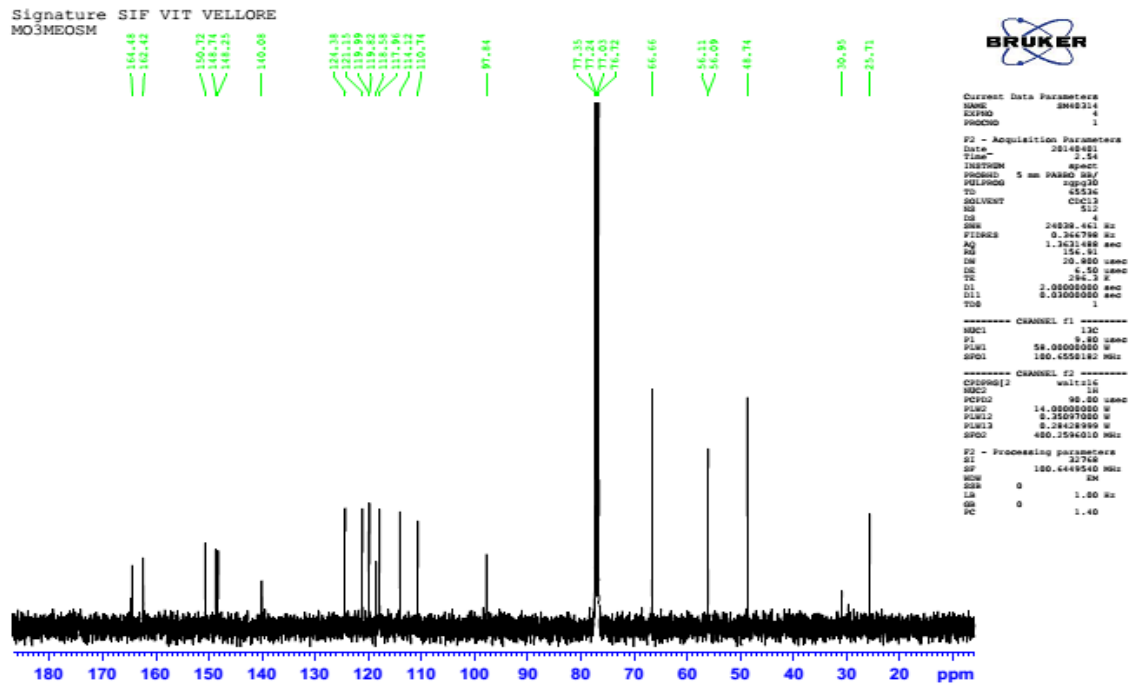


Current Data Parameters
 NAME: 20140414
 EXPNO: 66
 PROCNO: 1
 F2 - Acquisition Parameters
 Date_: 20140410
 Time: 10.10
 INSTRUM: spect
 PROBRD: 5 mm PABBO BB/
 PULPROG: zg30
 TD: 65536
 SOLVENT: DMSO
 NS: 16
 DS: 2
 SSB: 0
 FIDRES: 0.223685 Hz
 AQ: 0.125483 Hz
 RG: 3.1843883 sec
 PG: 143.73
 DM: 60.800 usec
 DE: 6.50 usec
 TE: 296.3 K
 D1: 1.00000000 sec
 TDO: 1
 ----- CHANNEL f1 -----
 NUC1: 1H
 P1: 14.25 usec
 PL1: 14.0000000 W
 SFO1: 400.2604718 MHz
 F2 - Processing parameters
 SI: 65536
 SF: 400.260000 MHz
 WDW: EM
 SSB: 0
 LB: 0.30 Hz
 GB: 0
 PC: 1.00

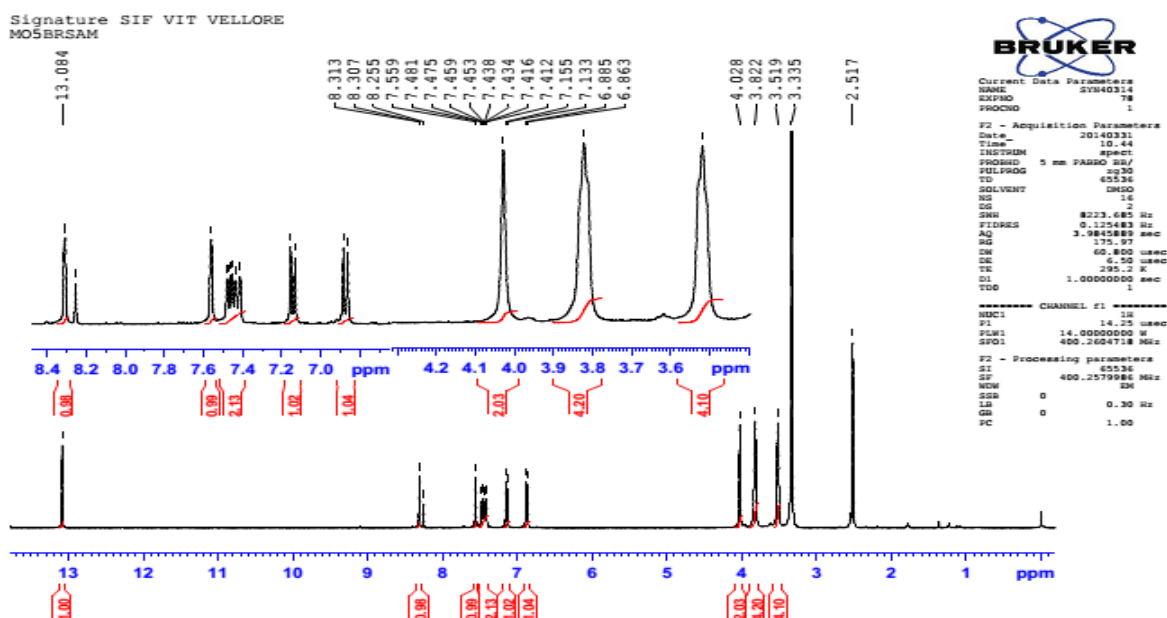
¹H-NMR spectrum of 4c



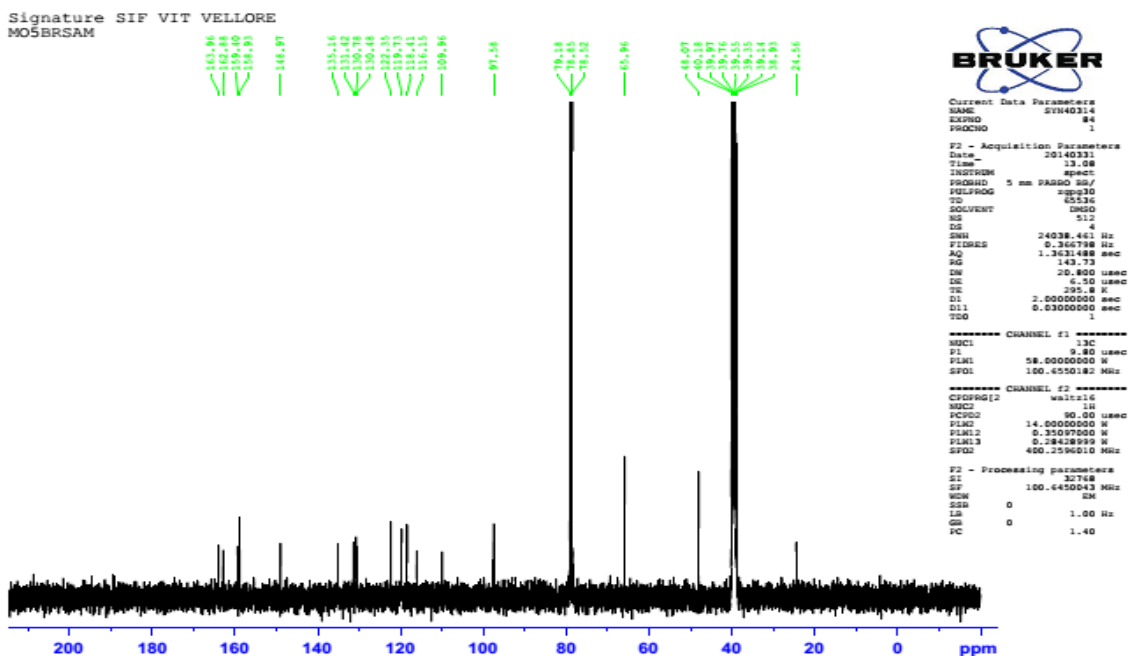
¹³C-NMR spectrum of 4c



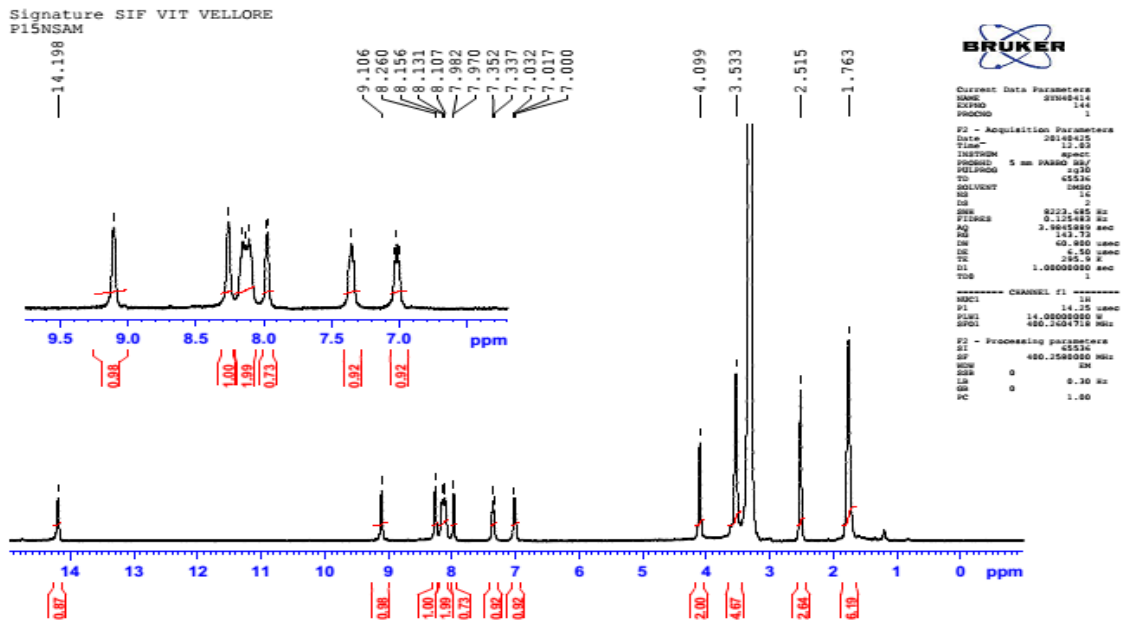
¹H-NMR spectrum of 4e



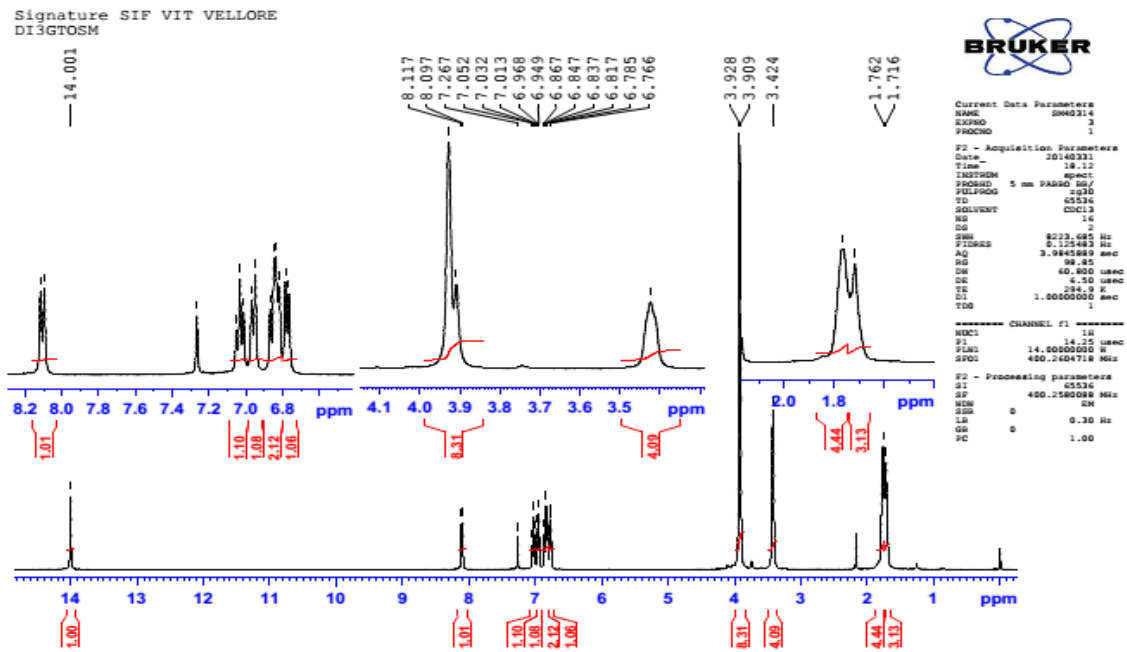
¹³C-NMR spectrum of 4e



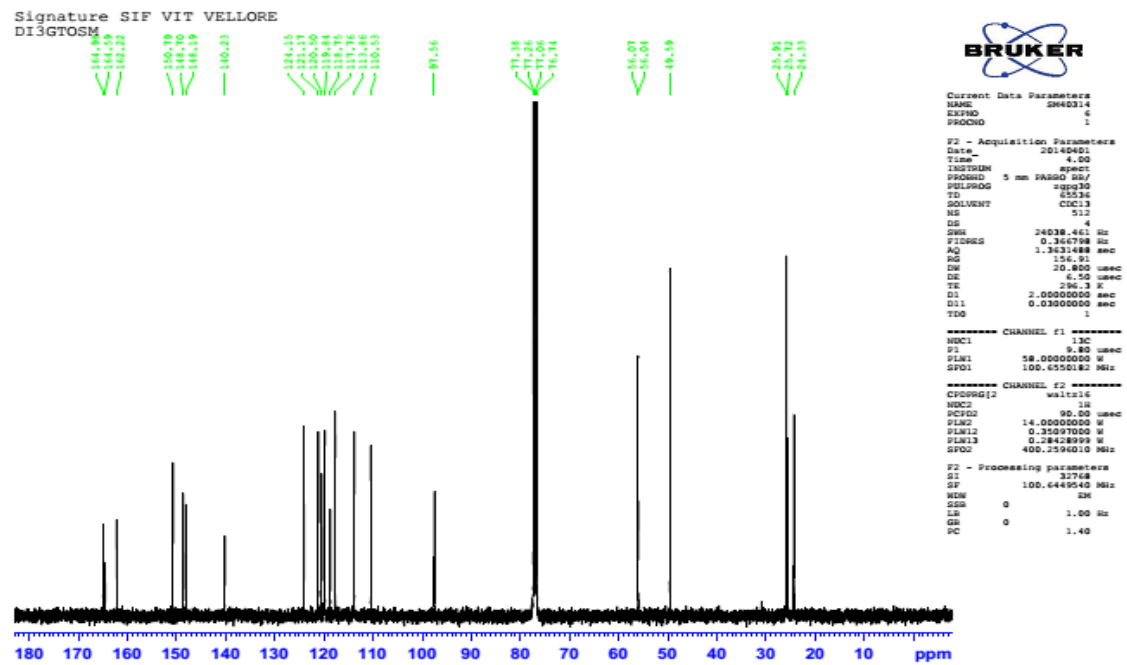
¹H-NMR spectrum of 4f



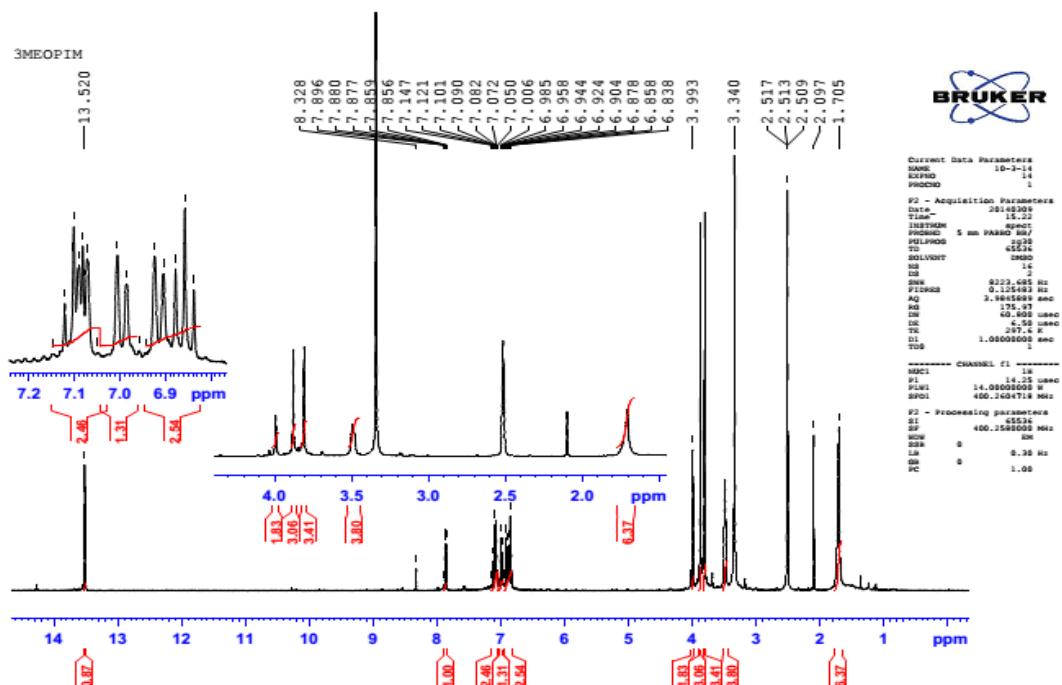
¹H-NMR spectrum of 4h



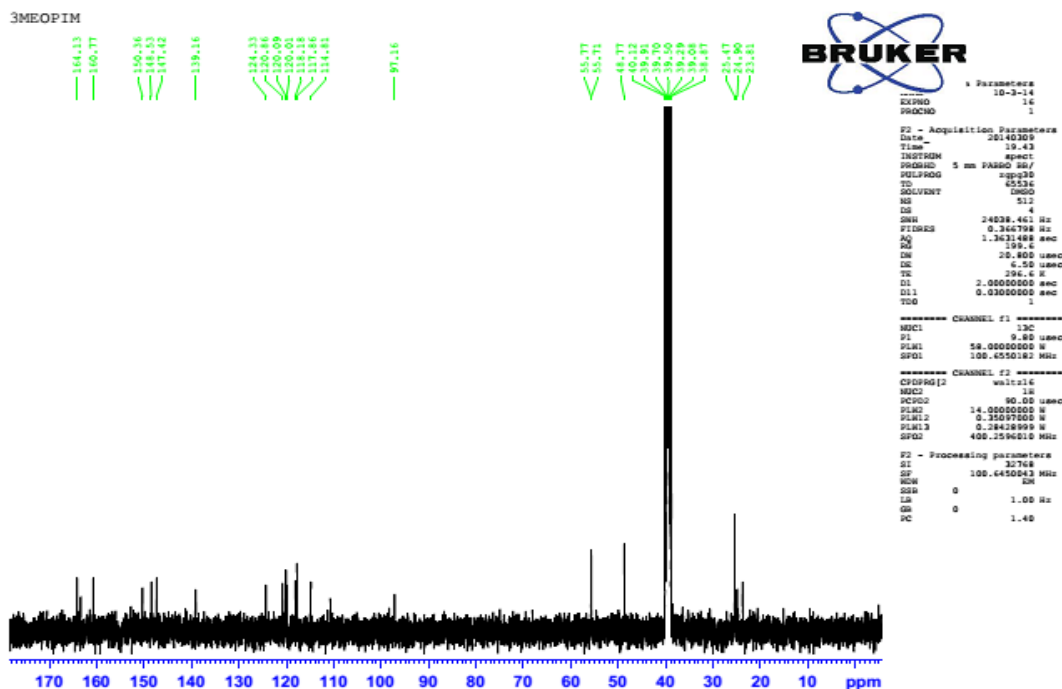
¹³C-NMR spectrum of 4h



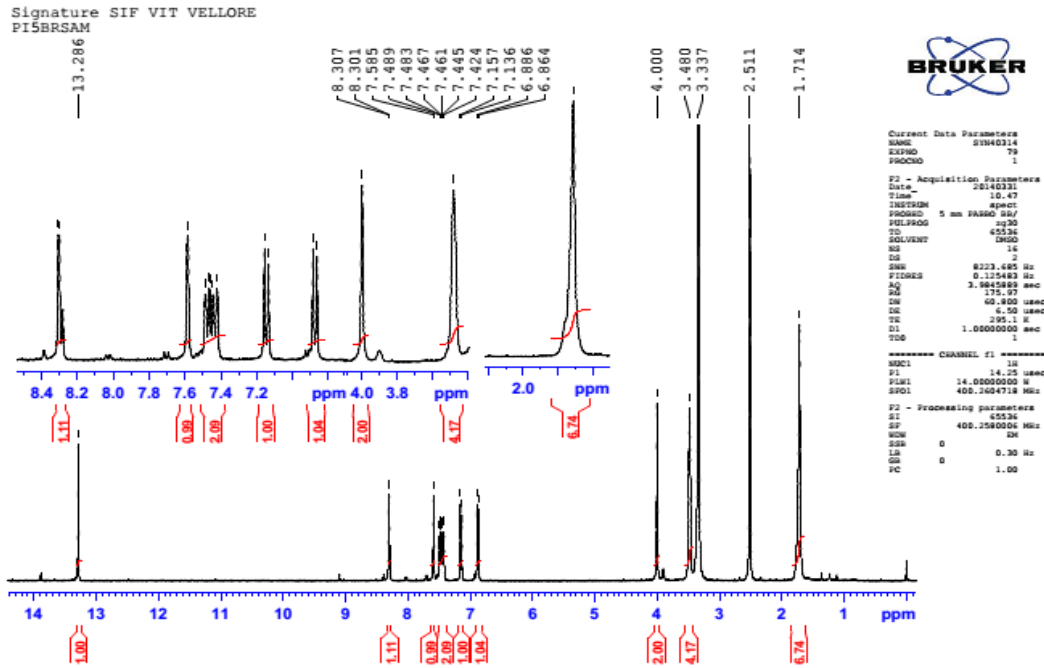
¹H-NMR spectrum of 4i



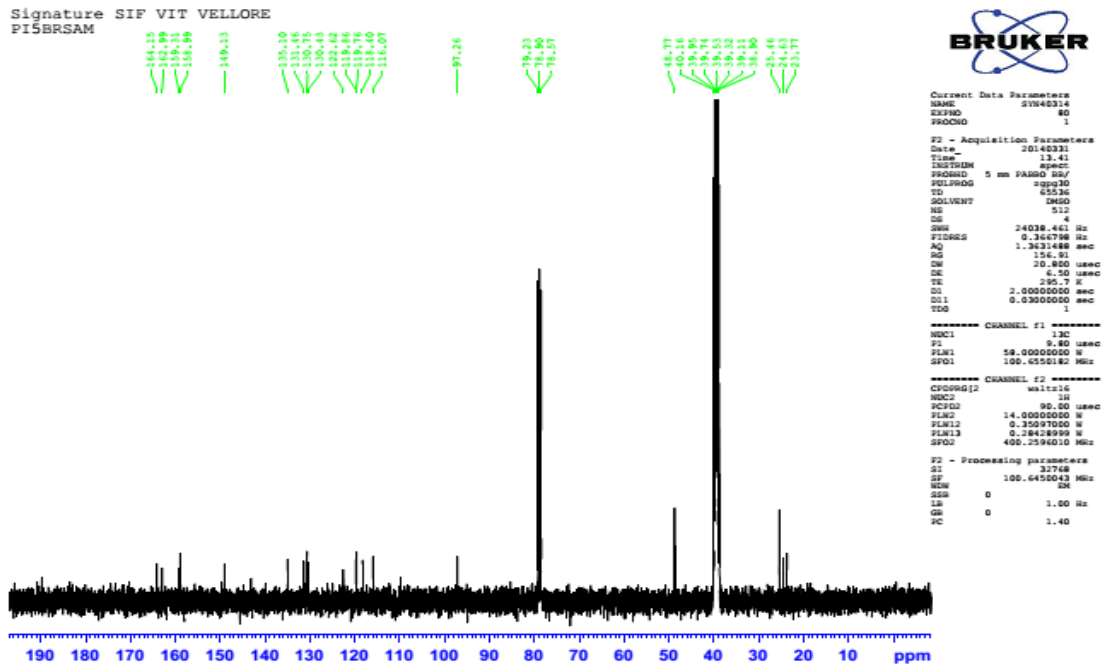
¹³C-NMR spectrum of 4i



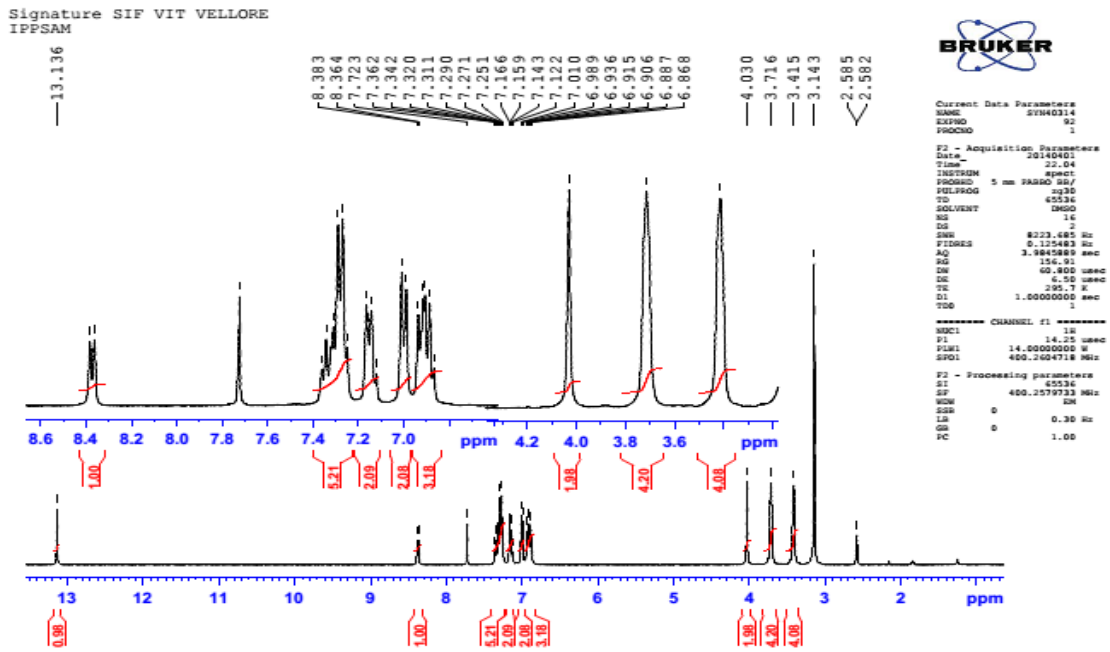
¹H-NMR spectrum of 4j



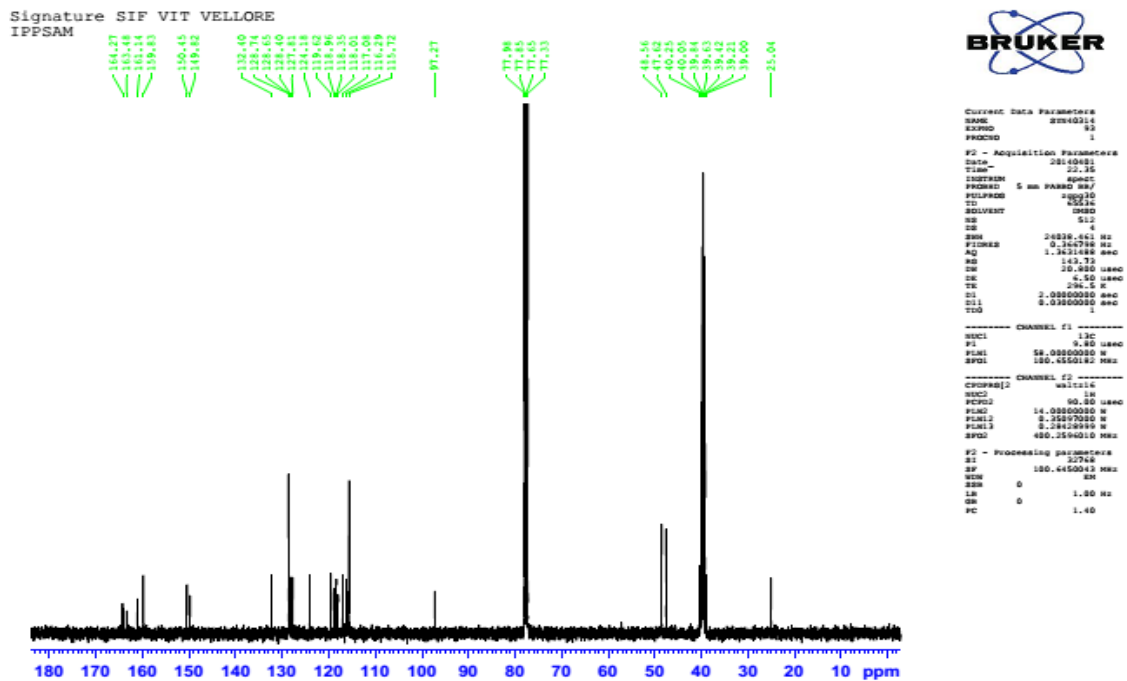
¹³C-NMR spectrum of 4j



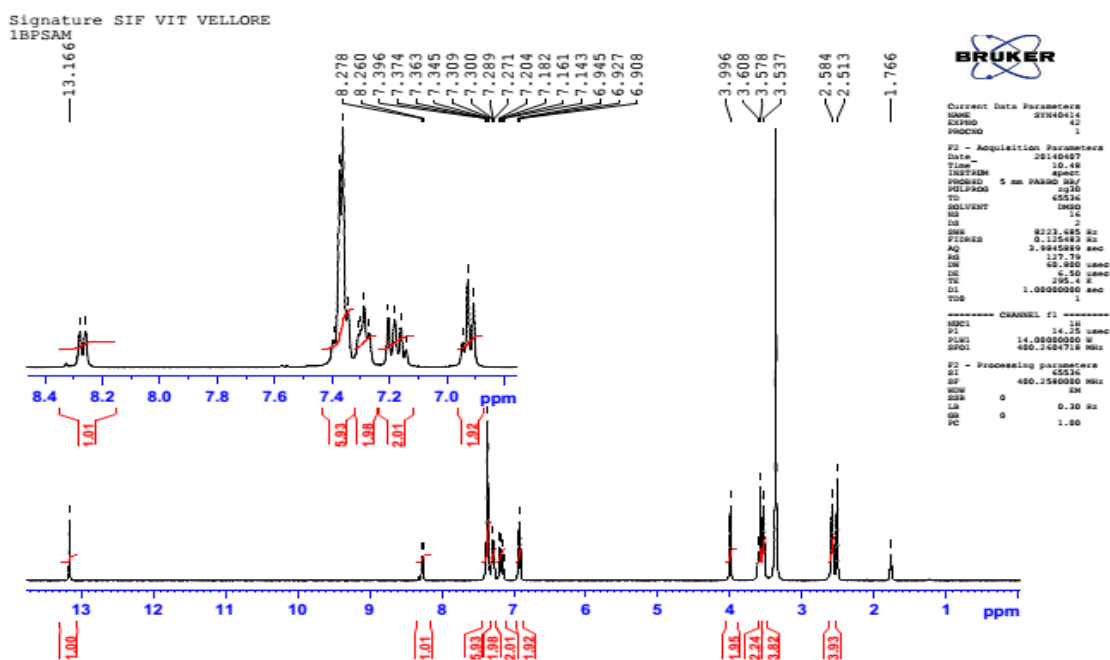
¹H-NMR spectrum of 4k



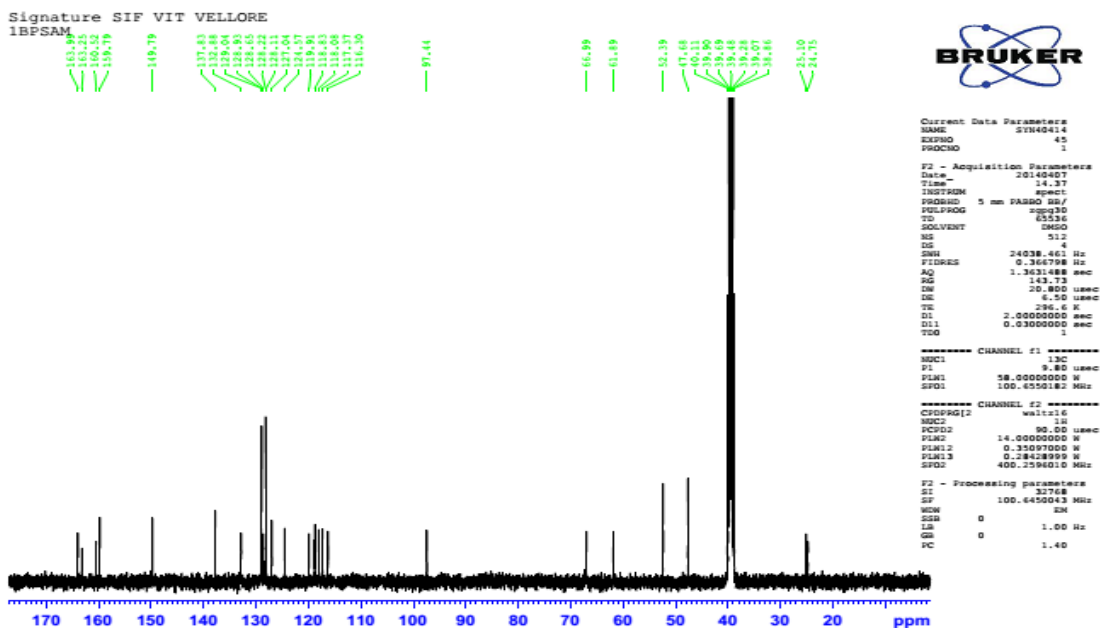
¹³C-NMR spectrum of 4k



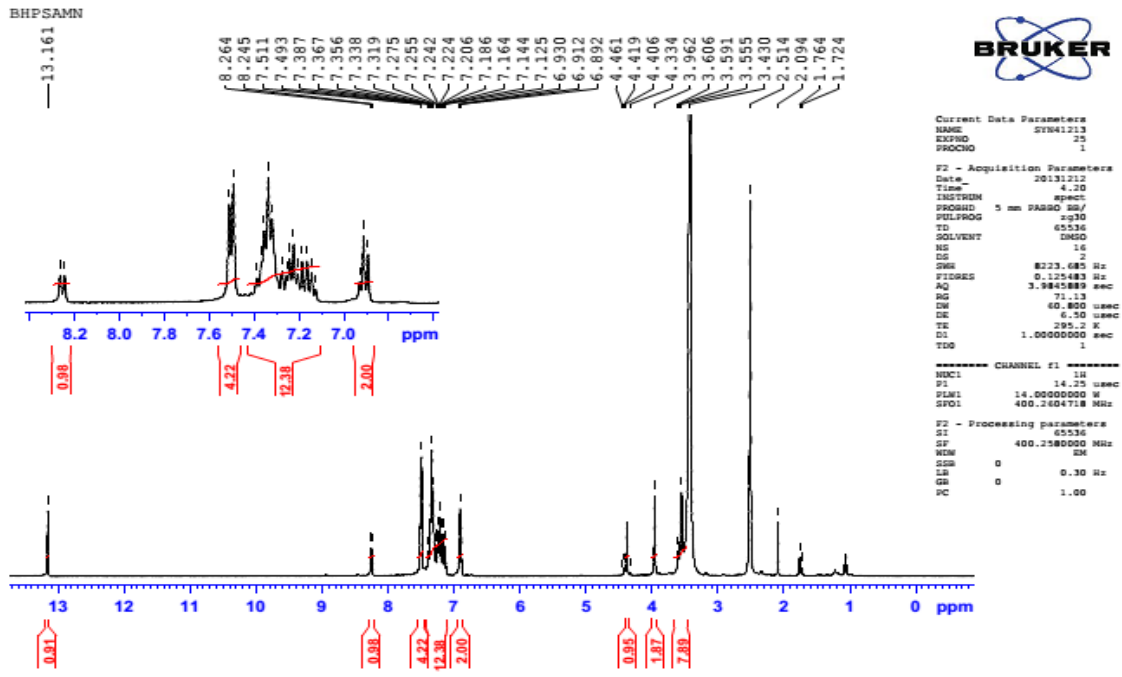
¹H-NMR spectrum of 4l



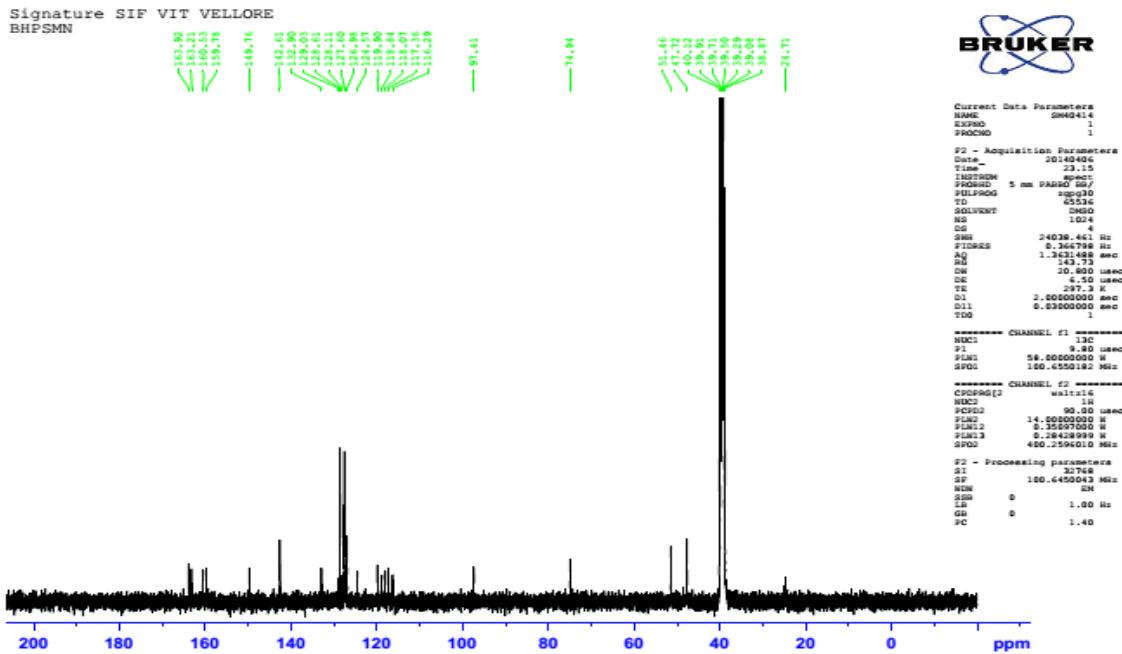
¹³C-NMR spectrum of 4l



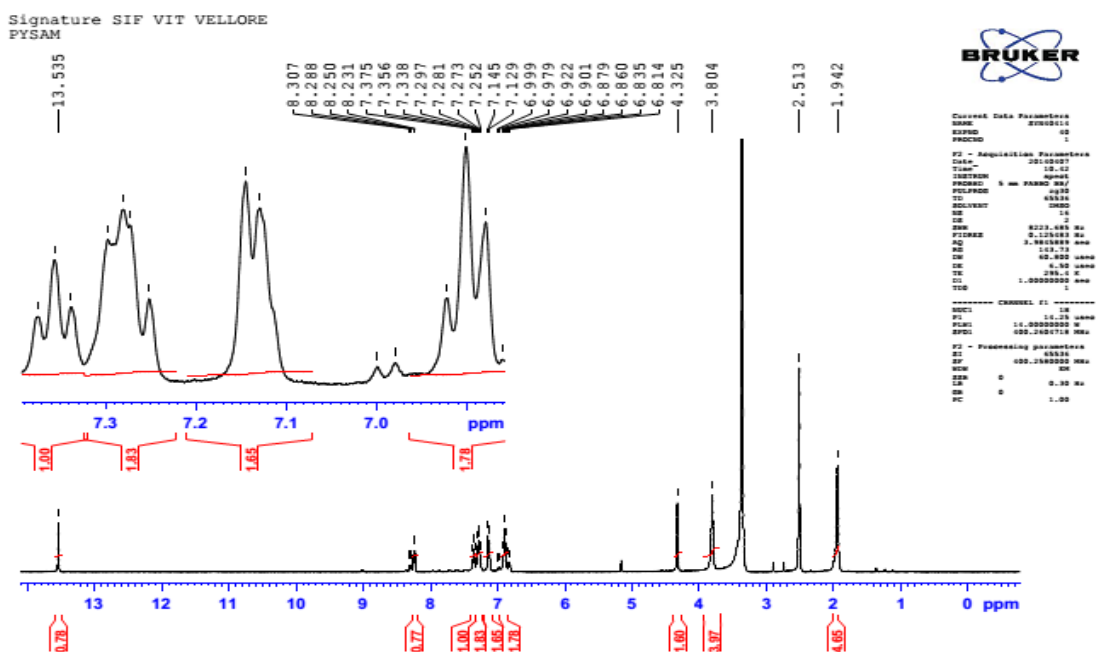
¹H-NMR spectrum of 4m



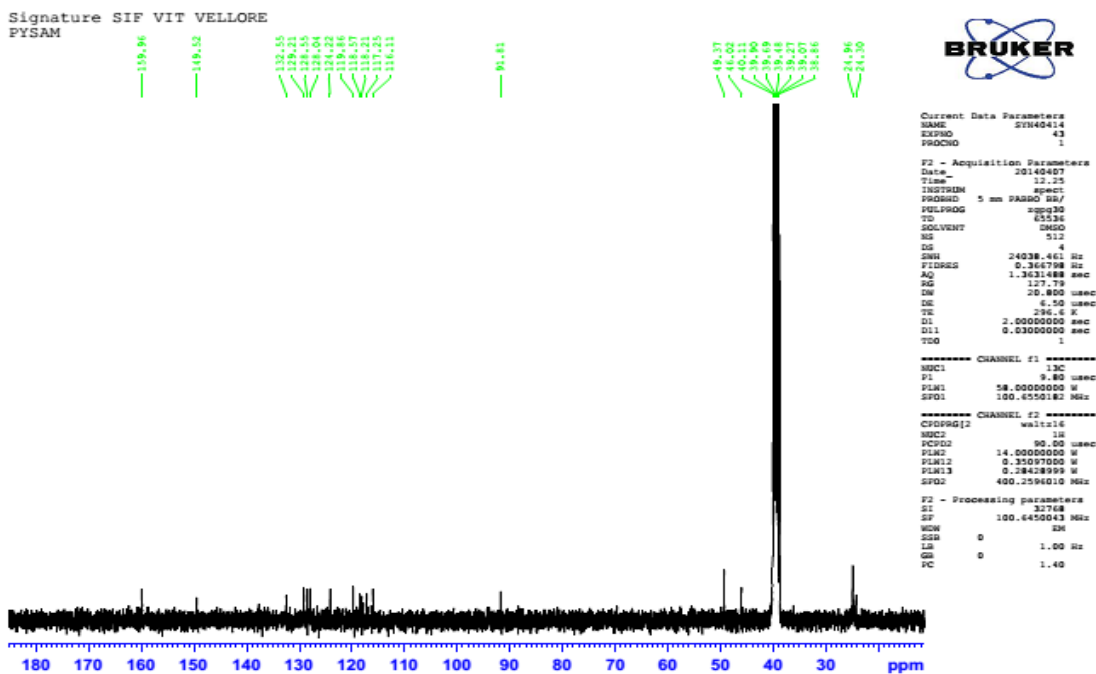
¹³C-NMR spectrum of 4m



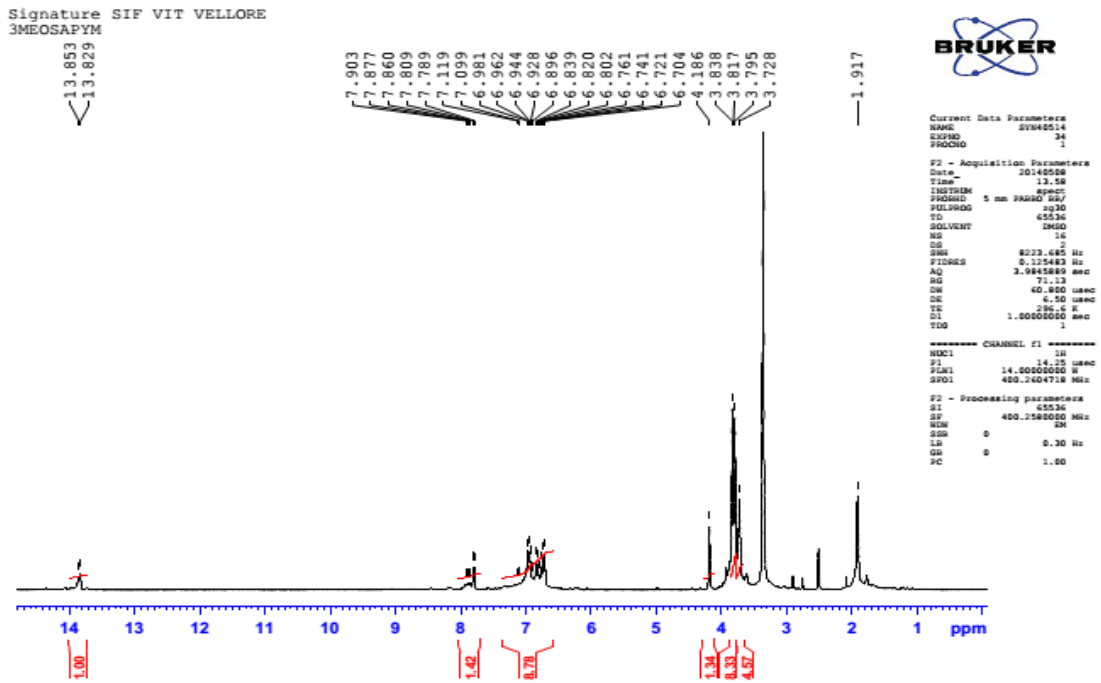
¹H-NMR spectrum of 4n



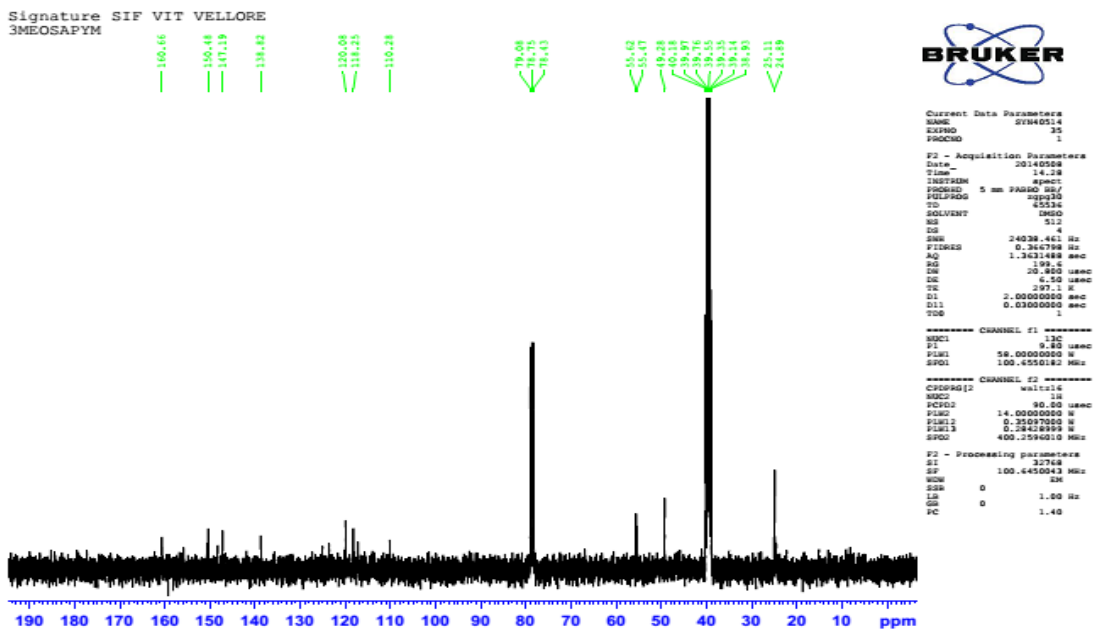
¹³C-NMR spectrum of 4n



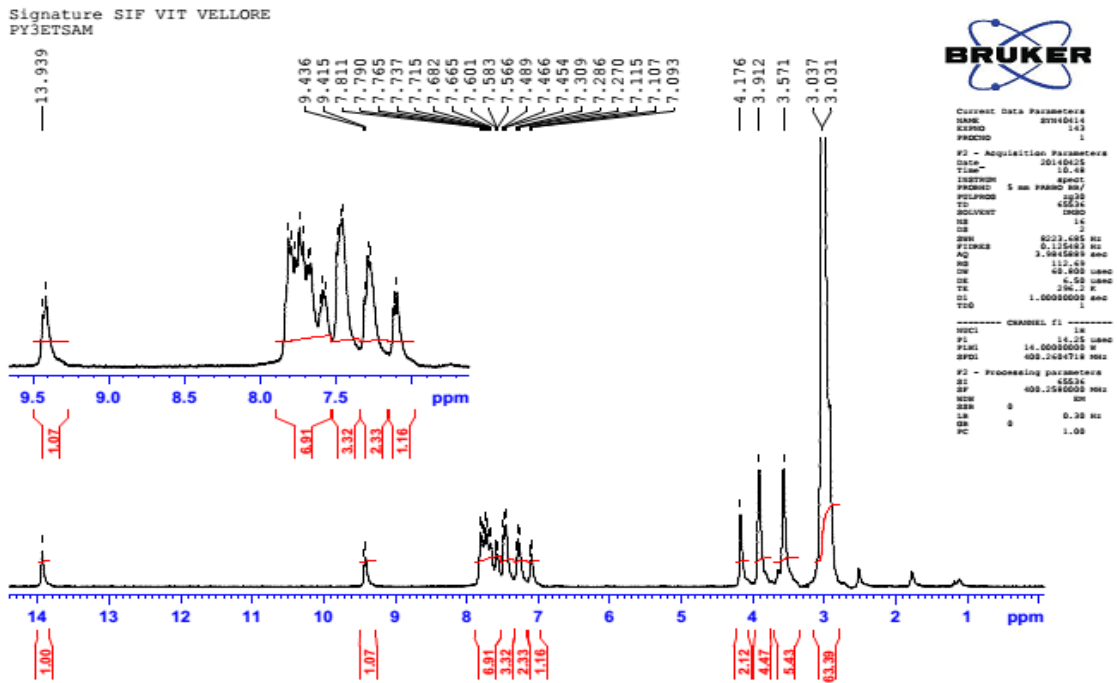
¹H-NMR spectrum of 4o



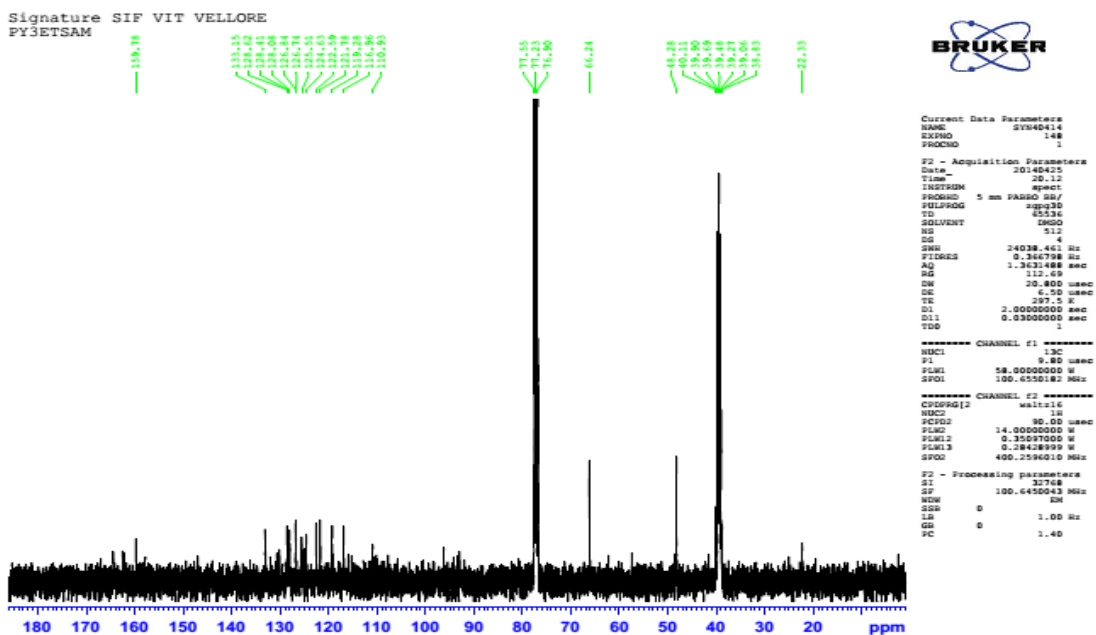
¹³C-NMR spectrum of 4o



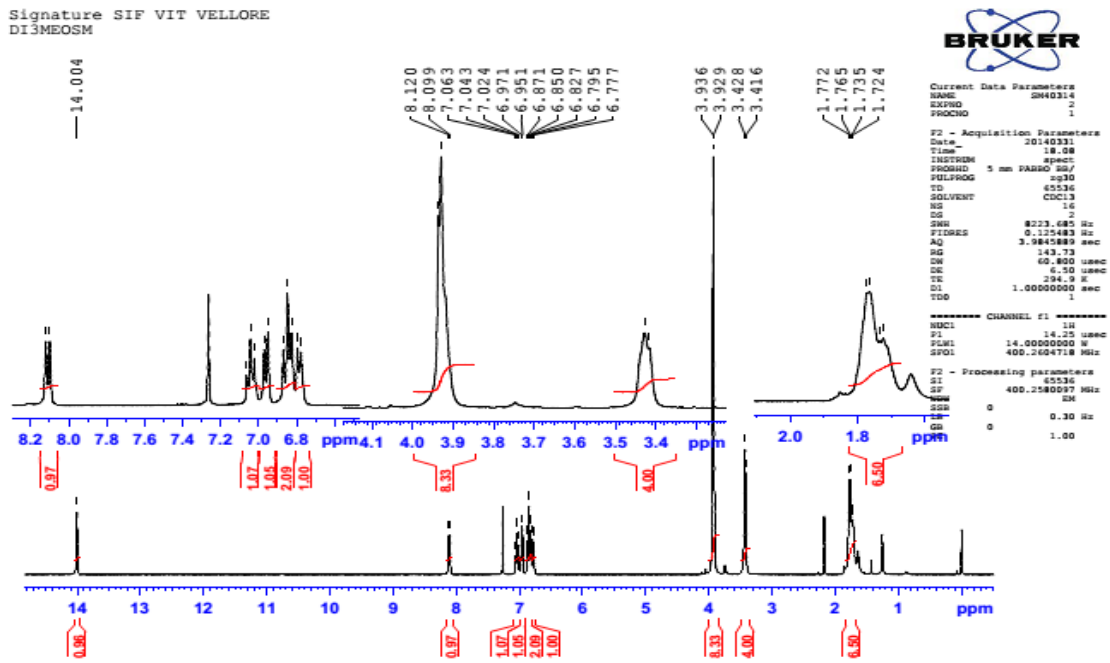
¹H-NMR spectrum of 4p



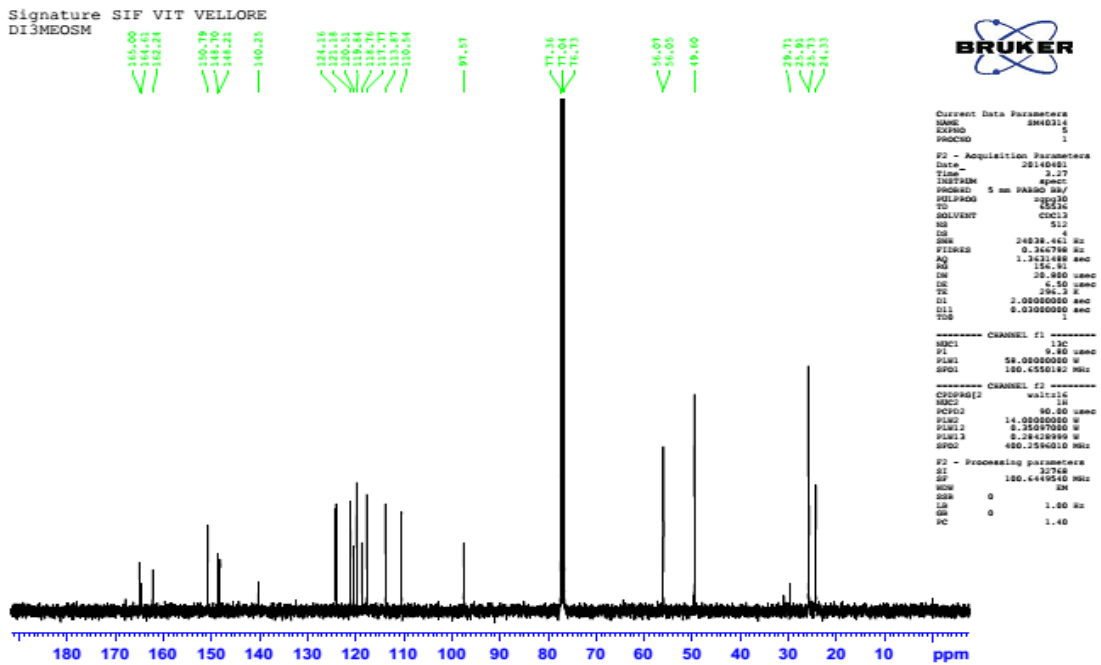
¹³C-NMR spectrum of 4p



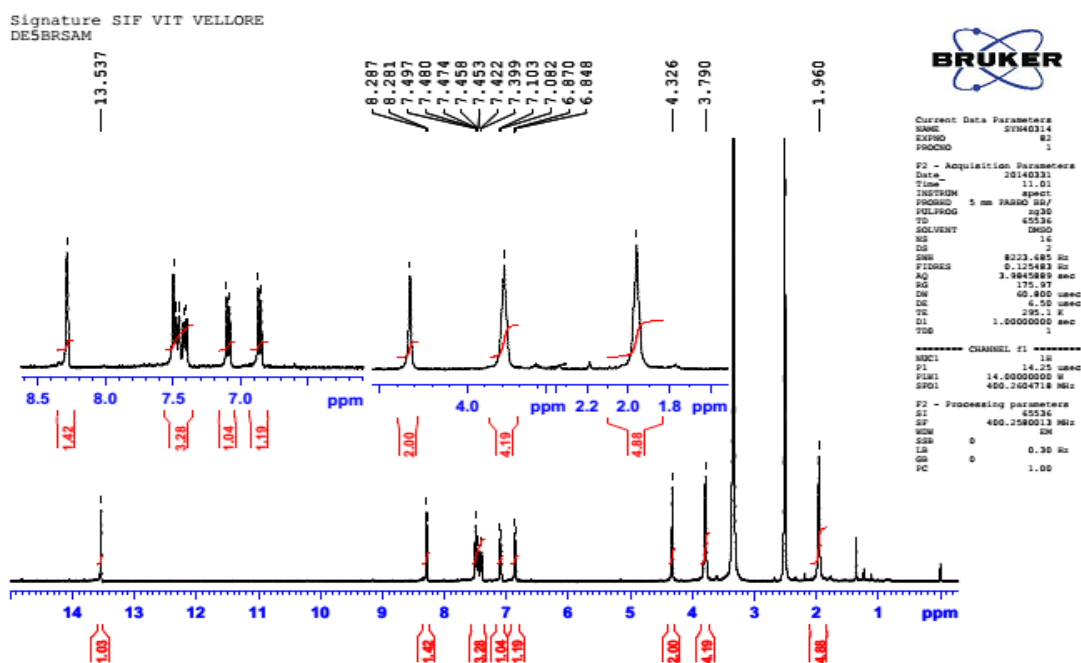
¹H-NMR spectrum of 4q



¹³C-NMR spectrum of 4q



¹H-NMR spectrum of 4r



¹³C-NMR spectrum of 4r

