

Electronic Supporting Information

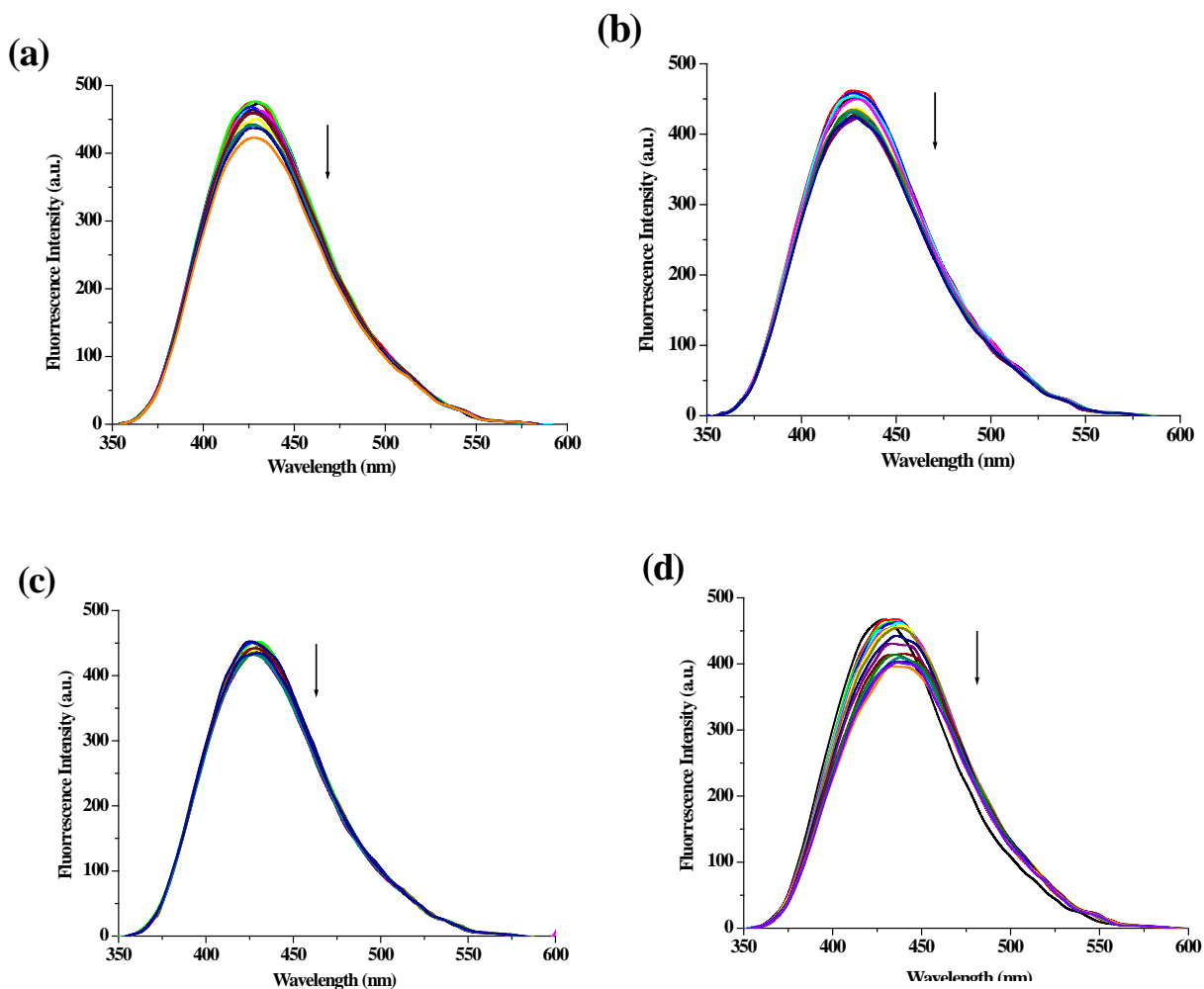
Coumarin-based supramolecular gelator: A case of selective detection of F^- and $HP_2O_7^{3-}$

Kumares Ghosh* and Santanu Panja

Department of Chemistry, University of Kalyani, Kalyani-741235, India.

Email: ghosh_k2003@yahoo.co.in

Change in emission of 1 in CH_3CN containing 0.5% DMSO.



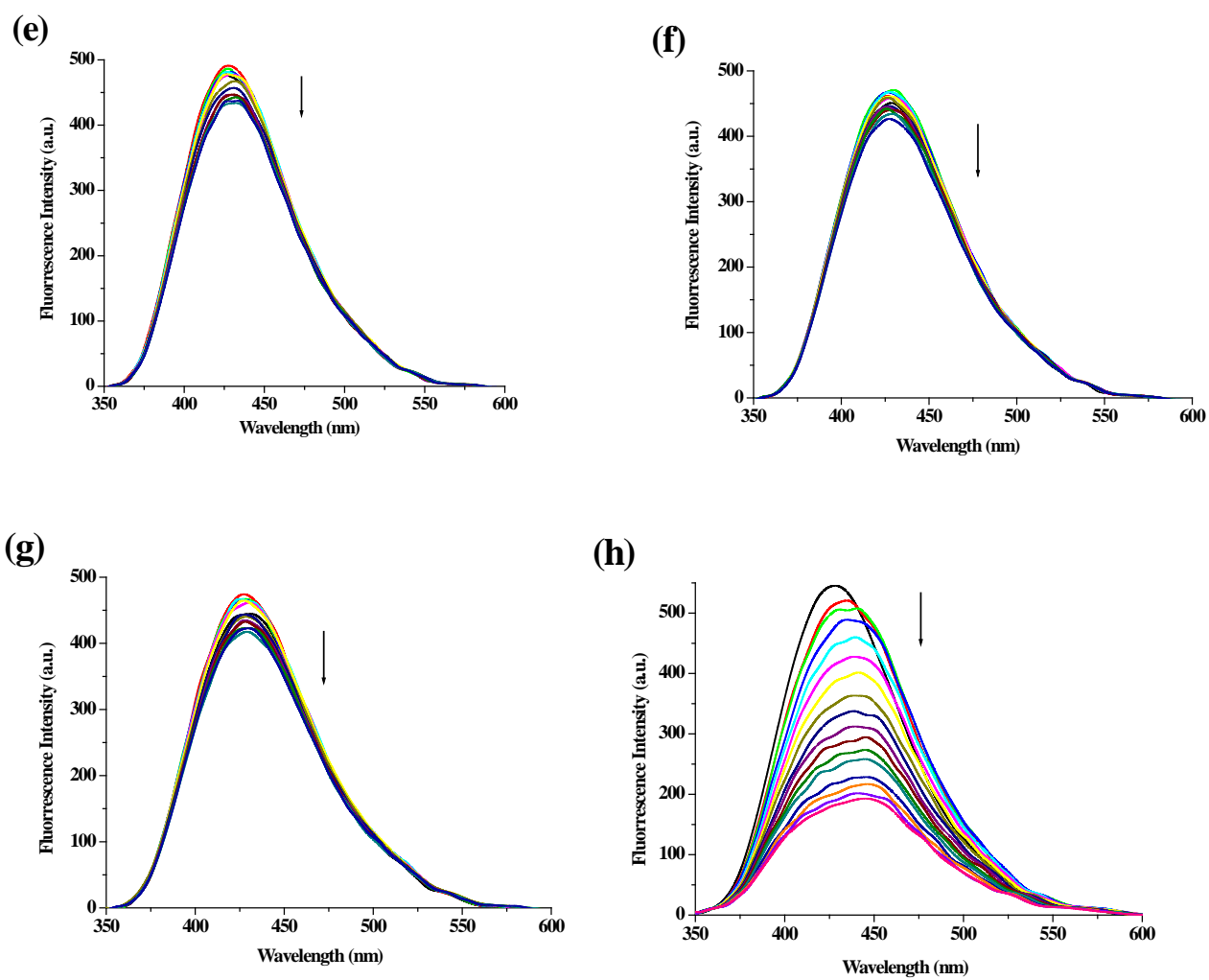
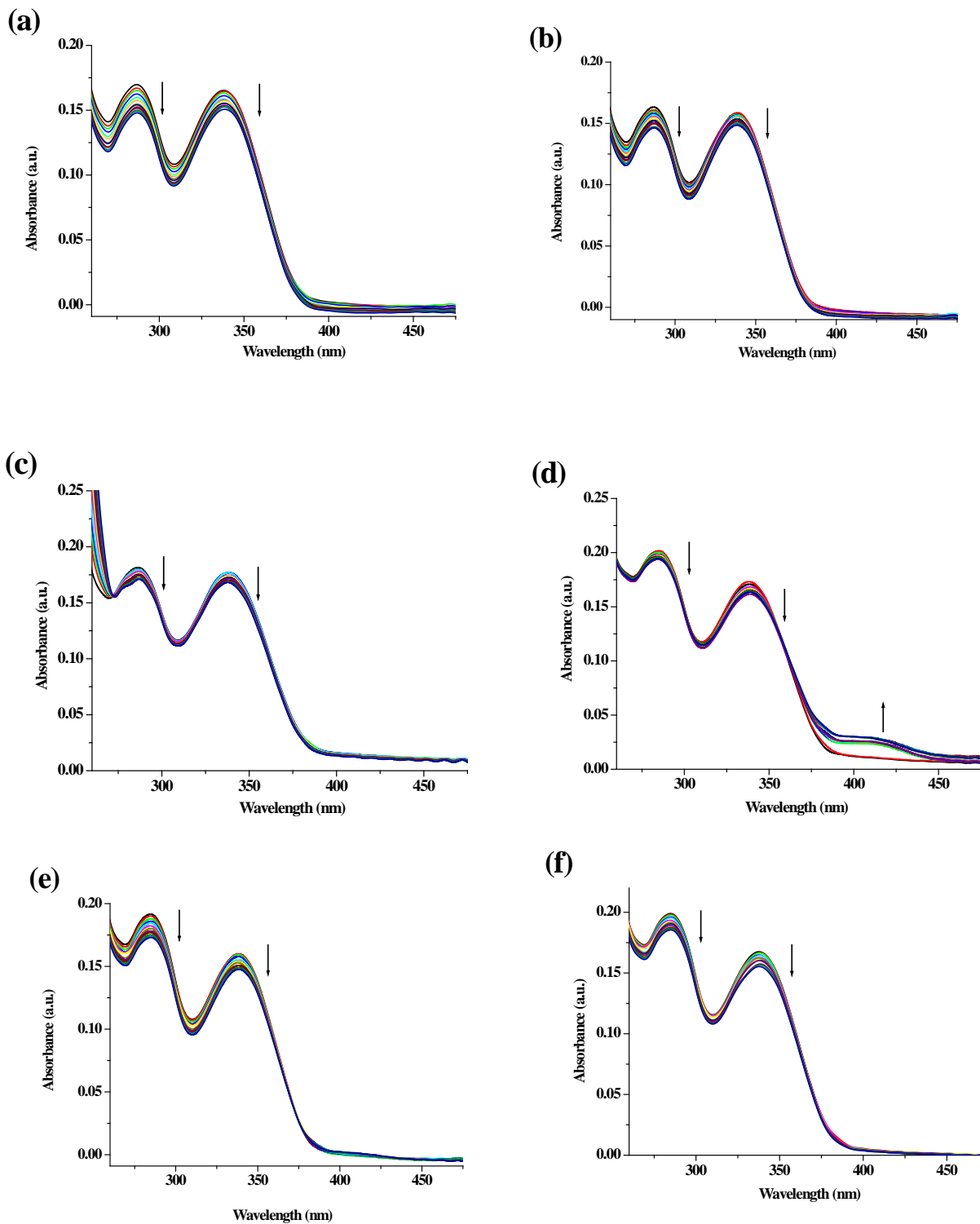


Fig. 1S. Change in emission of **1** ($c = 1.94 \times 10^{-5} \text{ M}$) upon addition of 10 equiv. of (a) Cl^- , (b) Br^- , (c) I^- , (d) AcO^- , (e) H_2PO_4^- , (f) NO_3^- , (g) HSO_4^- , (h) OH^- in CH_3CN containing 0.5% DMSO.

Change in absorbance of 1 in CH₃CN containing 0.5% DMSO.



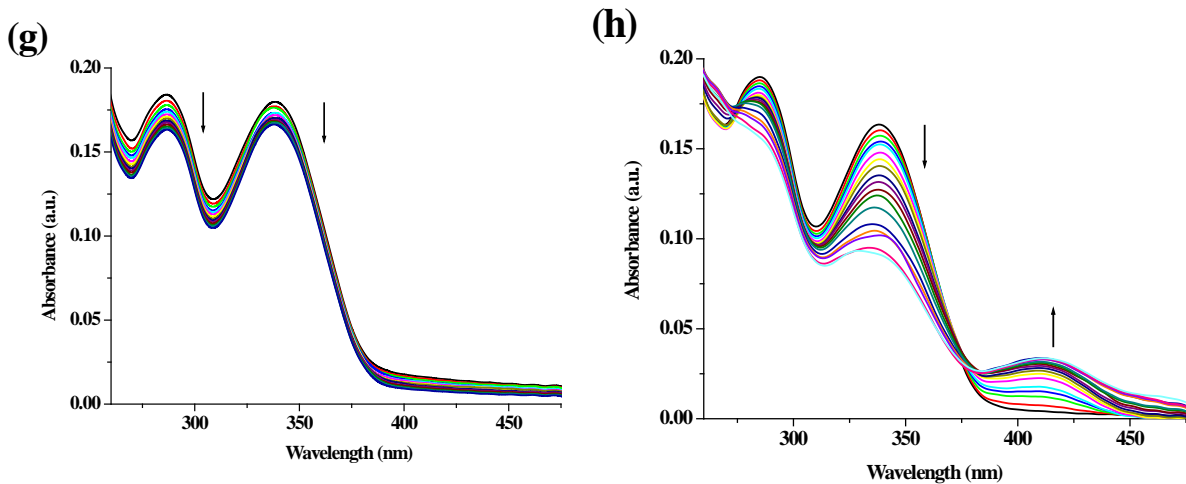


Fig. 2S. Change in absorbance of **1** ($c = 1.94 \times 10^{-5} \text{ M}$) upon addition of 10 equiv. of (a) Cl^- , (b) Br^- , (c) I^- , (d) AcO^- , (e) H_2PO_4^- , (f) NO_3^- , (g) HSO_4^- , (h) OH^- in CH_3CN containing 0.5% DMSO.

UV-VIS Job plot with $\text{HP}_2\text{O}_7^{3-}$ and F^- .

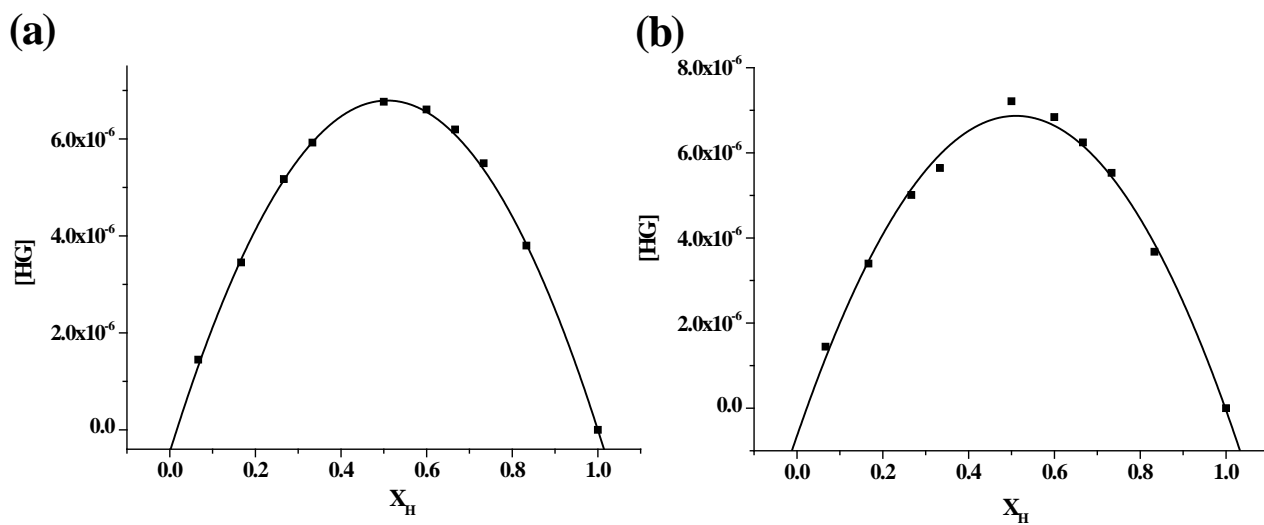


Fig. 3S. Job plots of **1** ($c = 1.94 \times 10^{-5} \text{ M}$) with (a) $\text{HP}_2\text{O}_7^{3-}$, (b) F^- .

Binding constant plots.

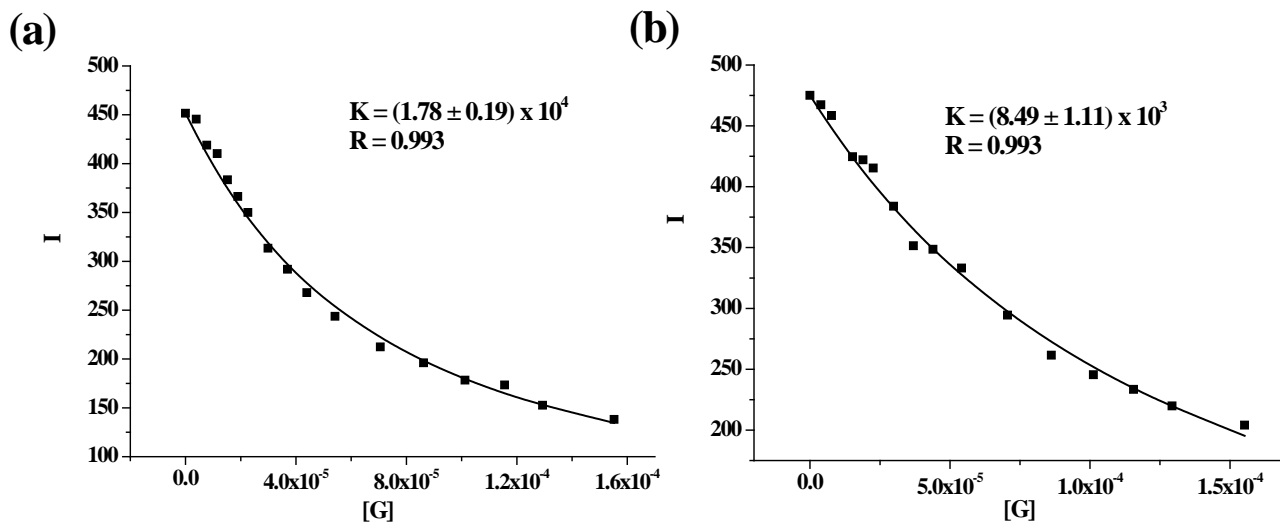


Fig. 4S. Non linear binding constant curve for **1** ($c = 1.94 \times 10^{-5}$ M) with (a) $\text{HP}_2\text{O}_7^{3-}$, (b) F^- in CH_3CN containing 0.5% DMSO.

Detection limit

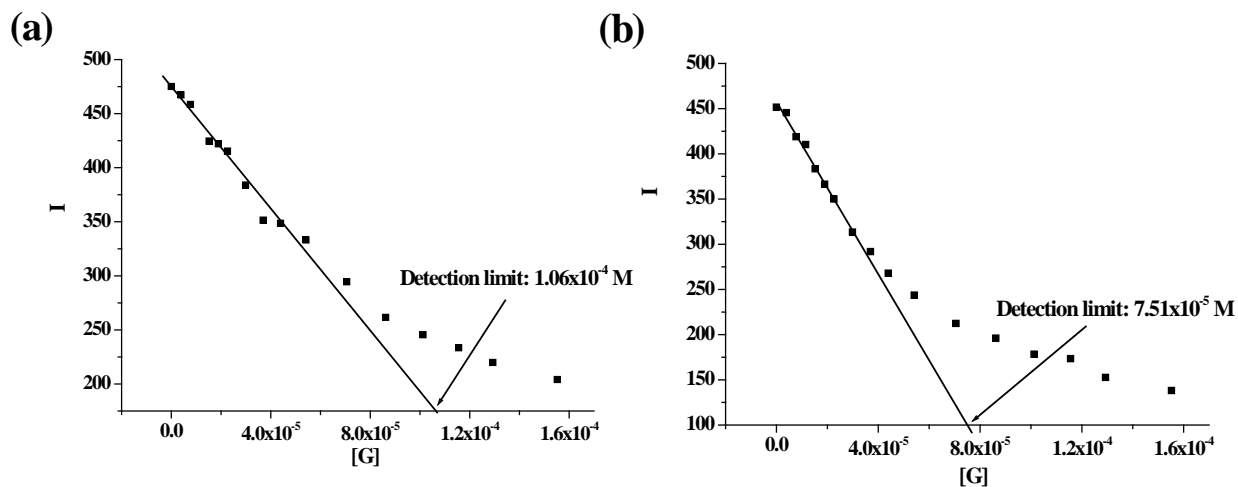


Fig. 5S. Detection limits of (a) F^- and (b) $\text{HP}_2\text{O}_7^{3-}$ with **1** ($c = 1.94 \times 10^{-5}$ M) in CH_3CN containing 0.5% DMSO.

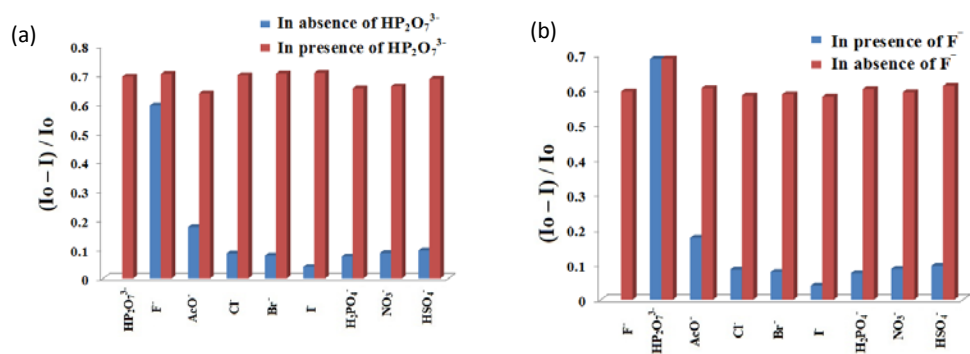
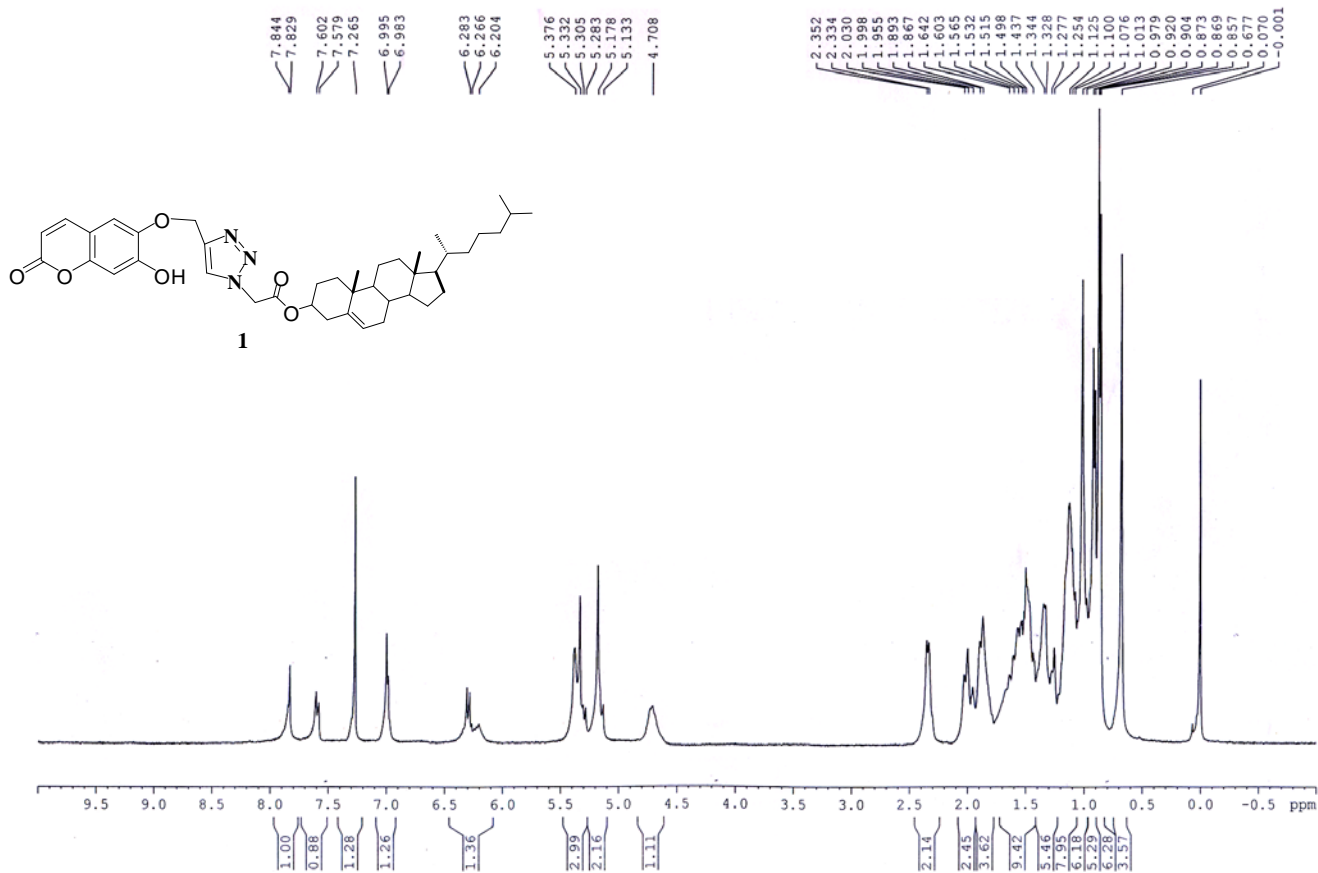
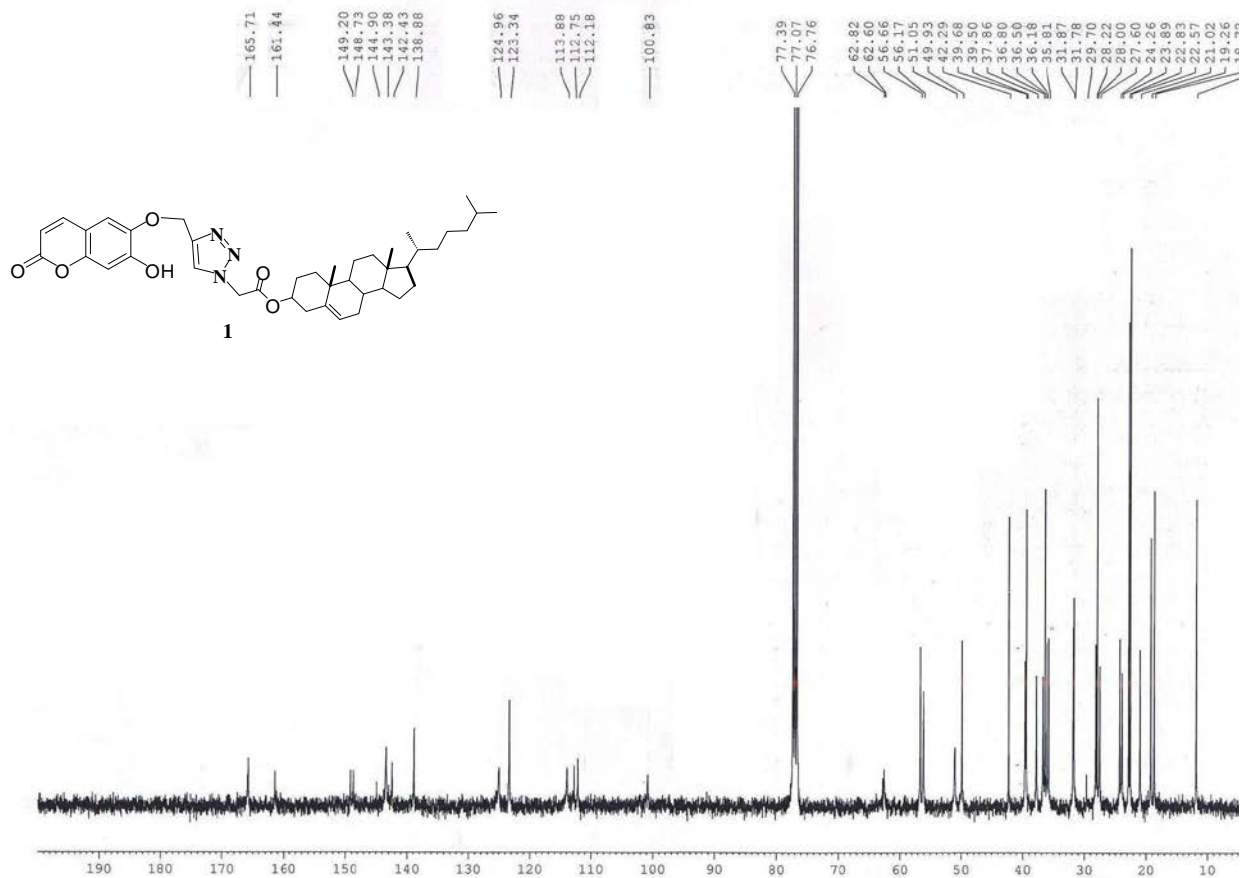


Fig 6S. Fluorescence response of **1** ($c = 1.94 \times 10^{-5} \text{ M}$) upon addition of 10 equiv. amounts of (a) $\text{HP}_2\text{O}_7^{3-}$ and (b) F^- ($c = 7.76 \times 10^{-4} \text{ M}$) to the solution of **1** containing other anions in 10 equiv. amounts in CH_3CN containing 0.5% DMSO respectively.

¹H NMR (CDCl₃, 400 MHz)



^{13}C NMR (CDCl_3 , 100 MHz)



Mass spectrum of 1.

