

Electronic Supplementary Information (ESI)

The SEM image of bare $\text{Ni}(\text{OH})_2$ microstructure and the amperometric response of the electrodes modified with bare $\text{Ni}(\text{OH})_2$ and $\text{CeO}_2\text{-Ni}(\text{OH})_2$ composites with different CeO_2 contents.

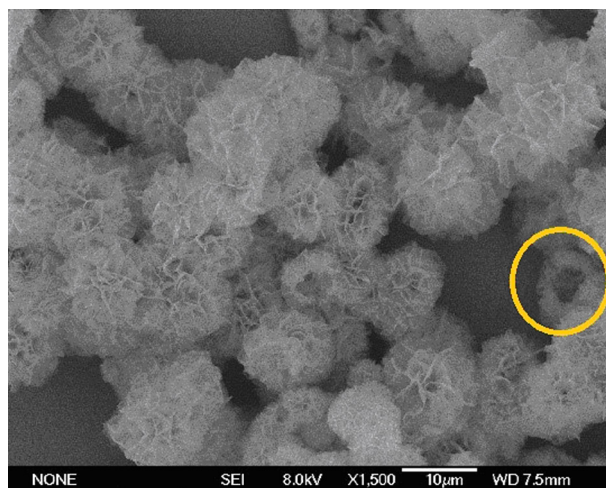


Fig. S1. SEM image of the bare $\text{Ni}(\text{OH})_2$ sample prepared in the same condition.

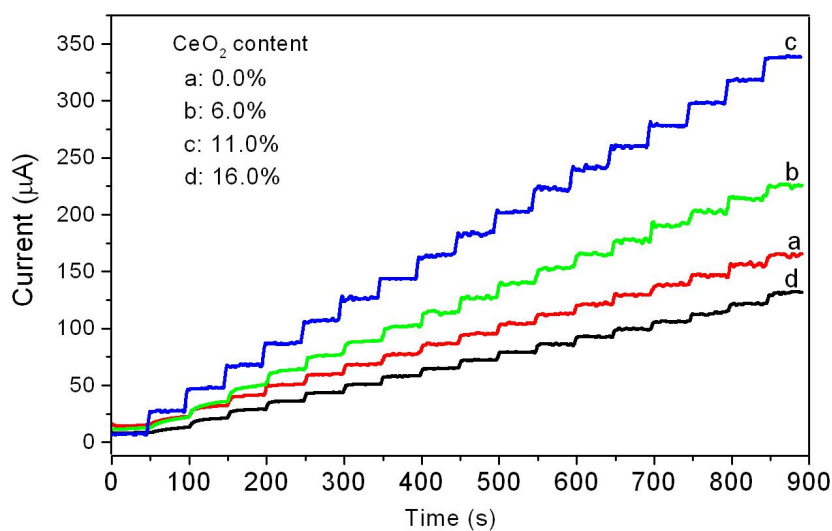


Fig. S2. Amperometric response of the electrodes modified with (a) bare $\text{Ni}(\text{OH})_2$ and (b-d) $\text{CeO}_2\text{-Ni}(\text{OH})_2$ composites with different CeO_2 contents.