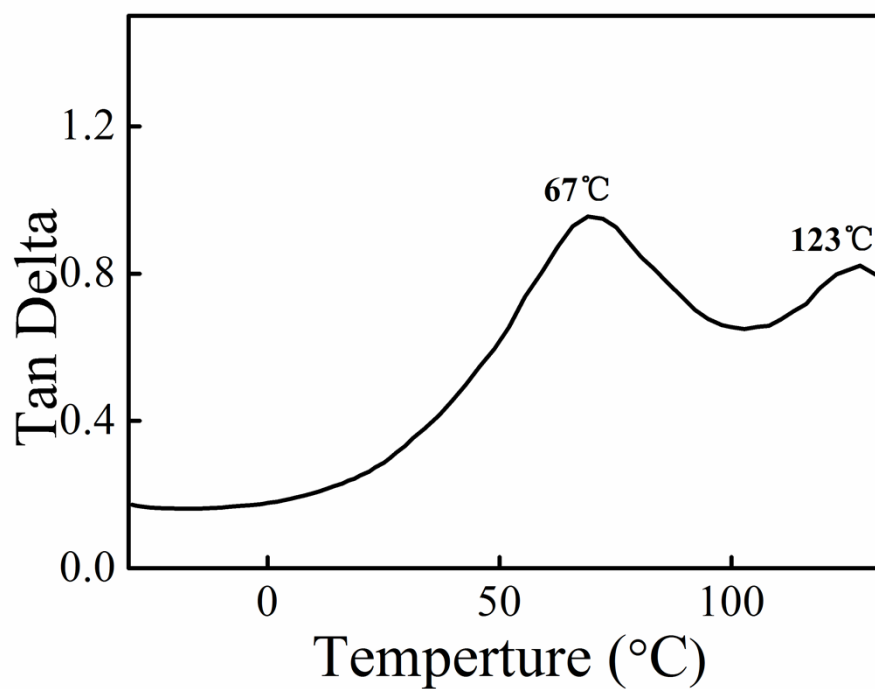


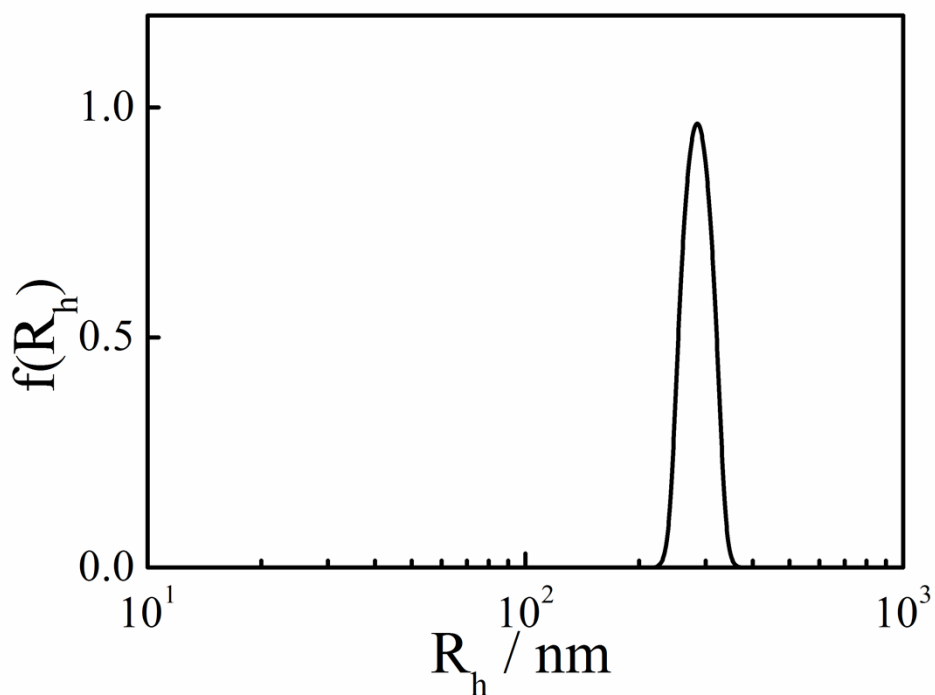
## One-pot Synthesis of Poly(*l*-lactide)-*b*-Poly(methyl methacrylate)

### Block Copolymer

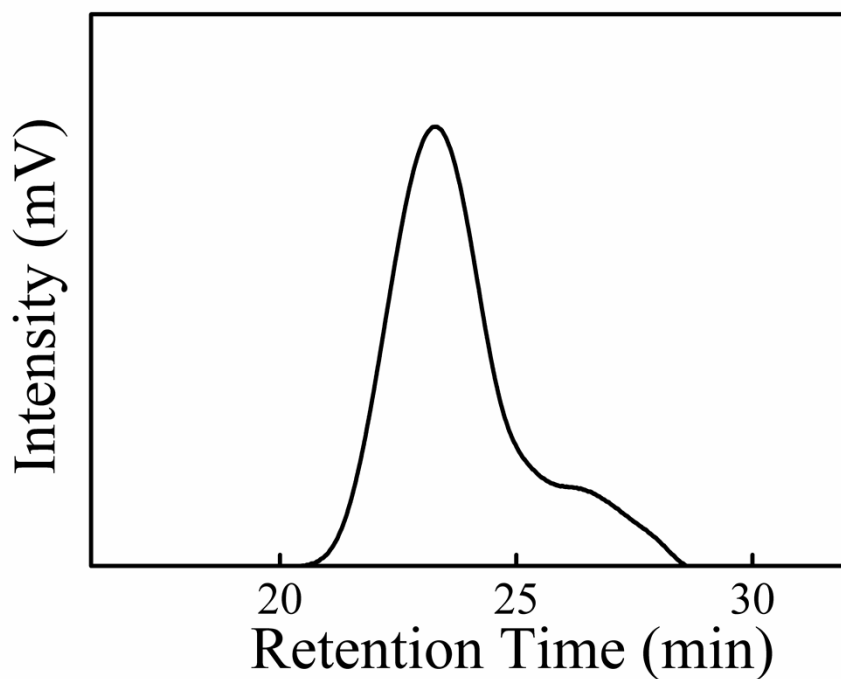
Junzhe Song, Jinbao Xu, Stergios Pispas, Guangzhao Zhang



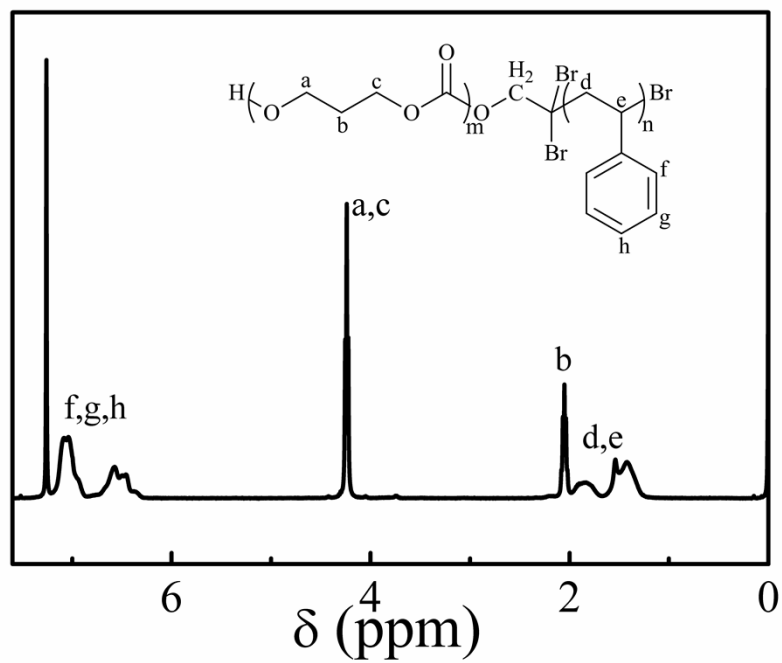
**Fig. S1.** DMA curve of PLA-*b*-PMMA copolymer.



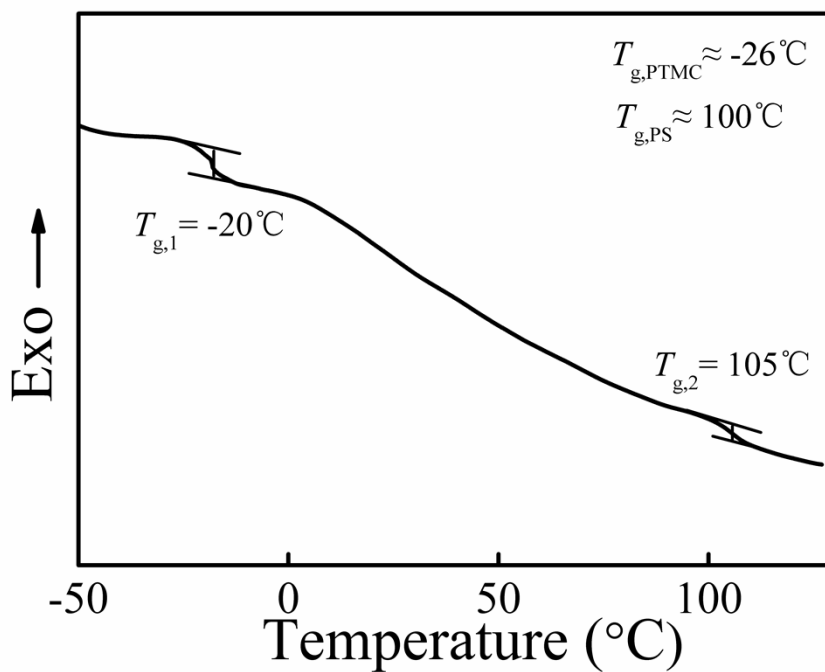
**Fig. S2.** Hydrodynamic radius distribution of the PLA-*b*-PMMA micelles in ethanol/water (80/20 wt %) solvent mixture at 25 °C.



**Fig. S3.** SEC curves of PTMC-*b*-PS.



**Fig. S4.** <sup>1</sup>H NMR spectrum (in CDCl<sub>3</sub>) of PTMC-*b*-PS.



**Fig. S5.** DSC curve of PTMC-*b*-PS.