

Supporting Information

Reversible swelling transitions in stimuli-responsive layer-by-layer films containing block copolymer micelles

Julia Gensel,^a Inna Dewald,^a Johann Erath,^a Eva Betthausen,^b Axel. H. E. Müller^b and Andreas Fery*^a

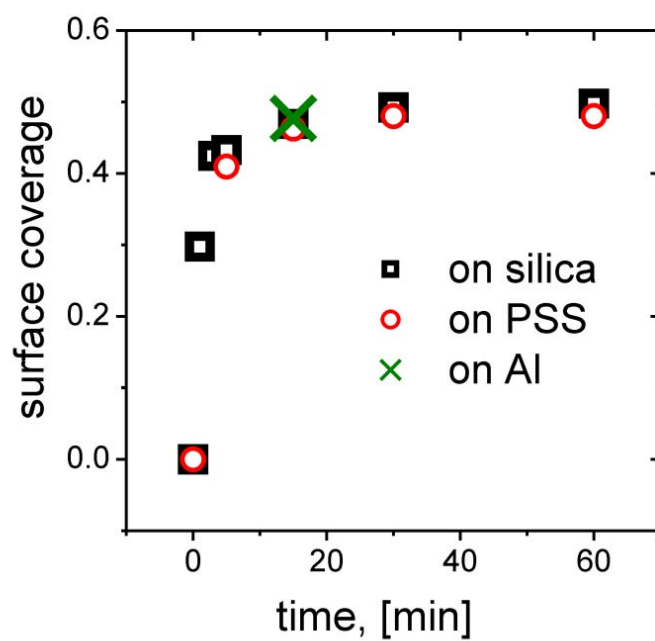


Figure S1: Adsorption kinetics of BMAADq micelles onto different substrates studied by AFM

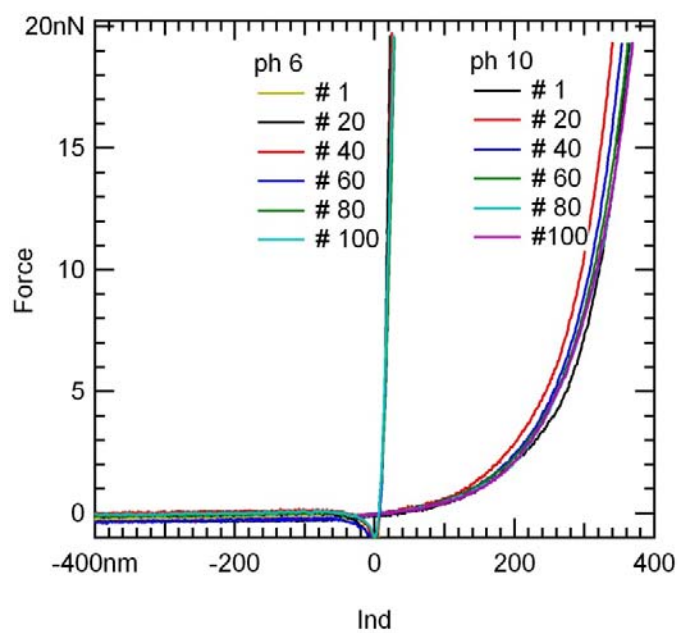


Figure S2: Force-indentation measurements on the same spot of the sample show that the film is not plastically deformed. Legend indicates the number of measurements.

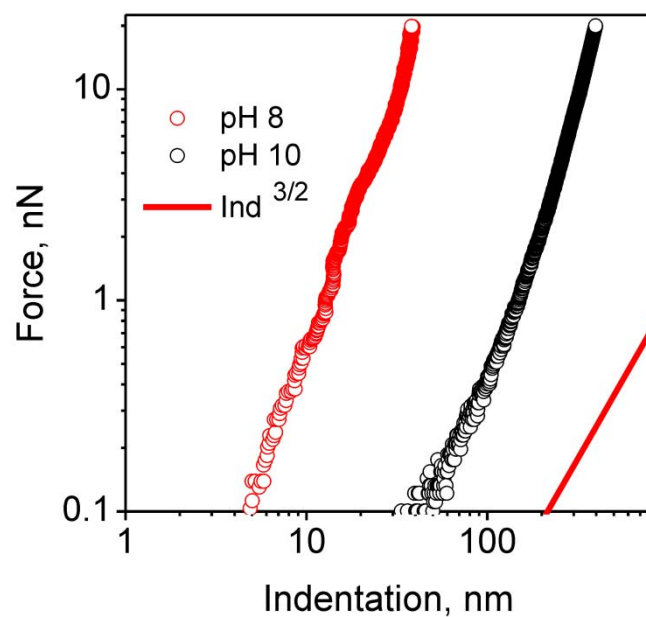


Figure S3: log-log plot of the force–indentation data for different swelling states of a (BMAADq/PSS)₃ film. The force is proportional to the 3/2 power of the indentation confirming the validity of the Hertzian model. For comparison, a line corresponding to the 3/2 power law relationship is plotted (solid line).

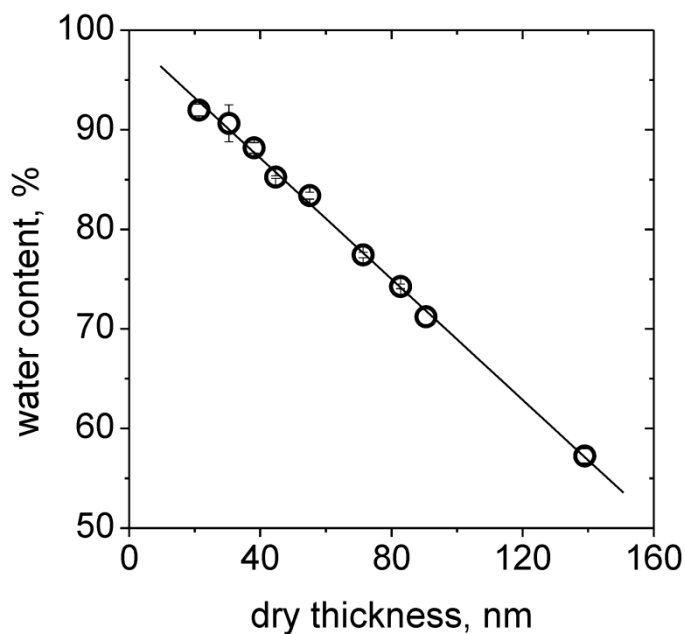


Figure S4: Water content vs. the dry thickness of (BMAADq/PSS)_x films.