

Electrochemiluminescence on Bipolar Electrodes for Visual Bioanalysis

Mei-Sheng Wu, Da-Jing Yuan, Jing-Juan Xu, Hong-Yuan Chen*

State key Laboratory of Analytical Chemistry for Life Science, School of Chemistry and Chemical Engineering, Nanjing University, Nanjing 210093, China; E-mail address: xujj@nju.edu.cn (J.J. Xu)

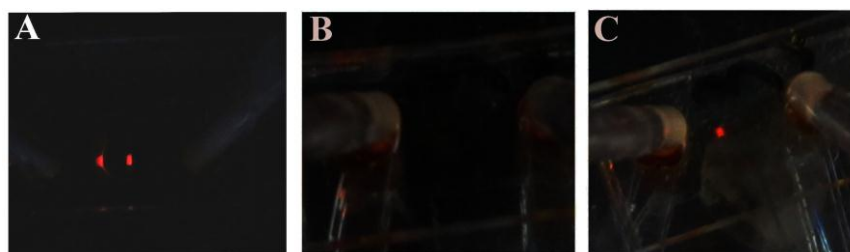


Fig. S1 Photographs of the wireless ECL device before (A, B) and after (C) sensing 14.0 $\mu\text{g/mL}$ PSA. (A) 12.0 V, (B) 7.0 V, (C) 7.0 V.

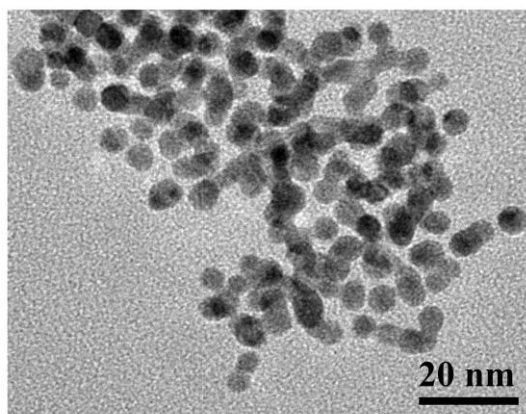


Fig. S2 SEM image of Au NPs.

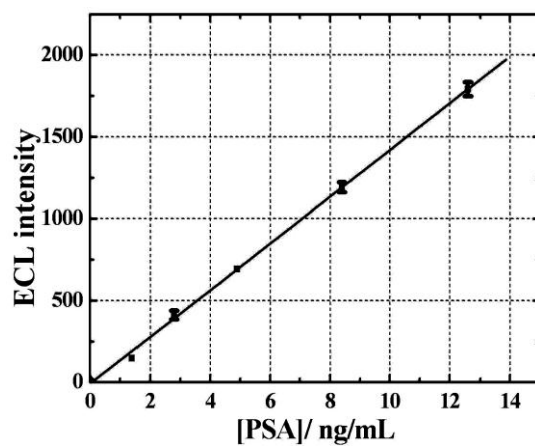


Fig. S3 Determination of PSA concentration in human serum blood using standard addition method. (PSA concentrations x , $x+1.4$, $x+2.8$, $x+4.9$, $x+8.4$, and $x+12.6$ ng/mL).