

Supplementary Material (ESI) for Soft Matter  
This journal is © The Royal Society of Chemistry 2007

## Supplementary Information

for

### Direct Observation of the $\beta$ -Sheet Crystalline Regions in *Bombyx mori* Silk Fibers

Lawrence F. Drummy, B. L. Farmer, Rajesh R. Naik

Materials and Manufacturing Directorate  
Air Force Research Laboratory  
Wright-Patterson AFB, OH 45433

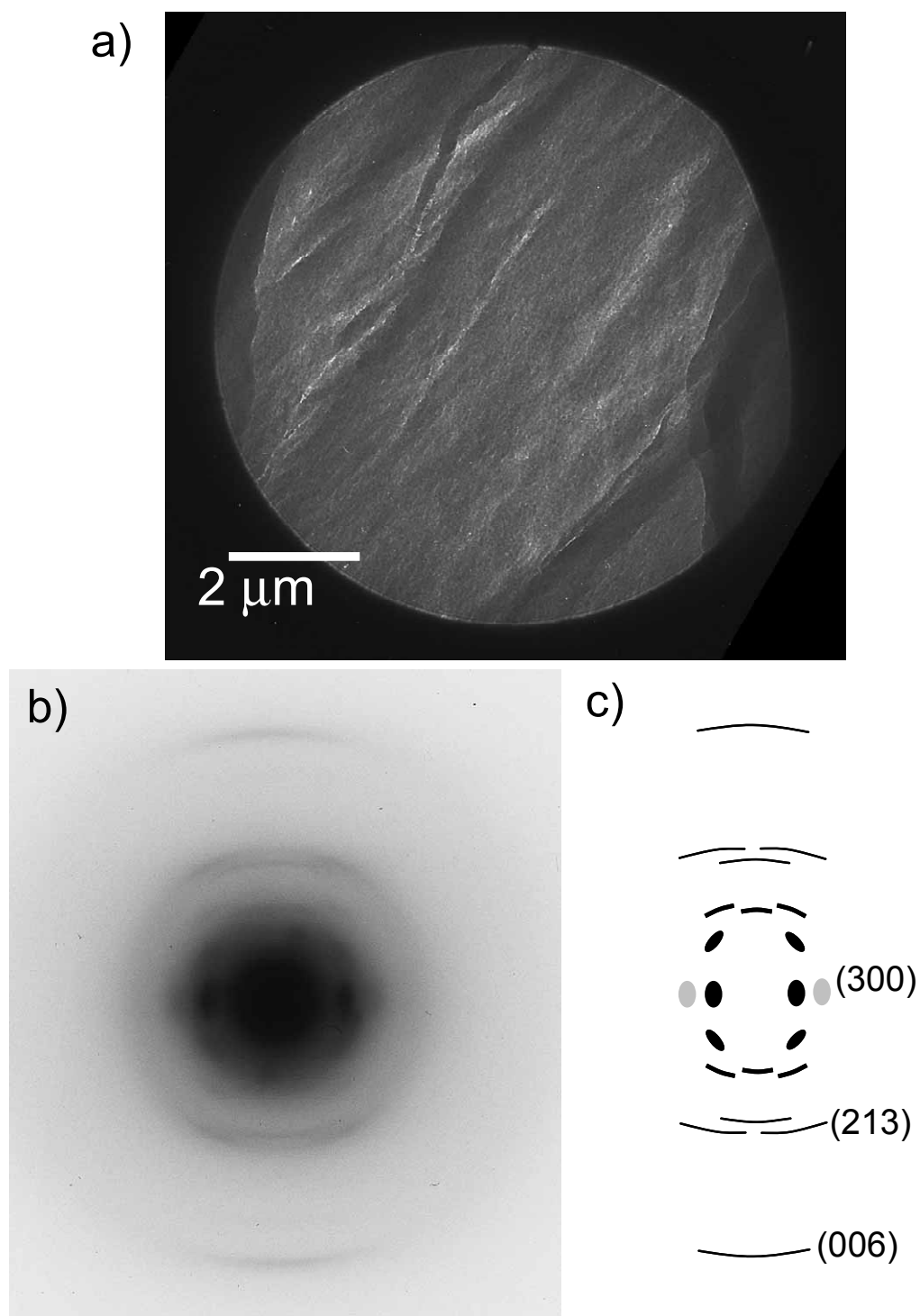


Figure S1. a) Defocused (000) diffraction pattern taken from a longitudinal thin section of a *B. mori* fiber. The fiber axis is running nominally vertical. b) Low dose electron diffraction pattern taken from the region shown in (a). c) Schematic outlining some of the peaks visible in (b).

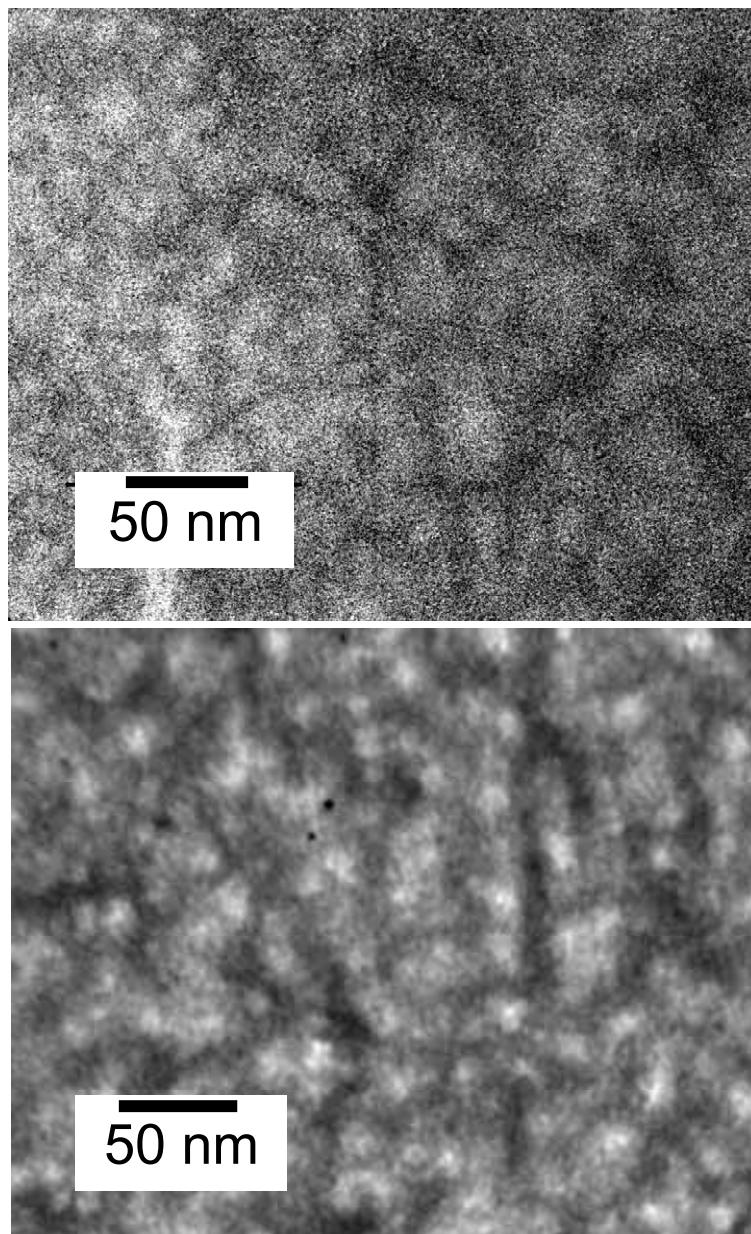


Figure S2. (Above) Low dose bright field TEM image taken at 200 kV of a silk thin film. The contrast, although weak in this high voltage image, shows the b-sheet structure. (Below) Bright field LVTEM image taken at 5 kV of a similar thin film, showing much higher contrast from the b-sheet crystals.