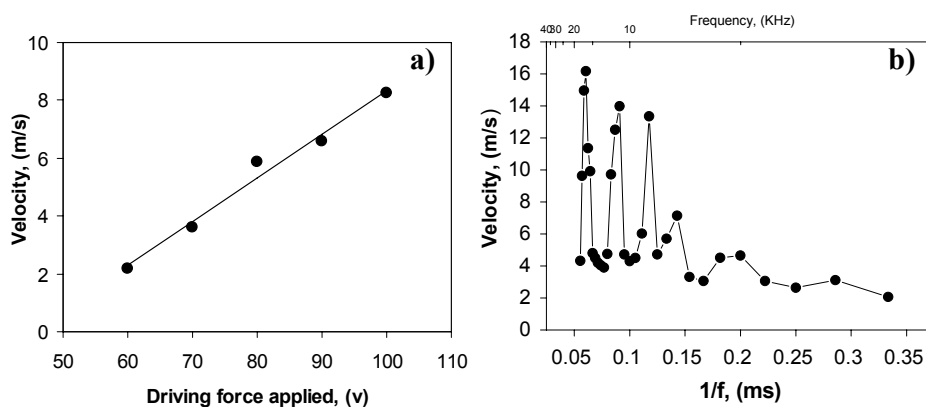
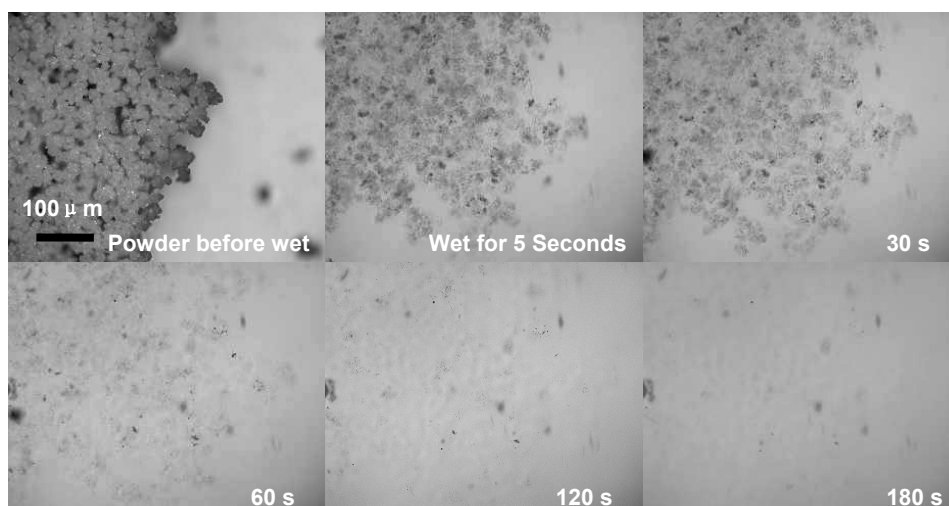


Supplement 1



Influence of printing parameters on printed drop velocity: a) effect of voltage applied to the piezoelectric actuator at 2000 Hz, and b) effect of printing frequency at 60 V.

Supplement 2



Optical microscope images, taken after various time intervals, tracking the dissolution of a single liquid drop into a powder bed containing particles of 25 μm mean diameter.