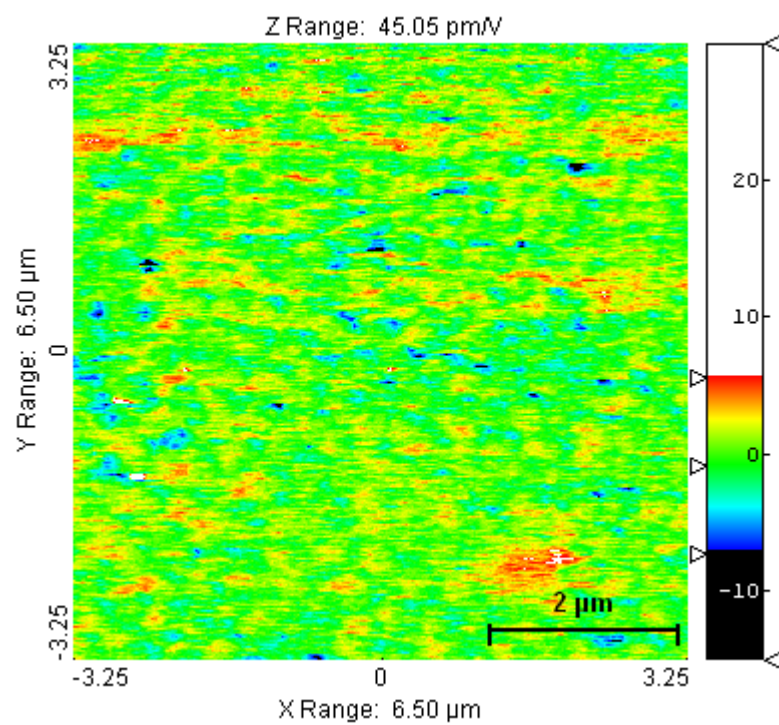


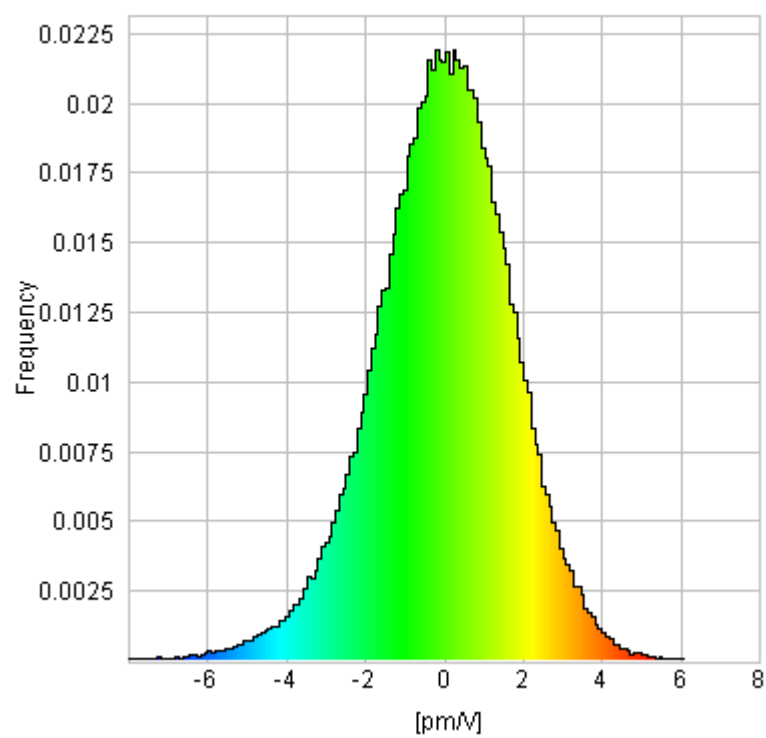
### **Piezoresponse images of ferroelectric PVDF films with dome shaped domains**

On the next two pages, one can find the piezoresponse images of the films from Figure 2a and Figure 3a in the paper respectively. These data only provide differences of the piezoelectric response within the image. Absolute piezoelectric coefficients cannot be obtained with this method. The results are discussed in the paper.

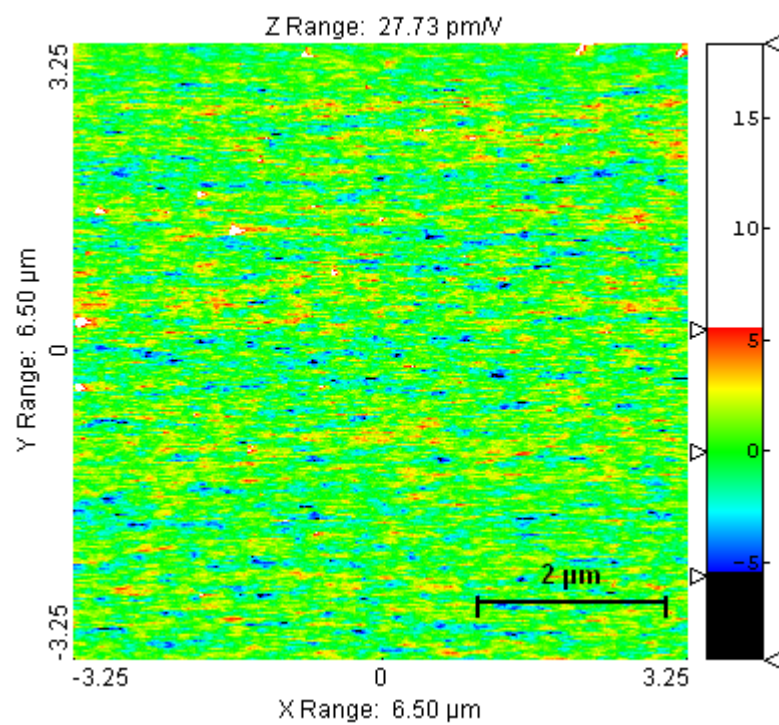
In both cases, it can be observed that the piezoresponse data do not correspond with the size of the dome shaped domains in the AFM images (see paper). Most of the piezoresponse peaks are smaller than the domes.



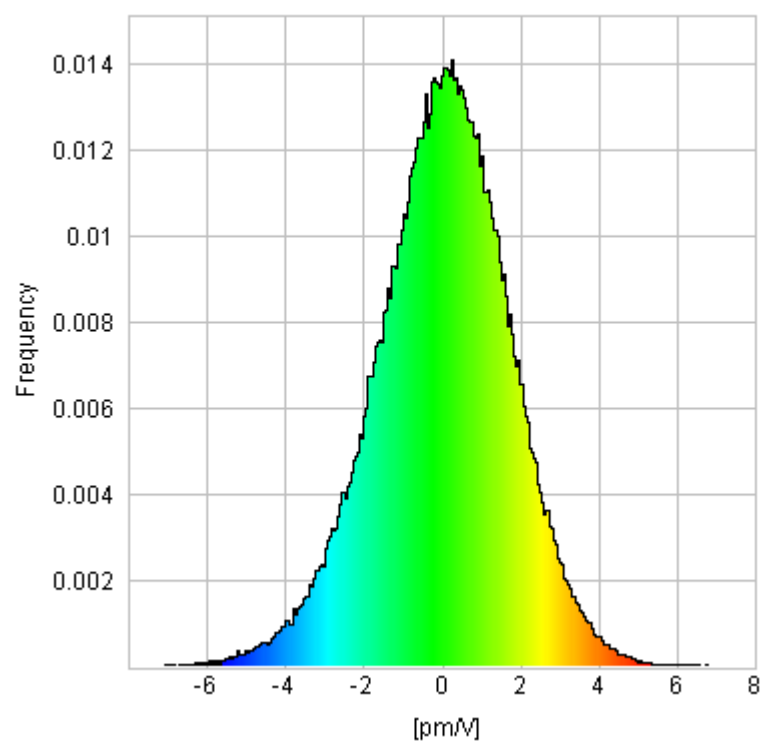
Piezoresponse image of the center of Figure 2a.



Histogram of piezoresponse image 2a.



Piezoresponse image of Figure 3a



Histogram of piezoresponse image 3a.