

Supporting Information for

Effects of Bilayer Phases on Phospholipid-
Poloxamer Interactions

Guohui Wu,[†] Htet A. Khant,[‡] Wah Chiu,[‡] and Ka Yee C. Lee^{,†}*

*To whom correspondence should be addressed. E-mail: kayeelee@uchicago.edu

SUPPORTING FIGURES AND LEGENDS

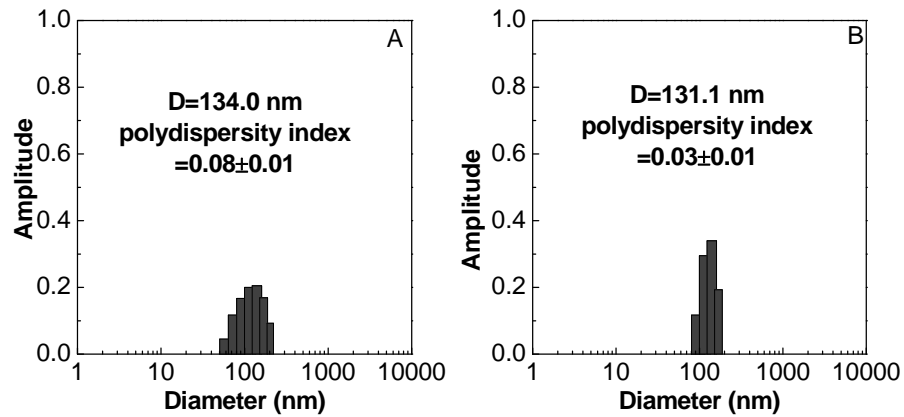


FIGURE S1. Particle size distribution determined from DLS for liposomes stored above 24 °C of (A) DMPC; (B) DMPC/poloxamer (poloxamer content 7.3 mg/ml).

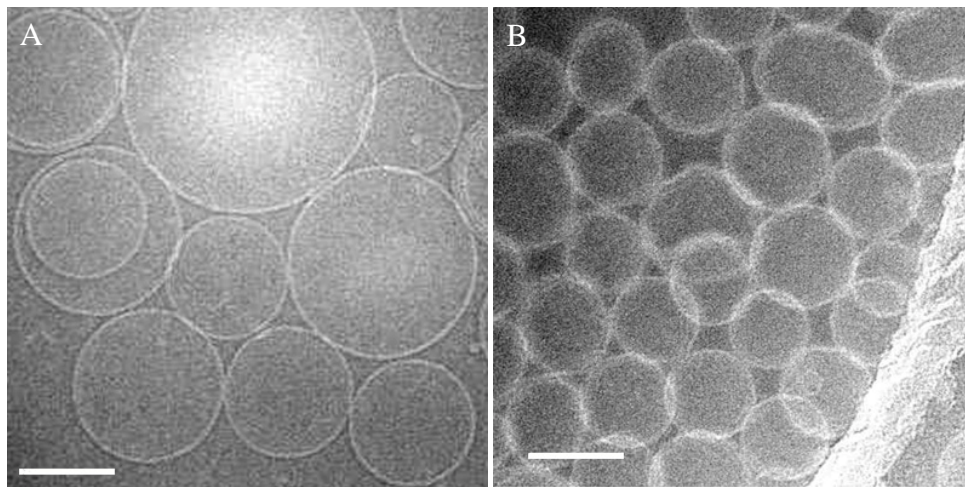


FIGURE S2. Cryo-EM micrographs of (A) POPC (10 mg/ml) and (B) POPC/P338 (10/10 mg/ml) liposomes. The vesicles are more monodisperse with the presence of P338. Scale bar = 100 nm.