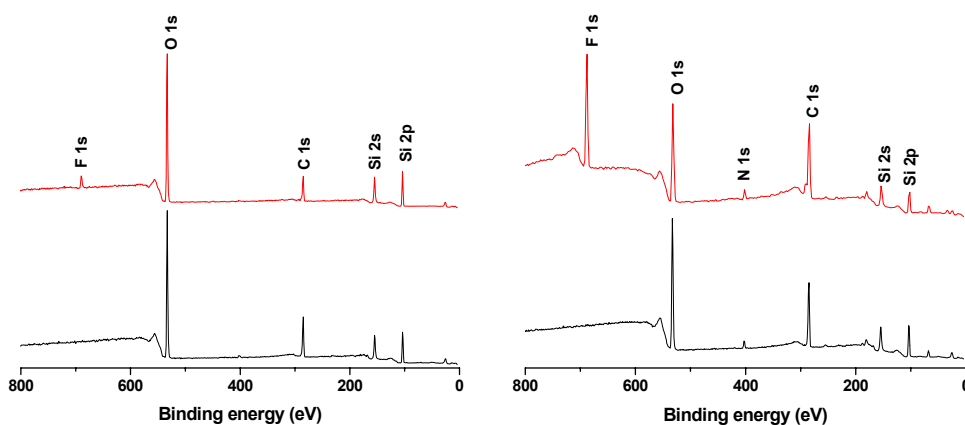
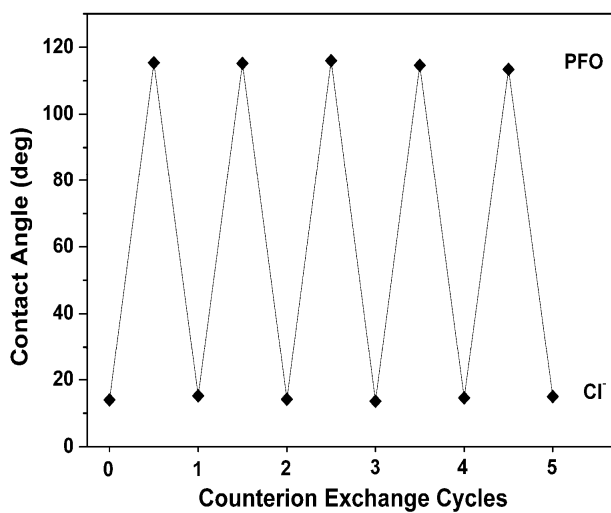


## Electronic Supplementary Information



XPS survey spectra of PE-0 (left) and PE-1 (right), each bearing Cl<sup>-</sup> (black, lower) and PFO (red, upper) counter anion, respectively. No Na peak (for example, the Na KL1 at ~497 eV) is observed in any of the above spectra.



Contact angle as a function of counterion over consecutive exchange cycles for a PEM assembled in the presence of NaCl of 5.0 M.