

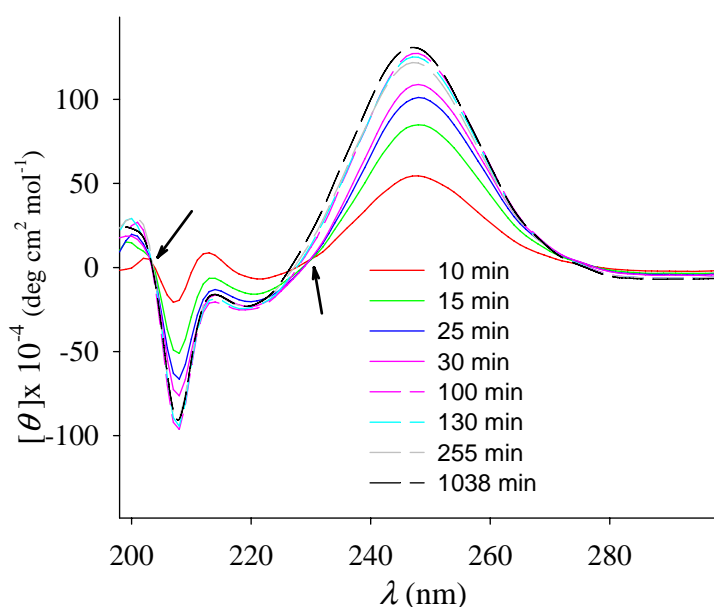
Kinetics of Formation of Supramolecular Tubules of a Sodium Cholate Derivative

Luciano Galantini,^{*a} Claudia Leggio,^a Aida Jover,^b Francisco Meijide,^b Nicolae Viorel Pavel,^a Victor Hugo Soto Tellini,^c José Vázquez Tato,^b Roberto Di Leonardo^a and Giancarlo Ruocco^a

^a Dipartimento di Chimica, Dipartimento di Fisica and Research center SOFT-INFM-CNR, Sapienza Università di Roma, P.le A. Moro 5, 00185 Roma, (Italy) Fax: (+39) 06 490631
E-mail: l.galantini@caspur.it

^b Departamento de Química Física, Facultad de Ciencias, Universidad de Santiago de Compostela, Avda. Alfonso X El Sabio s/n, 27002 Lugo, (Spain)

^c Prof. V. H. Soto Tellini, Escuela de Química, Universidad de Costa Rica, San José, (Costa Rica)



Evolution of the CD spectra at 40 °C, during the tubule formation process, for a 1.2 mM Na-butPhC sample in buffer 30 mM. The arrows show the short time isodichroic points.