

Self-Assembled Peptide Nanorods as Building Blocks of Fractal Patterns

Weiping Wang and Ying Chau*

Supporting data

SEM images:

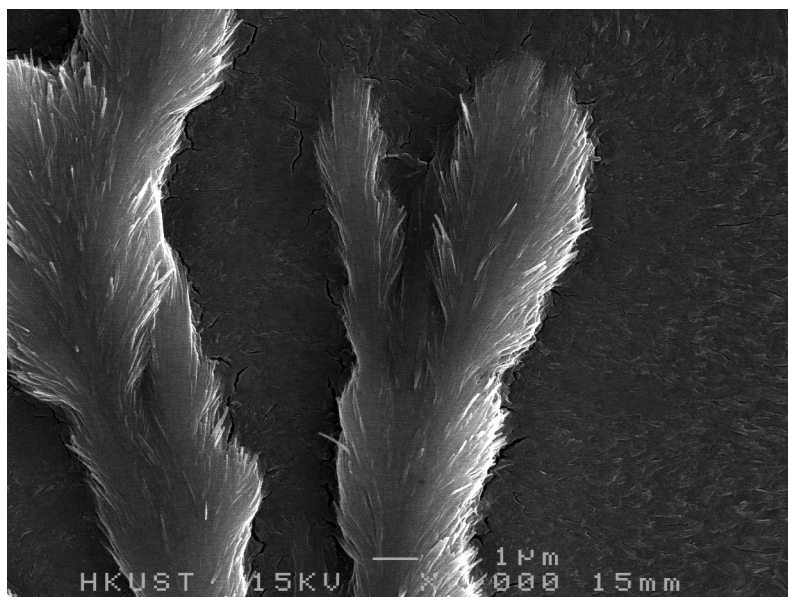


Fig. S1. SEM image of one branch of a fractal from 10 mg mL⁻¹ FPTP pre-incubated solution on a silicon wafer.

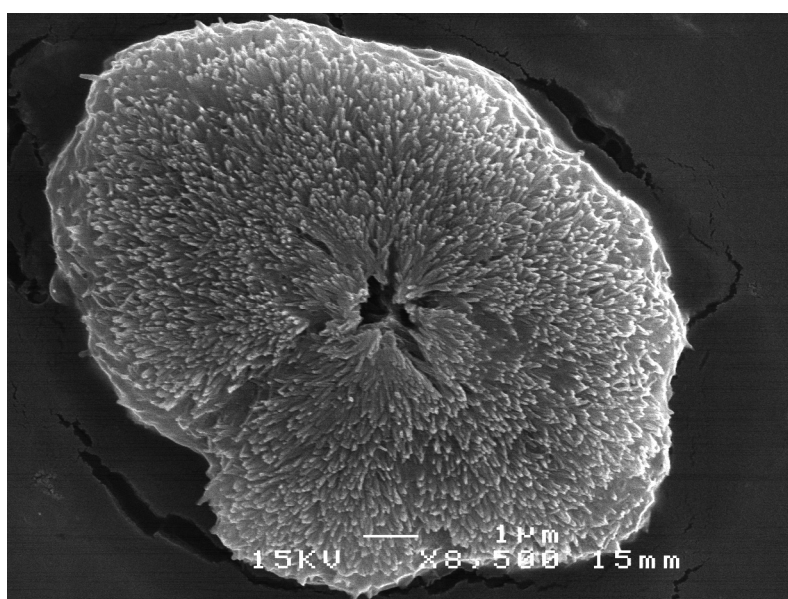


Fig. S2. SEM image of a drying sample from 1 mg mL⁻¹ FPT solution on a silicon wafer.