

Side Chain Assisted Nanotubular Self-Assembly of Cyclic Peptides at the Air-Water Interface

Byeongdo Kwak,^a Kwanwoo Shin,^{a,*} Sangjun Seok,^b Doseok Kim,^b Farhan Ahmad,^c Kurt E. Geckeler,^c Oliver H. Seeck,^d Young-Soo Seo,^e Suahil K. Satija,^f and Stefan Kubik^g

^a Department of Chemistry, Institute of Biological Interfaces, Sogang University Shin-soo, Mapo, Seoul 121-74, Korea. Tel: +82-2-705-8441; Fax: +82-2-701-0967; Email: kwshin@sogang.ac.kr.

^b Department of Physics, Sogang University Shin-soo, Mapo, Seoul 121-74, Korea

^c Department of Materials Science and Engineering, Gwangju Institute of Science and Technology, 1 Oryong-dong Buk-gu Gwangju 500-712, Korea

^d Hasylab am Desy, Notkestrasse 85, D-22603 Hamburg, Germany

^e Department of Nano Science and Engineering, Sejong University, Seoul, Korea

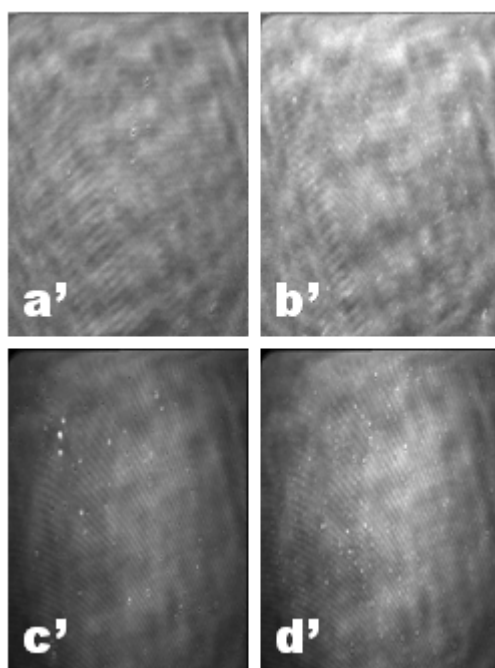
^f NIST Center for Neutron Research, National Institute of Standards and Technology, 100 Bureau Dr. Gaithersburg, MD 20899, USA

^g Fachbereich Chemie - Organische Chemie, Technische Universität Kaiserslautern, Erwin-Schrödinger-Straße, D-67663 Kaiserslautern, Germany.

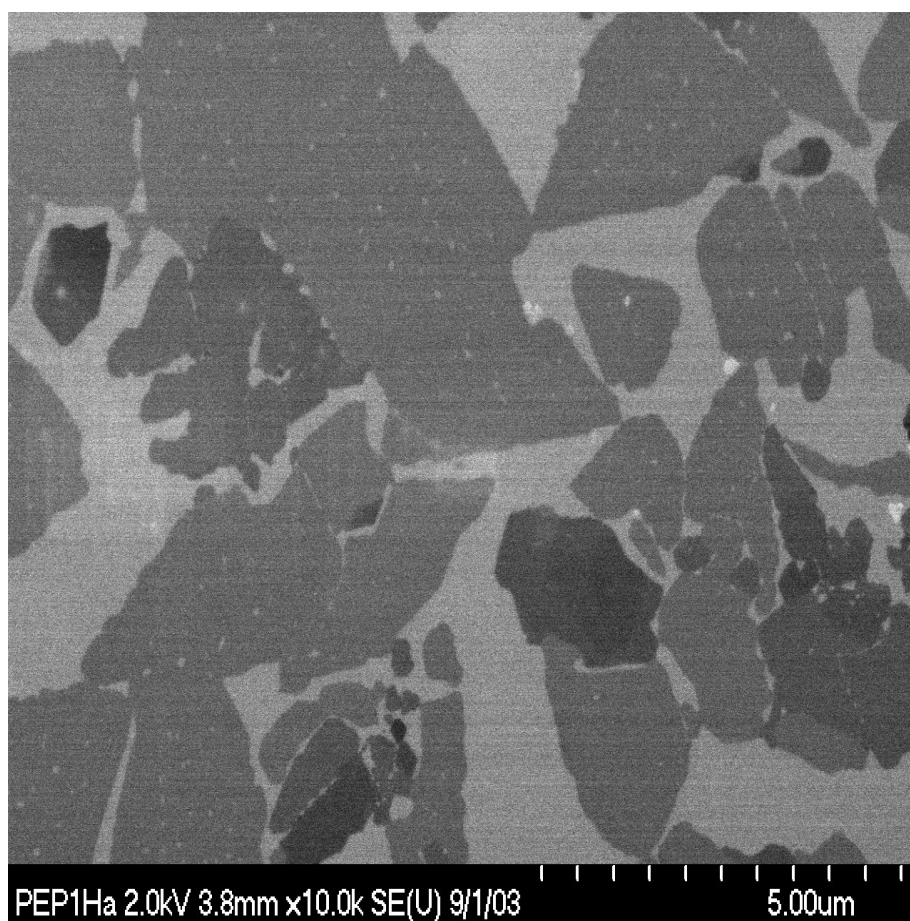
CONTENT

BAM images of the C8G monolayer	S2
SEM images of the C6G monolayer	S3
PM-IRRAS spectra of the C6G monolayer	S4

BAM images of the C8G monolayer at different surface pressure: The letters in the figure correspond to the stages indicated in the π - A isotherm in Figure 4.



SEM images: C6G monolayer at an area of $70 \text{ \AA}^2/\text{molecule}$ transferred onto a silicon substrate.



PM-IRRAS spectra of the C6G monolayer at the air-water interface: The spectrum was recorded at a pressure corresponding to stage g indicated in the π -A isotherm in Figure 4. Note that the normalized spectra ($\Delta S/S$) to the bare water surface at 1720 cm^{-1} for ester C=O and 1670 cm^{-1} for amide C=O are positive and negative respectively.

