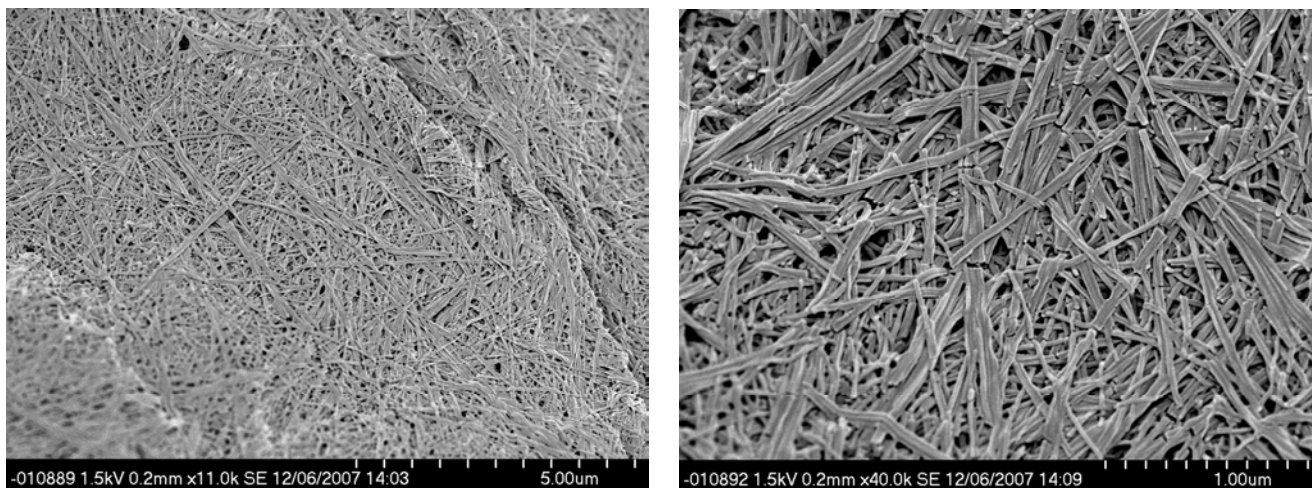
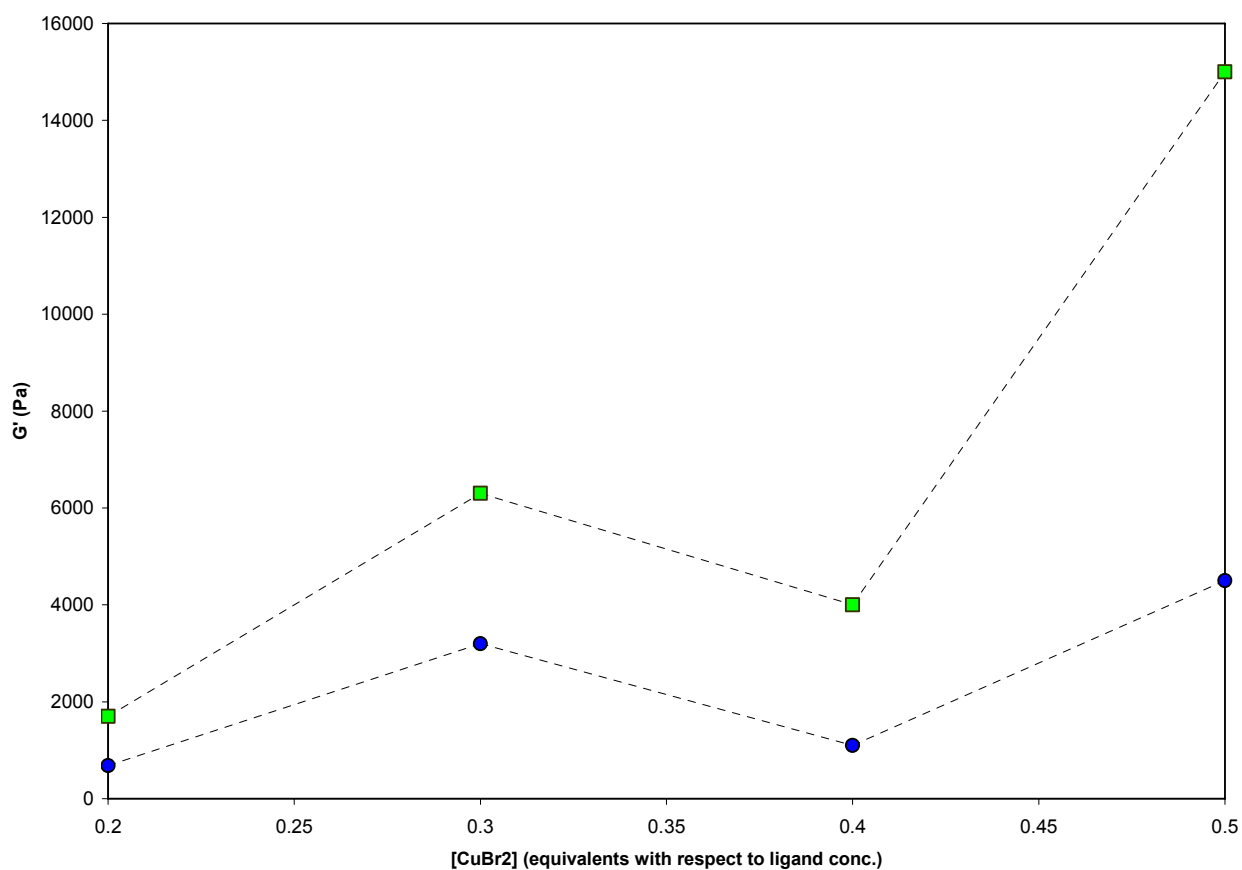


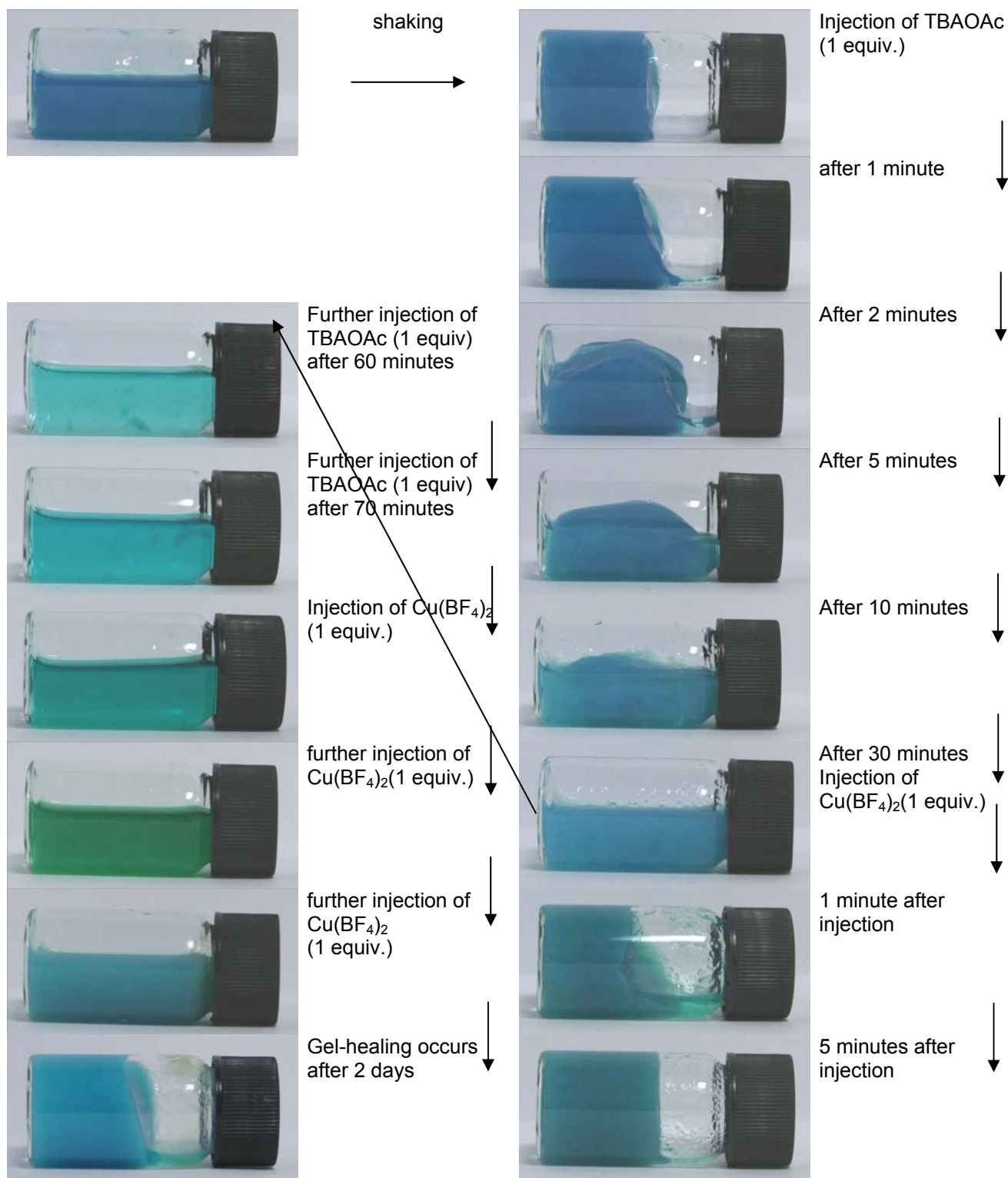
Supporting Information



S1. SEM pictures of a CuBr_2 xerogel with **1** from a 1 wt% gel in MeOH after addition of 0.35 equivalents CuBr_2 .



S2. Gel strengthening in samples of ligand **1** with 0.2, 0.3, 0.4, and 0.5 equiv. of CuBr_2 . G' is measured immediately (blue circles) and 1 week after shaking (green squares).



S3. Full sequence of gel-break up by acetate addition and gel-reformation by subsequent copper salt addition. The gels are made from ligand **1** (1 weight %) after the addition of 0.3 equiv. CuBr_2 in MeOH.