

Strong and Bioactive Gelatin/Graphene Oxide Nanocomposites

Chaoying Wan, Martin Frydrych, Biqiong Chen*

*Trinity Centre for Bioengineering, Department of Mechanical and Manufacturing Engineering,
Trinity College Dublin, College Green, Dublin 2, Ireland.*

* To whom correspondence should be addressed. Tel +353 1 896 1729. Fax +353 1 679 5554.

E-mail address: chenb@tcd.ie

Supporting Information

Transmission electron microscopy (TEM) was carried out on a FEI Titan-Transmission Electron Microscope at 80 kV. The TEM specimen of gelatin/graphene oxide (GO) nanocomposite was sectioned by using the Focused Ion Beam with Cobra ion column system.

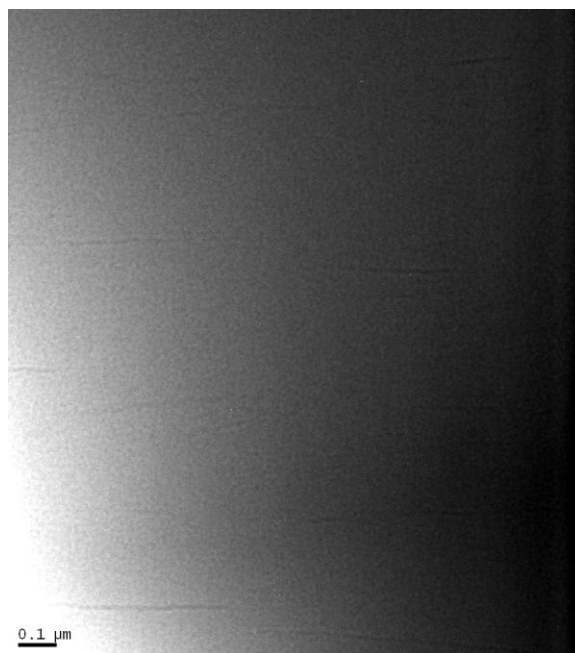


Figure S1. TEM image of gelatin/GO (1 wt%) nanocomposite showing single GO nanosheets.